

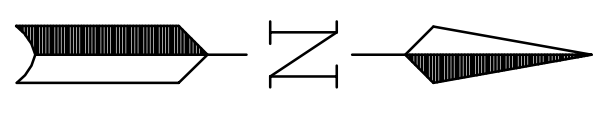
THOMAS R. WILLS & MARILYN GRUBER
D.B. 589 PG. 171 (12.061 AC.)

BENCHMARK - T.B.M.
SPINE IN POWER POLE AT THE
INTERSECTION OF MEEKER AND SOUTHBROOK
ELEV. = 1030.40

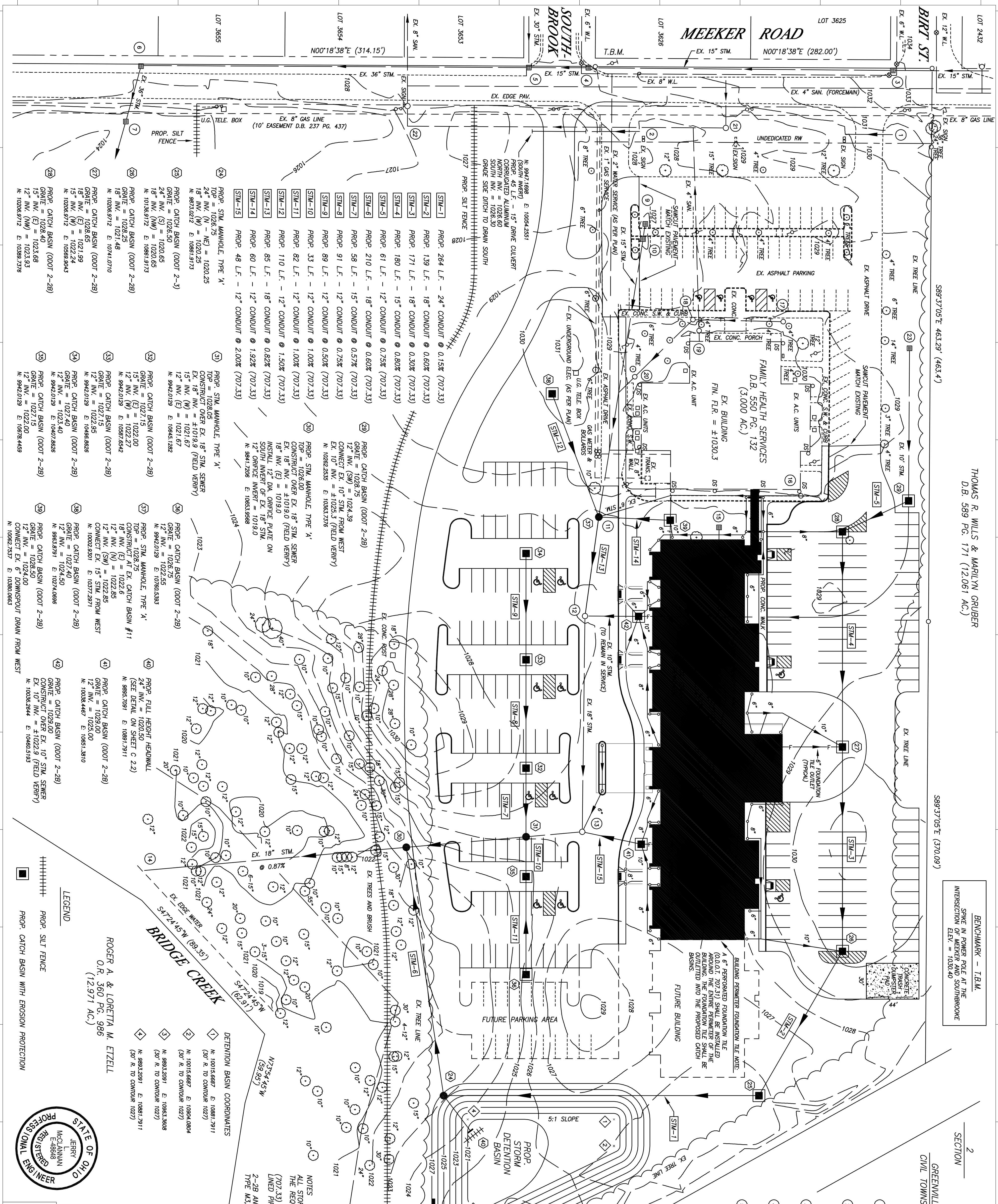
SECTION 2
TOWNSHIP 11 N
RANGE 2 E
GREENVILLE
CHIL TOWNSHIP
DARKE COUNTY

NO.	DATE	REVISION
1	6-19-06	ISSUED FOR BIDDING AND PERMITS

SCALE 1"=40'



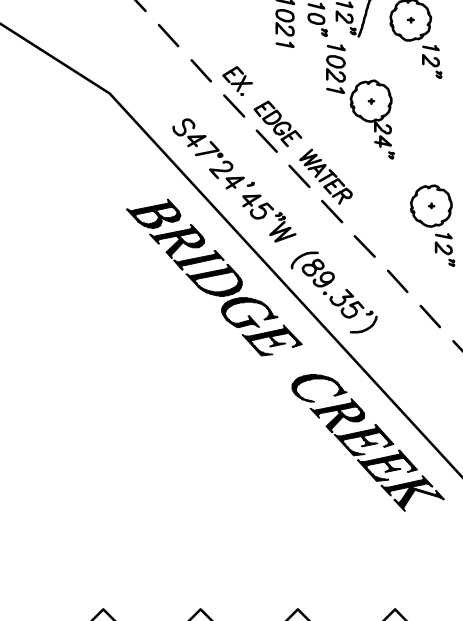
- 1 EX. 12" C.M.P.
EX. 12" NW. = 1029.6 (N)
EX. 12" NW. = 1029.0 (S)
- 2 EX. 12" C.M.P.
EX. 12" NW. = 1026.6 (N)
EX. 12" NW. = 1026.8 (S)
(TO BE REMOVED)
- 3 EX. CATCH BASIN
EX. GATE = 1032.82
EX. 15" NW. = 1025.8
- 4 EX. CATCH BASIN
EX. GATE = 1028.82
EX. 15" NW. = 1025.9
- 5 EX. CATCH BASIN
EX. GATE = 1028.27
EX. 15" NW. = 1022.9 (N)
EX. 30" NW. = 1022.9 (W)
EX. 30" NW. = 1024.1 (S)
- 6 EX. GATE = 1027.01
EX. 36" NW. = 1020.5 (N)
EX. 36" NW. = 1017.7 (E)
- 7 EX. GATE = 1024.05
EX. 36" NW. = 1017.4
- 8 EX. 36" NW. = 1016.9
- 9 EX. CATCH BASIN
EX. GATE = 1028.76
EX. 12" NW. = 1024.3
(TO REMAIN IN SERVICE)
- 10 EX. CATCH BASIN
EX. GATE = 1028.25
EX. 12" NW. = 1024.2 (W)
EX. 15" NW. = 1024.2 (S)
(TO REMAIN IN SERVICE)
- 11 EX. CATCH BASIN
EX. GATE = 1022.81
EX. 6" NW. = 1023.9 (NW)
EX. 15" NW. = 1022.6 (W/E)
TO BE REMOVED, REPLACE
WITH PROP. MANHOLE
- 12 EX. STORM MANHOLE
EX. TOP = 1025.88
EX. 10" NW. = 1022.6 (N)
EX. 15" NW. = 1021.9 (E)
EX. 15" NW. = 1021.9 (S)
(TO REMAIN IN SERVICE)
RECONSTRUCT TOP TO MATCH
PROP. PAVEMENT GRADE
PROP. 18" NW. (W) = 1021.9
- 13 EX. STORM MANHOLE
EX. TOP = 1023.6
EX. 15" NW. (E) = 1020.3
(TO REMAIN IN SERVICE)
RECONSTRUCT TOP TO MATCH
PROP. PAVEMENT GRADE
PROP. 12" NW. (W) = 1020.8



- STM-1 PROP. 264 L.F. - 24" CONDUIT @ 0.15% (707.33)
- STM-2 PROP. 139 L.F. - 18" CONDUIT @ 0.60% (707.33)
- STM-3 PROP. 171 L.F. - 18" CONDUIT @ 0.30% (707.33)
- STM-4 PROP. 180 L.F. - 15" CONDUIT @ 0.80% (707.33)
- STM-5 PROP. 61 L.F. - 12" CONDUIT @ 0.75% (707.33)
- STM-6 PROP. 210 L.F. - 18" CONDUIT @ 0.60% (707.33)
- STM-7 PROP. 58 L.F. - 15" CONDUIT @ 0.57% (707.33)
- STM-8 PROP. 91 L.F. - 12" CONDUIT @ 0.75% (707.33)
- STM-9 PROP. 89 L.F. - 12" CONDUIT @ 0.50% (707.33)
- STM-10 PROP. 33 L.F. - 12" CONDUIT @ 1.00% (707.33)
- STM-11 PROP. 82 L.F. - 12" CONDUIT @ 1.00% (707.33)
- STM-12 PROP. 110 L.F. - 12" CONDUIT @ 1.50% (707.33)
- STM-13 PROP. 85 L.F. - 18" CONDUIT @ 0.82% (707.33)
- STM-14 PROP. 60 L.F. - 12" CONDUIT @ 1.92% (707.33)
- STM-15 PROP. 48 L.F. - 12" CONDUIT @ 2.00% (707.33)

- 32 PROP. STIM. MANHOLE, TYPE 'A'
TOP = 1028.05
EX. 18" NW. = 1027.5
EX. 18" NW. = 1028.9 (FIELD VERIFY)
- 33 PROP. STIM. MANHOLE, TYPE 'A'
TOP = 1027.15
EX. 18" NW. = 1022.00
EX. 18" NW. = 1022.27
EX. 18" NW. = 1022.85
N. 99420129 E. 108976942
- 34 PROP. CATCH BASIN (0007 2-2B)
GATE = 1027.50
EX. 15" NW. = 1024.50
N. 99420129 E. 108976942
- 35 PROP. CATCH BASIN (0007 2-2B)
GATE = 1027.50
EX. 15" NW. = 1024.50
N. 99420129 E. 108976942
- 36 PROP. CATCH BASIN (0007 2-2B)
GATE = 1027.50
EX. 15" NW. = 1024.50
N. 99420129 E. 108976942
- 37 PROP. CATCH BASIN (0007 2-2B)
GATE = 1027.50
EX. 15" NW. = 1024.50
N. 99420129 E. 108976942
- 38 PROP. CATCH BASIN (0007 2-2B)
GATE = 1027.50
EX. 15" NW. = 1024.50
N. 99420129 E. 108976942
- 39 PROP. CATCH BASIN (0007 2-2B)
GATE = 1027.50
EX. 15" NW. = 1024.50
N. 99420129 E. 108976942
- 40 PROP. CATCH BASIN (0007 2-2B)
GATE = 1027.50
EX. 15" NW. = 1024.50
N. 99420129 E. 108976942
- 41 PROP. CATCH BASIN (0007 2-2B)
GATE = 1027.50
EX. 15" NW. = 1024.50
N. 99420129 E. 108976942
- 42 PROP. CATCH BASIN (0007 2-2B)
GATE = 1027.50
EX. 15" NW. = 1024.50
N. 99420129 E. 108976942

NOTES
ALL STORM SEWER DRAINAGE PRODUCTS SHALL SATISFY THE REQUIREMENTS OF O.D.O.T. CMS ITEMS 603 AND 604.
(707.33) - ALL CORRUGATED POLYETHYLENE SMOOTH LINED PIPE SHALL BE BELT AND SPOCKET TYPE WITH GASKETS.
2-2B AND 2-3 CATCH BASIN GATES SHALL BE EAST JORDAN 5110, TYPE M3, OR APPROVED EQUAL.



DEFINITION BASIN COORDINATES
N. 10015.6687 E. 10891.7911
(30' R. TO COMPASS 1027)
N. 10015.6687 E. 10894.0804
(30' R. TO COMPASS 1027)
N. 9943.2091 E. 10863.3908
(30' R. TO COMPASS 1027)
N. 9943.2091 E. 10881.7911
(30' R. TO COMPASS 1027)

ROGER A. & LORETTA M. ETZELL
O.R. 360 PG. 966
(12.971 AC.)

STATE OF OHIO
Professional Engineer
JERRY MCCLAMM
No. 48888

MOYER & ASSOCIATES, INC.
ENGINEERS - LAND SURVEYORS
214 WEST 4th STREET
GREENVILLE, OHIO 45301
PHONE: (937) 546-7511
FAX: (937) 546-7784
WWW.MOYERANDASSOCIATES.COM

E LYNN APP ARCHITECTS INCORPORATED
615 Woodside Drive
Englewood, Ohio 45322
937 836 8898