

FINISH LEGEND

FLOORS

WM WALK-OFF MAT
PATCRAFT ENTRY AESTHETIC
MAKE YOUR WAY 10658
18" X 36" ASHLAR PATTERN

CPT 1 SHAW CONNECTED THREADS
QUILTED TILE
VINTAGE GOLD 16762
9" X 36" CARPET TILE, ASHLAR PATTERN

CPT 2 PATCRAFT ON NEUTRAL GROUND 2
PARTITIONS STREAMLINED
GREIGE 00520
18" X 36" CARPET TILE, BRICK PATTERN

LVT 1A PATCRAFT TREELINE
7" X 48", 20 MIL

LVT 1B PATCRAFT TREELINE
7" X 48", 12 MIL

LVT 2 PATCRAFT EARTHEN
12" X 24", 20 MIL UNLESS NOTED

TILE EXISTING TILE AND BASE TO REMAIN
TILE TO BE THOROUGHLY CLEANED

BASE

RUB RUBBER BASE, 4"

TILE EXISTING TILE BASE TO REMAIN

WALLS

PT 1 PAINT COLOR 1
SEMI GLOSS

PT 2 PAINT COLOR 2

CEILING

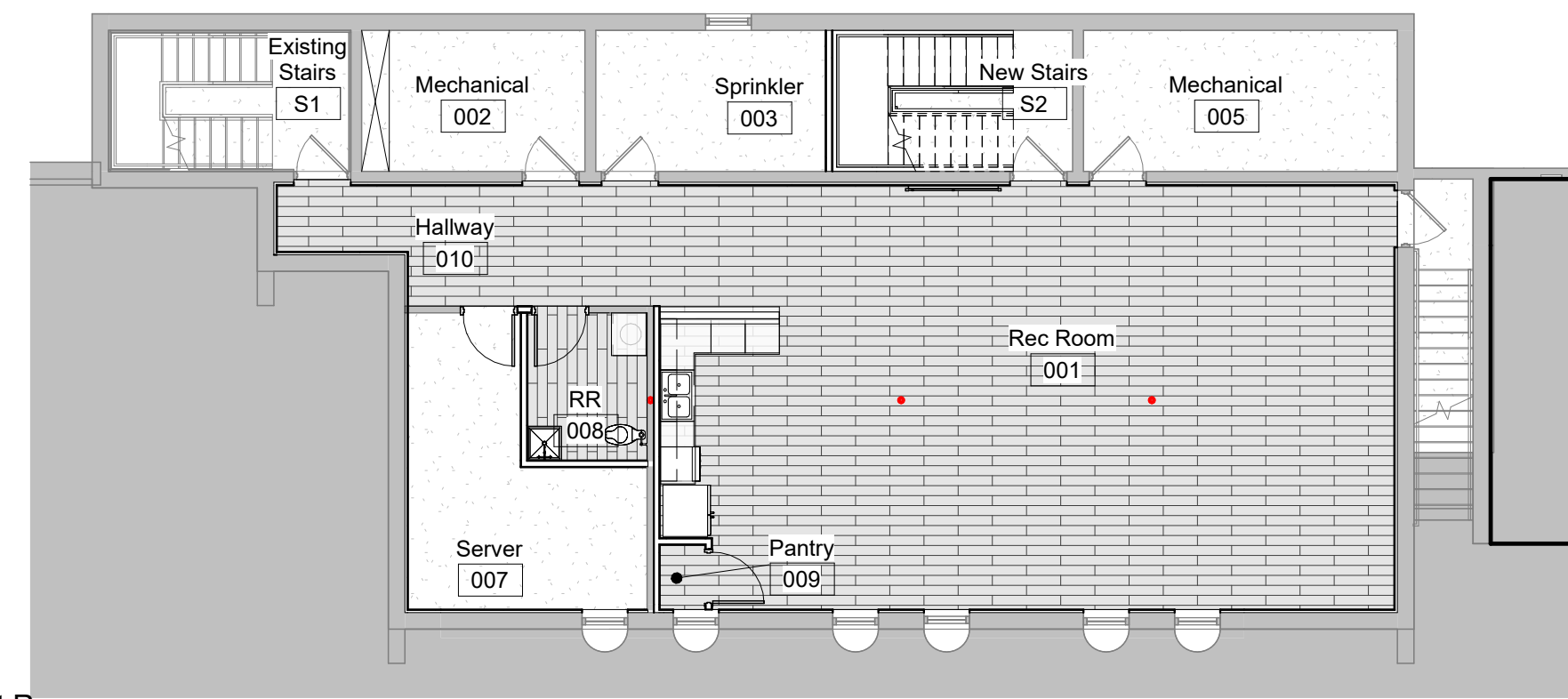
ACT 1 ACOUSTICAL CEILING TILE
2x2 CEILING GRID
ARMSTRONG ULTIMA BEVELED TEGULAR

ACT 2 HUMIDITY RESISTANT ACOUSTICAL
CEILING TILE
2x2 CEILING GRID
ARMSTRONG CERAMAGUARD
UNPERFORATED SQUARE LAY IN

GWB GYPSUM WALL BOARD CEILING

Room Finish Schedule

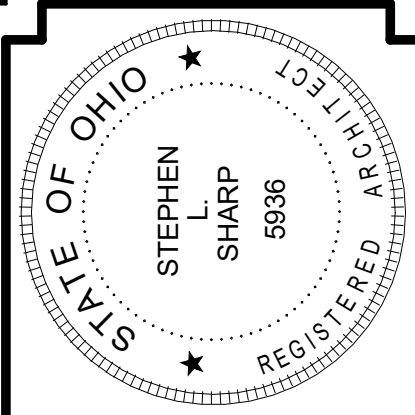
Number	Name	Area	Floor Finish	Base Finish	Wall Finish	Ceiling Finish	Comments
001	Rec Room	1055 SF	LVT 1A	RUB	PT-1	ACT 1	
002	Mechanical	108 SF	SC	-	-	EXP	
003	Sprinkler	111 SF	SC	-	-	EXP	
005	Mechanical	152 SF	SC	-	-	EXP	
007	Server	176 SF	SC	-	-	EXP	
008	RR	60 SF	LVT 1A	RUB	PT-1	ACT 2	
009	Pantry	10 SF	LVT 1A	RUB	PT-1	ACT 1	
010	Hallway	130 SF	LVT 1A	RUB	PT-1	ACT 1	
S1	Existing Stairs	112 SF		RUB	PT-1	ACT 1	
S2	New Stairs	116 SF		RUB	PT-1	ACT 1	
100	Vestibule	203 SF	WM	RUB	PT-2	GWB / ACT	
102	Waiting Room	252 SF	LVT 1A	RUB	PT-1	ACT 1	
103	Restroom	104 SF	TILE	TILE	TILE, PT-1	GWB	
104	Restroom	80 SF	TILE	TILE	TILE, PT-1	GWB	
105	Corridor	132 SF	LVT 1A	RUB	PT-1	GWB	
105B	Stor	16 SF	LVT 1B	RUB	PT-1	ACT 1	
106	Patient Room	106 SF	LVT 1B	RUB	PT-1	ACT 1	
107	Patient Room	98 SF	LVT 1B	RUB	PT-1	ACT 1	
108	Patient Room	106 SF	LVT 1B	RUB	PT-1	ACT 1	
109	Work Room	86 SF	LVT 1A	RUB	PT-1	ACT 1	
110	Corridor	60 SF	LVT 1A	RUB	PT-1	ACT 1	
111	Nurse Station	92 SF	LVT 1A	RUB	PT-1	GWB	
112	Corridor	74 SF	LVT 1A	RUB	PT-1	GWB	
113	Corridor	64 SF	LVT 1A	RUB	PT-1	ACT 1	
113A	Stor	8 SF	LVT 1A	RUB	PT-1	ACT 1	
114	Therapist Office	103 SF	CPT 1	RUB	PT-1	ACT 1	
115	Break Room	115 SF	LVT 1A	RUB	PT-1	ACT 1	
116	Office	98 SF	CPT 1	RUB	PT-1	ACT 1	
117	Office	88 SF	CPT 1	RUB	PT-1	ACT 1	
118	RR	87 SF	LVT 1A	RUB	PT-1	ACT 2	
119	RR	87 SF	LVT 1A	RUB	PT-1	ACT 2	
120	Corridor	241 SF	LVT 1A	RUB	PT-1	ACT 1	
120A	Stor	10 SF	LVT 1B	RUB	PT-1	ACT 1	
121	Patient Room	104 SF	LVT 1B	RUB	PT-1	ACT 1	
122	Patient Room	104 SF	LVT 1B	RUB	PT-1	ACT 1	
123	Patient Room	104 SF	LVT 1B	RUB	PT-1	ACT 1	
124	Patient Room	104 SF	LVT 1B	RUB	PT-1	ACT 1	
125	Patient Room	105 SF	LVT 1B	RUB	PT-1	ACT 1	
126	Corridor	61 SF	LVT 1A	RUB	PT-1	ACT 1	
150	Grp Rm Lobby	156 SF	CPT 1	RUB	PT-1	ACT 1	
151	Group Room	392 SF	CPT 1	RUB	PT-1	ACT 1	
200	Foyer	34 SF	WM	RUB		GWB	
201	Entry	101 SF	LVT 1A	RUB	PT-1	ACT 1	
201A	Jan.	10 SF	LVT 1A	RUB	PT-1	ACT 1	
201B	Stor.	21 SF	LVT 1A	RUB	PT-1	ACT 1	
202	Living Room	314 SF	CPT 1	RUB	PT-1	ACT 1	
203	Dining	215 SF	LVT 2	RUB	PT-1	ACT 1	
204	Kitchen	147 SF	LVT 2	RUB	PT-1	ACT 1	
205	RR	87 SF	LVT 1A	RUB	PT-1	ACT 2	
206	RR	87 SF	LVT 1A	RUB	PT-1	ACT 2	
207	Corridor	88 SF	LVT 1A	RUB	PT-1	ACT 1	
208	Corridor	265 SF	LVT 1A	RUB	PT-1	ACT 1	
208A	Stor.	16 SF	LVT 1A	RUB	PT-1	ACT 1	
208B	Stor.	22 SF	LVT 1A	RUB	PT-1	ACT 1	
209	Foyer	54 SF	WM	RUB		ACT 1	
211	Bedroom	108 SF	CPT 2	RUB	PT-1	ACT 1	
212	Bedroom	112 SF	CPT 2	RUB	PT-1	ACT 1	
213	Bedroom	112 SF	CPT 2	RUB	PT-1	ACT 1	
214	Bedroom	112 SF	CPT 2	RUB	PT-1	ACT 1	
215	Bedroom	112 SF	CPT 2	RUB	PT-1	ACT 1	
216	Bedroom	108 SF	CPT 2	RUB	PT-1	ACT 1	
217	Bedroom	102 SF	CPT 2	RUB	PT-1	ACT 1	
218	Bedroom	103 SF	CPT 2	RUB	PT-1	ACT 1	
220	Laundry	20 SF	LVT 1A	RUB	PT-1	ACT 1	
300	Vestibule	75 SF	WM	RUB	PT-2	GWB	
301	Hallway	68 SF	LVT 1A	RUB	PT-1	ACT 1	
302	Hallway	51 SF	LVT 1A	RUB	PT-1	ACT 1	
303	Bedroom	119 SF	CPT 2	RUB	PT-1	ACT 1	
304	Bedroom	118 SF	CPT 2	RUB	PT-1	ACT 1	
305	Bedroom	118 SF	CPT 2	RUB	PT-1	ACT 1	
306	Bedroom	118 SF	CPT 2	RUB	PT-1	ACT 1	
307	RR	85 SF	LVT 1A	RUB	PT-1	ACT 2	
308	RR	85 SF	LVT 1A	RUB	PT-1	ACT 2	
309	Stor.	27 SF	LVT 1A	RUB	PT-1	ACT 1	
310	Hallway	162 SF	LVT 1A	RUB	PT-1	ACT 1	
310A	Stor.	14 SF	LVT 1A	RUB	PT-1	ACT 1	
311	Hallway	52 SF	LVT 1A	RUB	PT-1	ACT 1	
312	Bedroom	109 SF	CPT 2	RUB	PT-1	ACT 1	
313	Bedroom	109 SF	CPT 2	RUB	PT-1	ACT 1	
314	Bedroom	93 SF	CPT 2	RUB	PT-1	ACT 1	
315	Bedroom	94 SF	CPT 2	RUB	PT-1	ACT 1	
316	Living Room	416 SF	CPT 1	RUB	PT-1	GWB / ACT	
317	Kitchen	159 SF	LVT 2	RUB	PT-1	ACT 1	
318	Dining	131 SF	LVT 2	RUB	PT-1	ACT 1	
319	Tech Station	114 SF	LVT 1A	RUB	PT-1	ACT 1	
320	Laundry	20 SF	LVT 1A	RUB	PT-1	ACT 1	



2 Basement Rooms
1" = 10'-0"



1 Level 1 Rooms
1" = 10'-0"



Stephen L. Sharp, License #5936
Expiration Date: 12/31/2024

REVISIONS			
NO.	DATE	DESCRIPTION	APPROVED BY
1	04/02/2024	SUBMITTED FOR BID/PERMIT	
2	04/22/2024	ADDENDUM 1	

McCall SHARP
ARCHITECTURE
SPRINGFIELD OFFICE
14 EAST MAIN STREET, SUITE 201
SPRINGFIELD, OHIO 45502
P: (937)323-4300
F: (937)322-8142

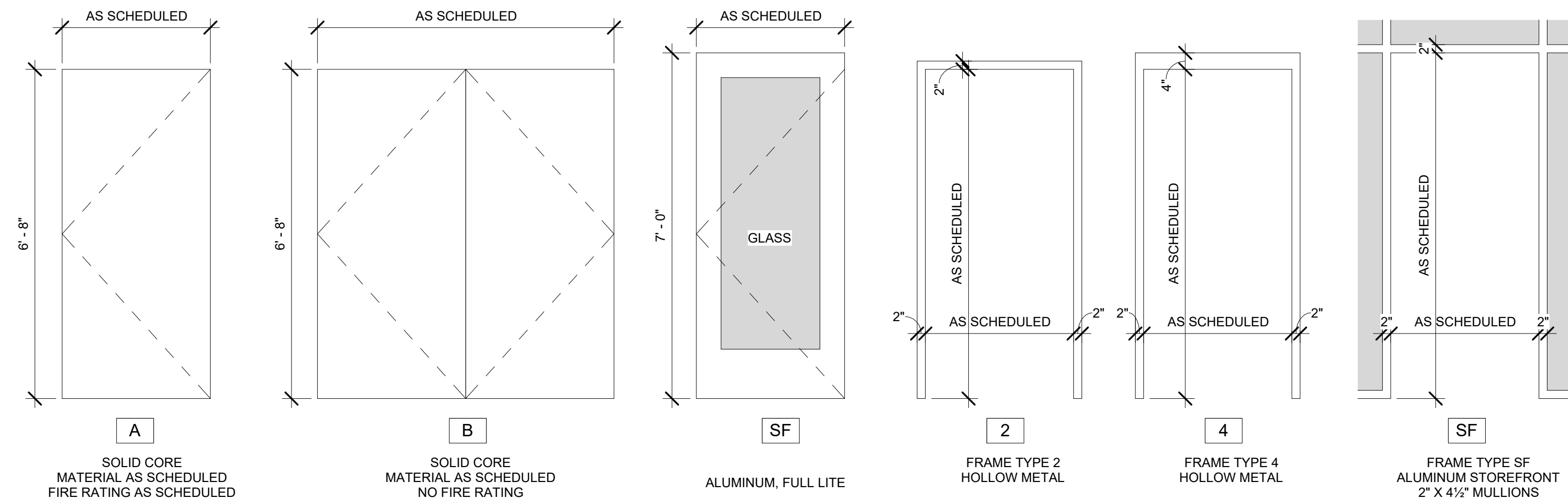
Heart House Renovation
FOR
McKinley Hall
1911 East High Street Springfield Ohio
ROOM FINISH SCHEDULE

JOB NO: 2322

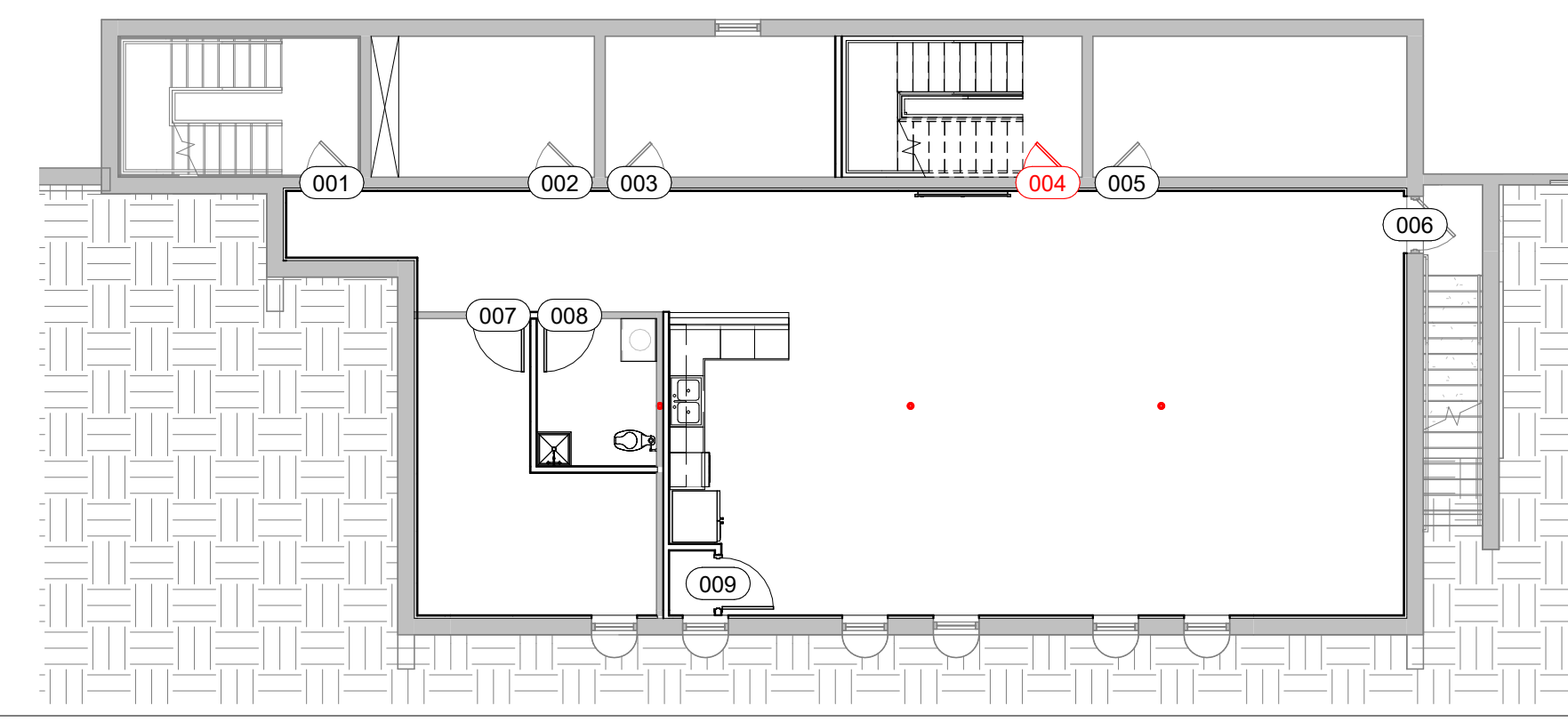
DRAWN BY: CG
CHECKED BY: SLS
Construction Documents

A7.1

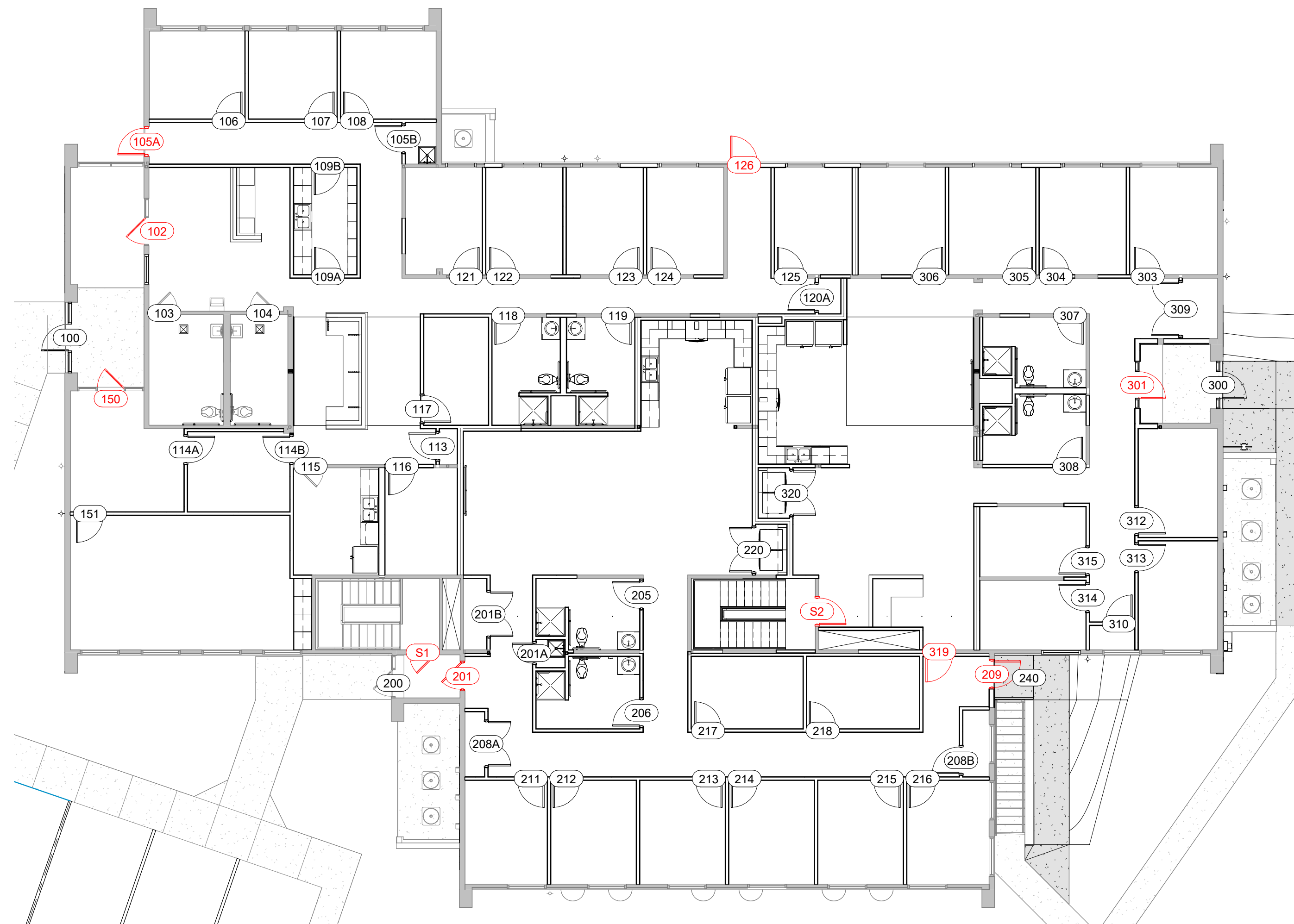
DATE: 2024-04-04
PRINT DATE: 4/22/2024 4:58:23 PM



3 Door, Frame Types
1/2" = 1'-0"



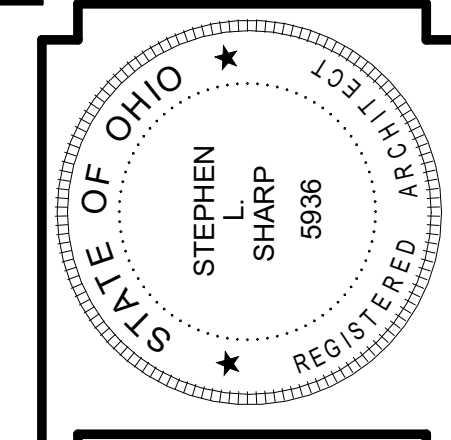
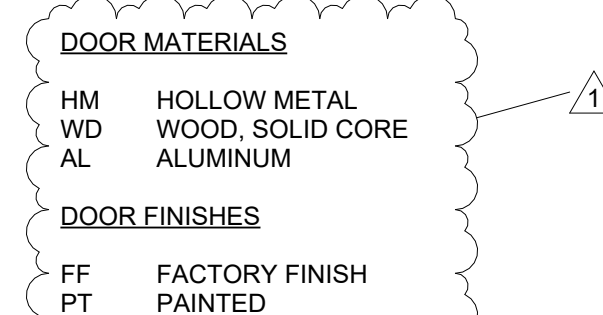
1 Basement Doors
1" = 10'-0"



2 Level 1 Doors
1" = 10'-0"

Door Schedule												
Mark	Type Mark	Material	Finish	Width	Height	Fire Rating	Frame Type	Frame Material	Frame Finish	Phase Created	Comments	
001	A	HM	-	3'-0"	6'-8"		4	HM	-	Existing	1	
002	A	HM	-	3'-0"	6'-8"		4	HM	-	Existing	1	
003	A	HM	-	3'-0"	6'-8"		4	HM	-	Existing	1	
004	A	HM	-	3'-0"	6'-8"		4	HM	-	Existing	1	
005	A	HM	-	3'-0"	6'-8"		4	HM	-	Existing	1	
006	A	HM	-	3'-0"	6'-8"		2	HM	-	Existing	2	
007	A	WD	FF	3'-0"	6'-8"		2	HM	PT	New		
008	A	WD	FF	3'-0"	6'-8"		2	HM	PT	New		
009	A	WD	FF	3'-0"	6'-8"		2	HM	PT	New		
S1	A	WD	-	3'-0"	6'-8"	45 Min	2	HM	-	Existing	1	
S2	A	WD	FF	3'-0"	6'-8"	45 Min	2	HM	PT	New		
100	SF	AL	FF	3'-0"	7'-0"		SF4	AL	FF	New		
102	SF	AL	-	3'-0"	7'-0"		SF2	AL	-	Existing	1	
103	A	WD	-	3'-0"	6'-8"		2	HM	-	Existing	1	
104	A	WD	-	3'-0"	6'-8"		2	HM	-	Existing	1	
105A	A	HM	PT	3'-0"	6'-8"		2	HM	PT	New		
105B	A	WD	FF	3'-0"	6'-8"		2	HM	PT	New		
106	A	WD	FF	3'-0"	6'-8"	45 Min	2	HM	PT	New		
107	A	WD	FF	3'-0"	6'-8"	45 Min	2	HM	PT	New		
108	A	WD	FF	3'-0"	6'-8"	45 Min	2	HM	PT	New		
109A	A	WD	FF	3'-0"	6'-8"		2	HM	PT	New		
109B	A	WD	FF	3'-0"	6'-8"		2	HM	PT	New		
113	A	WD	FF	3'-0"	6'-8"		2	HM	PT	New		
114A	A	WD	FF	3'-0"	6'-8"		2	HM	PT	New		
114B	A	WD	FF	3'-0"	6'-8"		2	HM	PT	New		
115	A	WD	FF	3'-0"	6'-8"		2	HM	PT	Existing	2	
116	A	WD	FF	3'-0"	6'-8"		2	HM	PT	New		
117	A	WD	FF	3'-0"	6'-8"		2	HM	PT	New		
118	A	WD	FF	3'-0"	6'-8"		2	HM	PT	New		
119	A	WD	FF	3'-0"	6'-8"		2	HM	PT	New		
120A	A	WD	FF	3'-0"	6'-8"		2	HM	PT	New		
121	A	WD	FF	3'-0"	6'-8"	45 Min	2	HM	PT	New		
122	A	WD	FF	3'-0"	6'-8"	45 Min	2	HM	PT	New		
123	A	WD	FF	3'-0"	6'-8"	45 Min	2	HM	PT	New		
124	A	WD	FF	3'-0"	6'-8"	45 Min	2	HM	PT	New		
125	A	WD	FF	3'-0"	6'-8"	45 Min	2	HM	PT	New		
126	A	HM	PT	3'-0"	6'-8"		4	HM	PT	New		
150	SF	AL	-	3'-0"	7'-0"		SF1	AL	-	Existing	1	
151	A	WD	FF	3'-0"	6'-8"		2	HM	PT	New		
200	SF	AL	-	3'-0"	7'-0"		SF2	AL	-	Existing	1	
201	A	WD	-	3'-0"	6'-8"		2	HM	-	Existing	1	
201A	A	WD	FF	2'-3"	6'-8"		2	HM	PT	New		
201B	B	WD	FF	5'-0"	6'-8"		2	HM	PT	New		
205	A	WD	FF	3'-0"	6'-8"		2	HM	PT	New		
206	A	WD	FF	3'-0"	6'-8"		2	HM	PT	New		
208A	B	WD	FF	5'-0"	6'-8"		2	HM	PT	New		
208B	A	WD	FF	3'-0"	6'-8"		2	HM	PT	New		
209	A	HM	PT	3'-0"	6'-8"		4	HM	PT	New		
211	A	WD	FF	3'-0"	6'-8"		2	HM	PT	New		
212	A	WD	FF	3'-0"	6'-8"		2	HM	PT	New		
213	A	WD	FF	3'-0"	6'-8"		2	HM	PT	New		
214	A	WD	FF	3'-0"	6'-8"		2	HM	PT	New		
215	A	WD	FF	3'-0"	6'-8"		2	HM	PT	New		
216	A	WD	FF	3'-0"	6'-8"		2	HM	PT	New		
217	A	WD	FF	3'-0"	6'-8"		2	HM	PT	New		
218	A	WD	FF	3'-0"	6'-8"		2	HM	PT	New		
220	B	WD	FF	5'-0"	6'-8"		2	HM	PT	New		
300	SF	AL	FF	3'-0"	7'-0"		SF3	AL	FF	New		
301	SF	AL	FF	3'-0"	7'-0"		SF1	AL	FF	New		
303	A	WD	FF	3'-0"	6'-8"		2	HM	PT	New		
304	A	WD	FF	3'-0"	6'-8"		2	HM	PT	New		
305	A	WD	FF	3'-0"	6'-8"		2	HM	PT	New		
306	A	WD	FF	3'-0"	6'-8"		2	HM	PT	New		
307	A	WD	FF	3'-0"	6'-8"		2	HM	PT	New		
308	A	WD	FF	3'-0"	6'-8"		2	HM	PT	New		
309	B	WD	FF	6'-0"	6'-8"		2	HM	PT	New		
310	A	WD	FF	3'-0"	6'-8"		2	HM	PT	New		
312	A	WD	FF	3'-0"	6'-8"		2	HM	PT	New		
313	A	WD	FF	3'-0"	6'-8"		2	HM	PT	New		
314	A	WD	FF	3'-0"	6'-8"		2	HM	PT	New		
315	A	WD	FF	3'-0"	6'-8"		2	HM	PT	New		
319	A	WD	FF	3'-0"	6'-8"	45 Min	2	HM	PT	New		
320	B	WD	FF	5'-0"	6'-8"		2	HM	PT	New		

- COMMENTS
- REUSE BOTH DOOR FRAME AND DOOR PANEL
 - REUSE DOOR FRAME, PROVIDE NEW DOOR PANEL



Stephen L. Sharp, License #5936
Expiration Date: 12/31/2024

REVISIONS

NO.	DATE	DESCRIPTION
1	04/02/2024	SUBMITTED FOR BID PERMIT
2	04/22/2024	ADDENDUM 1

McCall SHARP
ARCHITECTURE

SPRINGFIELD OFFICE
14 EAST MAIN STREET, SUITE 201
SPRINGFIELD, OHIO 45502

P: (937)323-4300
F: (937)322-8142

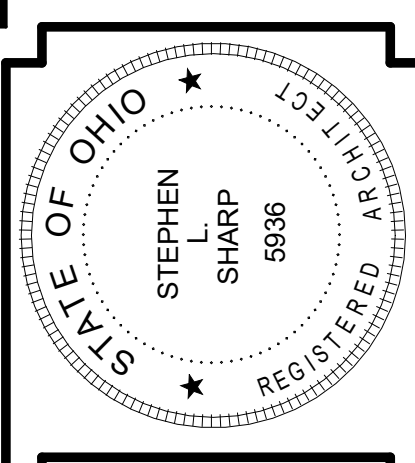
Heart House Renovation
FOR
McKinley Hall
1911 East High Street Springfield Ohio

JOB NO: 2322

DRAWN BY: CG
CHECKED BY: SLS
Construction Documents

A7.2

DATE 2024-04-04



Stephen L. Sharp, License #5936
Expiration Date: 12/31/2024

REVISIONS	
NO.	DATE
1	04/22/2024
2	04/22/2024

McCall SHARP
ARCHITECTURE
SPRINGFIELD OFFICE
14 EAST MAIN STREET, SUITE 201
SPRINGFIELD, OHIO 45502
P: (937)323-4300
F: (937)322-8142

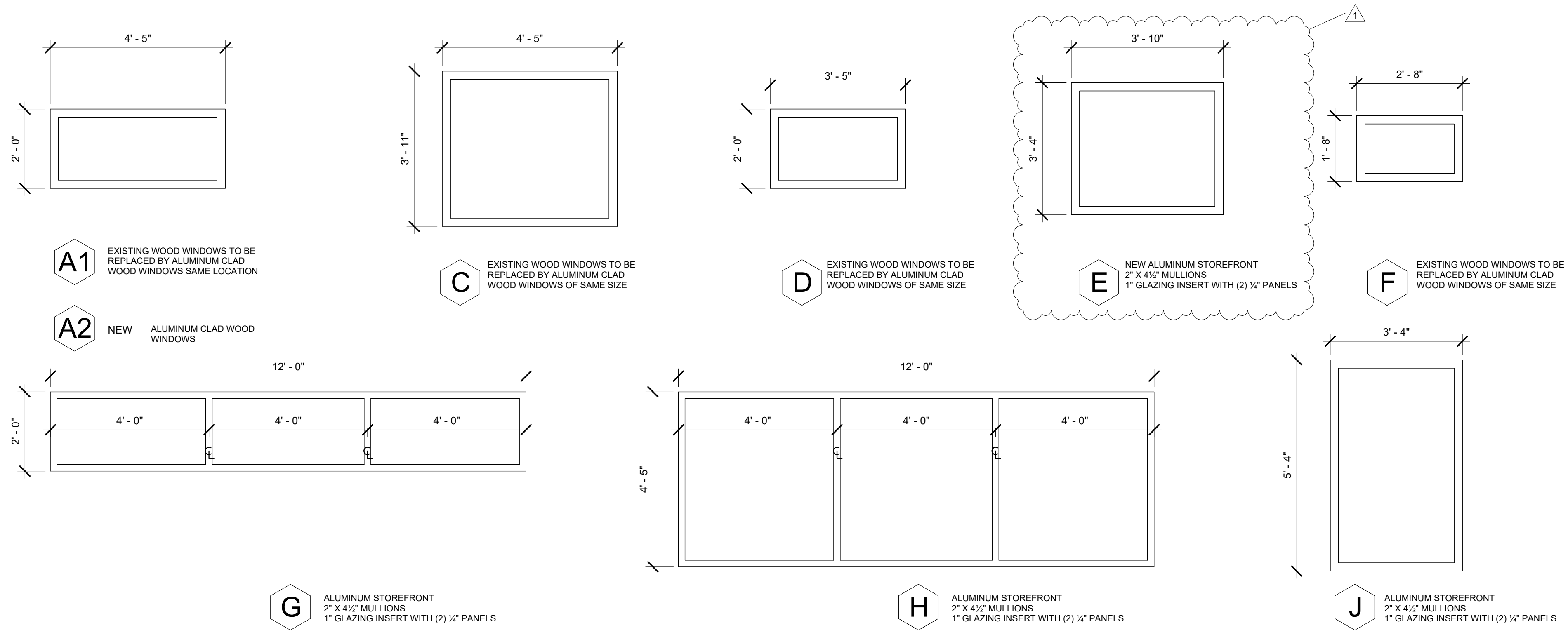
Heart House Renovation
FOR
McKinley Hall
1911 East High Street Springfield Ohio
WINDOW SCHEDULE

JOB NO: 2322

DRAWN BY: CG
CHECKED BY: SLS
Construction Documents

A7.3

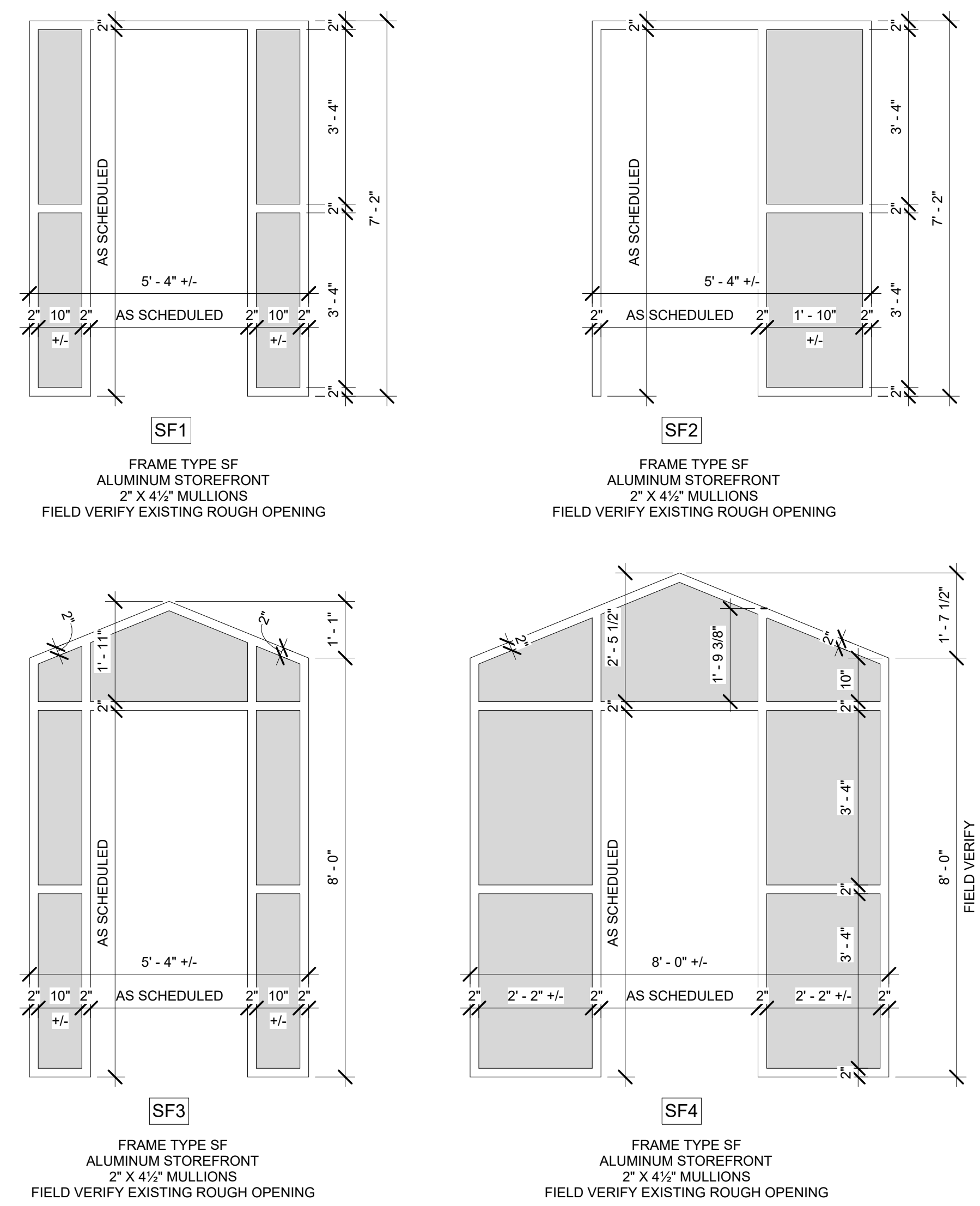
DATE: 2024-04-04



Window Legend

SCALE: 1/2" = 1'-0"

DIMENSIONS ABOVE ARE APPROXIMATE AND MAY VARY SLIGHTLY BETWEEN WINDOWS OF THE SAME TYPE DESIGNATION CONTRACTOR TO VERIFY SIZE OF EXISTING WINDOW OPENINGS PRIOR TO ORDERING NEW WINDOWS

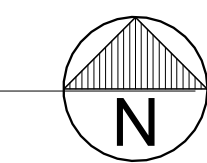
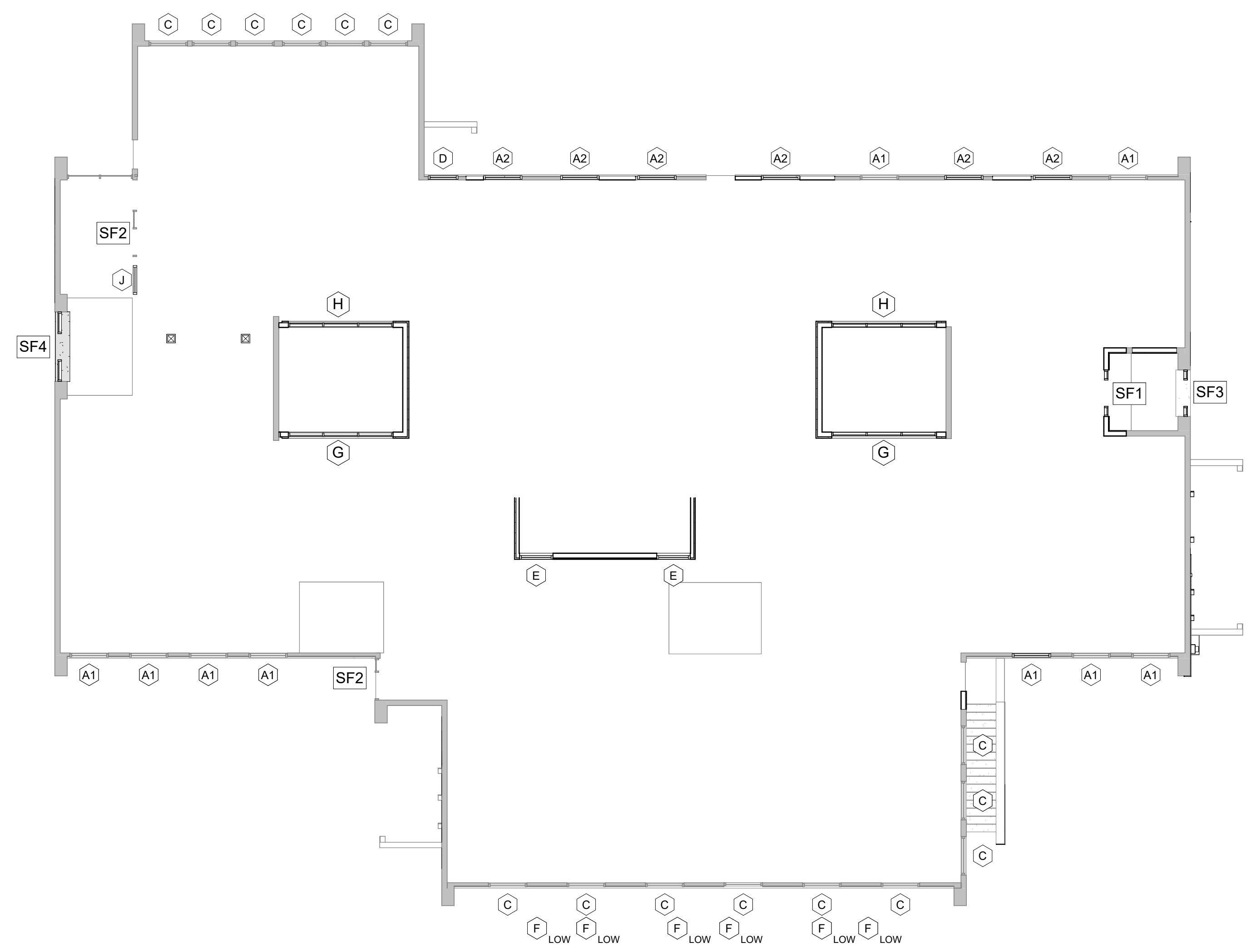


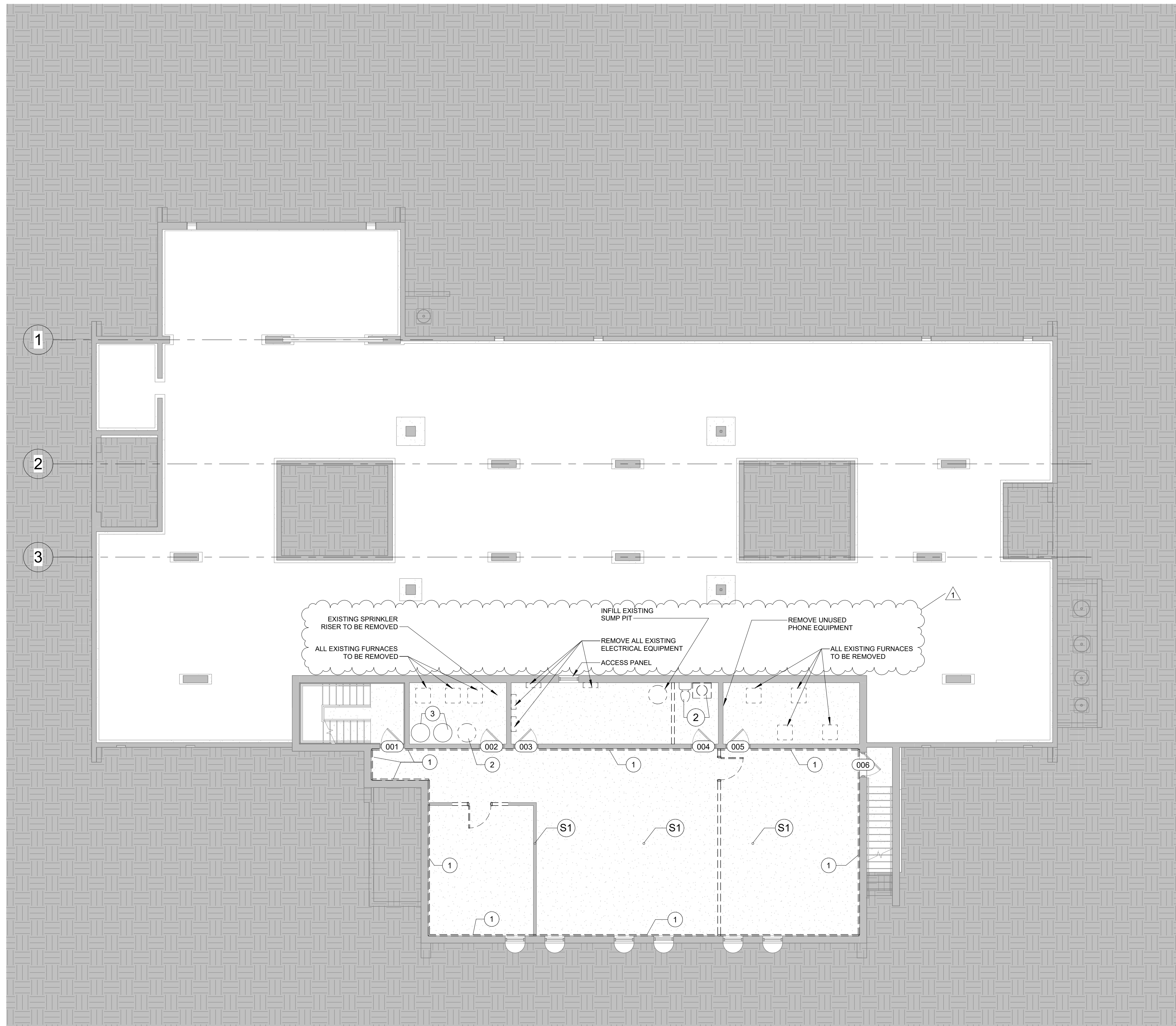
2 Storefront Legend

SCALE: 1/2" = 1'-0"

1 Level 1 Windows

SCALE: 1" = 10'-0"





DEMO LEGEND

- EXISTING TO REMAIN
- EXISTING TO BE DEMOLISHED
- NEW
- EXISTING DOOR TO REMAIN
- EXISTING DOOR TO BE DEMOLISHED

GENERAL NOTES

REMOVE ALL EXISTING FLOOR FINISHES UNLESS NOTED OTHERWISE

REMOVE ALL EXISTING SUSPENDED CEILINGS UNLESS NOTED OTHERWISE

REMOVE DRYWALL BULKHEADS. GWB SHALL REMAIN ON UNDERSIDE OF TRUSSES.

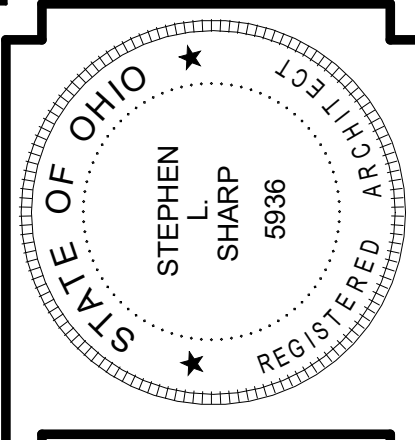
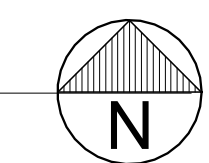
EXISTING ELECTRICAL WIRING AND OUTLETS TO BE REMOVED

WHERE PLUMBING FIXTURES ARE REMOVED, ALSO REMOVE ACCOMPANYING SUPPLY AND DRAIN LINES.

CODED NOTES

- S1** STRUCTURAL STEEL COLUMN TO REMAIN
- S2** STRUCTURAL WOOD STUDS SUPPORTING BEAM TO REMAIN
- 1** REMOVE EXISTING DRYWALL, WOOD FURRING TO REMAIN
- 2** REMOVE EXISTING PLUMBING FIXTURE AND PLUMBING LINES
- 3** PLUMBING FIXTURE TO REMAIN

1 Basement Demolition Plan
SCALE: 1/8" = 1'-0"



Stephen L. Sharp, License #5936
Expiration Date: 12/31/2024

REVISIONS

NO.	DATE	DESCRIPTION
	04/02/2024	SUBMITTED FOR BID/PERMIT

McCall SHARP
ARCHITECTURE

SPRINGFIELD OFFICE
14 EAST MAIN STREET, SUITE 201
SPRINGFIELD, OHIO 45502

P: (937)323-4300
F: (937)322-8142

Heart House Renovation
FOR
McKinley Hall
1911 East High Street Springfield Ohio

BASEMENT DEMOLITION PLAN

JOB NO: 2322

DRAWN BY: CG
CHECKED BY: SLS
Construction Documents

D1.2

DATE: 2024-04-04