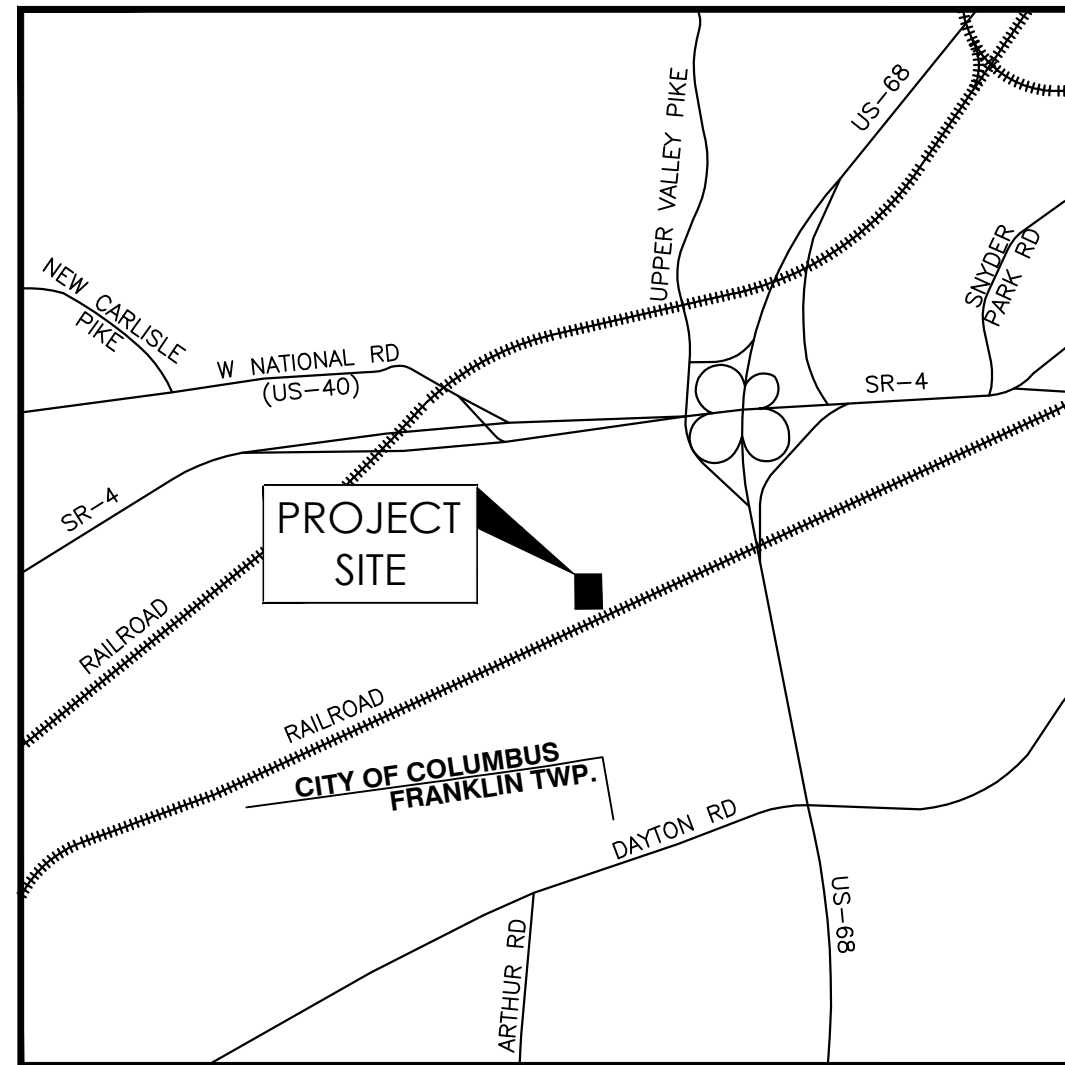


**NOT FOR
CONSTRUCTION**

CITY OF SPRINGFIELD, OHIO
OHIO MASONIC HOME
2655 W NATIONAL RD
PRELIMINARY CONSTRUCTION PLANS



VICINITY MAP
NOT TO SCALE



LOCATION MAP
1" = 200'

INDEX OF SHEETS

TITLE SHEET	1.
SITE PLAN - POLE BARN	2.
SITE PLAN - CARPORT, ELEVATOR & PARKING	3.

OWNER/DEVELOPER: OHIO MASONIC HOME
2655 WEST NATIONAL ROAD
SPRINGFIELD, OH 45504
937-319-3473 PH
JASON ABEREGG
JABEREGG@OMCOH.ORG

ARCHITECT: APP ARCHITECTURE
615 WOODSIDE DRIVE
ENGLEWOOD, OH 45322
937-836-8898 EXT. 103 PH
TODD GINDELBERGER
TODD.GINDELBERGER@APP-ARCH.COM

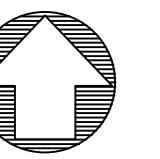
ENGINEER: SANDS DECKER
1495 OLD HENDERSON ROAD
COLUMBUS, OH 43220
614-459-6992
ENGINEER
EMAIL

8/2/2024

Registered Engineer Date

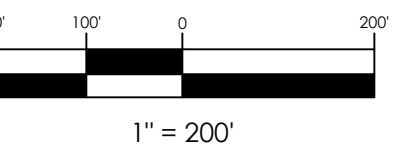


Know what's below.
Call before you dig.



NORTH

GRAPHIC SCALE



POLE BARN SUMMARY OF ESTIMATED QUANTITIES

ITEM	TOTAL	UNIT	DESCRIPTION
202	14497	SF	GRAVEL REMOVED
608	901	SF	CONCRETE WALK
803	1	EACH	8" x 6" SANITARY SERVICE CONNECTION
804	3	EACH	CATCH BASIN, No. 1
841	1	EACH	1" PROPERTY SERVICE
SPECIAL	8066	SF	ASPHALT DRIVE
SPECIAL	8506	SF	EXISTING GRAVEL REGRADED
SPECIAL	1308	LF	FENCE REMOVED
SPECIAL	342	LF	12" STORM SEWER PIPE
SPECIAL	433	LF	6" SANITARY SEWER PIPE
SPECIAL	2	EACH	SANITARY SEWER CLEANOUTS
SPECIAL	50	LF	1" WATER SERVICE PIPE
SPECIAL	164	LF	PARKING LOT STRIPING

ENGINEER'S ESTIMATE OF QUANTITIES: THE ENGINEER'S ESTIMATE OF QUANTITIES AS SHOWN ON THE CONSTRUCTION DRAWINGS AND CONTRACT DOCUMENTS ARE APPROXIMATE ONLY. THE ESTIMATED QUANTITIES ARE BELIEVED TO BE COMPLETE AND ACCURATE, HOWEVER, THE CONTRACTOR IS RESPONSIBLE TO COMPLETE THE PROJECT AS TO THE INTENT SHOWN ON THE DRAWINGS AND DESCRIBED IN THE SPECIFICATIONS AND CONTRACT DOCUMENTS. ADDITIONAL COMPENSATION WILL NOT BE MADE TO THE CONTRACTOR FOR HIS FAILURE TO INCLUDE THE TOTAL COST OF ALL LABOR, EQUIPMENT, AND MATERIALS IN THE TOTAL BID PRICE.

ITEM NUMBERS REFER TO THE 2021 CITY OF SPRINGFIELD CONSTRUCTION AND MATERIAL SPECIFICATIONS.

CARPORT, ELEVATOR & PARKING SUMMARY OF ESTIMATED QUANTITIES

ITEM	TOTAL	UNIT	DESCRIPTION
202	89	LF	8" DUCTILE IRON WATERLINE REMOVED
202	150	LF	4" STORM PIPE REMOVED
202	2211	SF	ASPHALT PARKING REMOVED
608	2914	SF	CONCRETE WALK
608	2	EACH	CURB RAMP
608	42	LF	CONCRETE STEPS
609	571	LF	6" CURB
SPECIAL	17947	SF	ASPHALT DRIVE/PARKING LOT
SPECIAL	8506	SF	ASPHALT DRIVE/PARKING LOT RECONSTRUCTED TO GRADE
SPECIAL	260	LF	12" STORM SEWER PIPE
SPECIAL	900	LF	PARKING LOT STRIPING
SPECIAL	4	EACH	REMOVE BOLLARD
SPECIAL	16	EACH	INSTALL BOLLARD
SPECIAL	4	EACH	LIGHT POLE REMOVED/RELOCATED
SPECIAL	51	LF	6" SANITARY SEWER SERVICE RELOCATED
SPECIAL	1	EACH	SANITARY SEWER CLEANOUT RELOCATED
SPECIAL	1	EACH	GAS SERVICE RELOCATED

ENGINEER'S ESTIMATE OF QUANTITIES: THE ENGINEER'S ESTIMATE OF QUANTITIES AS SHOWN ON THE CONSTRUCTION DRAWINGS AND CONTRACT DOCUMENTS ARE APPROXIMATE ONLY. THE ESTIMATED QUANTITIES ARE BELIEVED TO BE COMPLETE AND ACCURATE, HOWEVER, THE CONTRACTOR IS RESPONSIBLE TO COMPLETE THE PROJECT AS TO THE INTENT SHOWN ON THE DRAWINGS AND DESCRIBED IN THE SPECIFICATIONS AND CONTRACT DOCUMENTS. ADDITIONAL COMPENSATION WILL NOT BE MADE TO THE CONTRACTOR FOR HIS FAILURE TO INCLUDE THE TOTAL COST OF ALL LABOR, EQUIPMENT, AND MATERIALS IN THE TOTAL BID PRICE.

ITEM NUMBERS REFER TO THE 2021 CITY OF SPRINGFIELD CONSTRUCTION AND MATERIAL SPECIFICATIONS.

**Ohio Masonic
Home**
Pole Barn, Carport,
Elevator & Parking
Addition

8/2/2024

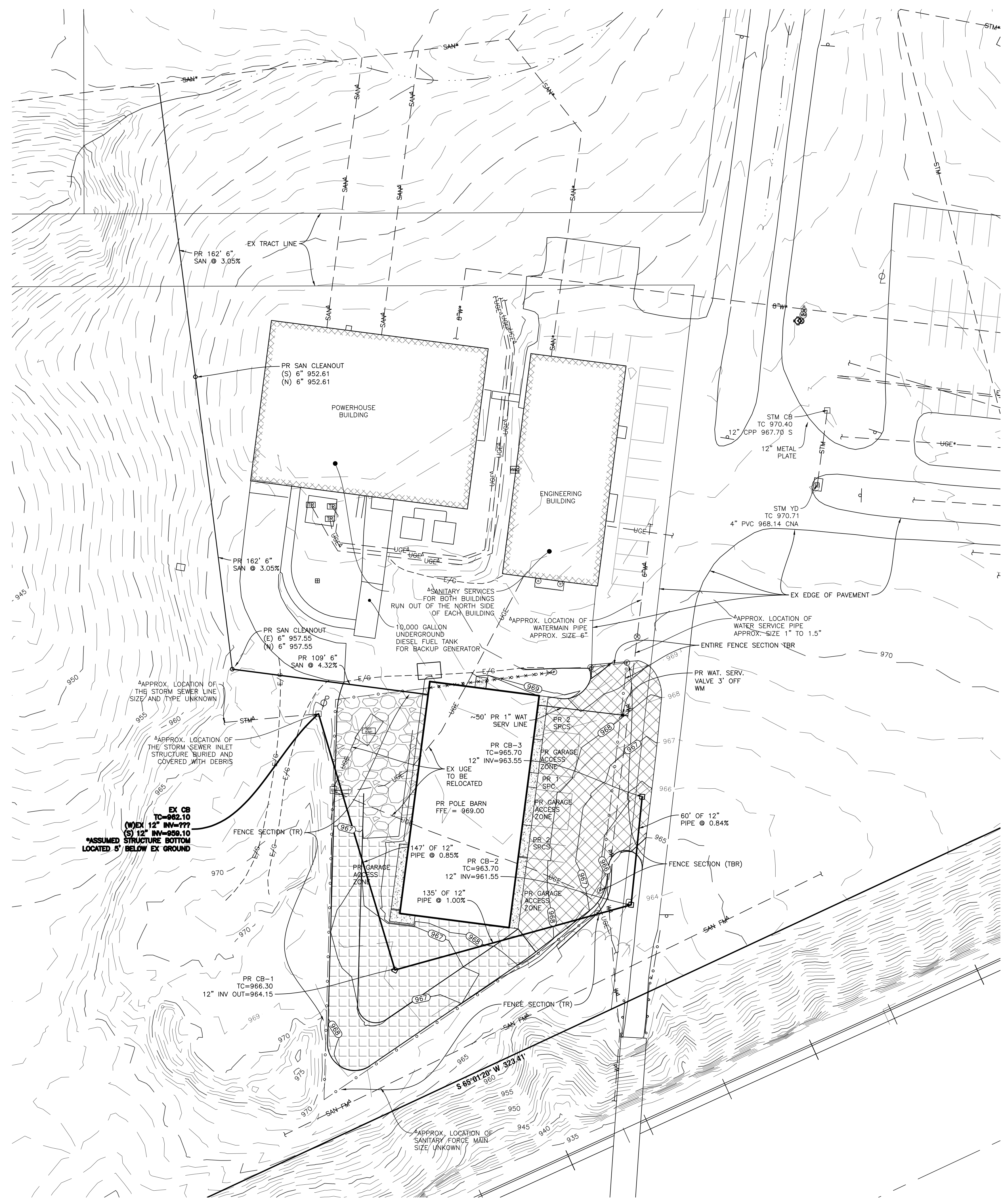
PRELIMINARY

TITLE SHEET

1 OF 3

SD PROJECT NO. 4863

NOT FOR CONSTRUCTION



LEGEND

— P —	PROPERTY LINE	○	MANHOLE	□	HVAC UNIT
- - -	LOT LINE (GIS)	□	DOWNSPOUT	□	POWER POLE
— STM —	STORM LINE	□	CATCH BASIN	—	GUY WIRE
— SAN —	SANITARY SEWER	□	CURB & GUTTER INLET	□	ELECTRIC METER
— G —	GAS LINE	○	FIRE HYDRANT	○	ELECTRIC BOX
— OHE —	OVERHEAD ELECTRIC LINE	○	WATER VALVE	○	TRANSFORMER
— UGE —	UNDERGROUND ELECTRIC LINE	○	WATER METER	○	IRON PIN FOUND
— UGC —	UNDERGROUND COMMUNICATION LINE	○	FIRE PROTECTION CONNECTION	○	BUILDING
— E/G —	EDGE OF GRAVEL	○	GAS VALVE	○	
— ○ —	CHAIN LINK FENCE	○	GAS METER	○	

— 888 —	PROPOSED CONTOUR & LABEL	□	EX GRAVEL PAVEMENT (TO REMAIN)
- - - 888 - - -	EXISTING CONTOUR & LABEL	□	PR ASPHALT PAVEMENT
□	PR CONCRETE PAD/SIDEWALK	□	
□	EX GRAVEL PAVEMENT (TO BE REGRADED)	□	

ABBREVIATIONS

VCP	VITREOUS CLAY PIPE
RCP	REINFORCED CONCRETE PIPE
PVC	POLYVINYL CHLORIDE PIPE
SAN	SANITARY
STM	STORM
CGI	CURB & GUTTER INLET
MH	MANHOLE
GMH	GRATED MANHOLE
CB	CATCH BASIN
CO	CLEANOUT
TC	TOP OF CASTING
FL	FLOW LINE
FOD	FULL OF DEBRIS
CONC	CONCRETE
TBM	TEMPORARY BENCHMARK
IPF	IRON PIN FOUND
EX	EXISTING
PR	PROPOSED
W	WATER
ELEC	ELECTRIC
TBR	TO BE REMOVED
TBRL	TO BE RELOCATED
UNK	UNKNOWN
ESMT	EASEMENT
WMF	WALL MOUNTED FLOODLIGHT
*	DRAWN AS PER PLANS

811
Know what's below.
Call before you dig.

NORTH

GRAPHIC SCALE
30' 15' 0' 30'
1" = 30'

Ohio Masonic Home Pole Barn Addition

8/2/2024

PRELIMINARY SITE PLAN

2 OF 3

SD PROJECT NO. 4863

These drawings are instruments of professional service by Sands Decker CPS, LLC for the designated project. Sands Decker CPS, LLC assumes no liability for unauthorized use of these drawings, specifications, and documents.

NOT FOR CONSTRUCTION



ABBREVIATIONS

- VCP VITREOUS CLAY PIPE
- RCP REINFORCED CONCRETE PIPE
- PVC POLYVINYL CHLORIDE PIPE
- SAN SANITARY
- STM STORM
- CGI CURB & GUTTER INLET
- MH MANHOLE
- GMH GRATED MANHOLE
- CB CATCH BASIN
- CO CLEANOUT
- TC TOP OF CASTING
- FL FLOW LINE
- FOD FULL OF DEBRIS
- CNC CONCRETE
- TBM TEMPORARY BENCHMARK
- IPF IRON PIN FOUND
- EX EXISTING
- PR PROPOSED
- W WATER
- ELEC ELECTRIC
- TBR TO BE REMOVED
- TBR/L TO BE RELOCATED
- UNK UNKNOWN
- ESMT EASEMENT
- WMF WALL MOUNTED FLOODLIGHT
- * DRAWN AS PER PLANS

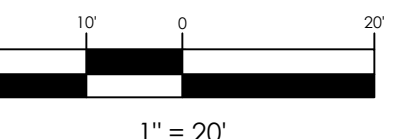


Know what's below.
Call before you dig.



NORTH

GRAPHIC SCALE



- PR CONCRETE PAD/ SIDEWALK
- EX PAVEMENT (TO BE REGRADED)
- PR ASPHALT PAVEMENT

- LEGEND**
- PROPERTY LINE
 - LOT LINE (GIS)
 - STORM LINE
 - SANITARY SEWER
 - GAS LINE
 - OVERHEAD ELECTRIC LINE
 - UNDERGROUND ELECTRIC LINE
 - UNDERGROUND COMMUNICATION LINE
 - EDGE OF GRAVEL
 - CHAIN LINK FENCE
 - MANHOLE
 - DOWNSPOUT
 - CATCH BASIN
 - CURB & GUTTER INLET
 - FIRE HYDRANT
 - WATER VALVE
 - WATER METER
 - FIRE PROTECTION CONNECTION
 - GAS VALVE
 - GAS METER
 - HVAC UNIT
 - POWER POLE
 - GUY WIRE
 - ELECTRIC METER
 - ELECTRIC BOX
 - TRANSFORMER
 - IRON PIN FOUND
 - BUILDING

- PROPOSED CONTOUR & LABEL
- EXISTING CONTOUR & LABEL

**Ohio Masonic Home
Carport, Elevator &
Parking Addition**

8/2/2024

PRELIMINARY
SITE PLAN

3 OF 3

SD PROJECT NO. 4863