

Addendum

DATE: 12/12/2025

615 Woodside Drive, Englewood, Ohio 45322

T 937.836.8898 F 937.832.3696

www.app-arch.com

PROJECT: Office Renovation and Addition for
City of Huber Heights Tax, Finance & Water Departments

PROJECT ADDRESS: 6131 Taylorsville Road, Huber Heights, OH 45424

ADDENDUM NO. 3

RECEIPT OF THIS ADDENDUM MUST BE NOTED ON THE FORM OF PROPOSAL

TO ALL BIDDERS:

This addendum supplements and amends the original Plans and Specifications and shall be taken into account in preparing proposals and shall become part of the Contract Documents.

ARCHITECTURAL DRAWINGS:

ITEM A1 DRAWING, A0.2

1. Room finish schedule – Lobby 102 – Delete LVT-1 flooring. Room shall have MAT-1 only.
2. Add general finish note: '1. Elevator interior cab finishes are existing to remain.'

MECHANICAL DRAWINGS:

ITEM M1 DRAWING, H0.4

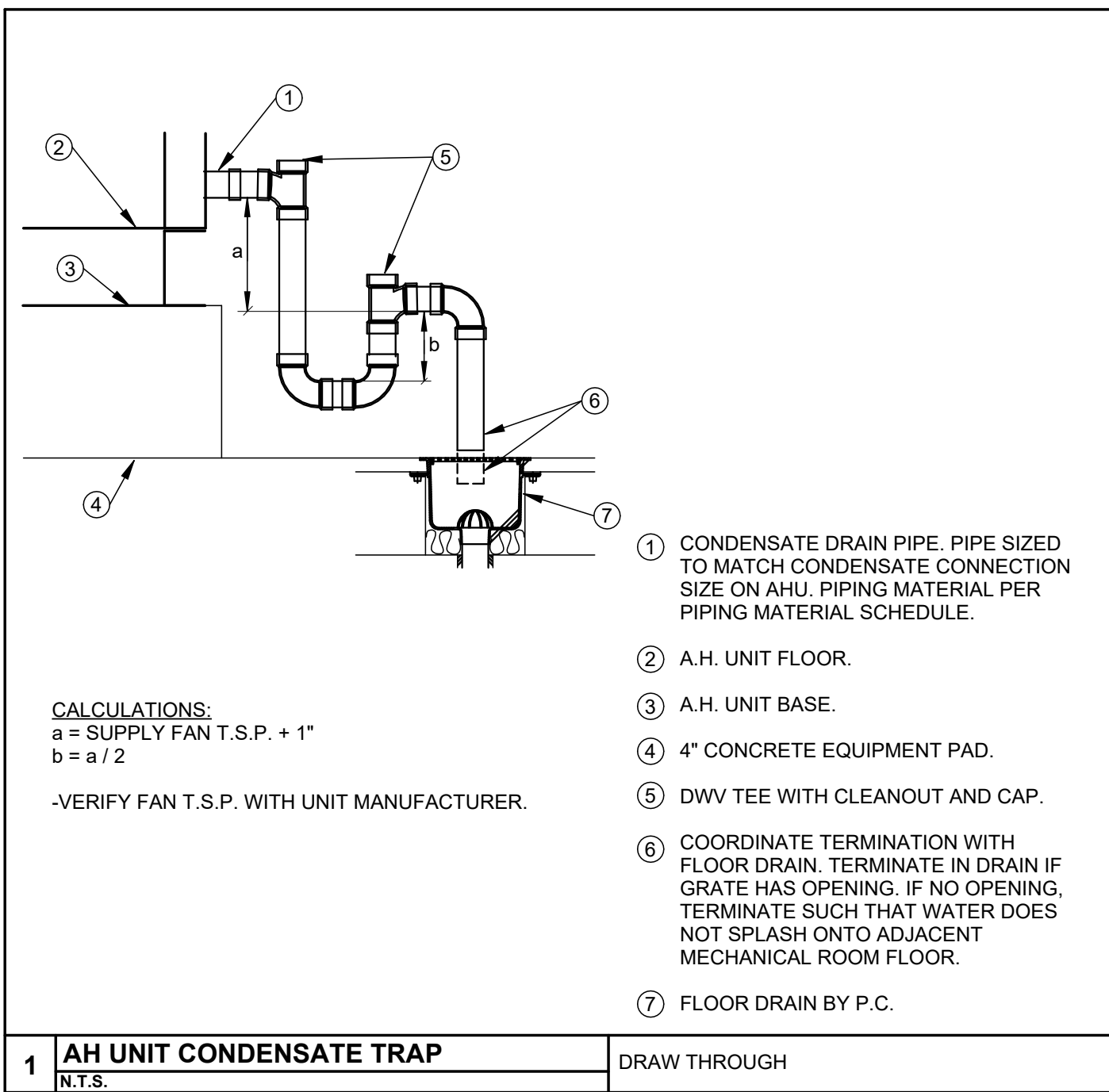
1. Deleted Note 1 about pre-purchase of air handling unit and condensing unit from the General AHU Notes. Items are to be included in bid.

END OF ADDENDUM NO. 3

ATTACHMENTS: Specifications
None

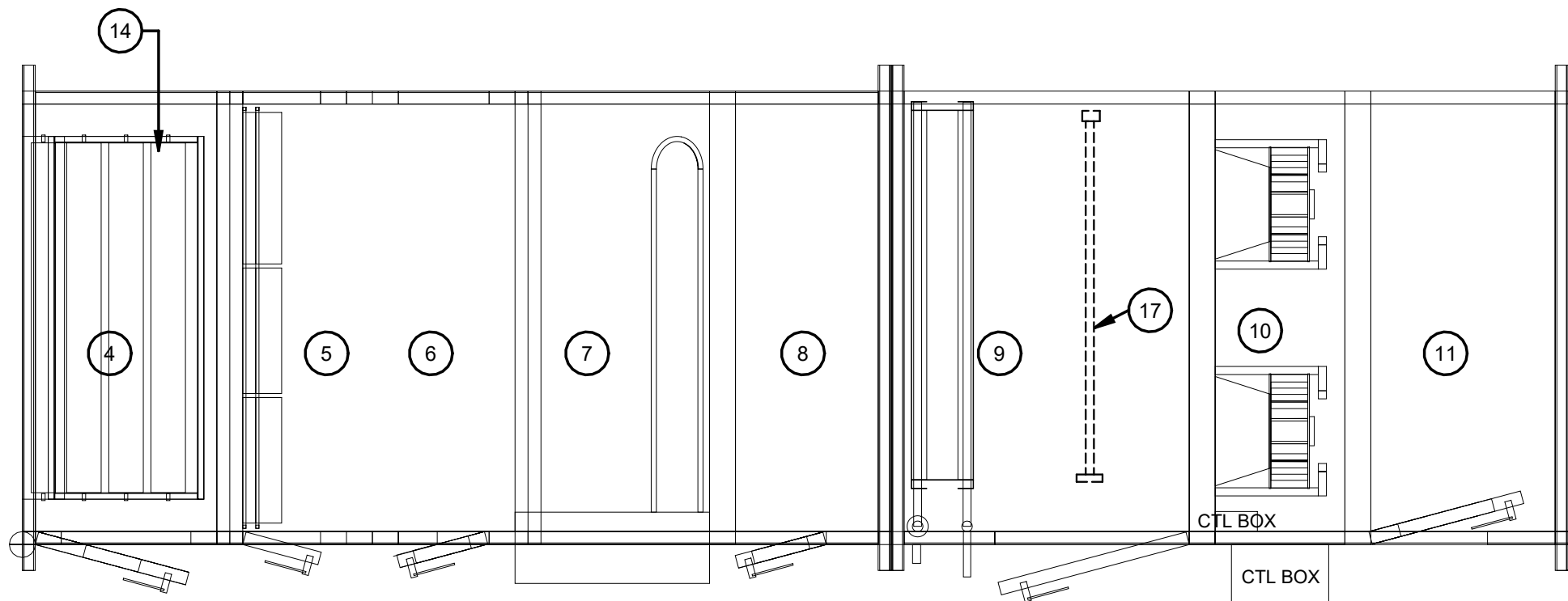
Drawing sheets
H0.4

12/12/2025 10:02:44 AM



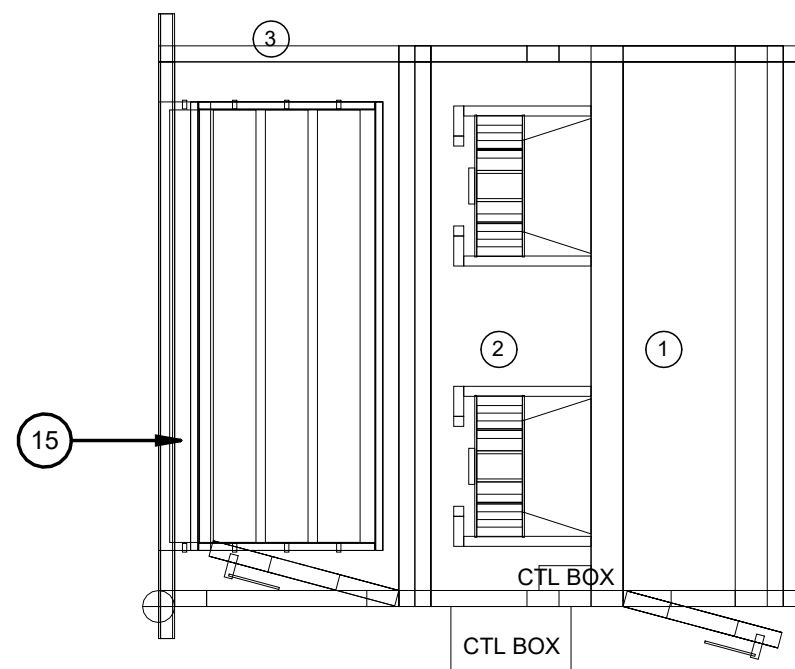
ELEVATION - FRONT

SCALE: NTS



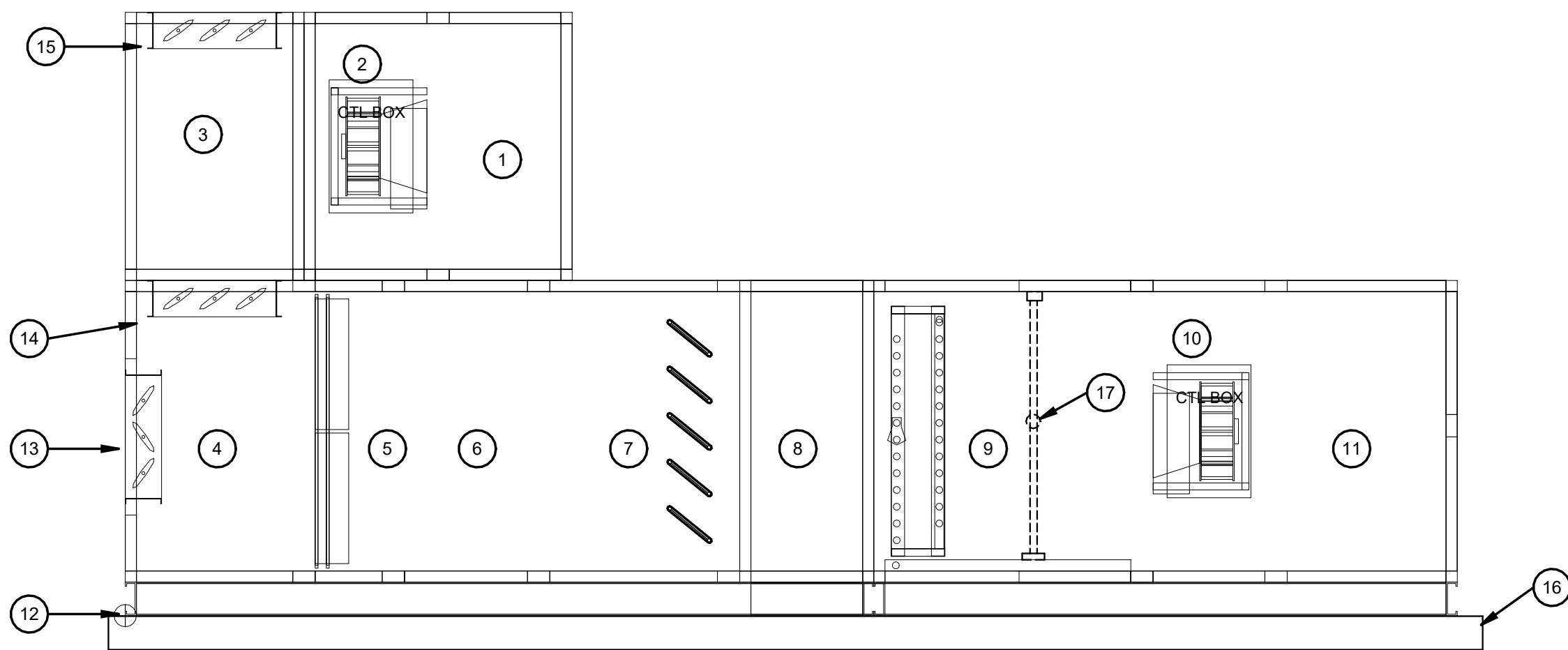
PLAN VIEW - BOTTOM DECK

SCALE: NTS



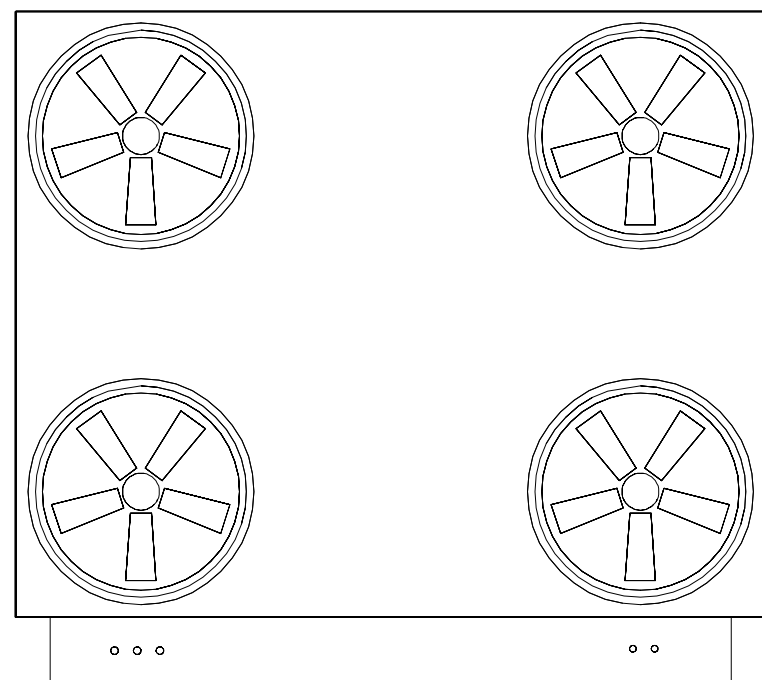
PLAN VIEW - TOP DECK

SCALE: NTS



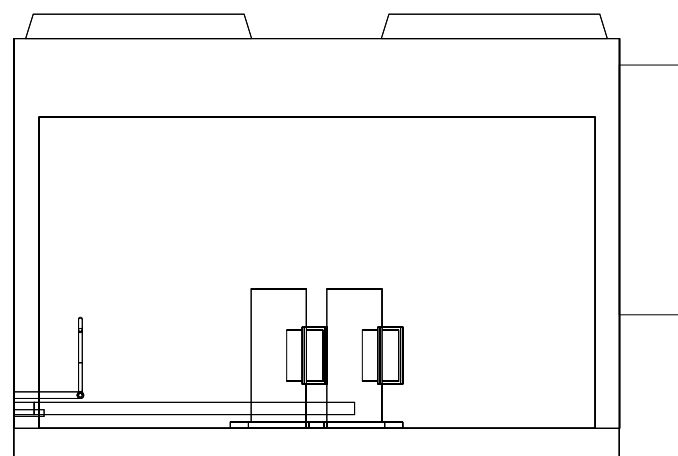
ELEVATION - LEFT SIDE

SCALE: NTS



PLAN VIEW - TOP

SCALE: NTS



ELEVATION - SIDE

SCALE: NTS

GENERAL AHU NOTES

- THE H.C. SHALL COORDINATE WITH THE CONSTRUCTION MANAGER TO RECEIVE SHIPMENT OF THE AHU AND CONDENSING UNIT AT THE PROJECT SITE AND INSTALL THE NEW AIR HANDLING UNIT.
- THE H.C. SHALL PROVIDE ALL ADDITIONAL REFRIGERANT PIPING, COMPONENTS (I.E. EXPANSION VALVES, ETC.) AND CHARGE REQUIRED, TO FILL PIPING SYSTEM. COORDINATE REQUIRED REFRIGERANT LINE SIZES WITH UNIT MANUFACTURER.

AHU DETAIL NOTES

- RETURN AIR PLENUM SECTION - 22"x24" ACCESS DOOR, REAR OPENING AND LIGHT.
- ECM RETURN FAN ARRAY SECTION AND CONTROLLER.
- ECONOMIZER SECTION - RETURN/EXHAUST. ACCESS DOOR AND LIGHT.
- ECONOMIZER MIXING SECTION - RETURN/OUTDOOR AIR. ACCESS DOOR AND LIGHT.
- COMBINATION PANEL AND BAG FILTER SECTION - 2" MERV 9, 4" MERV 13. ACCESS DOOR.
- ACCESS SECTION - 20"x34" DOOR AND LIGHT.
- HOT WATER COIL W/ PUMP - SEE COIL DETAIL, THIS SHEET.
- ACCESS SECTION - 22"x44" ACCESS DOOR.
- DX COOLING COIL - 24"x34" ACCESS DOOR AND LIGHT. S.S. SLOPED DRAIN PAN.
- ECM SUPPLY FAN ARRAY SECTION AND CONTROLLER.
- SUPPLY AIR PLENUM - 22"x40" ACCESS DOOR, TOP OPENING, LIGHT.
- 6" HIGH BASE RAIL.
- OUTDOOR AIR DAMPER.
- RETURN AIR DAMPER.
- RELIEF AIR DAMPER.
- CONCRETE EQUIPMENT PAD. REFER TO DETAIL.
- ULTRAVIOLET LIGHT AND FRAME EQUAL TO STERIL-AIRE #RLM, E.C. TO PROVIDE 120V POWER FEED TO CONTROLLER. TOGGLE SWITCH ON CONTROLLER FACE. 185 WATTS, 1 ROW 42" LAMP, APD - 0.1 " W.C. MOUNT CONTROL PANEL WITH WATERPROOF TOGGLE SWITCH ON FACE OF CONTROLLER TO AIR HANDLING UNIT.

CONDENSING UNIT SCHEDULE

UNIT	CU-1
UNIT LOCATION	ON GRADE
DESCRIPTION	AIR-COOLED CONDENSING UNIT
MANUFACTURER/MODEL	DAIKIN #DCSA030
LENGTH / WIDTH / HEIGHT	76" x 97" x 83"
UNIT WEIGHT (LBS)	2,621
CONDENSING SECTION	
COOLING CAPACITY (MBH)	330
REFRIGERANT TYPE	R32
NO. OF CIRCUITS	2
SUCTION LINE SIZE	(2) 1.62"
LIQUID LINE SIZE	(2) 0.88"
TOTAL REFRIGERANT CHARGE [LBS]	17.6 + 19.2
ELECTRICAL	
EER	12.0
IEER	17.9
MCA/MOCP	143/175
VOLTAGE / PHASE	208/3

NOTES:

- REFER TO SPECIFICATIONS FOR OPTIONS AND ACCESSORIES.
- MOUNTING - 6" EXT. CONCRETE PAD WITH VIBRATION ISOLATOR PADS.

AIR HANDLING UNIT SCHEDULE

UNIT	AHU-1
AREA SERVED	OFFICES
UNIT LOCATION	MECH RM
DESCRIPTION	CENTRAL STATION INDOOR AIR HANDLING.
MANUFACTURER/SIZE	DAIKIN #CAH018GDCM
DIMENSIONS (LxWxH)	196" x 88" x 86"
SUPPLY FANS - ECM FAN ARRAY - QTY. 2	
FAN TYPE	DIRECT DRIVE PLENUM AIRFOIL
TOTAL AIR FLOW	8,000
FAN SPEED (RPM)	2,258
EXTERNAL S.P. (INCHES W.G.)	2.0
FAN SIZE (EACH)	17.71"
ELECTRICAL - V/PH	208/3
SUPPLY FAN CIRCUIT - MCA/MOCP	37.4/50
MOTOR H.P. (EACH)	(2x) 6.7
MOTOR B.H.P.	(2x) 3.90
FAN ENERGY INDEX (FEI)	1.38
VARIABLE FREQUENCY DRIVE/ECM	ECM
FILTER	
PRE-FILTER TYPE	2" MERV 9
FINAL FILTER TYPE	4" MERV 13
HEATING COIL - HOT WATER COIL - 1 COIL, 1 ROW	
HEATING AIR FLOW (CFM)	6,000
CAPACITY (MBH)	72
ATR (DEG. F)	12
ENT. AIR TEMP (DB)	58
LVG. AIR TEMP (DB)	70
MAX. AP DROP (INCHES W.G.)	0.04
FLOW RATE (GPM)	7.2
COIL WPD (FT. HD)	5
WTD (DEG. F)	20
DX REFRIGERANT COIL- 1 COIL, 5 ROWS	
REFRIGERANT TYPE	R32
COOLING AIR FLOW (CFM)	8,000
MIN. FACE AREA (SQ. FT)	16.87
FACE VELOCITY (FPM)	474
TOTAL CAPACITY (MBH)	330
SENS. CAPACITY (MBH)	218
ENT. AIR TEMP (DB/WB)	80/67
LVG. AIR TEMP (DB/WB)	53.6/52.8
MAX. AP DROP (INCHES W.G.)	0.71
RETURN FAN - ECM FAN ARRAY - QTY. 2	
FAN TYPE	DIRECT DRIVE PLENUM AIRFOIL
TOTAL AIR FLOW	7,500
FAN SPEED (RPM)	2,838
TOTAL S.P. (INCHES W.G.)	0.75"
FAN SIZE (EACH)	17.71"
ELECTRICAL - V/PH	208/3
RETURN FAN CIRCUIT MCA/MOCP	12.8/15.0
MOTOR H.P.	(2x) 2.1
MOTOR B.H.P.	(2x) 0.96
FAN ENERGY INDEX (FEI)	0.73
VARIABLE FREQUENCY DRIVE/ECM	ECM
VENTILATION REQUIREMENTS	
MIN. OUTSIDE AIR (CFM)	955

NOTES:

- MOUNTING - 4" CONCRETE EQUIPMENT PAD - REFER TO DETAIL.
- PROVIDE UV LIGHT IN COOLING COIL SECTION.

NAUMAN & ZELINSKI LLC.
204 S. Ludlow Street Suite 400 Dayton, Ohio 45402
Phone (937) 233-3821
PROJECT # 25029

App Architecture
creative focused design



JEFFERY D. ZELINSKI, LICENSE #63822
EXPIRATION DATE 12/31/2025

Office Renovation and Addition
City of Huber Heights Tax, Finance
& Water Departments

6131 Taylorsville Road, Huber Heights, OH 45424

ISSUE		
NO.	DATE	DESCRIPTION
3	11/12/25	FOR CONSTRUCTION
	12/12/25	ADDENDUM 3

E	

DATE	11/12/25
JOB NO.	4278.01
DRAWN	DRH
CHECKED	JDZ

COPYRIGHT © 2025 - App Architecture, Inc.

TITLE
AIR HANDLING UNIT
SECTIONS & DETAILS

SHEET NO.

H0.4