



CITY OF MIAMISBURG SYCAMORE TRAILS AQUATIC CENTER MIAMISBURG, OHIO



VICINITY MAP



KEYMAP

ISSUED FOR CONSTRUCTION - JANURARY 17th, 2025

ADDENDUM #01 - FEBRUARY 3rd, 2025
ADDENDUM #02 - FEBRUARY 12th, 2025

ARCHITECT



10 South Patterson Blvd.
Dayton, OH 45402
Tel: 937.224.4474

CIVIL ENGINEER / LANDSCAPE ARCHITECTURE



6219 Centre Park Drive
West Chester, OH 45069
Tel: 513.779.7851

STRUCTURAL ENGINEER



537 East Pete Rose Way, Ste. 400
Cincinnati, OH 45202
Tel: 513.542.3300

MEP ENGINEER



1400 West Dorothy Lane
Dayton, OH 45409
Tel: 937.224.0861

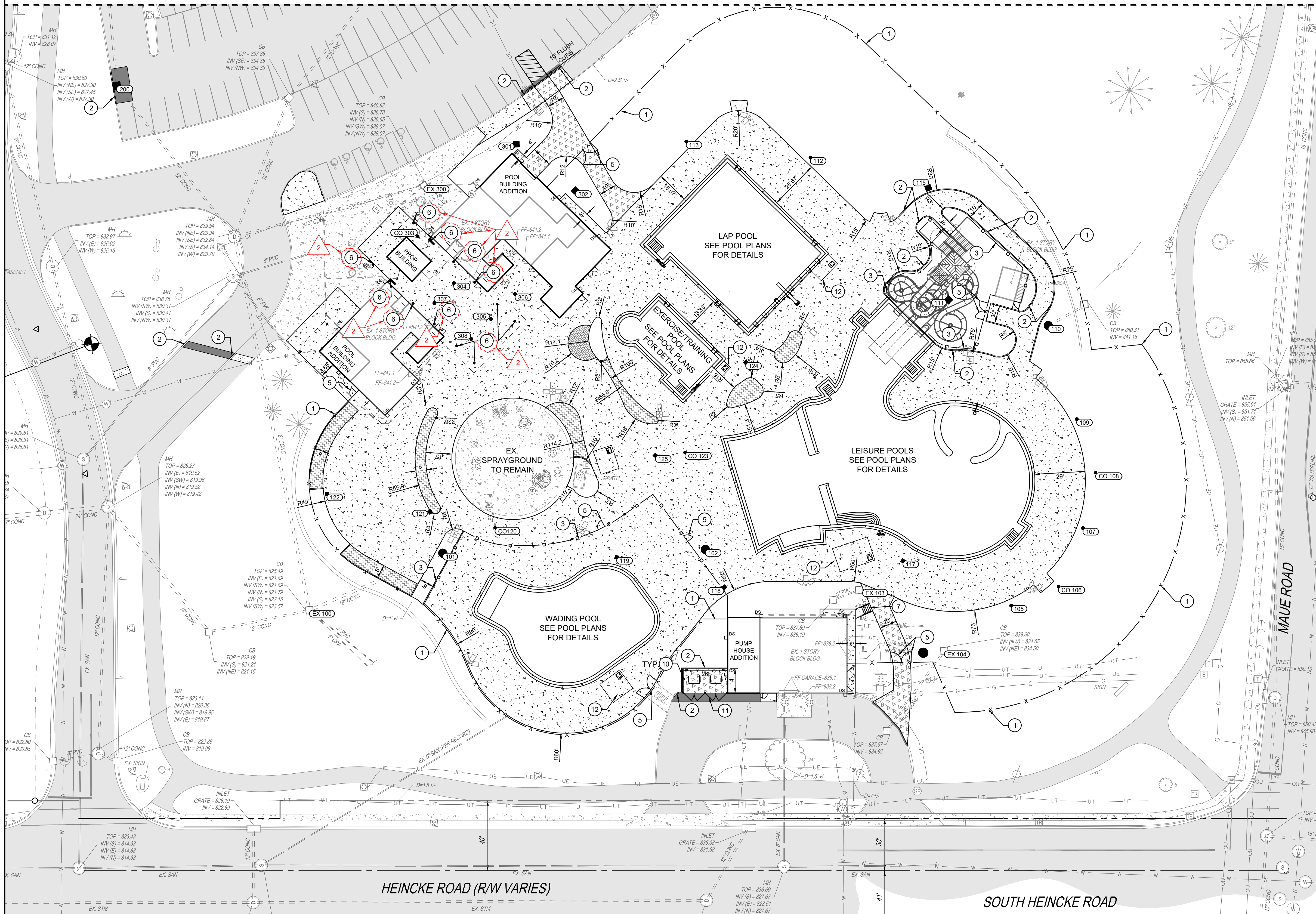
AQUATIC DESIGNER



Counsilman - Hunsaker
AQUATICS FOR LIFE

12851 Manchester Road,
Suite 120
St. Louis, MO 63131
Tel: 314.894.1245

MATCHLINE. SEE SHEET C131



PROPOSED LEGEND

- CATCH BASIN
- CURB INLET
- YARD DRAIN
- MANHOLE
- STORM SEWER CLEANOUT
- DOWNSPOUT
- LIGHT POLE. SEE ELECTRIC PLANS FOR DETAILS.
- STANDARD DUTY ASPHALT PAVEMENT PER DETAIL 1/C100
- LIGHT DUTY ASPHALT PAVEMENT PER DETAIL 2/C100
- HEAVY DUTY CONCRETE PAVEMENT PER DETAIL 3/C100
- CONCRETE WALK PER DETAIL 6/C100
- UNIT PAVERS. SEE LANDSCAPE PLANS FOR DETAILS.
- SYNTHETIC TURF. SEE LANDSCAPE PLANS FOR DETAILS.

LOCATION PLAN KEY NOTES

- 1 8' TALL VINYL COATED CHAIN LINK FENCE. SEE LANDSCAPE PLANS FOR DETAILS.
- 2 BARRIER CURB PER DETAIL 4/C100
- 3 4' TALL ALUMINUM FENCE. SEE LANDSCAPE PLANS FOR DETAILS.
- 4 6' LONG, 1" WIDE PIANO-KEY STRIPED CROSSWALK, 3' O.C.
- 5 GATE. SEE LANDSCAPE PLANS FOR DETAILS.
- 6 COLUMN. REFER TO ARCHITECTURAL PLANS.
- 7 STAIRS AND HANDRAIL PER DETAIL 10/C100
- 8 TIE PROPOSED WALKING PATH TO EXISTING BRICK PAVERS
- 9 ACCESSIBLE PARKING SIGN PER DETAIL 5/C100
- 10 PIPE BOLLARD PER DETAIL 13/C100
- 11 DUMPSTER ENCLOSURE. SEE LANDSCAPE PLANS FOR DETAILS.
- 12 SURGE TANK. REFER TO POOL PLANS.
- 13 CONCRETE WHEEL STOP PER DETAIL 1/C101
- 14 CURB RAMP - PERPENDICULAR WITH FLARED SIDES PER DETAIL 3/C101
- 15 CURB RAMP - DOUBLE SIDED PARALLEL PER DETAIL 2/C100

LOCATION PLAN GENERAL NOTES

- A. ALL DIMENSIONS ARE TO THE EDGE OF PAVEMENT AND/OR BACK OF CURB UNLESS OTHERWISE NOTED
- B. ALL STANDARD PARKING SPACES ARE TO BE 9.5X18 UNLESS OTHERWISE NOTED
- C. PARKING LOT STRIPING SHALL BE 4" WIDE HIGHWAY-TYPE APPLIED IN ACCORDANCE WITH THE PLAN
- D. ALL RADII TO BE 5' UNLESS OTHERWISE NOTED



10 S Patterson Blvd
Dayton, OH 45402
T 937.224.4474



ISSUANCES

No.	Description	Date
0	Issued for Construction	01/17/25
2	Addendum #2	02/12/25

Drawn By

Checked By

Client Number

Project Number

DRAWING TITLE

LOCATION PLAN

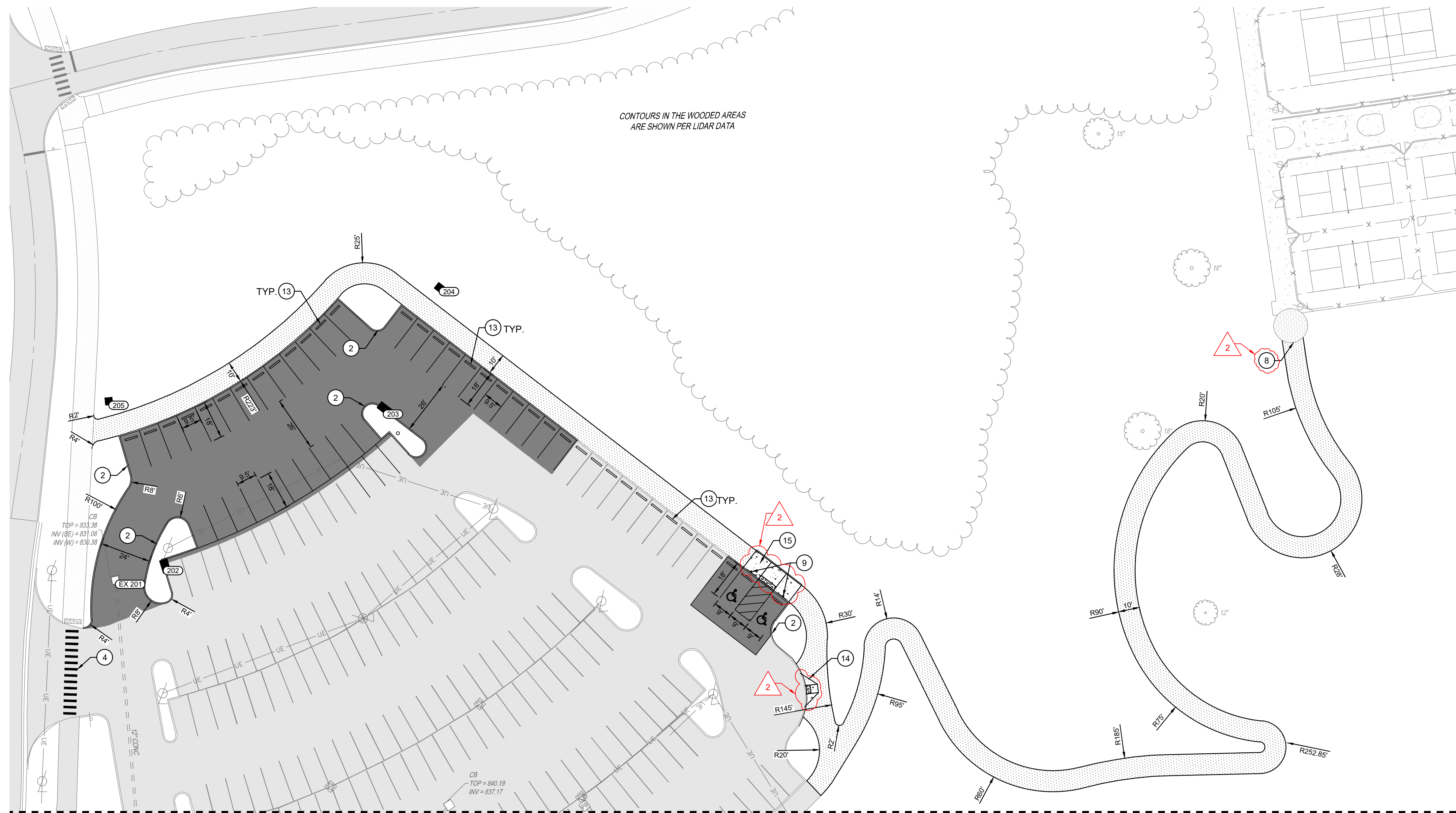
SHEET NO.

C130



NOTE:
UNDERGROUND UTILITIES ARE PLOTTED FROM A COMPILATION OF AVAILABLE RECORD INFORMATION AND SURFACE INDICATIONS OF UNDERGROUND STRUCTURES AND MAY NOT BE INCLUSIVE. PRECISE LOCATIONS AND THE EXISTENCE OR NON EXISTENCE OF UNDERGROUND UTILITIES CANNOT BE VERIFIED. PLEASE NOTIFY THE OHIO UTILITY PROTECTION SERVICE AT 811 OR 1-800-362-2764 BEFORE ANY PERIOD OF EXCAVATION OR CONSTRUCTION ACTIVITY.





MATCHLINE. SEE SHEET C130

PROPOSED LEGEND

- (100) CATCH BASIN
- (100) CURB INLET
- (100) YARD DRAIN
- (100) MANHOLE
- °° STORM SEWER CLEANOUT
- °° DOWNSPOUT
- ⊕ LIGHT POLE. SEE ELECTRIC PLANS FOR DETAILS.
- ▒ STANDARD DUTY ASPHALT PAVEMENT PER DETAIL 1/C100
- ░ LIGHT DUTY ASPHALT PAVEMENT PER DETAIL 2/C100
- ▤ HEAVY DUTY CONCRETE PAVEMENT PER DETAIL 3/C100
- ▨ CONCRETE WALK PER DETAIL 6/C100
- ▩ UNIT PAVERS. SEE LANDSCAPE PLANS FOR DETAILS.
- SYNTHETIC TURF. SEE LANDSCAPE PLANS FOR DETAILS.

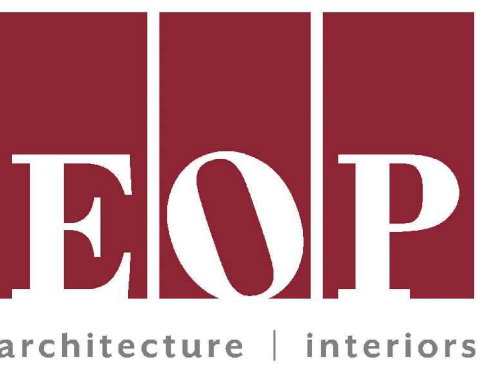
LOCATION PLAN KEY NOTES

- 1 8' TALL VINYL COATED CHAIN LINK FENCE. SEE LANDSCAPE PLANS FOR DETAILS.
- 2 BARRIER CURB PER DETAIL 4/C100
- 3 4' TALL ALUMINUM FENCE. SEE LANDSCAPE PLANS FOR DETAILS.
- 4 6' LONG, 1' WIDE PIANO-KEY STRIPED CROSSWALK, 3' O.C.
- 5 GATE. SEE LANDSCAPE PLANS FOR DETAILS.
- 6 COLUMN. REFER TO ARCHITECTURAL PLANS.
- 7 STAIRS AND HANDRAIL PER DETAIL 10/C100
- 8 TIE PROPOSED WALKING PATH TO EXISTING BRICK PAVERS
- 9 ACCESSIBLE PARKING SIGN PER DETAIL 5/C100
- 10 PIPE BOLLARD PER DETAIL 13/C100
- 11 DUMPSTER ENCLOSURE. SEE LANDSCAPE PLANS FOR DETAILS.
- 12 SURGE TANK. REFER TO POOL PLANS.
- 13 CONCRETE WHEEL STOP PER DETAIL 1/C101
- 14 CURB RAMP- PERPENDICULAR WITH FLARED SIDES PER DETAIL 3/C101
- 15 CURB RAMP - DOUBLE SIDED PARALLEL PER DETAIL 2/C100

LOCATION PLAN GENERAL NOTES

- A. ALL DIMENSIONS ARE TO THE EDGE OF PAVEMENT AND/OR BACK OF CURB UNLESS OTHERWISE NOTED
- B. ALL STANDARD PARKING SPACES ARE TO BE 9.5X18 UNLESS OTHERWISE NOTED
- C. PARKING LOT STRIPING SHALL BE 4" WIDE HIGHWAY-TYPE APPLIED IN ACCORDANCE WITH THE PLAN
- D. ALL RADII TO BE 5' UNLESS OTHERWISE NOTED

CONTOURS IN THE WOODED AREAS ARE SHOWN PER LIDAR DATA



10 S Patterson Blvd
Dayton, OH 45402
T 937.224.4474

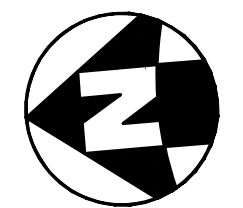
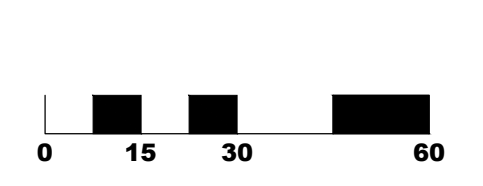


ISSUANCES

No.	Description	Date
0	Issued for Construction	01/17/25
2	Addendum #2	02/12/25



NOTE:
UNDERGROUND UTILITIES ARE PLOTTED FROM A COMPILATION OF AVAILABLE RECORD INFORMATION AND SURFACE INDICATIONS OF UNDERGROUND STRUCTURES AND MAY NOT BE INCLUSIVE. PRECISE LOCATIONS AND THE EXISTENCE OR NON EXISTENCE OF UNDERGROUND UTILITIES CANNOT BE VERIFIED. PLEASE NOTIFY THE OHIO UTILITY PROTECTION SERVICE AT 811 OR 1-800-362-2764 BEFORE ANY PERIOD OF EXCAVATION OR CONSTRUCTION ACTIVITY.

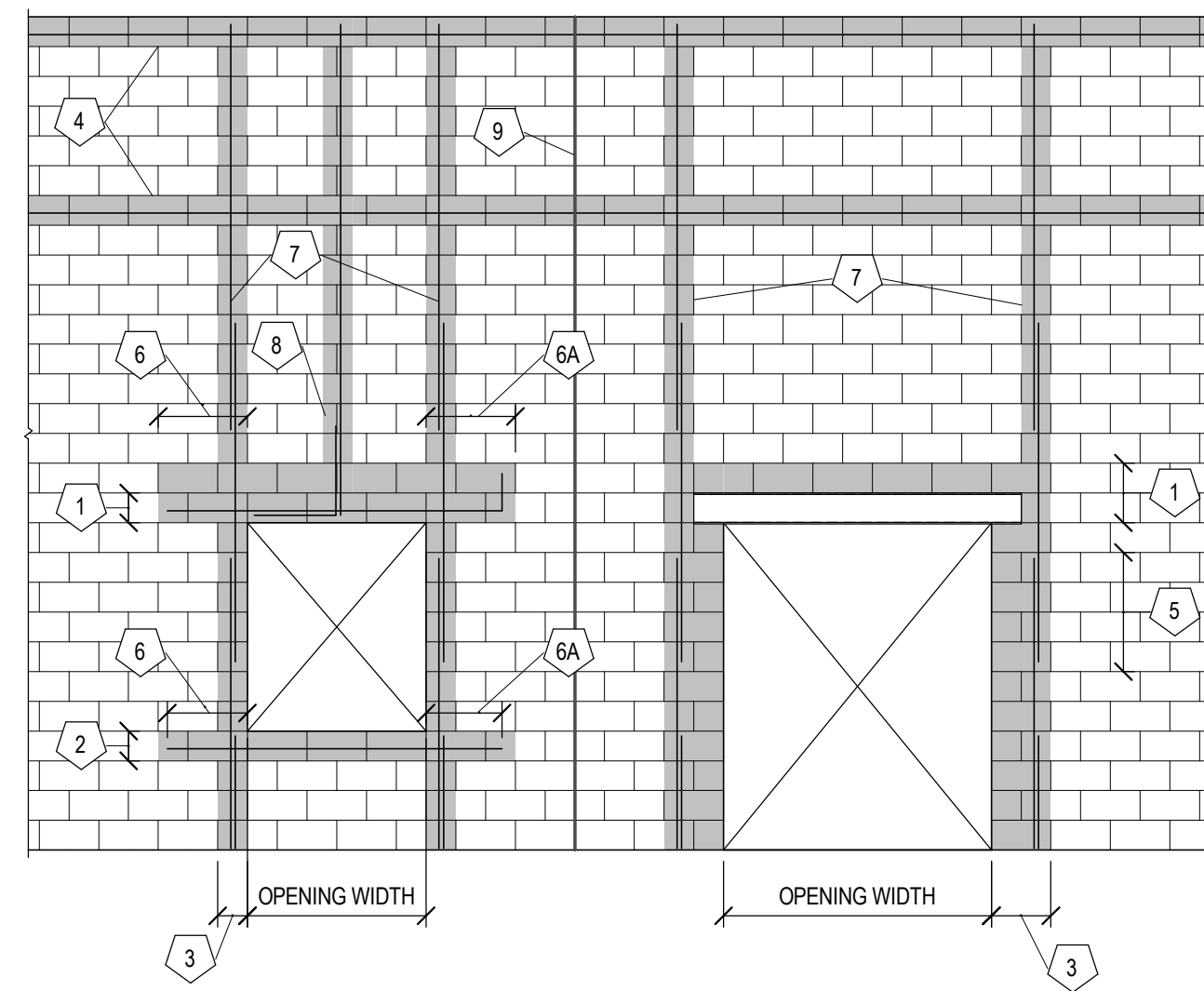


Drawn By	
Checked By	
Client Number	
Project Number	

DRAWING TITLE	LOCATION PLAN
SHEET NO.	C131

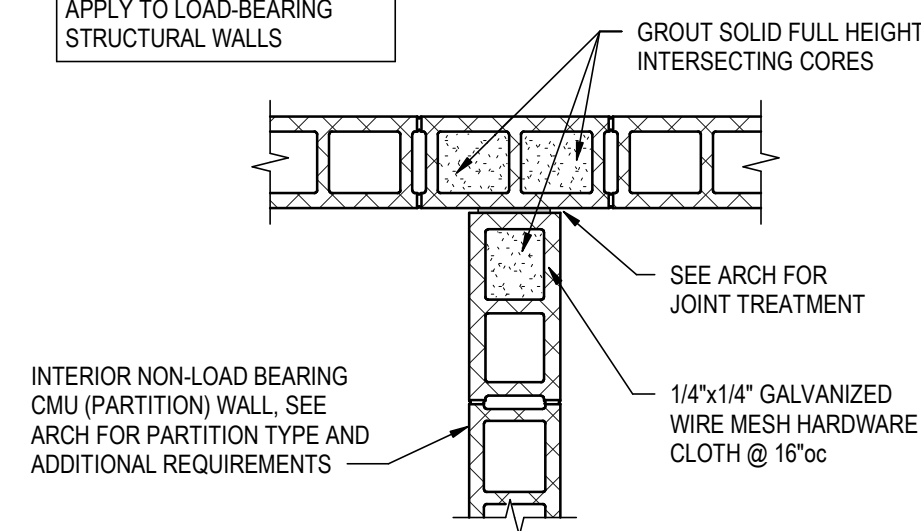
- CMU WALL KEYNOTES:**
- SEE LINTEL SCHEDULE FOR LINTELS ABOVE OPENINGS. SEE PLAN FOR LINTEL MARKS.
 - PROVIDE (1) #5 SILL REINFORCING AT OPENINGS.
 - FOR JAMB REINFORCING AT OPENINGS, SEE DETAIL CALLED OUT ON PLAN OR TYPICAL VERTICAL BARS ON EACH SIDE OF OPENINGS ON THIS DRAWING.
 - SEE RELATING WALL SECTIONS AND ELEVATIONS FOR BOND BEAM LOCATIONS AND REINFORCING.
 - SEE CMU WALL REINFORCING SCHEDULE FOR LAP SPICE LENGTH.
 - EXTEND HORIZONTAL REINFORCING THE GREATER OF 24 INCHES OR 40 BAR DIAMETERS BEYOND FACE OF OPENING:
 - WHERE BARS ARE UNABLE TO EXTEND FULL LENGTH, TERMINATE BARS WITH STANDARD HOOK.
 - AT OPENINGS IN EXTERIOR WALLS, EXTEND VERTICAL REINFORCING TO TOP OF WALL. AT OPENINGS IN INTERIOR WALLS, EXTEND VERTICAL REINFORCING BEYOND FLOOR ABOVE EQUAL TO VERTICAL SPICE LENGTH OR TO TOP OF WALL.
 - TYPICAL WALL REINFORCING ABOVE OPENINGS HAVE CORNER BARS (30 D₆ EA LEG) LAPPED AND TIED WITH HORIZONTAL LINTEL REINFORCING.
 - SEE FOUNDATION PLANS FOR CONTROL JOINT LOCATIONS AND TYPICAL VERTICAL BARS @ CONTROL JOINTS' DETAIL ON THIS DRAWING.

- TYPICAL WALL NOTES:**
- TYPICAL WALL REINFORCING NOT SHOWN FOR CLARITY. SEE PLAN FOR MARKS AND SCHEDULE FOR TYPICAL GROUT, REINFORCING SIZE AND SPACING.

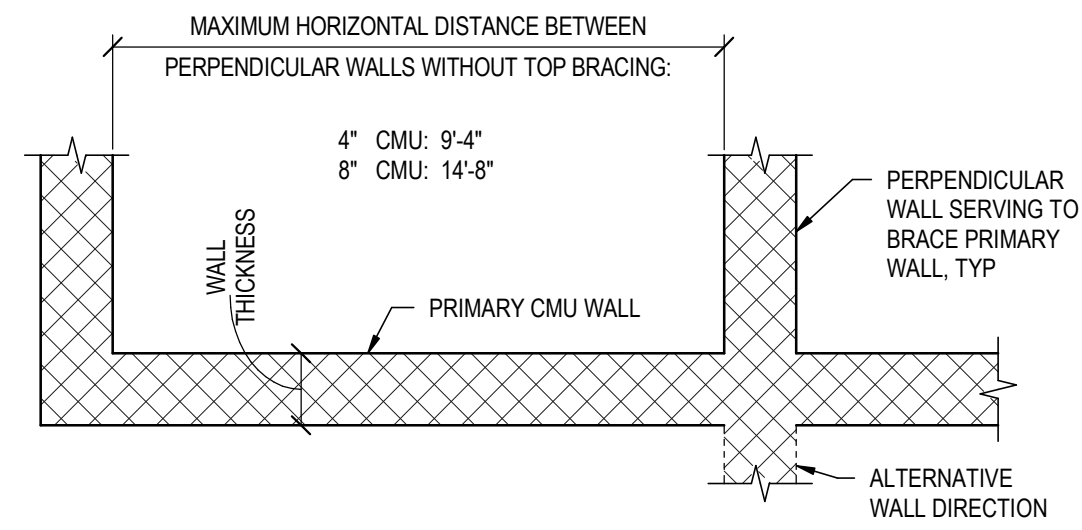


TYPICAL MASONRY ELEVATION
NTS

NOTE: THIS DETAIL DOES NOT APPLY TO LOAD-BEARING STRUCTURAL WALLS



NON-LOAD BEARING CMU PARTITION WALL T-INTERSECTION
PLAN VIEW (NTS)

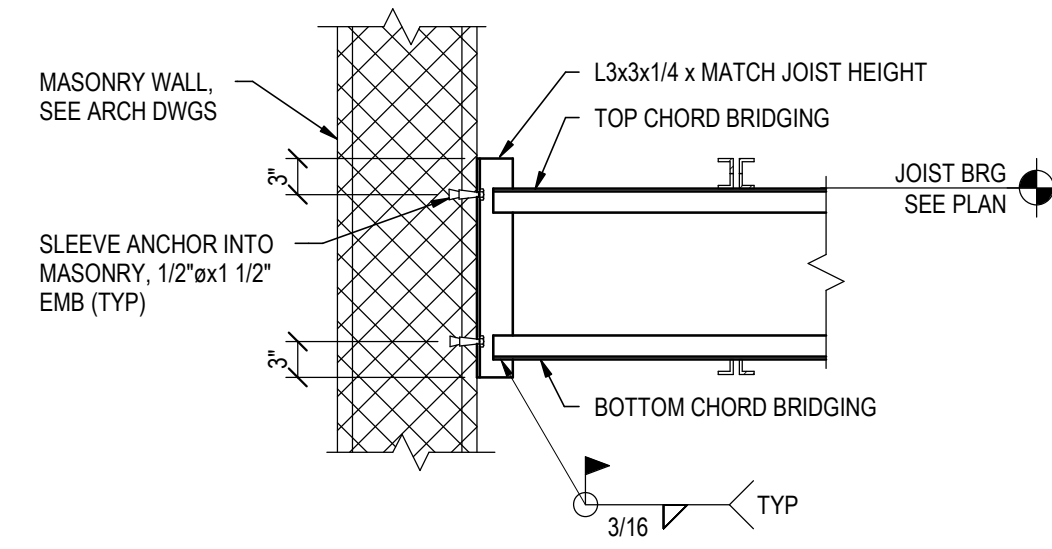


NON-LOAD BEARING CMU PARTITION WALL HORIZONTAL BRACING
PLAN VIEW (NTS)

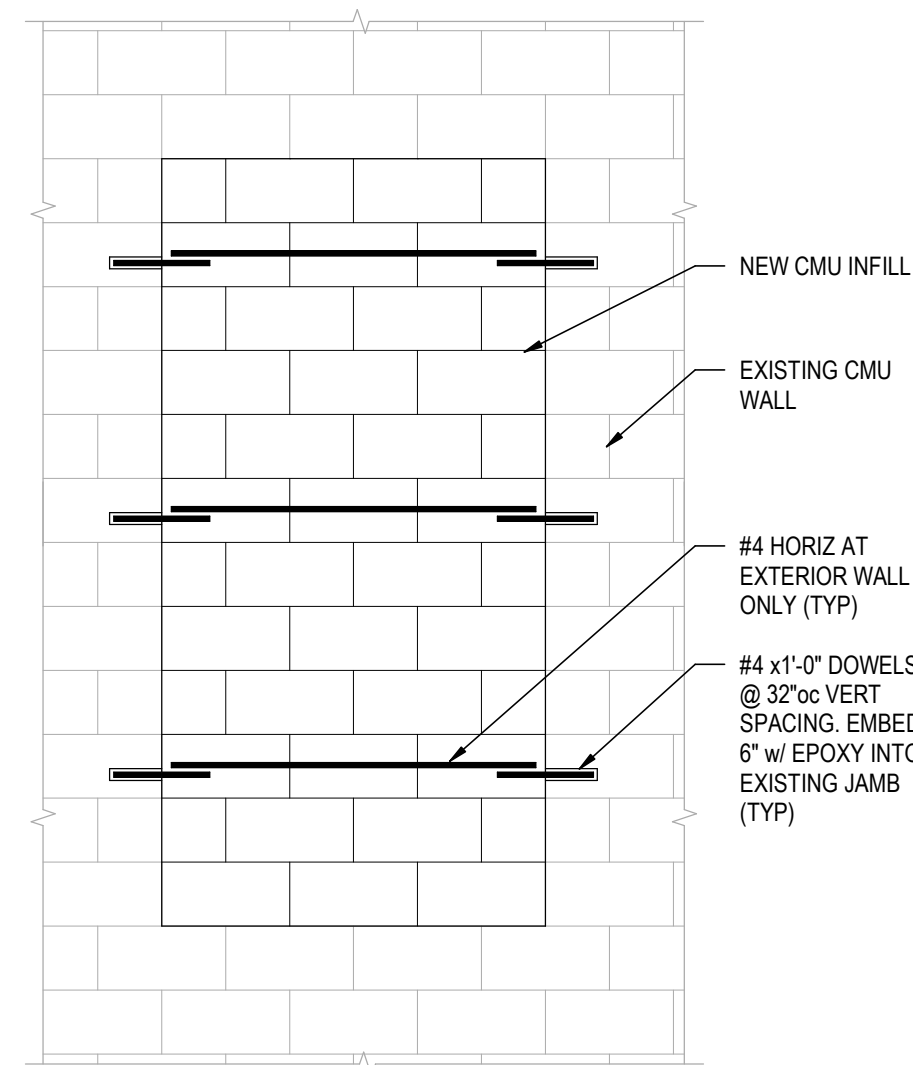
NON-LOAD BEARING CMU (PARTITION) WALL BRACING NOTES:

- INTERIOR CMU PARTITION WALLS CAN BE INSTALLED WITHOUT TOP BRACING PROVIDED ALL OF THE FOLLOWING CONDITIONS ARE MET:
 - THE WALL IS INTERSECTED AND ATTACHED W/ GROUT + MESH SCREENS PER THE PARTITION WALL T-INTERSECTION DETAIL.
 - THE PERPENDICULAR WALLS MEET THE SPACING CONDITIONS OF THE PLAN VIEW INFORMATION ABOVE.
 - THE PERPENDICULAR WALLS ARE AS TALL OR TALLER THAN THE WALL. IF THE ABOVE CONDITIONS ARE NOT MET, BRACE THE TOP OF WALLS ALONG THEIR LENGTH PER THE TYPICAL DETAILS THIS SHEET.
- COORDINATE PARTIAL HEIGHT PARTITION WALLS WITH ARCHITECT AND VERIFY LOCATIONS WHERE PARTITION WALLS ARE REQUIRED TO EXTEND TO BOT/STRUCTURE.
- SEE CMU WALL REINFORCING SCHEDULE ON S400 FOR NON-BEARING PARTITION WALL REINFORCING REQUIREMENTS.

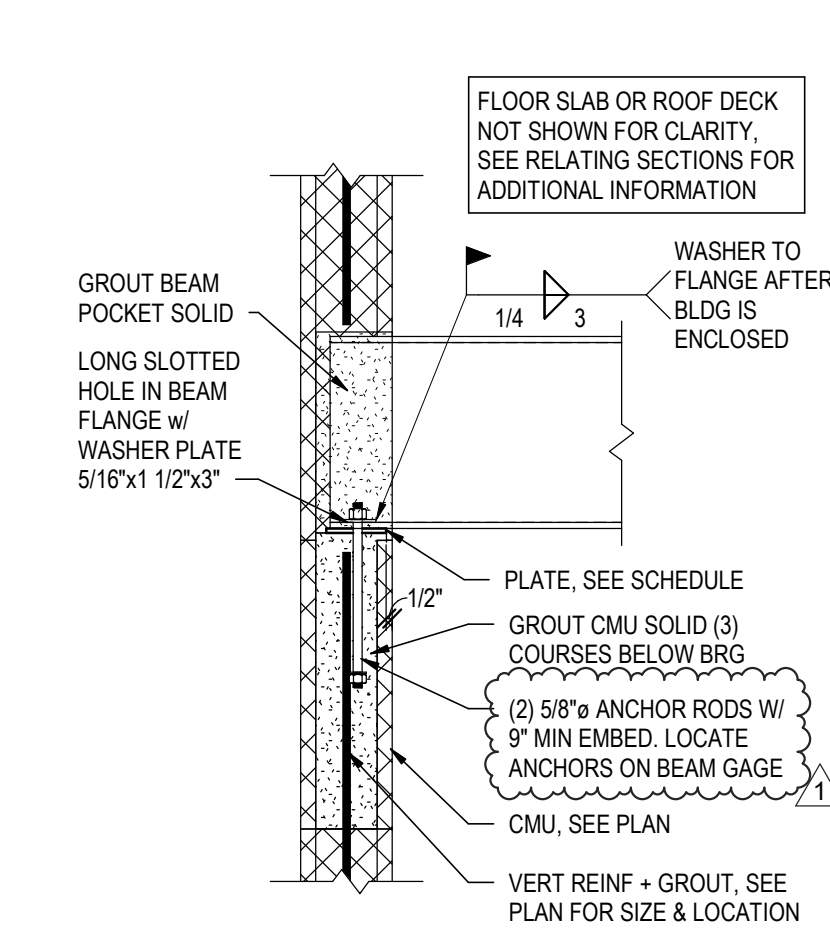
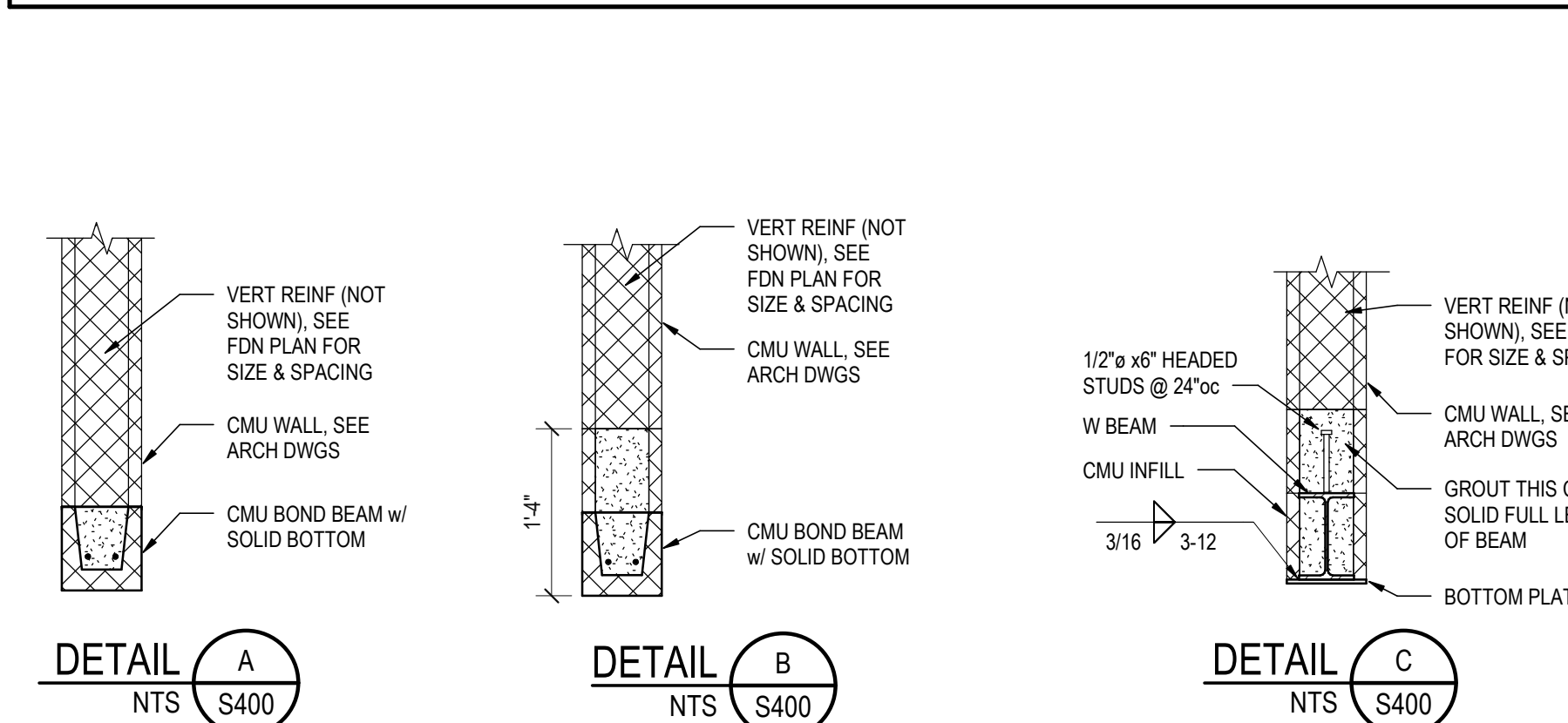
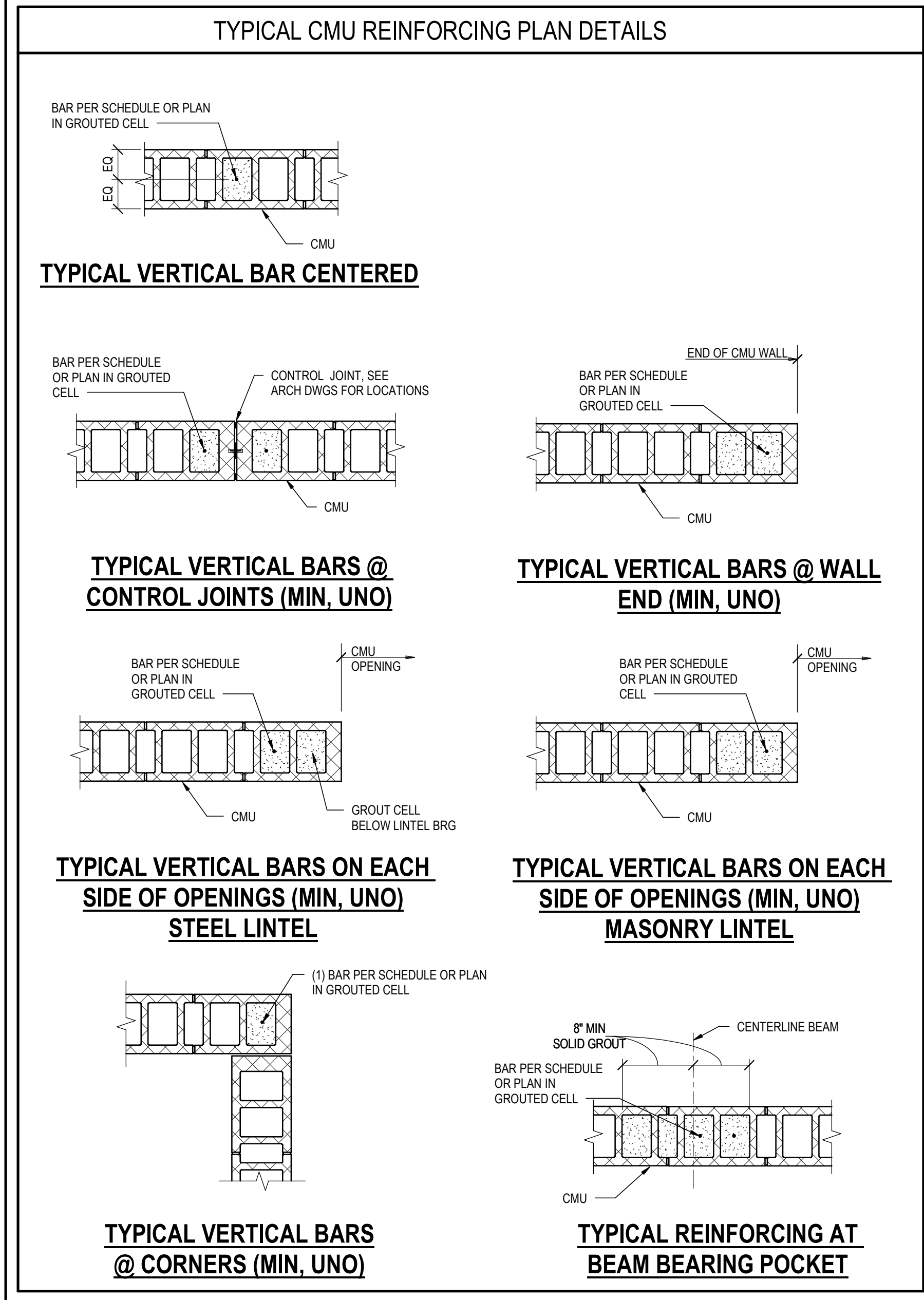
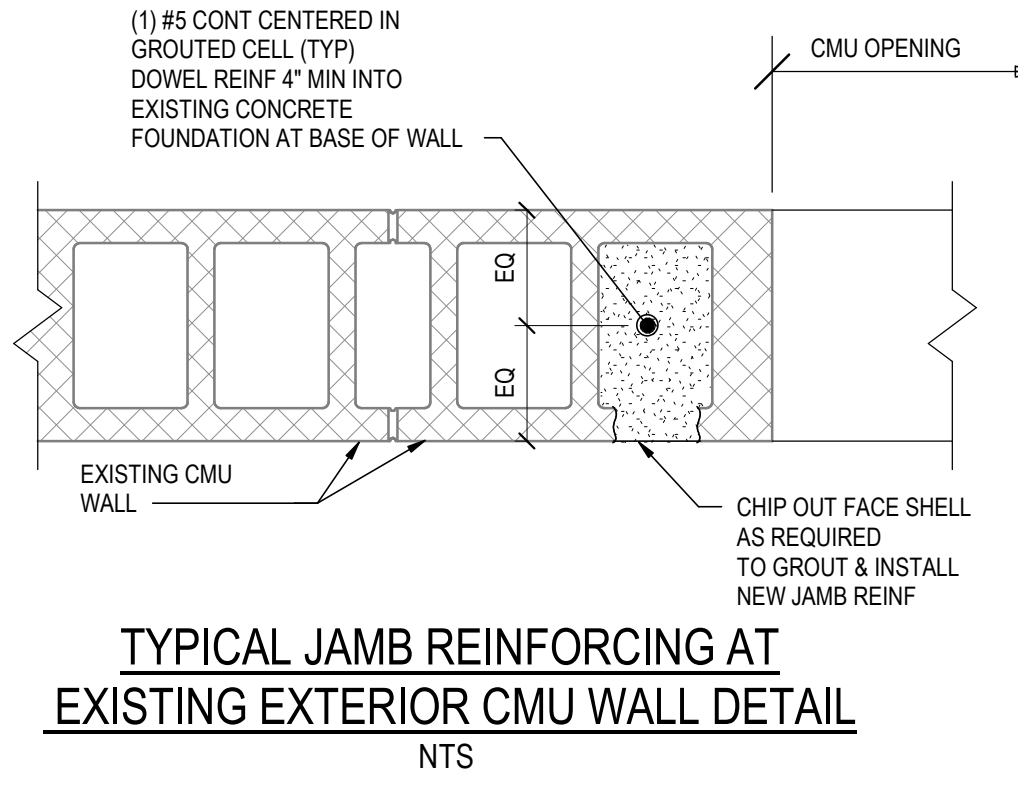
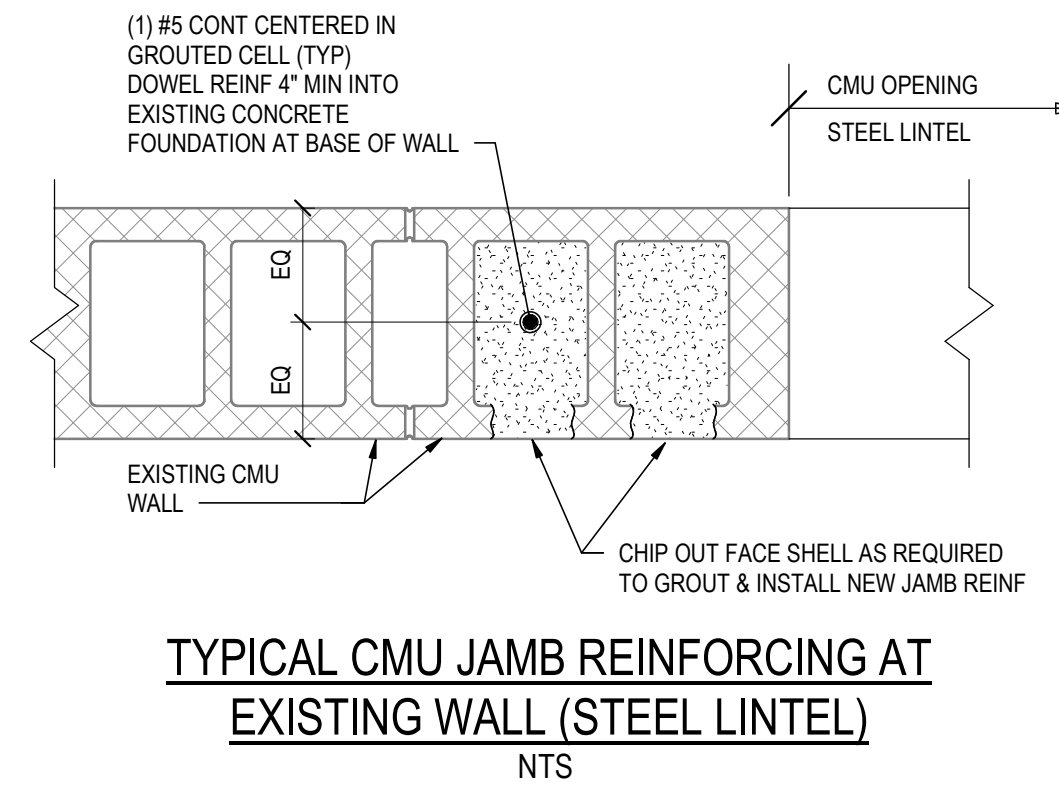
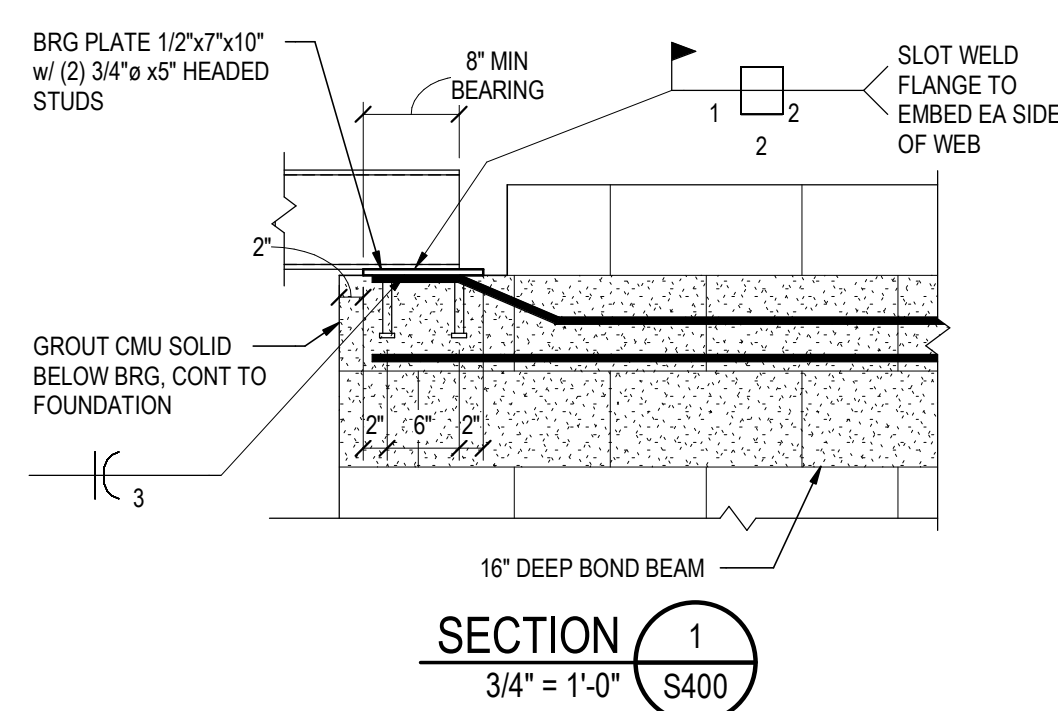
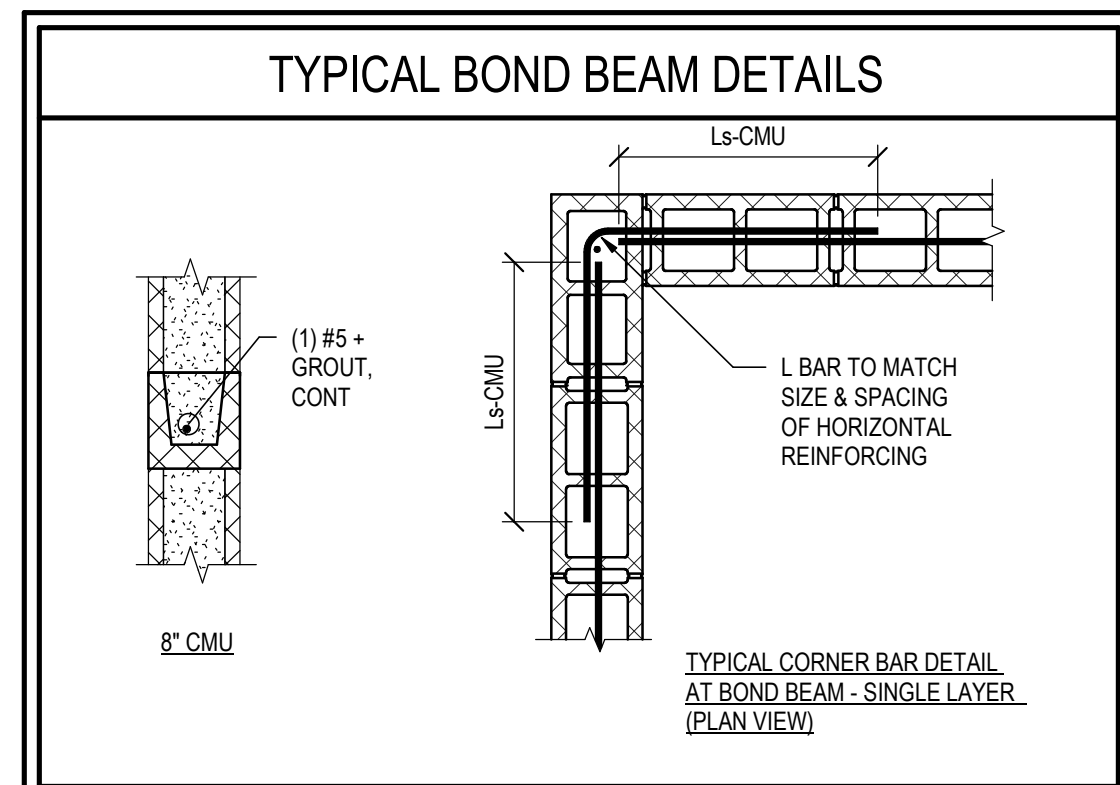
TYPICAL NON-LOAD BEARING CMU PARTITION WALL INFORMATION



TYPICAL JOIST BRIDGING TERMINATION AT MASONRY
NTS



TYPICAL CMU WALL INFILL
NTS



TYPICAL BEAM BEARING DETAIL
NTS

BEAM BEARING PLATE SCHEDULE		
BEAM SIZE	PLATE DIMENSIONS (L x N x B)	NOTES
W8, W10, W12, W14, W16	PL3/8x5-1/2x7-8"	AT 8" CMU

Wx	CMU WALL REINFORCING SCHEDULE				
MARK	CMU SIZE	TYPICAL VERTICAL REINFORCING	DETAIL	SPLICE LENGTH	SPLICE Fm
W1	8	(1) #5 @ 48"oc	1/S251	20"	2000PSI
W2	8	(1) #5 @ 16"oc	1/S251	20"	2000PSI

- NOTES:**
- "W1" - INDICATES VERTICAL WALL REINFORCING.
 - SOLID GROUT ALL CELLS CONTAINING REINFORCING.
 - REINFORCING TO BE PLACED IN CENTER OF GROUDED CELL UNLESS NOTED OTHERWISE.
 - EXTEND REINFORCING FROM PLAN LEVEL SHOWN DOWN TO LEVEL BELOW AND LAP PER SCHEDULE IN MASONRY SECTION OF GENERAL STRUCTURAL NOTES. EXTEND DOWEL OR BENT BAR OUT OF CONCRETE WALL OR FOOTING TO PROVIDE LAP WITH EACH CMU VERTICAL REINFORCING BAR.
 - ALL WALLS NOT NOTED WITH "W1" ON PLAN, USE WALL REINFORCEMENT MARK W2.

LN	CMU LINTEL SCHEDULE		
MARK	DETAIL	DESCRIPTION	REMARKS
L1	A/S251	8" TALL BOND BEAM w/ (2) #5 BOTTOM	
L2	B/S251	16" TALL BOND BEAM w/ (2) #5 BOTTOM	
L3	C/S251	W8x24 w/ BOTTOM PL1/4"x1"xCONT	

- NOTES:**
- PROVIDE 8" BEARING EACH END OF LINTEL, UNO.
 - CENTER LINTEL UNDER CMU, UNO IN PLAN OR SECTION.
 - STEEL LINTELS: POCKET LINTEL 6" MIN INTO 8" MASONRY WALL.

STRUCTURAL ENGINEERS
800.542.3302
schaefer-inc.com

schaefer

COPYRIGHT © 2024
THIS DOCUMENT IS THE PROPERTY OF SCHAEFER. NEITHER THE DOCUMENT NOR THE INFORMATION IT CONTAINS MAY BE COPIED OR USED FOR ANY OTHER THAN THE SPECIFIC PURPOSES FOR WHICH IT WAS PREPARED, WITHOUT THE WRITTEN CONSENT OF SCHAEFER.
Schaefer Project Number: 2412.31

CHAMPLIN
ARCHITECTURE

TOP
architecture | interiors

10 S Patterson Blvd
Dayton, OH 45402
T 937.224.4474

CITY OF MIAMISBURG
PARKS & RECREATION

Sycamore Trails Aquatic Center
400 S Heincke Rd, Miamisburg, OH 45342

ISSUANCES

No.	Description	Date
0	Issued for Construction	01/17/2025
1	ADDENDUM 2	02/11/2025

Drawn By
WCM

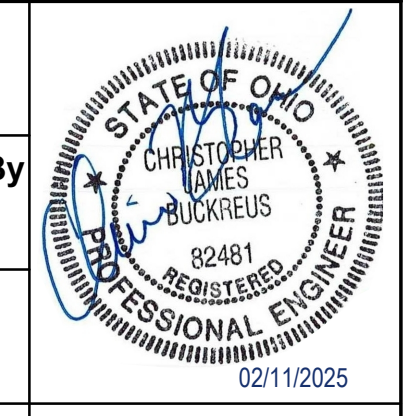
Checked By
QCB

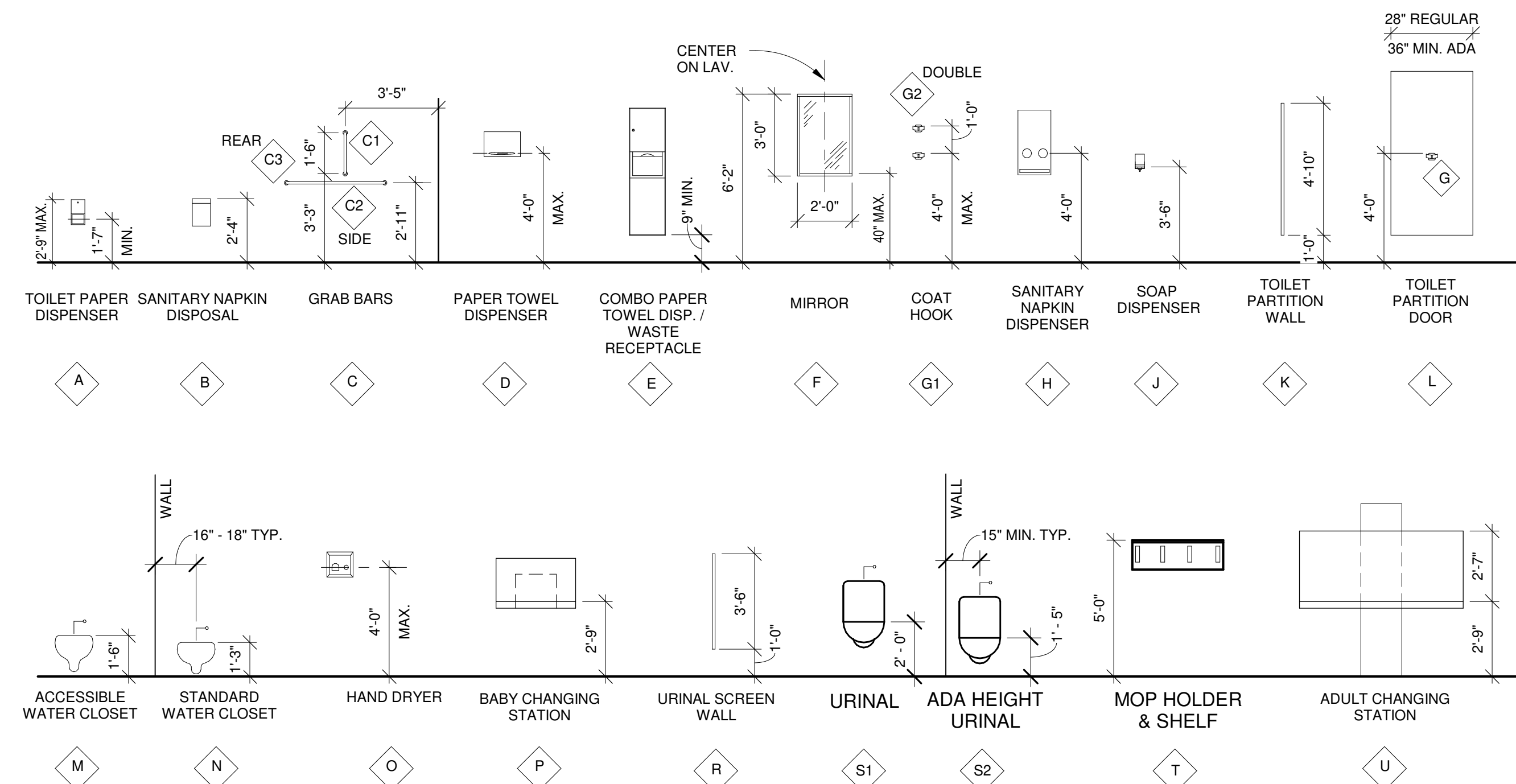
Client Number
2412.31

Project Number
2412.31

DRAWING TITLE
TYPICAL MASONRY DETAILS & SECTIONS & SCHEDULES

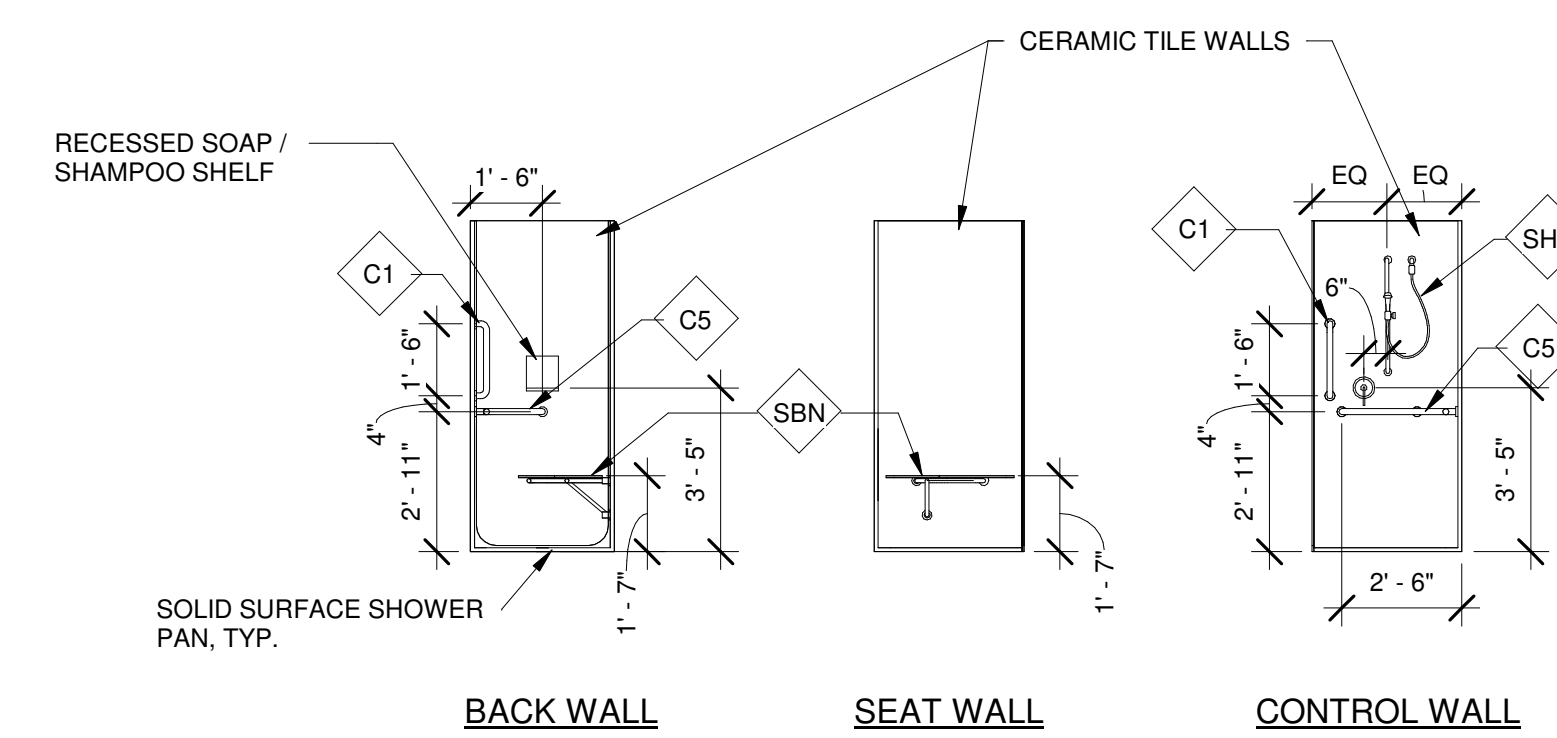
SHEET NO.
S400



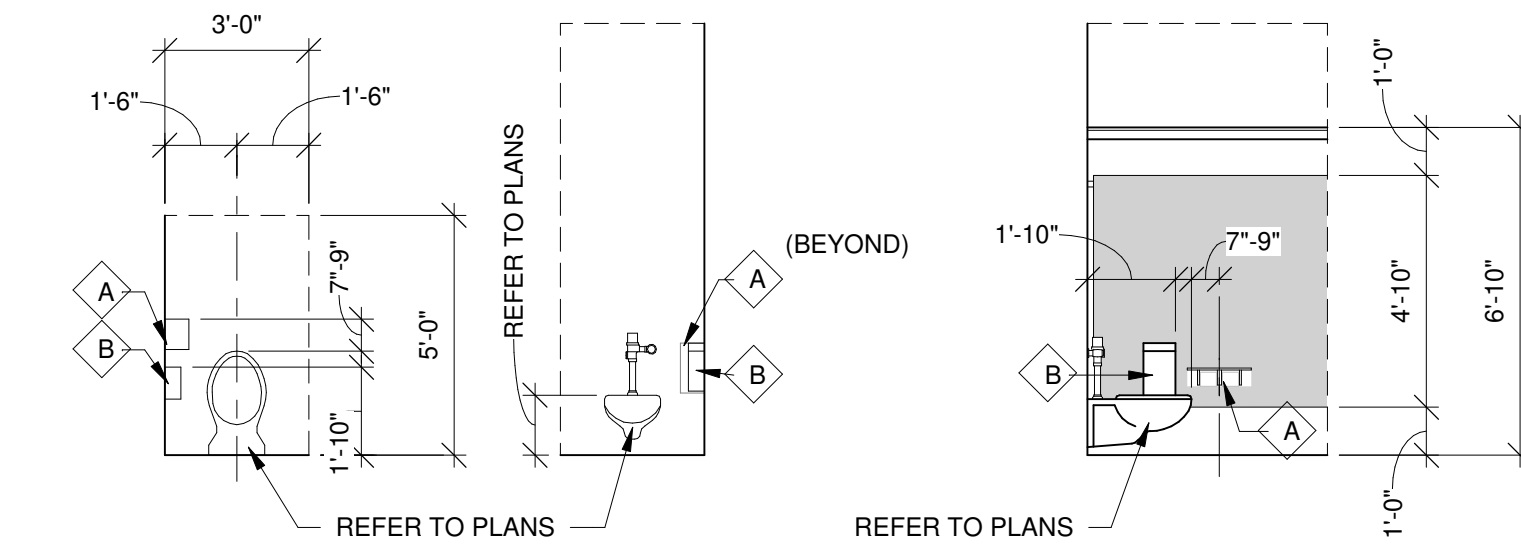


4 TYP. TOILET ACCESSORY ELEVATIONS
A-400 1/4" = 1'-0"

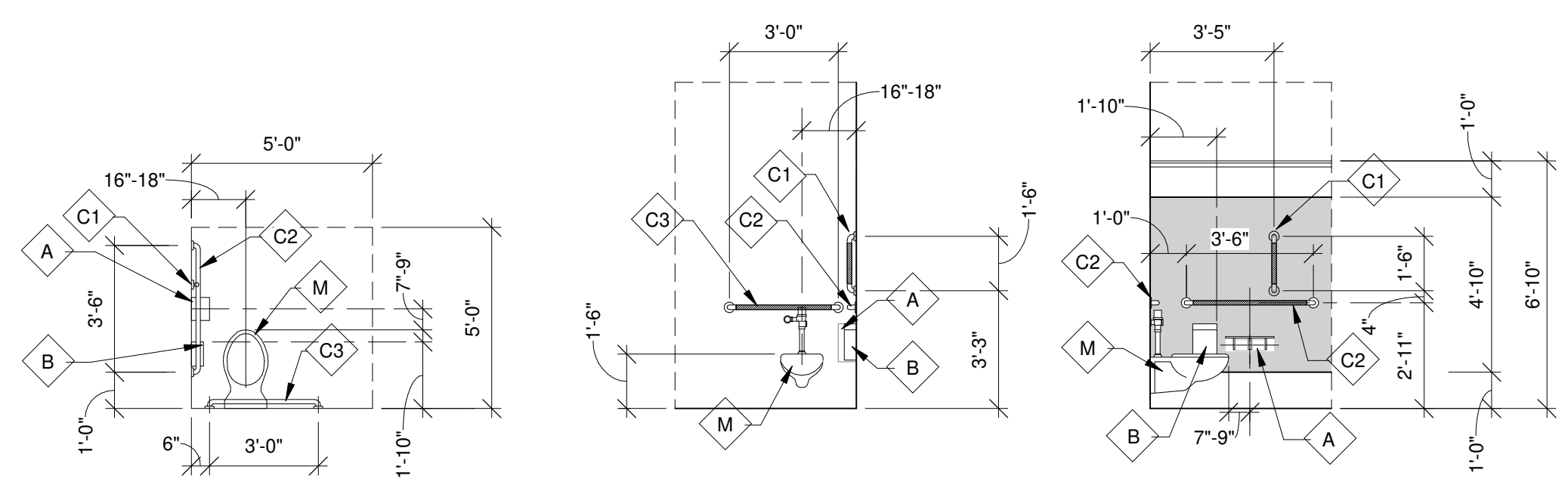
TOILET ACCESSORIES		BASIS OF DESIGN	APPROVED ALTERNATES
A	SURFACE MOUNTED TOILET PAPER DISPENSER	BY OWNER	
B	SURFACE MOUNTED SANITARY NAPKIN DISPOSAL	BOBRICK B-270	
C1	18" VERTICAL STAINLESS STEEL GRAB BAR	BOBRICK B-6806	
C2	48" HORIZONTAL STAINLESS STEEL GRAB BAR	BOBRICK B-6806	
C3	36" HORIZONTAL STAINLESS STEEL GRAB BAR	BOBRICK B-6806	
C4	30" HORIZONTAL STAINLESS STEEL GRAB BAR	BOBRICK B-6806	
C5	HORIZONTAL STAINLESS STEEL GRAB BAR - COMBO FOR ADA SHOWER	BOBRICK B-6861	
C6	24" HORIZONTAL STAINLESS STEEL GRAB BAR	BOBRICK B-6806	
D	SURFACE MOUNTED PAPER TOWEL DISPENSER	BY OWNER	
E	SEMI-RECESSED COMBO PAPER TOWEL DISPENSER AND WASTE RECEPTACLE	BOBRICKB-43944	
F	2'-0" WIDE BY 3'-0" TALL STAINLESS STEEL FRAMED WALL MOUNTED MIRROR @ 3'-4" A.F.F.	BOBRICK B-290	
G1 & G2	STAINLESS STEEL ROBE HOOK	BOBRICK B-671	
H	SEMI-RECESSED SANITARY NAPKIN DISPENSER	BOBRICK B-4706C	
I	SURFACE MOUNTED TOILET SOAP DISPENSER	BY OWNER	
K	CEILING ANCHORED SCRC (SOLID PHENOLIC) TOILET PARTITIONS (INCLUDING URINAL AND SINK SCREENS)	BOBRICK SIERRA SERIES (SCRC)1090	
L	SCRC (SOLID PHENOLIC) TOILET PARTITION DOOR	BOBRICK SIERRA SERIES (SCRC)1090	
M	WALL MOUNTED ADA WATER CLOSET	REFER TO PLBG DWGS	
N	WALL MOUNTED WATER CLOSET	REFER TO PLBG DWGS	
O	WALL MOUNTED HAND DRYER	XLERATOR XL-SB	SANIFLOW MACHFLOW M09ACS-UL
P	SURFACE MOUNTED BABY CHANGING STATION	BOBRICK KB-200-SS	
R	WALL MOUNTED SOLID COLOR REINFORCED COMPOSITE URINAL SCREEN	BOBRICK SIERRA SERIES 1090	
S1	WALL MOUNTED URINAL - ADA HEIGHT	REFER TO PLBG DWGS	
S2	WALL MOUNTED URINAL	REFER TO PLBG DWGS	
T	MOP HOLDER AND SHELF	BOBRICK B-239 X 34	
U	SURFACE MOUNTED ADULT CHANGING TABLE	KOALA KARE "KB3000-AHL"	SANIFLOW BABYMEDI CP0016HCS-ASTM



3 TYP. ACCESSIBLE SHOWER DETAILS
A-400 1/4" = 1'-0"



2 TYPICAL TOILET STALL
A-400 1/4" = 1'-0"



1 TYP. ADA ACCESSIBLE STALL
A-400 1/4" = 1'-0"



10 S Patterson Blvd
Dayton, OH 45402
T 937.224.4474

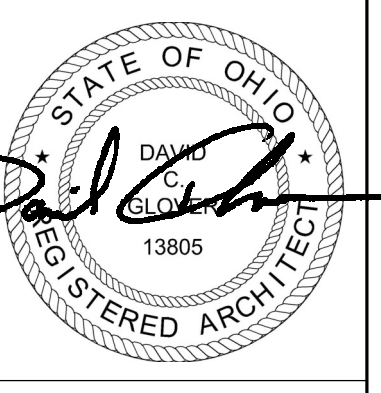


Sycamore Trails Aquatic Center
400 S. Heincke Road
Miamisburg, 45342

ISSUANCES

No.	Description	Date
0	Issued for Construction	01/17/25
1	ADDENDUM #01	01/31/25
2	ADDENDUM #02	02/12/25

Drawn By
CAS
Checked By
CAS
Client Number
948



Project Number
7383

DAVID C. GLOVER
LICENSE #13805
EXPIRATION DATE 12/31/2025

DRAWING TITLE
ENLARGED RESTROOM DETAILS AND EQUIPMENT LEGEND

SHEET NO.
A-400

ISSUED FOR CONSTRUCTION

2/10/2025 2:22:18 PM