



SYCAMORE TRAILS AQUATIC CENTER IMPROVEMENT PROJECT

ADDENDUM #2

FEBRUARY 12, 2025

Acknowledgement of Receipt to be Submitted with the Bid

Name: _____

Company Name: _____

ADDENDUM NO. 2

FEBRUARY 12, 2025

SYCAMORE TRAILS AQUATIC CENTER IMPROVEMENT PROJECT

CITY OF MIAMISBURG

Bids due – Wednesday, February 19, 2025 2:00 p.m.

To: ALL BIDDERS OF RECORD

This addendum No. 2 amends or modifies Drawings and Specifications, as prepared by: City of Miamisburg, 305 E. Central Ave., Miamisburg, OH 45342

Note: Bidder must acknowledge receipt of the Addendum in their bid proposal.

ITEM #1: Recycled Concrete

The City of Miamisburg is open to the utilization of RCA within the project scope, however there are a few stipulations. For bidding purposes, all bidders are asked to provide for the removal and disposal of concrete per the original spec (within line 6, item 202). If a bidder wishes to utilize RCA to reduce the volume of concrete haul-off, they may indicate as such in the Allowances section of the bid tab (section 800). If a bidder wishes to utilize RCA, they will be required to follow ODOT Spec [1117_12312012_for_2013.PDF](#). We will finalize a specification for the use of RCA specific to this project over the next few weeks; the basic approach from ODOT will be used for this project, should the bidder wish to utilize this method. For example: "Process the RCA on-site or at a nearby processing facility. In order to maintain consistent quality material, do not inter-mingle concrete from different concrete sources. Do not use non-project sources. Process the pavement to remove steel, joint sealant, soil and other contaminants from the concrete. Use necessary crushing, screening, washing and beneficiation methods to remove all fines and impurities and produce coarse aggregate with consistent quality and properties." In addition, the GC utilizing this method will be required to utilize a Geotech or testing agency on site and will be required to sign-off all on of this material prior to placement. Specific locations using the RCA will be required to be approved by Owner prior to placement.

ITEM #2: Allowances

An allowance has been created to allow bidders to identify elements, within the bid format, where allowances are warranted. Allowances are found in section 800 of the bid tab, and include the following optional items:

- RCA Concrete (see item #1 above)
- Provide a Time and Material (T&M) cost for repair/replace existing doors, frames and hardware. Owner may choose to review each door and frame on a case by case basis.
- Repair wet seals, caulking and flashing around existing windows, walls, doors, cupula clerestory windows if needed. Provide a T&M cost proposed as an allowance for this work. Owner may choose to review each area on a case by case basis.
- Mill, sweep and remove 1.5" of asphalt, replace final asphalt course and re-stripe

existing parking lot.

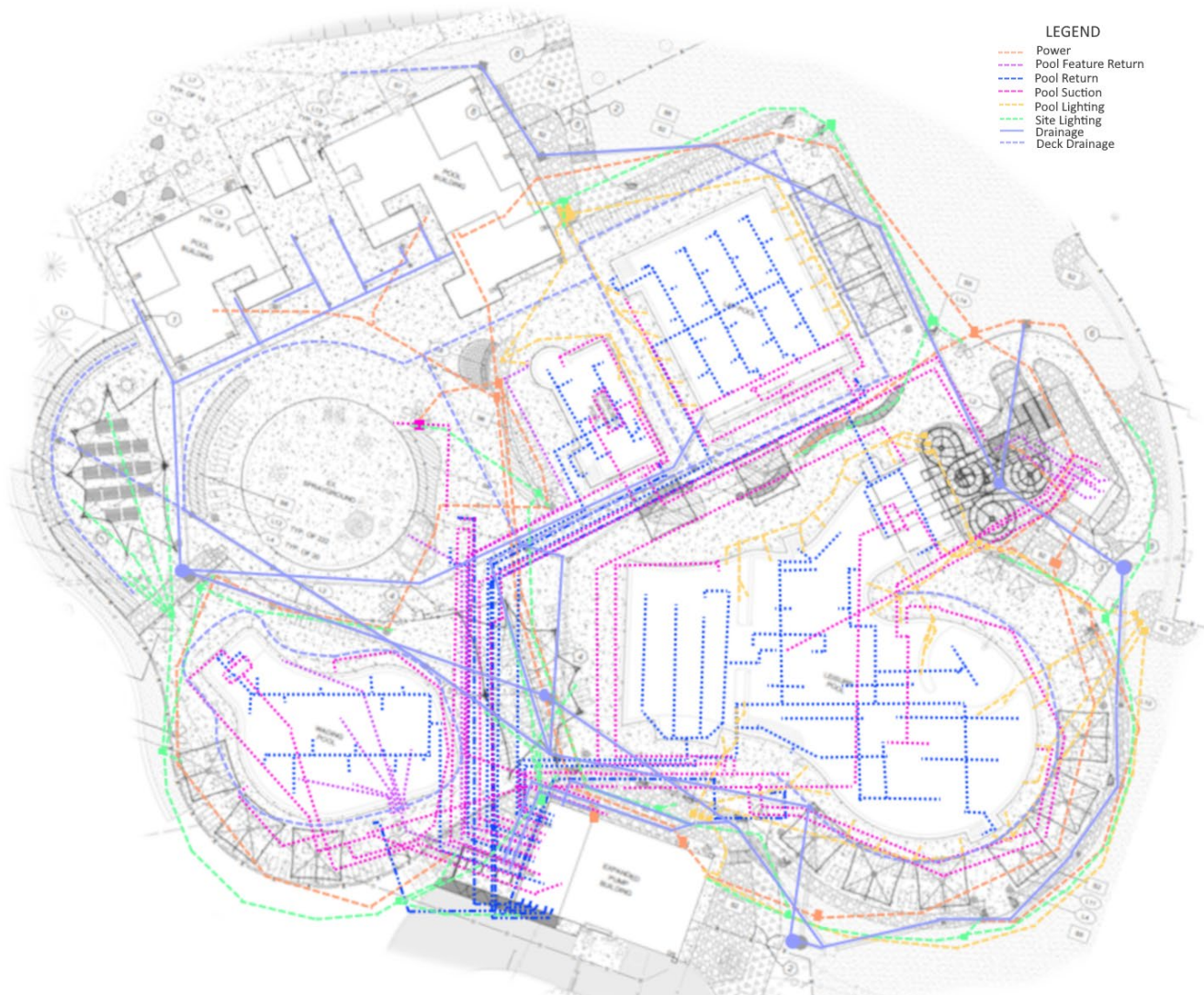
ITEM #3: Clarification on Bid Format

As a clarification to the bid format, items listed in section 400 (pool spaces) are itemized to understand lump sum costs for constructing these areas. The project is bid with the full intent of implementing all 6 areas that are itemized. The owner understands that based on the scope of each of these areas, overhead, mobilization, and a variety of other costs are spread amongst all six areas and should any of these six areas be non-performed, the delineation of these associated costs come out of balance. As a clarification, there is no intent to non-perform any one of these six areas, they are itemized in the bid as a method to be able to communicate the cost of the project to the public and understand the impact of the investment in the project.

Items in section 500 (Diving Board & Stand, Aqua Zip'n, Wading Pool Spray/Play Features and Pool Lift Chairs) are to be bid as City purchased equipment, installed by contractor. The bid should reflect the installation price for each unit or lump sum as identified.

ITEM #4: Plumbing, Utilities, and Pathways

In response to a request for issuance of a drawing overlaying the pool plumbing, site utilities, and conduit pathways on one drawing to help bidders better understand conflicts, coordination, phasing and mobilization, the Owner has created the following graphic. Means and methods are the responsibility of the awarded GC. Construction drawings show design intent only and not true availability of on-site pathways for the utilities. Per the drawings and specifications, it is the responsibility of the awarded GC to create the infrastructure overlay map as part of a discipline coordination process – this map is to be reviewed with all the affected sub-contractors, Owner, and Design Team in a master underground utility infrastructure coordination meeting prior to commencement of the new underground work. To be reviewed at this meeting include but not limited to the following items: Conflicts, Routing deviations from the design intent and possible solutions, Phasing of work. The graphic below is a visual representation of the potential pathways, but should be noted is preliminary and draft format, is not to scale, nor intended to be interpreted as anything other than for reference only.



ITEM #5: Project Drawings & Specifications

The following plan sheets and specifications have been revised to include corrections to certain finish and flooring aspects and/or drainage elements of the projects. Updated sheets are identified below. Addendum #2 Plan set is included as an attachment in the BidExpress platform.

- G002
- C130
- C131
- S400
- A400

Specifications

120113 – Toilet Compartments

102113.16 Plastic Laminate Clad Toilet Partitions has been removed

238128 – DX Mini Split Systems – Air Cooled

ITEM #6: Bid Date

No Change

END OF ADDENDUM #2