

March 21, 2024

Huber Heights New Public Works Facility

ADDENDUM #2

BIDS DUE: March 26, 2024 AT 1:00 Local Time at The City of Huber Heights locate at 6131 Taylorsville Rd, Huber Heights, Ohio 45424 at that time Bids will be opened publicly for consideration by the Owner.

To all Contract Bidders of record.

This Addendum is issued to modify, explain or correct the original Drawings and Specifications as noted below, and is hereby made a part of the Contract documents. Please attach this Addendum to the Specifications in your possession. Acknowledge receipt of this Addendum in the space provided on the Bid Form. Failure to do so may subject Bidder to disqualification.

This Addendum consists of (3) written pages and (1) Attachment.

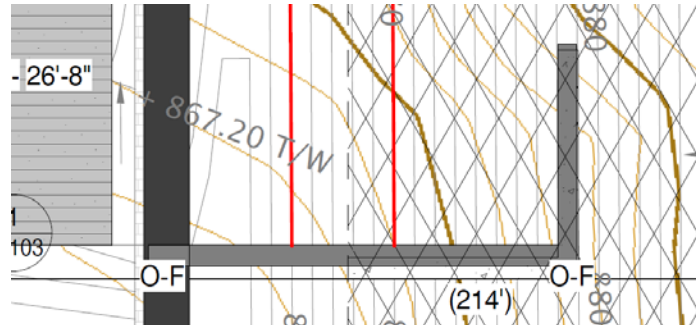
CLARIFICATIONS / GENERAL NOTES

1. To comply with the Indiana Brown Bat protection, the City will have all the exiting trees cut down before April 1. The contractor will be responsible for hauling and stump removal.

QUESTIONS AND ANSWERS

1. ***Concerning the notes for the Mosmatic components on drawing 1P500. In order to give you a solid bid and not be guessing on what is required. There are various types of overhead 360 degree SS swivel arms and various wand and guns. Also, there are various types of Undercarriage cleaner stationary units. One type is a ramp type that would mount on the concrete and the other type is poured into the floor. I have downloaded their catalog. Go to link below. Could you give us part numbers for the devices we need to include and install in our bid.***
 - a. Ceiling 360 degree boom
 - I. 360 degree smooth rotation with 4'-0" 4"x4"x1/4" SS vertical post with 3/8" plate receiver, through bolted to precast deck and boom receiver plate.
 - II. Rated to 4000 psi
 - III. Sealed bearing design
 - IV. Mosmatic DKP part No. 66.089
 - b. Undercarriage cleaner – Flush mounted with floor (2) units required
 - I. Model # 80.640
 - II. Provide pvc conduit sleeve for pipe install
 - III. Location will be 12'-0" off exterior wall and both units will be 24" apart centered.
 - c. Wands
 - I. Model 24.939

2. **What is this “L-shaped” light gray item shown intersecting the southern portion of the retaining wall? This only appears on the Architectural Site Plan, but not on the grading plan or utility plan. It appears to be called out as “O-F”**



- a. Disregard the light gray L shaped lines, they are prior proposed wall locations.
3. **Drawing 11T101 Detail 2 – Card Reader Detail states to provide long range card reader and intercom enclosure. Are we supposed to provide an intercom or just the enclosure for the intercom? If we are to provide an intercom could more specifications be given on to what is wanted? What are the intercoms communicating with back in the building? There is no master station for the intercoms to communicate with shown inside the building.**

- a. Intercom to be IA-1 - Aiphone Video Door Station, Vandal Resistant Surface Mount | AIP-JF-DV
- b. i. Unit should connect back to 129 and entry desk just in room 104.
- c. ii. a. The fixed camera provides clear video
- d. iii. b. LED illumination automatically turns on in low light conditions
- e. iv. c. LED-backlit nameplate
- f. v. d. 2 Years Warranty
- g. vi. e. Communication: Hands-free
- h. vii. f. Camera: Type: 1/4" CCD
- i. viii. g. Area View: 2'1" vertical x 3-1" horizontal at 20"
- j. ix. h. Protection Rating: IP43
- k. x. i. Temp. Rating: 14° ~ 140°F (-10°~60°C)
- l. xi. j. Material: Zinc die-cast
- m. xii. k. Wire Type: 2-cond., low cap, non-shielded - use Aiphone #871802
- n. xiii. l. Wire Distance: 165' (22AWG) 300' (18AWG) Fiber as required.
- o. xiv. m. Mounting: Surface mount directly to Reader Post.
4. **Keynote Legend #1 on drawing 11T201 states to run all data cable to room 113. The (3) cameras on the north side of the building and the (1) WAP in room 133 will all be over length if run to room 113. Could we run these cables to the wall rack in room 129 to keep them under length?**
- a. Yes, the lines can run back to 129 and then via fiber between wall rack in 129 to the rack in 133.
5. **Drawing 11T202 Detail 2 Typical TV Mounting states to provide data/HDMI/power in the wall box behind the display. How many data are needed in the box behind the display.**

- a. Yes, the lines can run back to 129 and then via fiber between wall rack in 129 to the rack in 133.
- 6. Specification 27 10 00 Part 2 states that all cabling and jacks shall be Cat 6. The technology drawings also state the same thing. In addendum 1 question 30 it states to provide Cat6A not Cat6. What category cabling is wanted for this project?**
- a. Per addendum #1 use CAT 6A.
- 7. Per 1A800 Detail 8, can Springs Window Fashion Crosshatch R300 be used in lieu of Sheerweave by Phifer?**
- a. Yes, as long as it meets or exceeds the specifications.
- 8. Per sheet 1MEP101 what is the scope of work for the flag pole lights?**
- a. The flag pole light is part of the flag pole specification and will be wired by the Ec contractor per note on 1MEP101.
- 9. Per sheet 1MEP101 there is a light and pole at the northwest side of the site just west of the fuel island, what type is this?**
- a. It's a P1.
- 10. Per sheet 1MEP101 The lights at the fuel island and salt structure are they part of the alternates?**
- a. Yes, the lights are part of the alternates. The lights at the fuel island are in addition to the lights that will be supplied by the fuel canopy supplier. These lights will be tied in with the site lights.
- 11. The current asphalt spec is 3.5" of Intermediate and 2.5" of surface. The max lift we can do in one pass is 3" for the intermediate and 2" for the surface. Is the intent to provide two (2) lifts of intermediate and two (2) lifts of surface to hit the specified thicknesses? The additional lift for each course of asphalt adds significant costs to the project.**
- a. If it requires multiple lifts to achieve the required thicknesses then additional lifts will be required.
- 12. Road mix it calls out 442 TYPE A, are you just looking for virgin aggregate? And do they have a liquid specification on this as well? Oftentimes they will spec 442 A with virgin material but keep a 64/22 liquid.**
- a. Yes, 442 A should be used.

REVISIONS TO THE DRAWINGS

- 1. Sheet – 1E601 – Fuel Island Panel and Lift power updated.



CONSULTANTS

REVISIONS

Table with 3 columns: REV, DESCRIPTION, DATE. Contains 3 revision entries.

SHEET

Panel Schedules

- 1. NEW PANEL: COPPER BUS BARS
2. FURNISH AND INSTALL NEW BREAKERS AS INDICATED
3. BOLT IN BREAKERS ONLY
4. PER NEC 430.24-6, 440.6
5. PER NEC TABLE 430-22A; 430-26; 620-13,14,15.

PANEL NOTES

12" = 1'-0"

WIRE SIZE SCHEDULE

WIRE SIZES FOR BRANCH CIRCUITS OF 100' LENGTH OR LESS SHALL BE:

- 20A BREAKER - #12 CU
25-35A - #10 CU
40-50A - #8 CU
55-65A - #6 CU
LARGER AS LISTED BY NEC, OR AS SHOWN BY RISER.

BRANCH CIRCUITS OF 101'-250' IN LENGTH SHALL USE ONE LARGER SIZE OF WIRE (IE A CIRCUIT 150' IN LENGTH WITH A 20A BREAKER SHALL USE #10).

BRANCH CIRCUITS GREATER THAN 250 SHALL USE WIRE TWO SIZES LARGER (IE A BRANCH CIRCUIT 275' IN LENGTH SHALL USE #8).

PANELBOARD: LPA. Location: vehicle parking 227. Includes notes, circuit schedule, and load classification table.

PANELBOARD: LPB. Location: vehicle parking 227. Includes notes, circuit schedule, and load classification table.

PANELBOARD: LPC. Location: vehicle parking 227. Includes notes, circuit schedule, and load classification table.

PANELBOARD: RPA. Location: vehicle parking 227. Includes notes, circuit schedule, and load classification table.

PANELBOARD: RPB. Location: vehicle parking 227. Includes notes, circuit schedule, and load classification table.

PANELBOARD: RPC. Location: vehicle parking 227. Includes notes, circuit schedule, and load classification table.

PANELBOARD: FUEL. Location: vehicle parking 227. Includes notes, circuit schedule, and load classification table.