

ADDENDUM NO. #2
December 4, 2025
Fire Station 15 Renovations
(10% MBE PARTICIPATION GOAL)

TO ALL BIDDERS:

This addendum, including all articles and corrections listed below, shall be taken into account in preparing the Bid.

ITEM NO. 1 Questions and Answers

1. **Question:** Looking over the bid documents, I am unable to locate any asbestos survey. Do you know if there will be an addendum to include a survey of the asbestos materials needed for removal prior to renovations?

Answer: *Pre-Renovation Asbestos Inspection* report is attached. Additionally, the *Pre-Renovation Preliminary Lead-Containing Paint Inspection* report is attached as well.

2. **Question:** Looking through the drawings and sheet F0.1 has a Fire Suppression piping table that says wet pipe sprinkler pipe 2" and smaller shall be threaded black steel. Can IGS pipe, which is a roll grooved product line that Victaulic pipe be used for the 2" or less pipe?

Answer: Add type S3 to the 2" and smaller, this means the contractor can use the joining method, but it must be schedule 40 piping. Schedule 10 rolled will still be only allowed in 2 ½" and larger piping.

3. **Question:** Do you have a Projected estimated cost for station 15

Answer: The City of Dayton does not publish estimates of cost.

4. **Question:** Is there a start date in mind for station 15?

Answer: The Start date is once the contract is executed and Notice to Proceed is issued.

5. **Question:** Will station 15 be closed during construction?

Answer: Yes. The current crew will relocated to another location during construction.

6. **Question:** Will there be a need for a job trailer for site meetings or can the existing building provide space for that need?

Answer: There is no need for job trailers as the existing building can be used for site meetings, restrooms, etc.

December 4, 2025
David Escobar
City Engineer, Public Works
Page 1

7. **Question:** The amount of demolition of duct work and then the new installation of the HVAC system in the Day room and kitchen areas above the ceiling. There won't be much of the support system nor drywall left as existing. Is there a possibility of installing all new ceiling grid and pads in these areas?

Answer: Yes, this acceptable.

8. **Question:** Sheet F2.1 shows details for the 1st, 2nd, and 3rd floor fire suppression in the stairwell. Is the intent to put sprinklers in the stairwell?

Answer: No.

9. **Question:** While on my site visit, I noticed that the flange from the existing riser shown on Sht F2.1 is over 5' off the apparatus bay floor. Which means the new fire protection backflow and valves will be 6'-8' off the floor. There also may be clearance issues with the existing OS&Y valve that is currently in place. We could loop the new backflow down, so they have better access, but we'd be close to the yellow line painted on the floor, which I assume is there for vehicle clearance. Please advise.

Answer: The City Water Department did not comment on the height of the backflow and valves when reviewing the service drawings. If the existing by-pass OS&Y valve becomes a clearance issue it will need to be moved further from the riser. The new backflow should be installed with valves perpendicular to the side wall.

10. **Question:** Just to clarify, the Decon room and Fitness room will not be sprinklered?

Answer: Correct.

11. **Question:** Do we need to be in the bar joist space in the apparatus bay?

Answer: No, but piping should be kept as high as possible.

ITEM NO. 2 Sign-In Sheet for Voluntary Site Visit is attached.



April 30, 2025

Mr. Curt Sparks, Associate AIA, LEED GA
App Architecture
615 Woodside Drive
Englewood, Ohio 45322

Telephone (937) 836-8898 ext. 110

**RE: Pre-Renovation Asbestos Inspection of Fire Station 15, 2801 Wayne Avenue,
Dayton, Ohio, March 11, 2025 AND April 1, 2025.
Helix Project No. 7347.**

Dear Mr. Sparks:

App Architecture contracted with Helix Environmental, Inc. to perform a pre-renovation asbestos inspection of the accessible portions of the Fire Station 15 located at 2801 Wayne Avenue, Dayton, Ohio. The inspection was necessary to determine if asbestos-containing building materials were present so that plans could be made to remove them in accordance with current regulatory requirements prior to a planned renovation project at the building. This letter report summarizes the results of the inspection performed on March 11, 2025 and April 1, 2025 and the analytical results of samples collected on those dates. A separate report has been submitted to document the Preliminary Lead-Containing Paint Inspection.

INSPECTION AND ANALYTICAL PROCEDURES

Mr. Ralph Froehlich, CIH, CSP, QEP and Mr. Benjamin Froehlich, IH with Helix Environmental, Inc. performed bulk sampling for asbestos in the accessible renovation areas at the Fire Station 15 building located on 2801 Wayne Avenue in Dayton, Ohio. On March 11, 2025 and April 1, 2025, Mr. R. Froehlich and Mr. B. Froehlich collected samples in the areas of the accessible building where the majority of work is to occur. Mr. Ralph A. Froehlich is a Certified Industrial Hygienist with more than thirty years experience in the fields of occupational and environmental health, and is certified by the Ohio Department of Health as an Asbestos Hazard Evaluation Specialist and Asbestos Abatement Project Designer (Certification Nos. ES3074 and PD60148, respectively). Mr. Benjamin Froehlich has over fifteen years experience in the fields of occupational and environmental health and is also certified by the Ohio Department of Health as an

Asbestos Hazard Evaluation Specialist and Asbestos Abatement Project Designer (Cert. Nos. ES34739 and PD60827, respectively).

Helix Environmental, Inc. collected thirty-seven (37) bulk samples of suspect asbestos-containing building materials in the renovation areas on March 11, 2025. Helix Environmental, Inc. collected an additional twenty-three (23) bulk samples of suspect asbestos-containing building materials in the renovation area on April 1, 2025.

Sampling locations were determined in a manner "sufficient to determine" whether miscellaneous and non-friable materials contain more than 1% asbestos if they were not assumed to contain asbestos. No thermal system insulation or surfacing materials were identified during the inspection. Bulk samples of the suspect materials were collected using cleaned hand tools and packaged in labeled zip-lock plastic bags. The sample bags were placed into a larger zip-lock bag, with the original sample data/chain-of-custody and analytical request forms. Helix Environmental, Inc. retained copies of these forms.

Bulk samples were shipped by overnight courier to SanAir Technologies Laboratory, Inc., a National Voluntary Laboratory Accreditation Program (NVLAP) and Ohio Certified Professional accredited environmental lead laboratory, where they were analyzed via Polarized Light Microscopy (PLM) with dispersion staining in accordance with the U.S. Environmental Protection Agency's Interim Methods for the Determination of Asbestos in Bulk Insulation Samples (EPA-600/R-93/116). Under this method, the limit of detection for asbestos is about 1 percent by area. Samples containing smaller concentrations of asbestos are not reliably detected by this technique. Polarized light microscopes equipped with 10X eyepieces, 10X and 40X objective lenses and dispersion staining lenses were used to identify fibers present in the samples. This method has a reporting limit of 1%. Several samples were reanalyzed using EPA PLM 400 Point Counting technique, this method has a reporting limit of 0.25%. Additional samples were reanalyzed using EPA PLM with gravimetric reduction. This method has a reporting limit of 0.1%.

SanAir Technologies Laboratory, Inc. maintains accreditation from the American Industrial Hygiene Association as an environmental microbiology laboratory and has received accreditation through successful participation in the NIST National Voluntary Laboratory Accreditation Program (NVLAP) for bulk asbestos and as an environmental lead laboratory. AIHA-accredited laboratories are scrutinized on a regular basis to ensure that personnel, equipment, facilities and data are maintained. In addition, AIHA-accredited laboratories have well-developed assurance/quality control programs

to ensure that analytical results accurately reflect conditions present during the sampling periods.

APPLICABLE STANDARDS

Asbestos

The U. S. Environmental Protection Agency (EPA) has established regulations that apply to friable and potentially friable materials with asbestos content in excess of one percent, as determined by PLM. These regulations establish required notification, removal techniques, and disposal of regulated asbestos-containing materials. "Friable" means that a suspect material can be reduced to a powder by hand pressure when dry and denotes a material that is capable of releasing significant amounts of asbestos fibers to the air. Potentially friable materials are those that may release asbestos fibers to the air if they are extensively damaged during demolition operations, and include Category I Nonfriable materials in poor condition and Category II Nonfriable materials. Category I Nonfriable materials include bituminous roofing materials, resilient flooring materials, and gaskets, where the asbestos is mixed in a resilient matrix. Category I Nonfriable materials may be left in buildings when they are demolished by conventional methods, if the materials are not in poor condition. The Ohio EPA has established equivalent regulations for Ohio (Ohio Administrative Code 3745-20).

U. S. EPA has also recently banned certain uses of asbestos, and requires exposure monitoring to determine whether potentially-exposed persons exceed an airborne "Existing Chemical Exposure Limit" (ECEL) of 0.005 fibers/cc. The requirement for exposure monitoring and provision of respirators for persons whose exposures exceed 0.005 fibers/cc is currently in effect (40 CFR 751 Subpart F).

The Occupational Safety and Health Administration (OSHA) has promulgated an eight-hour Time-Weighted Average (TWA) Permissible Exposure Limit of 0.1 fibers/cc for airborne asbestos exposures while working in and around asbestos-containing materials (29 CFR 1910.1001, 29 CFR 1926.1101). A 30-minute Excursion Limit of 1.0 fibers/cc is also included with the standards. Asbestos-containing materials are defined as those that contain more than 1% asbestos. These regulations include complex requirements for asbestos abatement, dividing the work with and around asbestos into four classes, with varying requirements for each class. OSHA also requires building and facility owners to maintain records of information concerning the presence, location and

quantity of asbestos-containing material (ACM) and presumed asbestos-containing material (PACM) installed in their building or facility (29 CFR 1910.1001(j)(2)(ii)).

The U.S. Environmental Protection Agency (EPA) has established clearance criteria of 0.01 fibers/cc by PCM analyses for small-scale asbestos abatement projects in schools (40 CFR 763.91). In addition, EPA has established clearance criteria of 70 asbestos structures/mm² by Transmission Electron Microscopy (TEM) analyses. However, this clearance criteria is only required for large asbestos abatement projects in schools.

The American Conference of Governmental Industrial Hygienists (ACGIH) recommends an airborne eight-hour TWA Threshold Limit Value of 0.1 fibers/cc (ACGIH 2024 *TLVs and BEIs*). ACGIH TLVs denote concentrations and conditions to which it is believed that nearly all workers may be repeatedly exposed day after day without adverse effect.

The National Institute for Occupational Safety and Health (NIOSH) identifies asbestos as an occupational carcinogen, and recommends that occupational exposures be “limited to the lowest feasible concentration” (NIOSH *Pocket Guide to Chemical Hazards*, 2007).

The Ohio Environmental Protection Agency (OEPA) has established additional regulations for asbestos abatement, including a certification program for asbestos supervisors, workers, hazard evaluation specialists, project designers, and air monitoring technicians. OEPA regulations also require contractors to be licensed, and require 10 working day advance notifications for asbestos abatement in amounts over 50 linear feet (LF) or 50 square feet (SF) of friable asbestos-containing material (Ohio Administrative Code 3745-20, 22).

ANALYTICAL RESULTS

TABLE 1: CONFIRMED AND ASSUMED ASBESTOS-CONTAINING MATERIALS AT FIRE STATION 15, 2801 WAYNE AVENUE, DAYTON, OHIO, COLLECTED MARCH 11, 2025 AND APRIL 1, 2025. HELIX PROJECT NO. 7347.

Helix Sample No. Lab Sample No.	Amount	Layer	Description/Sample Location	Friable or Non-Friable	PLM Result (% Asbestos)
7347-03-11-10 25016410-010 25017960-001	200 SF	1	Light Grey Insulation Sealant/ 1st Floor, West Vehicle Bay, Northwest Area, On Fiberglass Insulated Pipe, 5' Ht.	Non-Friable	2% Chrysotile Asbestos Detected; 1.1% Chrysotile Asbestos by Point Count with Gravimetric Reduction
7347-03-11-13 25016410-013	34 SF	1	Light Grey Insulation Sealant/ Basement, Central Tower, South Central Area, On Hot Water Storage Tank, East Side, Over Fiberglass Insulation, 4' Ht.	Non-Friable	10% Chrysotile Asbestos Detected
7347-03-11-25 25016410-025	-	1	Light Grey Insulation Sealant/ Basement, Central Tower, Southwest Area, On Hot Water Storage Tank, West End, Over Fiberglass Insulation, 4' Ht.	Non-Friable	10% Chrysotile Asbestos Detected
7347-03-11-14 25016410-014	80 SF	1	Light Grey Insulation Sealant/ 1st Floor, Central Tower, North Central Area, On Solar Hot Water Storage Tank, On Fiberglass Insulation Jacket, 1' Ht.	Non-Friable	10% Chrysotile Asbestos Detected
7347-03-11-26 25016410-026	-	1	Light Grey Insulation Sealant/ Basement, Central Tower, Northeast Area, In Pit, On Solar Hot Water Storage Tank, South Side, On Fiberglass Insulation Jacket, 2' Ht.	Non-Friable	10% Chrysotile Asbestos Detected

Ohio EPA REGULATED ASBESTOS-CONTAINING BUILDING MATERIAL
 US EPA REGULATED ASBESTOS-CONTAINING BUILDING MATERIAL
 OSHA REGULATED ASBESTOS-CONTAINING MATERIAL

>1% Asbestos
 >1% Asbestos
 >1% Asbestos

TABLE 1 (CONTINUED): CONFIRMED AND ASSUMED ASBESTOS-CONTAINING MATERIALS AT FIRE STATION 15, 2801 WAYNE AVENUE, DAYTON, OHIO, COLLECTED MARCH 11, 2025 AND APRIL 1, 2025. HELIX PROJECT NO. 7347.

Helix Sample No. Lab Sample No.	Amount	Layer	Description/Sample Location	Friable or Non-Friable	PLM Result (% Asbestos)
7347-03-11-11 25016410-011 25017960-002	680 SF	1	Tan Insulation Sealant/ 1st Floor, Central Tower, North Central Area, On Fiberglass Insulated Pipe, On West Side of Solar Hot Water Storage Tank, 0' Ht.	Non-Friable	2% Chrysotile Asbestos Detected; 2.7% Chrysotile Asbestos by Point Count with Gravimetric Reduction
7347-03-11-12 25016410-012 25017960-003	-	1	Tan Insulation Sealant/ Basement, Central Tower, South Central Area, On Fiberglass Pipe Insulation, 5' Ht.	Non-Friable	2% Chrysotile Asbestos Detected; 1.6% Chrysotile Asbestos by Point Count with Gravimetric Reduction
7347-03-11-15 25016410-015	-	1	Tan Insulation Sealant/ 2nd Floor, Central Tower, East Central Area, On Fiberglass Pipe Insulation, 4' Ht.	Non-Friable	No Asbestos Detected
7347-03-11-27 25016410-027	-	1	Tan Insulation Sealant/ Basement, Central Tower, Northeast Area, Pit, On South Side of Solar Hot Water Storage Tank, On Fiberglass Pipe Insulation, 3' Ht.	Non-Friable	No Asbestos Detected

Ohio EPA REGULATED ASBESTOS-CONTAINING BUILDING MATERIAL
US EPA REGULATED ASBESTOS-CONTAINING BUILDING MATERIAL
OSHA REGULATED ASBESTOS-CONTAINING MATERIAL

>1% Asbestos
>1% Asbestos
>1% Asbestos

TABLE 1 (CONTINUED): CONFIRMED AND ASSUMED ASBESTOS-CONTAINING MATERIALS AT FIRE STATION 15, 2801 WAYNE AVENUE, DAYTON, OHIO, COLLECTED MARCH 11, 2025 AND APRIL 1, 2025. HELIX PROJECT NO. 7347.

Helix Sample No. Lab Sample No.	Amount	Layer	Description/Sample Location	Friable or Non-Friable	PLM Result (% Asbestos)
7347-03-11-21 25016410-021 25017960-004	3100 SF	1	12" x 12" Light Grey Floor Tile with Black Horizontal Streaks, Floor Tile/ 1st Floor, Northeast Central Office - Bedroom, Southwest Central Area, 0' Ht.	Non-Friable	2% Chrysotile Asbestos Detected; 0.6% Chrysotile Asbestos by Point Count with Gravimetric Reduction
		2	12" x 12" Light Grey Floor Tile with Black Horizontal Streaks, Black Mastic/ 1st Floor, NE Central Office - Bedroom, SW Central Area, 0' Ht.	Non-Friable	No Asbestos Detected
7347-03-11-22 25016410-022 25017960-005	-	1	12" x 12" Light Grey Floor Tile with Black Horizontal Streaks, Floor Tile/ 1st Floor, Southeast Dormitory, Southeast Area (Exercise Area), 0' Ht.	Non-Friable	2% Chrysotile Asbestos Detected; 0.4% Chrysotile Asbestos by Point Count with Gravimetric Reduction
		2	12" x 12" Light Grey Floor Tile with Black Horizontal Streaks, Black Mastic/ 1st Floor, Southeast Dormitory, Southeast Area (Exercise Area), 0' Ht.	Non-Friable	No Asbestos Detected
7347-04-01-14 25021458-014	4 SF	1	Grey Pipe Penetration Caulk/ 2nd Floor, Central Tower, West Wall, North Central Area, 8' Ht.	Non-Friable	2% Chrysotile Asbestos Detected
7347-04-01-15 25021458-015	-	1	Grey Pipe Penetration Caulk/ 2nd Floor, Central Tower, West Wall, Central Area, 8' Ht.	Non-Friable	2% Chrysotile Asbestos Detected

Ohio EPA REGULATED ASBESTOS-CONTAINING BUILDING MATERIAL
US EPA REGULATED ASBESTOS-CONTAINING BUILDING MATERIAL
OSHA REGULATED ASBESTOS-CONTAINING MATERIAL

>1% Asbestos
>1% Asbestos
>1% Asbestos

TABLE 1 (CONTINUED): CONFIRMED AND ASSUMED ASBESTOS-CONTAINING MATERIALS AT FIRE STATION 15, 2801 WAYNE AVENUE, DAYTON, OHIO, COLLECTED MARCH 11, 2025 AND APRIL 1, 2025. HELIX PROJECT NO. 7347.

Helix Sample No. Lab Sample No.	Amount	Layer	Description/Sample Location	Friable or Non-Friable	PLM Result (% Asbestos)
ASSUMED Not Sampled	60 SF (3)	1	Fire Doors / 1st Floor, At Entrance from the West Vehicle Bay, Throughout	Friable	Assumed to Contain Asbestos
ASSUMED Not Sampled	12 SF (1)	1	Fire Doors / 2nd Floor, Central Tower, South Side, Roof Access Partial Door	Friable	Assumed to Contain Asbestos
ASSUMED Not Sampled	40 SF (2)	1	Fire Doors / 3rd Floor, Central Tower, Roof Access Door and Southwest Door to Hose Drainage Area	Friable	Assumed to Contain Asbestos
ASSUMED Not Sampled	16 SF (3)	1	Vibration Isolator Cloth / 1st Floor, West Vehicle Bay, Southeast Central Area, On Air Handler	Friable	Assumed to Contain Asbestos
ASSUMED Not Sampled	10 SF (2)	1	Vibration Isolator Cloth / 3rd Floor, Central Tower, East Central Area, On AHU 3	Friable	Assumed to Contain Asbestos
ASSUMED Not Sampled	80 SF	1	Boiler Exhaust Flue Insulation / 2nd Floor, Central Tower, North Central Area, On Boiler	Friable	Assumed to Contain Asbestos
ASSUMED Not Sampled	40 SF	1	Boiler Exhaust Flue Insulation / 3rd Floor, Central Tower, North Central Area, On Boiler	Friable	Assumed to Contain Asbestos
ASSUMED Not Sampled	14 SF		Electrical Insulators in Switch Gear / 1st Floor, Central Tower, East Wall,	Non-Friable	Assumed to Contain Asbestos

Ohio EPA REGULATED ASBESTOS-CONTAINING BUILDING MATERIAL
 US EPA REGULATED ASBESTOS-CONTAINING BUILDING MATERIAL
 OSHA REGULATED ASBESTOS-CONTAINING MATERIAL

>1% Asbestos
 >1% Asbestos
 >1% Asbestos

TABLE 1 (CONTINUED): CONFIRMED AND ASSUMED ASBESTOS-CONTAINING MATERIALS AT FIRE STATION 15, 2801 WAYNE AVENUE, DAYTON, OHIO, COLLECTED MARCH 11, 2025 AND APRIL 1, 2025. HELIX PROJECT NO. 7347.

Helix Sample No. Lab Sample No.	Amount	Layer	Description/Sample Location	Friable or Non-Friable	PLM Result (% Asbestos)
ASSUMED Not Sampled	2 SF (2)	1	Electrical Insulators in Circuit Breaker/ 1st Floor, Central Tower, East Wall, South Area, 3' Ht.	Non-Friable	Assumed to Contain Asbestos
ASSUMED Not Sampled	8 SF (4)	1	Electrical Insulators in Circuit Breakers/ 1st Floor, Central Tower, Southeast Central Area, On Floating Panel Wall, 3' Ht.	Non-Friable	Assumed to Contain Asbestos
ASSUMED Not Sampled	0.25 SF (1)		Electrical Insulators in Safety Switch/ Exterior, West Side, Central Area, 12' Ht.	Non-Friable	Assumed to Contain Asbestos
ASSUMED Not Sampled	0.25 SF (1)		Electrical Insulators in Safety Switch/ 1st Floor, West Vehicle Bay, East Wall, South Central Area, 5' Ht.	Non-Friable	Assumed to Contain Asbestos
ASSUMED Not Sampled	0.5 SF (1)		Electrical Insulators in Safety Switch/ 2nd Floor, Central Tower, Central Area, South Wall, 4' Ht.	Non-Friable	Assumed to Contain Asbestos
ASSUMED Not Sampled	1 SF (2)		Electrical Insulators in Safety Switch/ 2nd Floor, Central Tower, South Wall and East Wall, Southeast Area, 4' Ht.	Non-Friable	Assumed to Contain Asbestos
ASSUMED Not Sampled	0.5 SF (2)		Electrical Insulators in Safety Switch/ 2nd Floor, Rooftop, South Central Area, West Wall, 2' Ht.	Non-Friable	Assumed to Contain Asbestos
ASSUMED Not Sampled	0.5 SF (1)		Electrical Insulators in Safety Switch/ 3rd Floor, Central Tower, Central Area, South Wall, 4' Ht.	Non-Friable	Assumed to Contain Asbestos

Ohio EPA REGULATED ASBESTOS-CONTAINING BUILDING MATERIAL
 US EPA REGULATED ASBESTOS-CONTAINING BUILDING MATERIAL
 OSHA REGULATED ASBESTOS-CONTAINING MATERIAL

>1% Asbestos
 >1% Asbestos
 >1% Asbestos

TABLE 1 (CONTINUED): CONFIRMED AND ASSUMED ASBESTOS-CONTAINING MATERIALS AT FIRE STATION 15, 2801 WAYNE AVENUE, DAYTON, OHIO, COLLECTED MARCH 11, 2025 AND APRIL 1, 2025. HELIX PROJECT NO. 7347.

Helix Sample No. Lab Sample No.	Amount	Layer	Description/Sample Location	Friable or Non-Friable	PLM Result (% Asbestos)
ASSUMED Not Sampled	9500 SF	1	Bituminous Roofing/ Main Roofs on Building	Non-Friable	Category I Nonfriable Asbestos Material

Ohio EPA REGULATED ASBESTOS-CONTAINING BUILDING MATERIAL	>1% Asbestos
US EPA REGULATED ASBESTOS-CONTAINING BUILDING MATERIAL	>1% Asbestos
OSHA REGULATED ASBESTOS-CONTAINING MATERIAL	>1% Asbestos

TABLE 2: CONFIRMED NON ASBESTOS-CONTAINING MATERIALS AT FIRE STATION 15, 2801 WAYNE AVENUE, DAYTON, OHIO, COLLECTED MARCH 11, 2025 AND APRIL 1, 2025. HELIX PROJECT NO. 7347.

Helix Sample No. Lab Sample No.	Amount	Layer	Description/Sample Location	Friable or Non-Friable	PLM Result (% Asbestos)
7347-03-11-01 25016410-001	780 SF	1	2' x 2' Ceiling Tile, Random Holes and Gouges, Rosette / 1st Floor, Southeast Dormitory, Northwest Area, On Ceiling, 8' Ht.	Friable	No Asbestos Detected
7347-03-11-02 25016410-002	-	1	2' x 2' Ceiling Tile, Random Holes and Gouges, Rosette / 1st Floor, Southeast Dormitory, Southeast Central Area, On Ceiling, 8' Ht.	Friable	No Asbestos Detected
7347-03-11-03 25016410-003	380 SF	1	2' x 2' Ceiling Tile, Directional Fissures and Holes / 1st Floor, Southeast Central Women's Restroom, West Side, North Central Area, On Ceiling, 8' Ht.	Friable	No Asbestos Detected
7347-03-11-04 25016410-004	-	1	2' x 2' Ceiling Tile, Directional Fissures and Holes / 1st Floor, Break Room, Central Area, On Ceiling, 8' Ht.	Friable	No Asbestos Detected
7347-03-11-05 25016410-005	8 SF	1	2' x 2' Ceiling Tile, Random Short Fissures and Holes / 1st Floor, Break Room, Central Area, On Ceiling, 8' Ht.	Friable	No Asbestos Detected
7347-03-11-06 25016410-006	-	1	2' x 2' Ceiling Tile, Random Short Fissures and Holes / 1st Floor, Break Room, Central Area, On Ceiling, 8' Ht.	Friable	No Asbestos Detected
7347-03-11-07 25016410-007	-	1	2' x 2' Ceiling Tile, Random Short Fissures and Holes / 1st Floor, Break Room, South Central Area, On Ceiling, 8' Ht.	Friable	No Asbestos Detected

Ohio EPA REGULATED ASBESTOS-CONTAINING BUILDING MATERIAL
 US EPA REGULATED ASBESTOS-CONTAINING BUILDING MATERIAL
 OSHA REGULATED ASBESTOS-CONTAINING MATERIAL

>1% Asbestos
 >1% Asbestos
 >1% Asbestos

TABLE 2 (CONTINUED): CONFIRMED NON ASBESTOS-CONTAINING MATERIALS AT FIRE STATION 15, 2801 WAYNE AVENUE, DAYTON, OHIO, COLLECTED MARCH 11, 2025 AND APRIL 1, 2025. HELIX PROJECT NO. 7347.

Helix Sample No. Lab Sample No.	Amount	Layer	Description/Sample Location	Friable or Non-Friable	PLM Result (% Asbestos)
7347-03-11-16 25016410-016	5900 SF	1	Drywall, Drywall/ 1st Floor, Break Room, East Wall, Center, Above Ceiling Tile, On Soffit, 8' Ht.	Non-Friable	No Asbestos Detected
		2	Drywall, Joint Compound/ 1st Floor, Break Room, East Wall, Center, Above Ceiling Tile, On Soffit, 8' Ht.	Non-Friable	No Asbestos Detected
7347-03-11-17 25016410-017	-	1	Drywall, Drywall/ 1st Floor, South Central Laundry Room, Northwest Area, At Ceiling Hole, 8' Ht.	Non-Friable	No Asbestos Detected
		2	Drywall, Joint Compound/ 1st Floor, South Central Laundry Room, Northwest Area, At Ceiling Hole, 8' Ht.	Non-Friable	No Asbestos Detected
7347-03-11-23 25016410-023	-	1	Drywall, Drywall/ 1st Floor, Southeast Dormitory, Southeast Central Area, Above Ceiling Tile, On Soffit, 8.5' Ht.	Non-Friable	No Asbestos Detected
		2	Drywall, Joint Compound/ 1st Floor, Southeast Dormitory, Southeast Central Area, Above Ceiling Tile, On Soffit, 8.5' Ht.	Non-Friable	No Asbestos Detected
7347-03-11-24 25016410-024	-	1	Drywall, Drywall/ 1st Floor, Southeast Dormitory, Northwest Area, Above Ceiling Tile, On Soffit, 8.5' Ht.	Non-Friable	No Asbestos Detected
		2	Drywall, Joint Compound/ 1st Floor, Southeast Dormitory, Northwest Area, Above Ceiling Tile, On Soffit, 8.5' Ht.	Non-Friable	No Asbestos Detected

**Ohio EPA REGULATED ASBESTOS-CONTAINING BUILDING MATERIAL
 US EPA REGULATED ASBESTOS-CONTAINING BUILDING MATERIAL
 OSHA REGULATED ASBESTOS-CONTAINING MATERIAL**

**>1% Asbestos
 >1% Asbestos
 >1% Asbestos**

TABLE 2 (CONTINUED): CONFIRMED NON ASBESTOS-CONTAINING MATERIALS AT FIRE STATION 15, 2801 WAYNE AVENUE, DAYTON, OHIO, COLLECTED MARCH 11, 2025 AND APRIL 1, 2025. HELIX PROJECT NO. 7347.

Helix Sample No. Lab Sample No.	Amount	Layer	Description/Sample Location	Friable or Non-Friable	PLM Result (% Asbestos)
7347-03-11-18 25016410-018	590 SF + outside stucco	1	Stucco, White Rough Coat/ 1st Floor, Southeast Central Men's Restroom, North Central Shower Stall, South Area, East Central Area, On Ceiling, 8' Ht.	Non-Friable	No Asbestos Detected
		2	Stucco, Grey Base Coat/ 1st Floor, Southeast Central Men's Restroom, North Central Shower Stall, South Area, East Central Area, On Ceiling, 8' Ht.	Non-Friable	No Asbestos Detected
7347-03-11-19 25016410-019	-	1	Stucco, White Rough Coat/ 1st Floor, Southeast Central Women's Restroom, Shower Stall, South Area, West Area, On Ceiling, 8' Ht.	Non-Friable	No Asbestos Detected
		2	Stucco, Grey Base Coat/ 1st Floor, Southeast Central Women's Restroom, Shower Stall, South Area, West Area, On Ceiling, 8' Ht.	Non-Friable	No Asbestos Detected
7347-03-11-20 25016410-020		1	Stucco, White Rough Coat/ 1st Floor, Southeast Central Women's Restroom, West Side, At North Wall, Above Ceiling Tile, 8' Ht.	Non-Friable	No Asbestos Detected
7347-04-01-01 25021458-001	>2000 SF	1	White Coating on Concrete Block/ 1st Floor, Men's Locker Room, Restroom, North Wall, East Area, 0.5' Ht.	Non-Friable	No Asbestos Detected
7347-04-01-02 25021458-002	-	1	White Coating on Concrete Block/ 1st Floor, Men's Locker Room, West Shower, West Wall, Center, 0.5' Ht.	Non-Friable	No Asbestos Detected
7347-04-01-03 25021458-003	-	1	White Coating on Concrete Block/ 1st Floor, Men's Locker Room, Restroom, South Wall, East of door, 0.5' Ht.	Non-Friable	No Asbestos Detected

Ohio EPA REGULATED ASBESTOS-CONTAINING BUILDING MATERIAL
US EPA REGULATED ASBESTOS-CONTAINING BUILDING MATERIAL
OSHA REGULATED ASBESTOS-CONTAINING MATERIAL

>1% Asbestos
>1% Asbestos
>1% Asbestos

TABLE 2 (CONTINUED): CONFIRMED NON ASBESTOS-CONTAINING MATERIALS AT FIRE STATION 15, 2801 WAYNE AVENUE, DAYTON, OHIO, COLLECTED MARCH 11, 2025 AND APRIL 1, 2025. HELIX PROJECT NO. 7347.

Helix Sample No. Lab Sample No.	Amount	Layer	Description/Sample Location	Friable or Non-Friable	PLM Result (% Asbestos)
7347-04-01-04 25021458-004	80 SF	1	Tan Ceramic Baseboard Tile, Ceramic Tile/ 1st Floor, Men’s Locker Room, Restroom, North Wall, East Area, 0.5’ Ht.	Non-Friable	No Asbestos Detected
		2	Tan Ceramic Baseboard Tile, Tan Adhesive/ 1st Floor, Men’s Locker Room, Restroom, North Wall, East Area, 0.5’ Ht.	Non-Friable	No Asbestos Detected
		3	Tan Ceramic Baseboard Tile, Grey Grout/ 1st Floor, Men’s Locker Room, Restroom, N. Wall, E. Area, 0.5’ Ht.	Non-Friable	No Asbestos Detected
7347-04-01-05 25021458-005	-	1	Tan Ceramic Baseboard Tile, Ceramic Tile/ 1st Floor, Men’s Locker Room, West Shower, West Wall, Center, 0.5’ Ht.	Non-Friable	No Asbestos Detected
		2	Tan Ceramic Baseboard Tile, Tan Adhesive/ 1st Floor, Men’s Locker Room, W. Shower, W. Wall, 0.5’ Ht.	Non-Friable	No Asbestos Detected
		2	Tan Ceramic Baseboard Tile, Grey Grout/ 1st Floor, Men’s Locker Room, W. Shower, W. Wall, Center, 0.5’ Ht.	Non-Friable	No Asbestos Detected
7347-04-01-06 25021458-006	360 SF	1	Grey Ceramic Shower Tile, Ceramic Tile/ 1st Floor, Men’s Locker Room, West Shower, South Wall, At Damaged Edge, 7’ Ht.	Non-Friable	No Asbestos Detected
		2	Grey Ceramic Shower Tile, Tan Adhesive/ 1st Floor, Men’s Locker Room, W. Shower, S. Wall, At Damaged Edge, 7’ Ht.	Non-Friable	No Asbestos Detected
		3	Grey Ceramic Shower Tile, White Mortar/ 1st Floor, Men’s Locker Room, West Shower, South Wall, At Damaged Edge, 7’ Ht.	Non-Friable	No Asbestos Detected

Ohio EPA REGULATED ASBESTOS-CONTAINING BUILDING MATERIAL
 US EPA REGULATED ASBESTOS-CONTAINING BUILDING MATERIAL
 OSHA REGULATED ASBESTOS-CONTAINING MATERIAL

>1% Asbestos
 >1% Asbestos
 >1% Asbestos

TABLE 2 (CONTINUED): CONFIRMED NON ASBESTOS-CONTAINING MATERIALS AT FIRE STATION 15, 2801 WAYNE AVENUE, DAYTON, OHIO, COLLECTED MARCH 11, 2025 AND APRIL 1, 2025. HELIX PROJECT NO. 7347.

Helix Sample No. Lab Sample No.	Amount	Layer	Description/Sample Location	Friable or Non-Friable	PLM Result (% Asbestos)
7347-04-01-07 25021458-007	360 SF	1	Grey Ceramic Shower Tile, Ceramic Tile/ 1st Floor, Women’s Restroom, Shower, South Wall, At Edge, 5’ Ht.	Non-Friable	No Asbestos Detected
		2	Grey Ceramic Shower Tile, Tan Adhesive/ 1st Floor, Women’s Restroom, Shower, South Wall, At Edge, 5’ Ht.	Non-Friable	No Asbestos Detected
		3	Grey Ceramic Shower Tile, White Mortar/ 1st Floor, Women’s Restroom, Shower, South Wall, At Edge, 5’ Ht.	Non-Friable	No Asbestos Detected
7347-04-01-08 25021458-008	600 SF	1	Tan Ceramic Floor Tile, Ceramic Tile/ 1st Floor, Men’s Locker Room, Northwest Area, At Entrance, 0’ Ht.	Non-Friable	No Asbestos Detected
		2	Tan Ceramic Floor Tile, Tan Adhesive/ 1st Floor, Men’s Locker Room, Northwest Area, At Entrance, 0’ Ht.	Non-Friable	No Asbestos Detected
		3	Tan Ceramic Floor Tile, Grey Mortar/ 1st Floor, Men’s Locker Room, Northwest Area, At Entrance, 0’ Ht.	Non-Friable	No Asbestos Detected
7347-04-01-09 25021458-009	-	1	Tan Ceramic Floor Tile, Ceramic Tile/ 1st Floor, Locker Room Entrance Area, Southeast Corner, 0’ Ht.	Non-Friable	No Asbestos Detected
		2	Tan Ceramic Floor Tile, Tan Adhesive/ 1st Floor, Locker Room Entrance Area, SE Corner, 0’ Ht.	Non-Friable	No Asbestos Detected
		3	Tan Ceramic Floor Tile, Grey Mortar/ 1st Floor, Locker Room Entrance Area, SE Corner, 0’ Ht.	Non-Friable	No Asbestos Detected

Ohio EPA REGULATED ASBESTOS-CONTAINING BUILDING MATERIAL
 US EPA REGULATED ASBESTOS-CONTAINING BUILDING MATERIAL
 OSHA REGULATED ASBESTOS-CONTAINING MATERIAL

>1% Asbestos
 >1% Asbestos
 >1% Asbestos

TABLE 2 (CONTINUED): CONFIRMED NON ASBESTOS-CONTAINING MATERIALS AT FIRE STATION 15, 2801 WAYNE AVENUE, DAYTON, OHIO, COLLECTED MARCH 11, 2025 AND APRIL 1, 2025. HELIX PROJECT NO. 7347.

Helix Sample No. Lab Sample No.	Amount	Layer	Description/Sample Location	Friable or Non-Friable	PLM Result (% Asbestos)
7347-03-11-08 25016410-008	1800 SF	1	Dark Brown Faux Wood Sheet Flooring, Flooring/ 1st Floor, Break Room, Northwest Area, At North Wall, 0' Ht.	Non-Friable	No Asbestos Detected
		2	Dark Brown Faux Wood Sheet Flooring, Green Mastic/ 1st Floor, Break Room, Northwest Area, At North Wall, 0' Ht.	Non-Friable	No Asbestos Detected
7347-03-11-09 25016410-009	-	1	Dark Brown Faux Wood Sheet Flooring, Flooring/ 1st Floor, Southwest Central Hallway, Northwest Area, 0' Ht.	Non-Friable	No Asbestos Detected
		2	Dark Brown Faux Wood Sheet Flooring, Green Mastic/ 1st Floor, Southwest Central Hallway, Northwest Area, 0' Ht.	Non-Friable	No Asbestos Detected
7347-03-11-32 25016410-032	30 SF	1	4" Brown Cove Base, Cove Base/ 1st Floor, South Central Laundry Room, West Wall, South Area, 0' Ht.	Non-Friable	No Asbestos Detected
		2	4" Brown Cove Base, Brown Mastic/ 1st Floor, South Central Laundry Room, West Wall, South Area, 0' Ht.	Non-Friable	No Asbestos Detected
7347-03-11-33 25016410-033	-	1	4" Brown Cove Base, Brown Mastic/ 1st Floor, South Central Laundry Room, West Wall, South Area, 0' Ht.	Non-Friable	No Asbestos Detected
7347-03-11-34 25016410-034	-	1	4" Brown Cove Base, Brown Mastic/ 1st Floor, South Central Laundry Room, West Wall, South Area, 0' Ht.	Non-Friable	No Asbestos Detected

Ohio EPA REGULATED ASBESTOS-CONTAINING BUILDING MATERIAL
 US EPA REGULATED ASBESTOS-CONTAINING BUILDING MATERIAL
 OSHA REGULATED ASBESTOS-CONTAINING MATERIAL

>1% Asbestos
 >1% Asbestos
 >1% Asbestos

TABLE 2 (CONTINUED): CONFIRMED NON ASBESTOS-CONTAINING MATERIALS AT FIRE STATION 15, 2801 WAYNE AVENUE, DAYTON, OHIO, COLLECTED MARCH 11, 2025 AND APRIL 1, 2025. HELIX PROJECT NO. 7347.

Helix Sample No. Lab Sample No.	Amount	Layer	Description/Sample Location	Friable or Non-Friable	PLM Result (% Asbestos)
7347-03-11-37 25016410-037	30 SF	1	4" Brown Cove Base, Cove Base/ 1st Floor, North Central Office, West Wall, Southwest Corner, 0' Ht.	Non-Friable	No Asbestos Detected
		2	4" Brown Cove Base, Brown Mastic/ 1st Floor, North Central Office, West Wall, Southwest Corner, 0' Ht.	Non-Friable	No Asbestos Detected
7347-03-11-35 25016410-035	110 SF	1	6" Black Cove Base, Cove Base/ 1st Floor, Southeast Central Hallway, East Wall, South Central Area, 0' Ht.	Non-Friable	No Asbestos Detected
		2	6" Black Cove Base, Tan Mastic/ 1st Floor, Southeast Central Hallway, East Wall, South Central Area, 0' Ht.	Non-Friable	No Asbestos Detected
7347-03-11-36 25016410-036	-	1	6" Black Cove Base, Cove Base/ 1st Floor, Break Room, West Wall, North Area, 0' Ht.	Non-Friable	No Asbestos Detected
		2	6" Black Cove Base, Tan Mastic/ 1st Floor, Break Room, West Wall, North Area, 0' Ht.	Non-Friable	No Asbestos Detected

Ohio EPA REGULATED ASBESTOS-CONTAINING BUILDING MATERIAL
US EPA REGULATED ASBESTOS-CONTAINING BUILDING MATERIAL
OSHA REGULATED ASBESTOS-CONTAINING MATERIAL

>1% Asbestos
>1% Asbestos
>1% Asbestos

TABLE 2 (CONTINUED): CONFIRMED NON ASBESTOS-CONTAINING MATERIALS AT FIRE STATION 15, 2801 WAYNE AVENUE, DAYTON, OHIO, COLLECTED MARCH 11, 2025 AND APRIL 1, 2025. HELIX PROJECT NO. 7347.

Helix Sample No. Lab Sample No.	Amount	Layer	Description/Sample Location	Friable or Non-Friable	PLM Result (% Asbestos)
7347-03-11-28 25016410-028	7 SF (2)	1	Tan Vibration Isolator Cloth/ 2nd Floor, Central Tower, Northeast Central Area, On AH-2, On Ductwork, Northwest Corner, 5' Ht.	Friable	No Asbestos Detected
7347-03-11-29 25016410-029	-	1	Tan Vibration Isolator Cloth/ 2nd Floor, Central Tower, Southeast Area, On AH-2, On Ductwork, 2.5' Ht.	Friable	No Asbestos Detected
7347-03-11-30 25016410-030	2 SF	1	Black Sweatwrap/ 2nd Floor, Central Tower, Central Area, On AH-2, West Side, On Pipe, 2' Ht.	Non-Friable	No Asbestos Detected
7347-03-11-31 25016410-031	-	1	Black Sweatwrap/ 2nd Floor, Central Tower, Central Area, On AH-2, West Side, On Pipe, 1' Ht.	Non-Friable	No Asbestos Detected
7347-04-01-10 25021458-010	65 SF	1	Black Sink Soundproofing/ 1st Floor, Kitchen, South Central Area, Under Sink, East Side, 2' Ht.	Non-Friable	No Asbestos Detected
7347-04-01-11 25021458-011	-	1	Black Sink Soundproofing/ 1st Floor, Kitchen, South Central Area, Under Sink, West Side, 2' Ht.	Non-Friable	No Asbestos Detected
7347-04-01-16 25021458-016	6 SF	1	Pipe Penetration Mortar/ Basement, Central Tower, West Wall, South Central Area, 8' Ht.	Non-Friable	No Asbestos Detected
7347-04-01-17 25021458-017	-	1	Pipe Penetration Mortar/ Basement, Central Tower, South Wall, East Area, 8' Ht.	Non-Friable	No Asbestos Detected

Ohio EPA REGULATED ASBESTOS-CONTAINING BUILDING MATERIAL
 US EPA REGULATED ASBESTOS-CONTAINING BUILDING MATERIAL
 OSHA REGULATED ASBESTOS-CONTAINING MATERIAL

>1% Asbestos
 >1% Asbestos
 >1% Asbestos

TABLE 2 (CONTINUED): CONFIRMED NON ASBESTOS-CONTAINING MATERIALS AT FIRE STATION 15, 2801 WAYNE AVENUE, DAYTON, OHIO, COLLECTED MARCH 11, 2025 AND APRIL 1, 2025. HELIX PROJECT NO. 7347.

Helix Sample No. Lab Sample No.	Amount	Layer	Description/Sample Location	Friable or Non-Friable	PLM Result (% Asbestos)
7347-04-01-12 25021458-012	35 SF	1	Brown Interior Caulk/ 1st Floor, East Central Entrance Door Frame, South Side, 4' Ht.	Non-Friable	No Asbestos Detected
7347-04-01-13 25021458-013	-	1	Brown Interior Caulk/ 1st Floor, Northeast Central Entrance Door Frame, East Side, 43' Ht.	Non-Friable	No Asbestos Detected
7347-04-01-18 25021458-018	80 SF	1	Grey Exterior Caulk/ Exterior, 2nd Floor Level, East Roof, Central Area, At Tower, North Side, East Central Area, 4' Ht.	Non-Friable	No Asbestos Detected
7347-04-01-19 25021458-019	-	1	Grey Exterior Caulk/ Exterior, 3rd Floor Level, East Roof, Central Area, At Tower, North Side, Central Area, 4' Ht.	Non-Friable	No Asbestos Detected
7347-04-01-21 25021458-021	-	1	Grey Exterior Caulk/ Exterior, South Side, East Dormitory Area, South Window Frame, East Edge, 7' Ht.	Non-Friable	No Asbestos Detected
7347-04-01-22 25021458-022	-	1	Grey Exterior Caulk/ Exterior, South Side, East Dormitory Area, South Window Frame, West Edge, 7' Ht.	Non-Friable	No Asbestos Detected
7347-04-01-20 25021458-020	8 SF	1	Black Exterior Caulk/ Exterior, East Side, North Central Area, Dining Room Windows, South Edge, 5' Ht.	Non-Friable	No Asbestos Detected
7347-04-01-23 25021458-023	-	1	Black Exterior Caulk/ Exterior, East Side, North Central Area, Dining Room Windows, South Edge, 4' Ht.	Non-Friable	No Asbestos Detected

Ohio EPA REGULATED ASBESTOS-CONTAINING BUILDING MATERIAL
 US EPA REGULATED ASBESTOS-CONTAINING BUILDING MATERIAL
 OSHA REGULATED ASBESTOS-CONTAINING MATERIAL

>1% Asbestos
 >1% Asbestos
 >1% Asbestos

DISCUSSION AND RECOMMENDATIONS

A total of sixty (60) total bulk samples of suspect asbestos-containing materials, some containing multiple layers, were collected from the Fire Station 15 Building located at 2801 Wayne Avenue renovation areas. Samples were collected from all accessible suspect asbestos-containing building materials in the accessible renovation areas with the exception of roofing materials, fire doors, window sills, ceramic tile adhesive, boilers which were in use and energized electrical insulation materials.

Analytical results confirmed that the following suspect asbestos-containing building materials at Fire Station 15, 2801 Wayne Avenue in Dayton, Ohio contain or were assumed to contain more than 1% asbestos:

- Grey Insulation Sealant, Throughout Building, From the Basement to the 2nd Floor, On Some Pipe Fittings (200 SF)
- Grey Insulation Sealant, Basement, On Abandoned Hot Water Storage Tank (34 SF)
- Grey Insulation Sealant, Basement to 1st Floor, On Abandoned Solar Hot Water Storage Tank (80 SF)
- Tan Insulation Sealant, Throughout Building, From the Basement to the 2nd Floor, On Both Hot Water Storage Tanks, And on Some Pipe Fittings (680 SF)
- Pipe Penetration Caulk, Basement, Throughout, At Pipe and Duct Penetrations (8 SF)
- Vibration Isolator Clothes, Roof, In All Large Air Handlers (26 SF Total, Not Sampled, Assumed to Contain Asbestos)
- Fire Doors, Throughout All Levels (112 SF, 6 Not Sampled, Assumed to Contain Asbestos)
- Boiler Exhaust Flues, 2nd Floor and 3rd Floor, Central Tower, North Area, Extending into the Top of the Central Tower Roof, (120 SF Total, Not Sampled, Assumed to Contain Asbestos)
- Electrical Insulators, Throughout, All Electrical Insulators within Switch Gears, Circuit Breakers and Safety Switches (27 SF Total, Not Sampled, Assumed to Contain Asbestos)
- Bituminous Roofing, All Roofing on Building (9500 SF Total, Not Sampled, Assumed to Contain Asbestos)

One type of sampled floor tile was reported to contain 2% asbestos by PLM visual area estimation, but were reported to contain less than 1% by PLM 400 Point Count with Gravimetric Reduction analytical methods:

- 12" x 12" Light Grey Floor Tile with Black Streaks, 1st Floor, Throughout, Including under the Ceramic Tile in the NE Bathroom and under the Brown Faux Wood Sheet Flooring (3100 SF, Less than 1% Asbestos with Gravimetric Reduction and Point Counting)

OSHA has interpreted its regulations to require wet methods for the removal of materials containing less than 1% asbestos, with prompt cleanup of debris in leak tight containers. Helix Environmental, Inc. recommends the use of a licensed asbestos abatement company to perform this work since they have the equipment, experience, and knowledge to safely remove materials containing trace amounts of asbestos without creating a potential hazard.

Additional sampled suspect materials were reported contain no detectable asbestos. No special asbestos requirements are necessary for their removal and disposal of sampled suspect materials which were found to contain no detectable asbestos.

Current Federal and State regulations require special asbestos abatement procedures prior to building demolition that will disturb confirmed or assumed friable or potentially-friable asbestos-containing materials. Helix Environmental, Inc. recommends that the identified asbestos-containing materials be removed using a licensed asbestos abatement contractor. Helix Environmental, Inc. also strongly recommends that the abatement work be competitively bid using specifications developed by a licensed Asbestos Project Designer to ensure that the regulatory requirements are met by the contractor and that the work is properly documented in the event of future legal action.

Trained workers and supervisors certified by OEPA must be used to remove the identified asbestos-containing building materials using special procedures and protective equipment to ensure that the workers are not overexposed to airborne asbestos. Advance notification may need to be provided to both the Regional Air Pollution Control Agency (RAPCA) and OEPA at least ten working days in advance of the start of abatement on site, depending on the quantity of materials removed. The fact that asbestos-containing materials were observed in or on the building should be noted on the demolition notification form along with the name and certification number of the

inspectors (Mr. Benjamin Froehlich, Ohio Certification Cert. No. ES34739). In addition, approximately 4,000 SF of bituminous roofing materials on the Main Building and 800 SF of bituminous roofing materials on the East Addition were also observed by the inspectors, and were Category I Non-Friable materials. Under current EPA regulations, Category I Non-Friable materials, including bituminous roofing materials, resilient flooring material, and non-friable gaskets, do not need to be removed from buildings prior to their demolition. The quantities of these Category I Non-Friable materials must be noted on the demolition/renovation notification form which must be sent to the Ohio EPA at least 10-working days prior to the start of demolition or asbestos abatement.

Additional suspect asbestos-containing materials may be hidden in uninspected or inaccessible locations, such as pipe chases, duct chases or wall cavities. If any additional suspect materials are encountered in these locations, they should be kept intact and undisturbed until they can be inspected and sampled by a licensed Asbestos Hazard Evaluation Specialist. Helix Environmental, Inc. will also be happy to return to the site if additional suspect materials are encountered during the renovation.

Since the building was built prior to 1978 when lead was banned for interior coatings, it was assumed that all paint present in the renovation area contains detectable levels of lead. Demolition contractors which will disturb assumed lead-containing painted surfaces must comply with the requirements of the OSHA Construction Industry Lead regulations prior to and during any work which may disturb lead-containing coatings. A separate report was submitted to document the results of a Preliminary Lead-Containing Paint inspection in the building.

Other potential environmental issues may also be present in the renovation area, including mercury-containing materials, suspect PCB-containing fluorescent light ballasts, and Freon®-containing refrigerants.

Mercury-containing fluorescent light bulbs in the building have sufficient concentrations of mercury to be considered universal hazardous waste. In addition, thermostats in the buildings may contain small amounts of mercury, and one mercury-containing thermostat was observed during inspection. Batteries associated with emergency lighting may also contain mercury, and are considered to be universal hazardous waste. These universal waste materials should be carefully removed from the building and recycled in accordance with current regulations.

Fluorescent light ballasts were made with PCBs until 1979. Ballasts made after that date are required to be marked with the legend "No PCBs". Given the age of the building, PCB-containing fluorescent light ballasts and other PCB-containing electrical capacitors and transformers may be present in the building, and each ballast, capacitor or transformer should be examined to determine if it is labeled "No PCBs". If necessary, ballasts, capacitors and transformers that are not so labeled should be carefully removed from the building and packaged and labeled for recycling or incineration in accordance with current regulations.

Refrigerated cooling systems in the buildings, including water coolers, window air-conditioners, and refrigerators, typically contain Freon® refrigerants that must be recovered by licensed refrigerant recycler if removed, in accordance with current regulations. No unauthorized venting of Freon® refrigerants to the atmosphere is permitted under current regulations, since these materials deplete the stratospheric ozone layer (Ozone Depleting Substances).

Finally, no significant accumulations of hazardous waste were observed during the building inspection that could require special remediation, although small amounts of maintenance and custodial chemicals including interior paint were observed in or near the renovation area. It was assumed that the remaining maintenance and custodial chemicals present in the renovation area will be relocated for use during normal custodial and maintenance operations. If not, then these materials may need to be labeled, packaged and transported to a licensed hazardous waste Treatment, Storage and Disposal site in compliance with federal and state hazardous waste regulations.

The results of this inspection can only reflect the condition of the property at the date and time of the site visit within the limits of the proposed work. There are limitations to asbestos inspections without dismantling or destroying the building or its systems. No inspection was performed in inaccessible locations. Recommendations are based on the professional judgment of the inspectors, and the results of the samples collected and analyzed. Helix Environmental, Inc. and its agents are neither responsible nor liable for the non-discovery of any defects in materials, craftsmanship, or other conditions, or any problems that may be discovered or manifest after the site visit date and time. Helix Environmental, Inc. and its agents make no warranty, expressed or implied, and accept no liability for the presence absence of asbestos or other hazardous materials in or on building products, materials, or areas. Helix Environmental, Inc. and its agents assume no responsibility

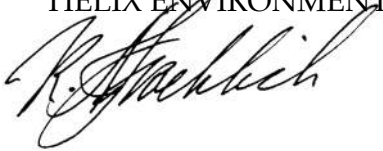
Mr. Curt Sparks, Associate AIA, LEED GA
April 30, 2025
Page 24

for the cost of repairing, replacing, or removing any undiscovered or unreported condition or defect, or any future condition or defect.

If you have any questions or comments concerning the inspection or analytical results, please call me at (937) 226-0650.

Sincerely,

HELIX ENVIRONMENTAL, INC.

A handwritten signature in black ink, appearing to read 'R. Froehlich', written over the company name.

Ralph A. Froehlich, CIH, CSP, QEP
President
Attach.

Mr. Curt Sparks, Associate AIA, LEED GA
April 30, 2025
Page 25

ATTACHMENTS

- **ANALYTICAL RESULTS AND SAMPLE DATA SHEETS**
- **SAMPLE LOCATIONS**
- **PHOTOGRAPHS**



Analysis Report
prepared for
Helix Environmental Inc

Report Date: 3/13/2025

Project Name: Fire Station 15, 2801 Wayne Avenue

Project #: 7347

SanAir ID#: 25016410



NVLAP LAB CODE 200870-0

10501 Trade Court, North Chesterfield, Virginia 23236
888.895.1177 | 804.897.1177 | fax: 804.897.0070 | LabReports@SanAir.com | SanAir.com



SanAir ID Number

25016410

FINAL REPORT

3/13/2025 10:30:24 AM

Name: Helix Environmental Inc
Address: 1 Elizabeth Place
Suite 160
Dayton, OH 45417
Phone: 937-226-0650

Project Number: 7347
P.O. Number:
Project Name: Fire Station 15, 2801 Wayne Avenue
Collected Date: 3/11/2025
Received Date: 3/12/2025 10:25:00 AM

Dear Benjamin Froehlich,

We at SanAir would like to thank you for the work you recently submitted. The 37 sample(s) were received on Wednesday, March 12, 2025 via UPS. The final report(s) is enclosed for the following sample(s): 7347-03-11-01, 7347-03-11-02, 7347-03-11-03, 7347-03-11-04, 7347-03-11-05, 7347-03-11-06, 7347-03-11-07, 7347-03-11-08, 7347-03-11-09, 7347-03-11-10, 7347-03-11-11, 7347-03-11-12, 7347-03-11-13, 7347-03-11-14, 7347-03-11-15, 7347-03-11-16, 7347-03-11-17, 7347-03-11-18, 7347-03-11-19, 7347-03-11-20, 7347-03-11-21, 7347-03-11-22, 7347-03-11-23, 7347-03-11-24, 7347-03-11-25, 7347-03-11-26, 7347-03-11-27, 7347-03-11-28, 7347-03-11-29, 7347-03-11-30, 7347-03-11-31, 7347-03-11-32, 7347-03-11-33, 7347-03-11-34, 7347-03-11-35, 7347-03-11-36, 7347-03-11-37.

These results only pertain to this job and should not be used in the interpretation of any other job. This report is only complete in its entirety. Refer to the listing below of the pages included in a complete final report.

Sincerely,

A handwritten signature in black ink that reads "Sandra Sobrino". The signature is written in a cursive, flowing style.

Sandra Sobrino
Asbestos & Materials Laboratory Manager
SanAir Technologies Laboratory

Final Report Includes:

- Cover Letter
- Analysis Pages
- Disclaimers and Additional Information

Sample conditions:

- 37 samples in Good condition.



SanAir ID Number
25016410
FINAL REPORT
3/13/2025 10:30:24 AM

Name: Helix Environmental Inc
Address: 1 Elizabeth Place
Suite 160
Dayton, OH 45417
Phone: 937-226-0650

Project Number: 7347
P.O. Number:
Project Name: Fire Station 15, 2801 Wayne Avenue
Collected Date: 3/11/2025
Received Date: 3/12/2025 10:25:00 AM

Analyst: Hogrefe, Sarah

Asbestos Bulk PLM EPA 600/R-93/116

SanAir ID / Description	Stereoscopic	Components		Asbestos Fibers
	Appearance	% Fibrous	% Non-fibrous	
7347-03-11-01 / 25016410-001 1st Fl (SE) Dormitory NW Area On Ceiling	White Fibrous Homogeneous	70% Cellulose	30% Other	None Detected
7347-03-11-02 / 25016410-002 1st Fl (SE) Dormitory SE Central Area, On Ceiling	White Fibrous Homogeneous	70% Cellulose	30% Other	None Detected
7347-03-11-03 / 25016410-003 1st Fl SE Central Womens Restroom, West of N Central Area	White Fibrous Homogeneous	40% Cellulose 30% Glass	30% Other	None Detected
7347-03-11-04 / 25016410-004 1st Fl Break Room , Center E Ceiling	White Fibrous Homogeneous	40% Cellulose 30% Glass	30% Other	None Detected
7347-03-11-05 / 25016410-005 Break Room, Center Ceiling	White Fibrous Homogeneous	40% Cellulose 30% Glass	30% Other	None Detected
7347-03-11-06 / 25016410-006 Break Room, Center Ceiling	White Fibrous Homogeneous	40% Cellulose 30% Glass	30% Other	None Detected
7347-03-11-07 / 25016410-007 Break Room Center Ceiling	White Fibrous Homogeneous	40% Cellulose 30% Glass	30% Other	None Detected
7347-03-11-08 / 25016410-008 Break Room N Area W Center On Floor, Sheet Flooring	Brown Non-Fibrous Heterogeneous		100% Other	None Detected
7347-03-11-08 / 25016410-008 Break Room N Area W Center On Floor, Mastic	Green Non-Fibrous Homogeneous		100% Other	None Detected
7347-03-11-09 / 25016410-009 1st Fl SW Central Hallway NW Area On Floor, Sheet Flooring	Brown Non-Fibrous Heterogeneous		100% Other	None Detected

Analyst:

Approved Signatory:

Analysis Date: 3/13/2025

Date: 3/13/2025



SanAir ID Number
25016410
FINAL REPORT
3/13/2025 10:30:24 AM

Name: Helix Environmental Inc
Address: 1 Elizabeth Place
Suite 160
Dayton, OH 45417
Phone: 937-226-0650

Project Number: 7347
P.O. Number:
Project Name: Fire Station 15, 2801 Wayne Avenue
Collected Date: 3/11/2025
Received Date: 3/12/2025 10:25:00 AM

Analyst: Hogrefe, Sarah

Asbestos Bulk PLM EPA 600/R-93/116

SanAir ID / Description	Stereoscopic	Components		Asbestos Fibers
	Appearance	% Fibrous	% Non-fibrous	
7347-03-11-09 / 25016410-009 1st Fl SW Central Hallway NW Area On Floor, Mastic	Green Non-Fibrous Homogeneous		100% Other	None Detected
7347-03-11-10 / 25016410-010 1st Fl West Vehicle Bay (Garage) NW Area on Fiberglass	Grey Non-Fibrous Homogeneous		98% Other	2% Chrysotile
7347-03-11-11 / 25016410-011 1st Fl Central Tower Solar Hot Water Storage Tank West Area	Tan Non-Fibrous Homogeneous		98% Other	2% Chrysotile
7347-03-11-12 / 25016410-012 Basement Central Area Central Tower	Tan Non-Fibrous Homogeneous		98% Other	2% Chrysotile
7347-03-11-13 / 25016410-013 Basement S Central Area On Hot Water Storage Tank East Side	Grey Non-Fibrous Homogeneous	5% Glass	85% Other	10% Chrysotile
7347-03-11-14 / 25016410-014 1st Fl NW Central Utility Tower, Solar Hot Water Storage	Grey Non-Fibrous Homogeneous	5% Glass	85% Other	10% Chrysotile
7347-03-11-15 / 25016410-015 Level 2 Central Tower East Central Area On Fiberglass	Tan Non-Fibrous Homogeneous		100% Other	None Detected
7347-03-11-16 / 25016410-016 1st Fl Break Room E Central Area Above Soffitt, Drywall	White Non-Fibrous Homogeneous	5% Cellulose	95% Other	None Detected
7347-03-11-16 / 25016410-016 1st Fl Break Room E Central Area Above Soffitt, Joint Compound	Off-White Non-Fibrous Homogeneous		100% Other	None Detected
7347-03-11-17 / 25016410-017 1st Fl SW Central laundry Room NW Area, Drywall	White Non-Fibrous Homogeneous	5% Cellulose	95% Other	None Detected

Analyst:

Approved Signatory:

Analysis Date: 3/13/2025

Date: 3/13/2025



SanAir ID Number
25016410
FINAL REPORT
3/13/2025 10:30:24 AM

Name: Helix Environmental Inc
Address: 1 Elizabeth Place
Suite 160
Dayton, OH 45417
Phone: 937-226-0650

Project Number: 7347
P.O. Number:
Project Name: Fire Station 15, 2801 Wayne Avenue
Collected Date: 3/11/2025
Received Date: 3/12/2025 10:25:00 AM

Analyst: Hogrefe, Sarah

Asbestos Bulk PLM EPA 600/R-93/116

SanAir ID / Description	Stereoscopic	Components		Asbestos Fibers
	Appearance	% Fibrous	% Non-fibrous	
7347-03-11-17 / 25016410-017 1st Fl SW Central laundry Room NW Area, Joint Compound	Off-White Non-Fibrous Homogeneous		100% Other	None Detected
7347-03-11-18 / 25016410-018 1st Fl SE Central Mens Restroom N Central Shower Stall, Stucco	White Non-Fibrous Heterogeneous		100% Other	None Detected
7347-03-11-18 / 25016410-018 1st Fl SE Central Mens Restroom N Central Shower Stall, Base	Grey Non-Fibrous Heterogeneous		100% Other	None Detected
7347-03-11-19 / 25016410-019 1st Fl SE Central Womens Restroom East Side, W Area on Ceili, Stucco	White Non-Fibrous Heterogeneous		100% Other	None Detected
7347-03-11-19 / 25016410-019 1st Fl SE Central Womens Restroom East Side, W Area on Ceili, Base	Grey Non-Fibrous Heterogeneous		100% Other	None Detected
7347-03-11-20 / 25016410-020 1st Fl SE Central Womens Restroom West Side, N Wall	White Non-Fibrous Homogeneous		100% Other	None Detected
7347-03-11-21 / 25016410-021 1st Fl NE Central Office/Bedroom SW Central Area On Floor, Floor Tile	Grey Non-Fibrous Homogeneous		98% Other	2% Chrysotile
7347-03-11-21 / 25016410-021 1st Fl NE Central Office/Bedroom SW Central Area On Floor, Mastic	Black Non-Fibrous Homogeneous		100% Other	None Detected
7347-03-11-22 / 25016410-022 1st Fl SE Dormitory, SE Area/Exercise Area On Floor, Floor Tile	Grey Non-Fibrous Homogeneous		98% Other	2% Chrysotile

Analyst:

Approved Signatory:

Analysis Date: 3/13/2025

Date: 3/13/2025



SanAir ID Number

25016410

FINAL REPORT

3/13/2025 10:30:24 AM

Name: Helix Environmental Inc
Address: 1 Elizabeth Place
Suite 160
Dayton, OH 45417
Phone: 937-226-0650

Project Number: 7347
P.O. Number:
Project Name: Fire Station 15, 2801 Wayne Avenue
Collected Date: 3/11/2025
Received Date: 3/12/2025 10:25:00 AM

Analyst: Hogrefe, Sarah

Asbestos Bulk PLM EPA 600/R-93/116

SanAir ID / Description	Stereoscopic	Components		Asbestos Fibers
	Appearance	% Fibrous	% Non-fibrous	
7347-03-11-22 / 25016410-022 1st Fl SE Dormitory, SE Area/Exercise Area On Floor, Mastic	Black Non-Fibrous Homogeneous		100% Other	None Detected
7347-03-11-23 / 25016410-023 1st Fl SE Dormitory SE Central Area Above CT, On Soffitt, Drywall	Grey Non-Fibrous Homogeneous	5% Cellulose	95% Other	None Detected
7347-03-11-23 / 25016410-023 1st Fl SE Dormitory SE Central Area Above CT, On Soffitt, Joint Compound	Off-White Non-Fibrous Homogeneous		100% Other	None Detected
7347-03-11-24 / 25016410-024 1st Floor SE Dormitory NW Area Above Ceiling Tile, Drywall	Grey Non-Fibrous Homogeneous	5% Cellulose	95% Other	None Detected
7347-03-11-24 / 25016410-024 1st Floor SE Dormitory NW Area Above Ceiling Tile, Joint Compound	Off-White Non-Fibrous Homogeneous		100% Other	None Detected
7347-03-11-25 / 25016410-025 Basement Central Tower SW Area On Hot Water Storage Tank	Grey Non-Fibrous Homogeneous	5% Glass	85% Other	10% Chrysotile
7347-03-11-26 / 25016410-026 Basement Central Tower Solar Water Tank	Grey Non-Fibrous Homogeneous	5% Glass	85% Other	10% Chrysotile
7347-03-11-27 / 25016410-027 Basement Central Tower NE Area	Tan Non-Fibrous Homogeneous		100% Other	None Detected
7347-03-11-28 / 25016410-028 2nd Fl Central Tower, NE Central Area on AH2	Tan Fibrous Homogeneous	80% Glass	20% Other	None Detected
7347-03-11-29 / 25016410-029 2nd Fl Central Tower SE Area On AH-02	Tan Fibrous Homogeneous	80% Glass	20% Other	None Detected

Analyst:

Approved Signatory:

Analysis Date: 3/13/2025

Date: 3/13/2025



SanAir ID Number
25016410
FINAL REPORT
3/13/2025 10:30:24 AM

Name: Helix Environmental Inc
Address: 1 Elizabeth Place
Suite 160
Dayton, OH 45417
Phone: 937-226-0650

Project Number: 7347
P.O. Number:
Project Name: Fire Station 15, 2801 Wayne Avenue
Collected Date: 3/11/2025
Received Date: 3/12/2025 10:25:00 AM

Analyst: Hogrefe, Sarah

Asbestos Bulk PLM EPA 600/R-93/116

SanAir ID / Description	Stereoscopic	Components		Asbestos Fibers
	Appearance	% Fibrous	% Non-fibrous	
7347-03-11-30 / 25016410-030 2nd Fl Central Tower Central Area on AH-2 West Side	Black Non-Fibrous Homogeneous		100% Other	None Detected
7347-03-11-31 / 25016410-031 2nd Fl Central Tower, Central Area On AH-27	Black Non-Fibrous Homogeneous		100% Other	None Detected
7347-03-11-32 / 25016410-032 1st Fl laundry Room W Wall, Cove Base	Brown Non-Fibrous Homogeneous		100% Other	None Detected
7347-03-11-32 / 25016410-032 1st Fl laundry Room W Wall, Mastic	Brown Non-Fibrous Homogeneous		100% Other	None Detected
7347-03-11-33 / 25016410-033 1st Fl Laundry N Wall Center	Brown Non-Fibrous Homogeneous		100% Other	None Detected
7347-03-11-34 / 25016410-034 1st Fl Laundry W Wall SW Corner	Brown Non-Fibrous Homogeneous		100% Other	None Detected
7347-03-11-35 / 25016410-035 1st Fl SE Central Hallway, E Wall, Cove Base	Black Non-Fibrous Homogeneous		100% Other	None Detected
7347-03-11-35 / 25016410-035 1st Fl SE Central Hallway, E Wall, Mastic	Tan Non-Fibrous Homogeneous		100% Other	None Detected
7347-03-11-36 / 25016410-036 1st Fl Break Room West Wall N Area, Cove Base	Black Non-Fibrous Homogeneous		100% Other	None Detected
7347-03-11-36 / 25016410-036 1st Fl Break Room West Wall N Area, Mastic	Tan Non-Fibrous Homogeneous		100% Other	None Detected

Analyst:

Approved Signatory:

Analysis Date: 3/13/2025

Date: 3/13/2025



SanAir ID Number

25016410

FINAL REPORT

3/13/2025 10:30:24 AM

Name: Helix Environmental Inc
Address: 1 Elizabeth Place
Suite 160
Dayton, OH 45417
Phone: 937-226-0650

Project Number: 7347
P.O. Number:
Project Name: Fire Station 15, 2801 Wayne Avenue
Collected Date: 3/11/2025
Received Date: 3/12/2025 10:25:00 AM

Analyst: Hogrefe, Sarah

Asbestos Bulk PLM EPA 600/R-93/116

SanAir ID / Description	Stereoscopic	Components		Asbestos Fibers
	Appearance	% Fibrous	% Non-fibrous	
7347-03-11-37 / 25016410-037 1st Fl N Central Office, SW Corner West Wall, Cove Base	Brown Non-Fibrous Homogeneous		100% Other	None Detected
7347-03-11-37 / 25016410-037 1st Fl N Central Office, SW Corner West Wall, Mastic	Brown Non-Fibrous Homogeneous		100% Other	None Detected

Analyst:

Approved Signatory:

Analysis Date: 3/13/2025

Date: 3/13/2025

Disclaimer and Additional Information:
Asbestos Bulk PLM EPA 600/R-93/116

This report is the sole property of the client named on the chain-of-custody (COC) submitted to SanAir Technologies Laboratory, Inc. (SanAir). Results in the report are confidential information intended only for the use by the customer listed on the COC. Neither results nor reports will be discussed with or released to any third party without our client's written permission. The final report shall not be reproduced, except in full, without written approval of the laboratory to assure that parts of the report are not taken out of context. This report and any information contained within shall not be edited, altered, or modified in any way by any persons or agencies receiving, viewing, distributing, or otherwise possessing a copy of this final report. The laboratory reserves the right to perform amendments to any finalized report, of which shall supersede and make obsolete any previous editions. Such changes, modifications, additions, or deletions shall be effective immediately upon notice thereof, which may be given by means including but not limited to posting on the SanAir client portal website, electronic or conventional mail, or by any other means.

The information provided in this report applies only to the samples submitted and is relevant only for the date, time, and location of sampling. The accuracy of the results is dependent upon the client's sampling procedure and information provided to the laboratory by the client on the COC. SanAir assumes no responsibility for the sampling procedure and will provide evaluation reports based solely on the sample(s) in the condition received at the laboratory and information provided by the client on the COC, such as: project number, project name, collection dates, P.O. number, special instructions, samples collected by, sample numbers, sample identifications, sample type, selected analysis type, flow rate, total volume or area, and start-stop times that may affect the validity of the results in this report. Samples were received in good condition unless otherwise noted on the report. When the client requires samples to be tested that deviates from a specific method or condition, all reported results may be affected by the deviation. SanAir assumes no responsibility or liability for the manner in which the results are used or interpreted.

This report does not constitute nor shall not be used by the client to claim product, process, system, or person certification, approval, or endorsement by NVLAP, NIST, NELAC, AIHA LAP, LLC or any other U.S. governmental agencies; all or some tests contained in this report may not be accredited by every local, state, and federal regulatory agencies. Refer to the SanAir website at www.sanair.com for copies of current certificates and scopes of various accreditations, certifications, and licenses or contact the laboratory for inquiries regarding the status or scope of an accreditation or certification.

Samples are held for a period of 60 days. Fibers smaller than 5 microns cannot be seen with this method due to scope limitations. For NY state samples, method EPA 600/M4-82-020 is performed.

NYELAP Disclaimer:

Polarized-light microscopy is not consistently reliable in detecting asbestos in floor covering and similar non-friable organically bound materials. Quantitative transmission electron microscopy is currently the only method that can be used to determine if this material can be considered or treated as non-asbestos containing.

Asbestos Accreditations, Certifications, and Licenses

National Voluntary Laboratory Accreditation Program (NVLAP) Lab Code 200870-0
City of Philadelphia Department of Public Health Air Management Services, Certification#ALL-460
Commonwealth of Pennsylvania Department of Environmental Protection Number 68-05397
California State Environmental Laboratory Accreditation Program Certificate Number 2915
Colorado Department of Public Health and Environment Registration Number AL-23143
Connecticut Department of Public Health Environmental Laboratory Registration Number PH-0105
Massachusetts Department of Labor Standards Asbestos Analytical Services License Number: AA000222
State of Maine Department of Environmental Protection License Number: LB-0075
New York State Department of Health Laboratory ID: 11983
State of Rhode Island Department of Health Certification No.: PLM00126
Texas Department of State Health Services License Number: 300440
Commonwealth of Virginia Department of Professional and Occupational Regulation Number: 3333000323
State of Washington Department of Ecology Laboratory ID: C989
State of West Virginia Bureau for Public Health Analytical Laboratory Number: LT000616
Vermont Department of Health License Number: Asb-Co-An-000006
Louisiana Department of Environmental Quality AI Number 212253, LELAP Lab ID #05088

HELIX ENVIRONMENTAL, INC.

1 Elizabeth Place, Suite 160 • Dayton, Ohio 45417-3445
Phone: (937) 226-0650 Fax: (937) 226-0653 Email: helix@helixenv.com

RUSH - YES OR NO

LABORATORY: 5m Air
DATE SAMPLED: 3/11/25
DATE REQUIRED: 24 APR 24
JOB NO./LOCATION: 7347 Dayton, OH
CLIENT: 490 Architecture
BUILDING: Fire Station 15, 2801 Wayne Avenue
INSPECTOR: Paul French
JOB NUMBER: 7347

BULK SAMPLE DATA SHEET

ANALYSES REQUESTED: Asbestos PLM

HELIX SAMPLE ID NUMBER	AMOUNT	REPRESENTATIVE SAMPLE LOCATION	MATERIAL DESCRIPTION	FRAGILE/ NON	CONDITION	COMMENTS
7347-03-11-01	740 SF	1st Fl. (SE) Lobby, NW Area, on ceiling,	2' X 2' Ceiling tile, random holes and gouges, no visible	F	F	2670 = 180 + (13 x 15) = 600
7347-03-11-02	-	1st Fl., SE Lobby, SE central Area, on ceiling,	2' X 2' Ceiling tile, random holes and gouges, no visible	F	F	
7347-03-11-03	380 SF	1st Fl., SE central Lobby, SE central Area, on ceiling,	2' X 2' Ceiling tile, random holes and gouges, no visible	F	F	SG +
7347-03-11-04	-	1st Fl., Break Room, Center E Ceiling,	2' X 2' Ceiling tile, random holes and gouges, no visible	F	F	
7347-03-11-05	8 SF	Break Room, Center Ceiling,	2' X 2' Ceiling tile, random holes and gouges, no visible	F	G	Holes replacement
7347-03-11-06	-	Break Room, Center Ceiling,	2' X 2' Ceiling tile, random holes and gouges, no visible	F	G	Holes replacement
7347-03-11-07	-	Break Room, Center Ceiling,	2' X 2' Ceiling tile, random holes and gouges, no visible	F	G	Holes replacement
7347-03-11-08	1100 SF	Break Room, NW Area, on floor,	Dark Brown faux wood sheet flooring, green plastic	N	F	12 x 12 = 144 sq ft
7347-03-11-09	-	1st Fl., SW central Hallway, NW Area, on floor,	Dark Brown faux wood sheet flooring, green plastic	N	F	11 x 11 = 121 sq ft
7347-03-11-10	-	1st Fl., West Lobby (Garage), NW Area, on floor,	Light gray tile insulation	N	F	
7347-03-11-11	-	1st Fl., central Tower, solar hot water storage tank, west side, on plastic pipe fitting,	tan pipe insulation jacket	N	F	
7347-03-11-12	-	Central Tower, central Area	tan pipe insulation jacket	N	F	

THIS IS A CHAIN OF CUSTODY DOCUMENT. PLEASE COMPLETE, SIGN, AND DATE. PLEASE RETURN ORIGINAL TO HELIX ENVIRONMENTAL, INC.

REC'D 1	Received by: <u>Paul French</u>	Company: <u>Helix Env, Inc.</u>	Date/Time: <u>3/11/25 14:00</u>	REC'D 3	Received by:	Company:	Date/Time:
REC'D 2	Received by: <u>SSC 3-12-25 10:35 AM</u>	Company:	Date/Time:	REC'D 4	Received by:	Company:	Date/Time:

3-12-25 10:35 AM
3-12-25 10:35 AM

HELIXXXX

ENVIRONMENTAL, INC.

1 Elizabeth Place, Suite 160 • Dayton, Ohio 45417-3445
Phone: (937) 226-0650 Fax: (937) 226-0653 Email: helix@helixenv.com

LABORATORY: Sam HVR 016410
DATE SAMPLED: 3/11/25
DATE REQUIRED: 24 APR 2025
JOB NO./LOCATION: 7347 Dayton, OH
CLIENT: Age Architecture
BUILDING: Fire Station 5, 2801 Wayne Avenue
INSPECTOR: Ben Froehlich
JOB NUMBER: 7347

BULK SAMPLE DATA SHEET

ANALYSES REQUESTED: Asbestos PLM

HELIX SAMPLE ID NUMBER	AMOUNT	REPRESENTATIVE SAMPLE LOCATION	MATERIAL DESCRIPTION	FRAGILE/ NON	CONDITION	COMMENTS
7347-03-11-13	16 SF	Basement S. Central Area, on 1st water storage tank, east side, 4 ft.	Light grey pipe insulation	N	F	Microplastic material under metal bucket
7347-03-11-14	16 SF	1st Fl., NW central utility tunnel, solar hot water storage tank, west side, 17 ft.	Light grey pipe insulation	N	F	
7347-03-11-15		Level 2, Central Tunnel, East central area, on 1st fl., insulated pipe, 4 ft.	Tan pipe insulation	N	F	
7347-03-11-16		1st Fl., Great Room, E. central area, above CT, on 3rd fl., 8 ft.	Drywall and joint compound	N	F	
7347-03-11-17		1st Fl., NW Central Laundry Room, NW Area, 4 Hole, 8 ft.	Drywall and joint compound	N	F	
7347-03-11-18	110 SF	1st Fl., SE Central Main's Restroom, N. central storage stall, S. Area, E. central Area, on ceiling, 8 ft.	Rough stucco, base layer (dry)	N	F	15x7=
7347-03-11-19	110 SF	1st Fl., SE Central Main's Restroom, East side, N. central Area, on ceiling, 8 ft.	Stucco, base layer (dry)	N	F	6x7=56x3=
7347-03-11-20	-	1st Fl., SE Central Main's Restroom, West side, N. central Area, on ceiling, 8 ft.	Rough block coat	N	F	Remains of stucco
7347-03-11-21	615 SF	1st Fl., SE Central Main's Restroom, West side, N. central Area, on ceiling, 8 ft.	12x12 rough floor tile	N	F	Textured +
7347-03-11-22	1224 SF	1st Fl., SE Central Main's Restroom, West side, N. central Area, on ceiling, 8 ft.	12x12 rough floor tile	N	F	36x34=
7347-03-11-23	3600 SF	1st Fl., SE Central Main's Restroom, West side, N. central Area, on ceiling, 8 ft.	Drywall and joint compound	N	F	4' on perimeter of doorway
7347-03-11-24		1st Fl., SE Central Main's Restroom, West side, N. central Area, on ceiling, 8 ft.	Drywall and joint compound	N	F	

THIS IS A CHAIN OF CUSTODY DOCUMENT. PLEASE COMPLETE, SIGN, AND DATE. PLEASE RETURN ORIGINAL TO HELIX ENVIRONMENTAL, INC.

REC'D 1	Relinquished by: <u>Ben Froehlich</u>	Company: <u>Helix Env, Inc.</u>	Date/Time: <u>3/11/25 10:25 AM</u>	REC'D 3	Relinquished by:	Company:	Date/Time:
REC'D 2	Relinquished by: <u>ESD 3-12-25 10:25 AM</u>	Company:	Date/Time:	REC'D 4	Relinquished by:	Company:	Date/Time:

ESD 3-12-25 10:25 AM

HELIX ENVIRONMENTAL, INC.

1 Elizabeth Place, Suite 160 • Dayton, Ohio 45417-3445
Phone: (937) 226-0650 Fax: (937) 226-0653 Email: helix@helixenv.com

RUSH - YES OR NO ☒ YES

LABORATORY: SWH
DATE SAMPLED: 3/11/25
DATE REQUIRED: 24 APR 24
JOB NO./LOCATION: 73471 Dayton, OH
CLIENT: APR Architecture
BUILDING: Fire Station 15, 2801 Wayne Avenue
INSPECTOR: Ben Froehlich
JOB NUMBER: 7347

BULK SAMPLE DATA SHEET

ANALYSES REQUESTED: Asbestos PLM

HELIX SAMPLE ID NUMBER	AMOUNT	REPRESENTATIVE SAMPLE LOCATION	MATERIAL DESCRIPTION	FRIABLE/ NON	CONDITION	COMMENTS
7347-03-11-25	34 SF	Basement, 5th Central Area, on hot water storage tank, west end of AH-1.	Light grey tank insulation sealant	N	F	
7347-03-11-26	76 SF	Basement, central Tank, P.T. side of bottom, west end, 2nd fl.	Light grey tank insulation sealant	N	F	Top and Bottom
7347-03-11-27	—	Basement, central Tank, P.T. side of bottom, west end, 2nd fl.	Tan Fibre Insulation sealant	N	F	
7347-03-11-28	7 SF (a)	2nd Fl, central Tank, NE central Area, on AH-2, on ductwork, NW corner, 5th fl.	Tan canvas Vibration Isolator cloth	F	F	
7347-03-11-29	—	2nd Fl, central Tank, SE Area, on AH-2, on ductwork, 2nd fl.	Tan canvas Vibration Isolator cloth	F	F	3 SF
7347-03-11-30	2 SF	2nd Fl, central Tank, central Area, on AH-2, west side, at refrigerant pipe, 2nd fl.	Black sweet wrap	N	F	
7347-03-11-31	—	2nd Fl, central Tank, central Area, on AH-2, west side, at water pipe, 1st fl.	Black sweet wrap	N	F	
7347-03-11-32	34 SF	1st fl, laundry Room, W wall	4" Brown Cove	N	F	1 SF Brown black
7347-03-11-33	6 SF	1st fl, laundry, N wall, central Area, on AH-2, 4th behind cover base	Grey-iron Mastic	N	F	
7347-03-11-34	—	1st fl, laundry, W wall SW	Grey-iron Mastic	N	F	18 LF
7347-03-11-35	100 SF	Basement, central Tank, P.T. side of bottom, west end, 2nd fl.	6" black core base, 1st fl.	N	F	
7347-03-11-36	—	1st fl, central Tank, P.T. side of bottom, west end, 2nd fl.	6" black core base, 1st fl.	N	F	

THIS IS A CHAIN OF CUSTODY DOCUMENT. PLEASE COMPLETE, SIGN AND DATE. PLEASE RETURN ORIGINAL TO HELIX ENVIRONMENTAL, INC.

REC'D 1	Relinquished by: <u>Ben Froehlich</u>	Company: <u>Helix Env, Inc.</u>	Date/Time: <u>3/11/25 18:00</u>	REC'D 3	Relinquished by:	Company:	Date/Time:
REC'D 2	Received by: <u>ESC 3-12-25 10:25 AM</u>	Company:	Date/Time:	REC'D 4	Relinquished by:	Company:	Date/Time:

ESC 3-12-25 10:25 AM

1 Elizabeth Place, Suite 160 • Dayton, Ohio 45417-3445
 Phone: (937) 226-0650 Fax: (937) 226-0653 Email: helix@helixenv.com

RUSH - YES OR ☒ NO

LABORATORY: 504 HY
 DATE SAMPLED: 3/11/25
 DATE REQUIRED: 24 APR 24
 JOB NO./LOCATION: 7347 Dayton, OH
 CLIENT: 498 Architecture
 BUILDING: Fire Station 15, 2801 Wayne Avenue
 INSPECTOR: Ban Fresh Link
 JOB NUMBER: 7347

BULK SAMPLE DATA SHEET

ANALYSES REQUESTED: Asbestos PLM

HELIX SAMPLE ID NUMBER	AMOUNT	REPRESENTATIVE SAMPLE LOCATION	MATERIAL DESCRIPTION	FRAGILE/ NON	CONDITION	COMMENTS
7347-03-11-37	5L	1st Fl. N. Central Wash Office, 2nd corner, West Wall,	4" Brown Cove Base and Brown Mural	N	F	
7347-03-11-38						
7347-03-11-39						
7347-03-11-40						
7347-03-11-41						
7347-03-11-42						
7347-03-11-43						
7347-03-11-44						
7347-03-11-45						
7347-03-11-46						
7347-03-11-47						
7347-03-11-48						

THIS IS A CHAIN OF CUSTODY DOCUMENT. PLEASE COMPLETE, SIGN, AND DATE. PLEASE RETURN ORIGINAL TO HELIX ENVIRONMENTAL, INC.

REC'D 1	Relinquished by: <u>Ban Fresh Link</u>	Company: <u>Helix Environmental</u>	Date/Time: <u>3/11/25 15:00</u>	REC'D 3	Relinquished by:	Company:	Date/Time:
REC'D 2	Received by: <u>ESC 3-12-25 10:35</u>	Company: <u>Helix</u>	Date/Time:	REC'D 4	Relinquished by:	Company:	Date/Time:

ESC 3-12-25 10:35 am
3-12-25 10:35 am



Analysis Report
prepared for
Helix Environmental Inc

Report Date: 3/21/2025

Project Name: Fire Station 15, 2801 Wayne Avenue

Project #: 7347

SanAir ID#: 25017960



NVLAP LAB CODE 200870-0

10501 Trade Court, North Chesterfield, Virginia 23236
888.895.1177 | 804.897.1177 | fax: 804.897.0070 | LabReports@SanAir.com | SanAir.com



SanAir ID Number

25017960

FINAL REPORT

3/21/2025 10:55:46 AM

Name: Helix Environmental Inc
Address: 1 Elizabeth Place
Suite 160
Dayton, OH 45417
Phone: 937-226-0650

Project Number: 7347
P.O. Number:
Project Name: Fire Station 15, 2801 Wayne Avenue
Collected Date: 3/11/2025
Received Date: 3/19/2025 9:53:00 AM

Dear Benjamin Froehlich,

We at SanAir would like to thank you for the work you recently submitted. The 5 sample(s) were received on Wednesday, March 19, 2025 via Fax or Email request. The final report(s) is enclosed for the following sample(s): 7347-03-11-10, 7347-03-11-11, 7347-03-11-12, 7347-03-11-21, 7347-03-11-22.

These results only pertain to this job and should not be used in the interpretation of any other job. This report is only complete in its entirety. Refer to the listing below of the pages included in a complete final report.

Sincerely,

A handwritten signature in black ink that reads "Sandra Sobrino". The signature is written in a cursive, flowing style.

Sandra Sobrino
Asbestos & Materials Laboratory Manager
SanAir Technologies Laboratory

Final Report Includes:

- Cover Letter
- Analysis Pages
- Disclaimers and Additional Information

Sample conditions:

- 5 samples in Good condition.



SanAir ID Number
25017960
FINAL REPORT
3/21/2025 10:55:46 AM

Name: Helix Environmental Inc
Address: 1 Elizabeth Place
Suite 160
Dayton, OH 45417
Phone: 937-226-0650

Project Number: 7347
P.O. Number:
Project Name: Fire Station 15, 2801 Wayne Avenue
Collected Date: 3/11/2025
Received Date: 3/19/2025 9:53:00 AM

Analyst: Mayes, Jean

Asbestos Bulk EPA PLM NOB EPA 600/R-93/116

SanAir ID / Description	Appearance	% Fibrous	% Non Fibrous	Asbestos Types	% Total Asbestos
25017960-001 / 7347-03-11-10 1st Fl., West Vehicle Bay (Garage), NW Area, On Fiberglass	Grey Non-Fibrous Homogeneous		98.9 %	Chrysotile	1.1 %
25017960-002 / 7347-03-11-11 1st Fl., Central Tower, Solar Hot Water Storage Tank, West	Tan Non-Fibrous Homogeneous		97.3 %	Chrysotile	2.7 %
25017960-003 / 7347-03-11-12 Basement Central Tower S. Central Area Pipe Insulation	Tan Non-Fibrous Homogeneous		98.4 %	Chrysotile	1.6 %
25017960-004 / 7347-03-11-21 1st Fl., NE Central Office/ Bedroom/ SW Central, Floor Tile	Grey Non-Fibrous Homogeneous		99.4 %	Chrysotile	0.6 %
25017960-005 / 7347-03-11-22 1st Fl., SE Dormitory, SE Area (Exercise Area), Floor Tile	Grey Non-Fibrous Homogeneous		99.6 %	Chrysotile	0.4 %

EPA 400 Point Count with Gravimetric Reduction.

Analyst:

Analysis Date: 3/20/2025

Approved Signatory:

Date: 3/20/2025

Disclaimer and Additional Information:
Method for the Determination of Asbestos in Bulk Building Materials
EPA 600/R-93/116, July 1993 PLM EPA NOB

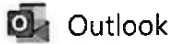
This report is the sole property of the client on the chain-of-custody (COC) submitted to SanAir Technologies Laboratory, Inc. (SanAir). Results in the report are confidential information intended only for the use by the customer listed on the COC. Neither results nor reports will be discussed with or released to any third party without our client's written permission to maintain client confidentiality. The final report shall not be reproduced, except in full, without written authorization of the laboratory to assure that parts of the report are not taken out of context. This report and any information contained within shall not be edited, altered, or modified in any way by any persons or agencies receiving, viewing, distributing, or otherwise possessing a copy of this final report. The laboratory reserves the right to perform amendments to any finalized report, of which shall supersede and make obsolete any previous editions. Such changes, modifications, additions, or deletions shall be effective immediately upon notice thereof, which may be given by means including but not limited to posting on the SanAir client portal website, electronic or conventional mail, or by any other means.

The information provided in this report applies only to the samples submitted and is relevant only for the date, time, and location of sampling. The accuracy of the results is dependent upon the client's sampling procedure and information provided to the laboratory by the client on the COC. SanAir assumes no responsibility for the sampling procedure and will provide evaluation reports based solely on the sample(s) in the condition in which they arrived at the laboratory and information provided by the client on the COC, such as: project number, project name, collection dates, P.O. number, special instructions, samples collected by, sample numbers, sample identifications, sample type, selected analysis type, flow rate, total volume or area, and start - stop times that may affect the validity of the results in this report. Samples were received in good condition unless otherwise noted. When client requires samples to be tested that deviates from a specific method or condition, all reported results may be affected by the deviation. Where noted on the chain of custody, 400 point count with gravimetric reduction was employed with this analysis. Limit of detection is 0.25%. SanAir assumes no responsibility or liability for the manner in which the results are used or interpreted.

This report does not constitute and shall not be used to claim product, process, system, or person certification, approval, or endorsement by NVLAP, NIST, NELAC, AIHA LAP, LLC or any other U.S. governmental agencies; all or some tests contained in this report may not be certified or accredited by every local, state, and federal regulatory agency. Refer to the SanAir website at www.sanair.com for copies of current certificates and scopes of various accreditations, certifications, and licenses or contact the laboratory for inquiries regarding the status or scope of an accreditation or certification.

Samples are held for a period of 60 days. Fibers smaller than 5 microns cannot be seen with this method due to scope limitations.

25017960



Fw: Analysis Report for Job 25016410 is complete.

From Maria E. Coker <mcoker@sanair.com>

Date Wed 3/19/2025 10:13 AM

To Maria E. Coker <mcoker@sanair.com>

From: Benjamin Froehlich <bfroehlich@helixenv.com>

Sent: Wednesday, March 19, 2025 9:53 AM

To: Support <support@sanair.com>

Subject: Re: Analysis Report for Job 25016410 is complete.

EXTERNAL EMAIL: DO NOT CLICK on links or attachments unless you recognize the sender and know the content is safe.

Yes,

Please analyze the samples for PLM EPA NOB for 48 hour turn around.

Thanks,
Ben Froehlich
Helix Environmental, Inc.
(937) 226-0650

On Mar 18, 2025, at 4:27 PM, Support <support@sanair.com> wrote:

Good Afternoon,

I am following up on this point count request. The samples will need to be analyzed ABBEN (PLM EPA NOB), which requires your approval. Please confirm this is acceptable so we can proceed.

Please let me know if you have any questions.

Respectfully,

Cecelia Toler
Customer Service Representative
SanAir Technologies Laboratory, Inc.
10501 Trade Court
N. Chesterfield, VA 23236
Phone 804-897-1177 Ext 208
Fax 804-897-0070
www.SanAir.com

<Outlook-x5zefhif.png>

Asbestos, Lead & Metals, Microbiology, Legionella, Materials Science Testing

<Outlook-Facebook.png> <Outlook-Linkdin.png> <Outlook-blog.png>

2018, 2019, 2020, and 2021 Winner of Top work places in Richmond

MC

3/19/25

Page 5 of 10
9:53 AM

25017960

The information transmitted herewith is sensitive information intended only for use to the individual or entity to which it is addressed. If the reader of this message is not the intended recipient, you are hereby notified that any review, retransmission, dissemination, distribution, copying or other use of, or taking of any action in reliance upon, this information is strictly prohibited. If you have received this communication in error, please contact the sender and delete the material from your computer.

From: Benjamin Froehlich <bfroehlich@helixenv.com>
Sent: Thursday, March 13, 2025 4:50 PM
To: Lab Reports <labreports@sanair.com>
Subject: Re: Analysis Report for Job 25016410 is complete.

EXTERNAL EMAIL: DO NOT CLICK on links or attachments unless you recognize the sender and know the content is safe.

Hello,

May I please have 48-hour turn-around point counts on the following samples?

7347-03-11-10 (25016410-010)
7347-03-11-11 (25016410-011)
7347-03-11-12 (25016410-012)
7347-03-11-21 (25016410-021), floor tile only
7347-03-11-22 (25016410-022), floor tile only

Thanks,
Ben Froehlich
Helix Environmental, Inc,
(937) 226-0650

> On Mar 13, 2025, at 10:30 AM, SanAir Technologies Laboratory <labreports@sanair.com> wrote:
>
> <25016410_Fire Station 15, 2801 Wayne Avenue_2025313103024.pdf>

MC

3/19/25

Page 6 of 10
4:53 PM

25017960 NOB



1 Elizabeth Place, Suite 160 • Dayton, Ohio 45417-3445
 Phone: (937) 226-0650 Fax: (937) 226-0653 Email: helix@helixenv.com

RUSH - YES OR (NO)

LABORATORY: sm

DATE SAMPLED: 3/11/25

DATE REQUIRED: 24 Hrs

JOB NO./LOCATION: 7347 Dayton, OH

CLIENT: H&B Architecture

BUILDING: Fire Station 15, 2801 Wayne Avenue

INSPECTOR: Phil Froehlich

JOB NUMBER: 7347

BULK SAMPLE DATA SHEET

ANALYSES REQUESTED: Asbestos Plan

HELIX SAMPLE ID NUMBER	AMOUNT	REPRESENTATIVE SAMPLE LOCATION	MATERIAL DESCRIPTION	FRAGILE/ NON	CONDITION	COMMENTS
7347-03-11-01	760 SF	1st Fl. (SE) Corridor, NW Area, on Ceiling	2' x 2' Acoustic tile, Random Holes and cracks, loose tiles	F	F	20-25% = 180 + 600
7347-03-11-02	-	1st Fl, SE Corridor, SE Central Area on Ceiling	2' x 2' Acoustic tile, Random Holes and cracks, loose tiles	F	F	
7347-03-11-03	380 SF	1st Fl, SE Corridor, SE Central Area, West side, N. Central Area	2' x 2' Acoustic tile, Random Holes and cracks, loose tiles	F	F	
7347-03-11-04	-	1st Fl, Break Room, Center E Ceiling	2' x 2' Acoustic tile, Random Holes and cracks, loose tiles	F	F	56 +
7347-03-11-05	85 SF	Break Room, Center Ceiling	2' x 2' Acoustic tile, Random Holes and cracks, loose tiles	F	G	Holes replacement
7347-03-11-06	-	Break Room, Center Ceiling	2' x 2' Acoustic tile, Random Holes and cracks, loose tiles	F	G	Holes replacement
7347-03-11-07	-	Break Room, Center Ceiling	2' x 2' Acoustic tile, Random Holes and cracks, loose tiles	F	G	Holes replacement
7347-03-11-08	1100 SF	Break Room, N. Area, on Floor	Dark Brown faux wood sheet flooring, green plastic	N	F	12' x 12' = FT A below
7347-03-11-09	-	1st Fl, SW Central Hallway, NW Area, on Floor	Dark Brown faux wood sheet flooring, green plastic	N	F	11' x 11'
7347-03-11-10	-	1st Fl, West (Behind Bridge) NW Area, on Floor	Light gray pipe insulation	N	F	
7347-03-11-11	-	1st Fl, Central Tower, solar hot water storage tank, West side, on plastic pipe fitting	Tan pipe insulation	N	F	
7347-03-11-12	-	Central Area, on Floor	tan pipe insulation	N	F	

THIS IS A CHAIN OF CUSTODY DOCUMENT. PLEASE COMPLETE, SIGN, AND DATE. PLEASE RETURN ORIGINAL TO HELIX ENVIRONMENTAL, INC.

REC'D 1	Phil Froehlich	Helix Environmental, Inc.	3/11/25 12:00	REC'D 3	Helix Environmental, Inc.	3/11/25 12:00
REC'D 2	ESC 3-12-25 10:25 AM	Helix Environmental, Inc.	3/11/25 12:00	REC'D 4	Helix Environmental, Inc.	3/11/25 12:00

3-12-25 10:25 AM
 3-12-25 10:25 AM

25017960 N08
25016410 PLM

HELIX ENVIRONMENTAL, INC.

1 Elizabeth Place, Suite 160 • Dayton, Ohio 45417-3445
Phone: (937) 226-0650 Fax: (937) 226-0653 Email: helix@helixenv.com

LABORATORY: smhv
DATE SAMPLED: 3/11/25
DATE REQUIRED: 24 Hrs. JAT
JOB NO./LOCATION: 7347 Dayton, OH
CLIENT: Agg Architecture
BUILDING: Five Station 15, 2801 Wayne Avenue
INSPECTOR: Pat Freshh
JOB NUMBER: 7347

RUSH - YES OR (NO)

BULK SAMPLE DATA SHEET

ANALYSES REQUESTED: Asbestos PLM

HELIX SAMPLE ID NUMBER	AMOUNT	REPRESENTATIVE SAMPLE LOCATION	MATERIAL DESCRIPTION	FRAGILE/ NON	CONDITION	COMMENTS
7347-03-11-13	10 SF	Basement, S. Central Area, on wall water storage tank, east side, 4 ft.	Light Gray, fine granulation, stucco	N	F	Fluoroglass bucket under metal jacket
7347-03-11-14	16 SF	1st Fl., NW central utility tunnel, silver hot water storage tank, west side, 17 ft.	Light Gray, fine granulation, stucco	N	F	
7347-03-11-15		Level 2, Central Tunnel, East central Area, on Fiberglass insulated pipe, 4 ft.	Tan fine granulation, sealant	N	F	
7347-03-11-16		1st Fl., West room, i.e. central Area, Above CT, on scaffolding	Original and joint compound	N	F	
7347-03-11-17		1st Fl., SW central Laundry Room, NW Area, 8 ft.	Original and joint compound	N	F	
7347-03-11-18	110 SF	1st Fl., SE central Area, 1st room, NW central storage tank, S. Area, on ceiling, 8 ft.	Rough stucco / Base layer (grey)	N	F	15x7 =
7347-03-11-19	160 SF	1st Fl., SE central women's restroom, West side, NW. Above ceiling, this Area, on ceiling, 6 ft.	Stucco, Base Layer (dark grey), Rough	N	F	6x7 = 56 x 7 =
7347-03-11-20	-	1st Fl., SE central women's restroom, West side, NW, wall, Above ceiling, this Area, on ceiling, 8 ft.	Rough black coat	N	F	Remains of stucco
7347-03-11-21	815 SF 1839 SF	1st Fl., SE central office / Reception / SW central Area, on Floor, 8.5 ft.	1st Fl., SE central office / Reception / SW central Area, on Floor, 8.5 ft.	N	F	Textured +
7347-03-11-22	1224 SF 2000 SF	1st Fl., SE central Area, (Exercise Area) on Floor, 8.5 ft.	1st Fl., SE central Area, (Exercise Area) on Floor, 8.5 ft.	N	F	36 x 34 =
7347-03-11-23		1st Fl., SE central Area, (Exercise Area) on Floor, 8.5 ft.	Original and joint compound	N	F	4' on perimeter of doorway
7347-03-11-24		1st Fl., SE central Area, (Exercise Area) on Floor, 8.5 ft.	Original and joint compound	N	G	

THIS IS A CHAIN OF CUSTODY DOCUMENT. PLEASE COMPLETE, SIGN AND DATE. PLEASE RETURN ORIGINAL TO HELIX ENVIRONMENTAL, INC.

REC'D 1	Relinquished by: <u>Pat Freshh</u>	Company: <u>Helix Env, Inc.</u>	Relinquished by:	Company:	Date/Time:
REC'D 2	Relinquished by: <u>Pat Freshh</u>	Company: <u>Helix Env, Inc.</u>	Relinquished by:	Company:	Date/Time:

REC'D 3-12-25 10:25 AM
REC'D 3-12-25 10:25 AM
REC'D 3-12-25 10:25 AM

25077960 NAB

25016410 PLM



1 Elizabeth Place, Suite 160 • Dayton, Ohio 45417-3445
Phone: (937) 226-0650 Fax: (937) 226-0653 Email: helix@helixenv.com

RUSH - YES (NO)

LABORATORY: SMHV
DATE SAMPLED: 3/11/25
DATE REQUIRED: 24 AF - JAJ
JOB NO./LOCATION: 7347 Dayton, OH
CLIENT: APC Architecture
BUILDING: Fire Station 15, 2801 Wayne Avenue
INSPECTOR: Phil Froehlich
JOB NUMBER: 7347

ANALYSES REQUESTED: Asbestos PLM

BULK SAMPLE DATA SHEET

HELIX SAMPLE ID NUMBER	AMOUNT	REPRESENTATIVE SAMPLE LOCATION	MATERIAL DESCRIPTION	FRAGILE/ NON	CONDITION	COMMENTS
7347-03-11-25	3A SF	Basement, 5th Central Area, on hot water storage tank, west end	Light Gray Tank Insulation Sealant	N	F	
7347-03-11-26	76 SF	Basement, central tower, P.A. 3, side of bottom, upper	Light Gray Tank Insulation Sealant	N	F	Top and Bottom
7347-03-11-27	—	Basement, central tower, P.A. 3, side of bottom, upper	Tan Fire Insulation Sealant	N	F	
7347-03-11-28	1 SF (2)	Basement, central tower, P.A. 3, side of bottom, upper	Tan Canvas Vibration Isolator cloth	F	F	
7347-03-11-29	—	Basement, central tower, P.A. 3, side of bottom, upper	Tan Canvas Vibration Isolator cloth	F	F	
7347-03-11-30	2 SF	Basement, central tower, P.A. 3, side of bottom, upper	Black Sweat wrap	N	F	3 SF
7347-03-11-31	—	Basement, central tower, P.A. 3, side of bottom, upper	Black sweat wrap	N	F	
7347-03-11-32	3 LF	1st Fl, Laundry, N Wall Center	4" Brown Core Base & Mast	N	F	1 SF Brown Mast
7347-03-11-33	6 SF	1st Fl, Laundry, N Wall SW	Gray Masonic behind core base	N	F	18 LF
7347-03-11-34	—	1st Fl, Laundry, N Wall SW	Gray Masonic behind core base	N	F	
7347-03-11-35	100 SF	1st Fl, Central Hallway, E. wall, 5 Central Area	6" Black core base, Tan Mast	N	G	
7347-03-11-36	—	1st Fl, Break room, West wall, N. Area, 0 fl	6" Black core base, Tan Mast	N	G	

THIS IS A CHAIN OF CUSTODY DOCUMENT. PLEASE COMPLETE, SIGN, AND DATE. PLEASE RETURN ORIGINAL TO HELIX ENVIRONMENTAL, INC.

REC'D 1	Helix Env., Inc.	3/11/25 18:00	REC'D 3	Company	Date/Time
REC'D 2	ESD 3-12-25 10:25 AM	3/11/25 18:00	REC'D 4	Company	Date/Time

ESD 3-12-25 10:25 AM

23017960 Nov
25016410 PLM



1 Elizabeth Place, Suite 160 • Dayton, Ohio 45417-3445
Phone: (937) 226-0650 Fax: (937) 226-0653 Email: helix@helixenv.com

RUSH - YES OR (NO)

LABORATORY: SEM HV
DATE SAMPLED: 3/11/25
DATE REQUIRED: 24 APR 2025
JOB NO./LOCATION: 7347 Dayton, OH
CLIENT: HR Architecture
BUILDING: Fire Station 5, 2801 Wayne Avenue
INSPECTOR: PLM
JOB NUMBER: 7347

BULK SAMPLE DATA SHEET				ANALYSES REQUESTED: Asbestos PLM		
HELIX SAMPLE ID NUMBER	AMOUNT	REPRESENTATIVE SAMPLE LOCATION	MATERIAL DESCRIPTION	FRAGILE/ NON	CONDITION	COMMENTS
7347-03-11-37	5L	1st Fl. N. Central Div. Office, 2nd corner, west wall	4" Brown Cave Base and Brown Mastic	N	F	
7347-03-11-38						
7347-03-11-39						
7347-03-11-40						
7347-03-11-41						
7347-03-11-42						
7347-03-11-43						
7347-03-11-44						
7347-03-11-45						
7347-03-11-46						
7347-03-11-47						
7347-03-11-48						

THIS IS A CHAIN OF CUSTODY DOCUMENT. PLEASE COMPLETE, SIGN, AND DATE. PLEASE RETURN ORIGINAL TO HELIX ENVIRONMENTAL, INC.

REC'D 1	Requisitioned by: <u>PLM</u>	Company: <u>Helix Environmental</u>	REC'D 3	Requisitioned by:	Company:	Date/Time:
REC'D 2	Requisitioned by: <u>ESL</u>	Company: <u>ESL</u>	REC'D 4	Requisitioned by:	Company:	Date/Time:

ESL 3-12-25 10:35 AM
ESL 3-12-25 10:25 AM



Analysis Report
prepared for
Helix Environmental Inc

Report Date: 4/4/2025

Project Name: App Architecture, Fire Station 15, 2801 Wayne Ave

Project #: 7347

SanAir ID#: 25021458



NVLAP LAB CODE 600227-0

11709 Chesterdale Road, Cincinnati, Ohio 45246
888.895.1177 | 513.438.6066 | LabReports@SanAir.com | SanAir.com



SanAir ID Number

25021458

FINAL REPORT

4/4/2025 10:47:38 AM

Name: Helix Environmental Inc
Address: 1 Elizabeth Place
Suite 160
Dayton, OH 45417
Phone: 937-226-0650

Project Number: 7347
P.O. Number: Amended Report CAT 04.04.25
Project Name: App Architecture, Fire Station 15, 2801
Wayne Ave
Collected Date: 4/1/2025
Received Date: 4/2/2025 10:10:00 AM

Dear Benjamin Froehlich,

We at SanAir would like to thank you for the work you recently submitted. The 23 sample(s) were received on Wednesday, April 02, 2025 via UPS. The final report(s) is enclosed for the following sample(s): 7347-04-01-01, 7347-04-01-02, 7347-04-01-03, 7347-04-01-04, 7347-04-01-05, 7347-04-01-06, 7347-04-01-07, 7347-04-01-08, 7347-04-01-09, 7347-04-01-10, 7347-04-01-11, 7347-04-01-12, 7347-04-01-13, 7347-04-01-14, 7347-04-01-15, 7347-04-01-16, 7347-04-01-17, 7347-04-01-18, 7347-04-01-19, 7347-04-01-20, 7347-04-01-21, 7347-04-01-22, 7347-04-01-23.

These results only pertain to this job and should not be used in the interpretation of any other job. This report is only complete in its entirety. Refer to the listing below of the pages included in a complete final report.

Sincerely,

A handwritten signature in cursive script that reads "Maureen Y. Haley".

Maureen Y. Haley
Asbestos Laboratory Manager
SanAir Technologies Laboratory

Final Report Includes:

- Cover Letter
- Analysis Pages
- Disclaimers and Additional Information

Sample conditions:

- 23 samples in Good condition.



SanAir ID Number
25021458
FINAL REPORT
4/4/2025 10:47:38 AM

Name: Helix Environmental Inc
Address: 1 Elizabeth Place
Suite 160
Dayton, OH 45417
Phone: 937-226-0650

Project Number: 7347
P.O. Number: Amended Report CAT 04.04.25
Project Name: App Architecture, Fire Station 15, 2801
Wayne Ave
Collected Date: 4/1/2025
Received Date: 4/2/2025 10:10:00 AM

Analyst: Hedge, Emily

Asbestos Bulk PLM EPA 600/R-93/116

SanAir ID / Description	Stereoscopic	Components		Asbestos Fibers
	Appearance	% Fibrous	% Non-fibrous	
7347-04-01-01 / 25021458-001 Coating on Concrete, 1st Fl, Men's Locker Room, N Wall	White Non-Fibrous Homogeneous		100% Other	None Detected
7347-04-01-02 / 25021458-002 Coating on Concrete, 1st Fl, Men's Locker Room, W Shower	White Non-Fibrous Homogeneous		100% Other	None Detected
7347-04-01-03 / 25021458-003 Coating on Concrete, 1st Fl, Men's Restroom, S Wall E	White Non-Fibrous Homogeneous		100% Other	None Detected
7347-04-01-04 / 25021458-004 Ceramic Tile Adhesive/ Grout, 1st Fl, Men's Restroom, S Wall, Ceramic Tile	Grey Non-Fibrous Homogeneous		100% Other	None Detected
7347-04-01-04 / 25021458-004 Ceramic Tile Adhesive/ Grout, 1st Fl, Men's Restroom, S Wall, Adhesive	Tan Non-Fibrous Homogeneous	2% Cellulose	98% Other	None Detected
7347-04-01-04 / 25021458-004 Ceramic Tile Adhesive/ Grout, 1st Fl, Men's Restroom, S Wall, Grout	Grey Non-Fibrous Homogeneous	2% Cellulose	98% Other	None Detected
7347-04-01-05 / 25021458-005 Ceramic Tile Adhesive/ Grout, 1st Fl, Men's Restroom, W, Ceramic Tile	Grey Non-Fibrous Homogeneous		100% Other	None Detected
7347-04-01-05 / 25021458-005 Ceramic Tile Adhesive/ Grout, 1st Fl, Men's Restroom, W, Adhesive	Tan Non-Fibrous Homogeneous	2% Cellulose	98% Other	None Detected
7347-04-01-05 / 25021458-005 Ceramic Tile Adhesive/ Grout, 1st Fl, Men's Restroom, W, Grout	Grey Non-Fibrous Homogeneous	2% Cellulose	98% Other	None Detected

Amended: Revised sample identification due to transcription error CAT 04.04.25

Analyst:

Approved Signatory:

Analysis Date: 4/2/2025

Date: 4/4/2025



SanAir ID Number
25021458
FINAL REPORT
4/4/2025 10:47:38 AM

Name: Helix Environmental Inc
Address: 1 Elizabeth Place
Suite 160
Dayton, OH 45417
Phone: 937-226-0650

Project Number: 7347
P.O. Number: Amended Report CAT 04.04.25
Project Name: App Architecture, Fire Station 15, 2801
Wayne Ave
Collected Date: 4/1/2025
Received Date: 4/2/2025 10:10:00 AM

Analyst: Hedge, Emily

Asbestos Bulk PLM EPA 600/R-93/116

SanAir ID / Description	Stereoscopic	Components		Asbestos Fibers
	Appearance	% Fibrous	% Non-fibrous	
7347-04-01-06 / 25021458-006 Ceramic Tile Adhesive/ Mortar, 1st Fl, Men's Restoom, W, Ceramic Tile	Grey Non-Fibrous Homogeneous		100% Other	None Detected
7347-04-01-06 / 25021458-006 Ceramic Tile Adhesive/ Mortar, 1st Fl, Men's Restoom, W, Adhesive	Tan Non-Fibrous Homogeneous	2% Cellulose	98% Other	None Detected
7347-04-01-06 / 25021458-006 Ceramic Tile Adhesive/ Mortar, 1st Fl, Men's Restoom, W, Mortar	White Non-Fibrous Homogeneous	2% Cellulose	98% Other	None Detected
7347-04-01-07 / 25021458-007 Ceramic Tile Adhesive/ Mortar, 1st Fl, Women's Restroom, Ceramic Tile	Grey Non-Fibrous Homogeneous		100% Other	None Detected
7347-04-01-07 / 25021458-007 Ceramic Tile Adhesive/ Mortar, 1st Fl, Women's Restroom, Adhesive	Tan Non-Fibrous Homogeneous	2% Cellulose	98% Other	None Detected
7347-04-01-07 / 25021458-007 Ceramic Tile Adhesive/ Mortar, 1st Fl, Women's Restroom, Mortar	White Non-Fibrous Homogeneous	2% Cellulose	98% Other	None Detected
7347-04-01-08 / 25021458-008 Ceramic Tile Adhesive/ Mortar, 1st Fl, Men's Restroom-Floor, Ceramic Tile	Grey Non-Fibrous Homogeneous		100% Other	None Detected
7347-04-01-08 / 25021458-008 Ceramic Tile Adhesive/ Mortar, 1st Fl, Men's Restroom-Floor, Adhesive	Tan Non-Fibrous Homogeneous	2% Cellulose	98% Other	None Detected
7347-04-01-08 / 25021458-008 Ceramic Tile Adhesive/ Mortar, 1st Fl, Men's Restroom-Floor, Mortar	Grey Non-Fibrous Homogeneous	2% Cellulose	98% Other	None Detected

Amended: Revised sample identification due to transcription error CAT 04.04.25

Analyst:

Approved Signatory:

Analysis Date: 4/2/2025

Date: 4/4/2025



SanAir ID Number
25021458
FINAL REPORT
4/4/2025 10:47:38 AM

Name: Helix Environmental Inc
Address: 1 Elizabeth Place
Suite 160
Dayton, OH 45417
Phone: 937-226-0650

Project Number: 7347
P.O. Number: Amended Report CAT 04.04.25
Project Name: App Architecture, Fire Station 15, 2801
Wayne Ave
Collected Date: 4/1/2025
Received Date: 4/2/2025 10:10:00 AM

Analyst: Hedge, Emily

Asbestos Bulk PLM EPA 600/R-93/116

SanAir ID / Description	Stereoscopic	Components		Asbestos Fibers
	Appearance	% Fibrous	% Non-fibrous	
7347-04-01-09 / 25021458-009 Ceramic Tile Adhesive/ Mortar, 1st Fl, Door to Women's, Ceramic Tile	Grey Non-Fibrous Homogeneous		100% Other	None Detected
7347-04-01-09 / 25021458-009 Ceramic Tile Adhesive/ Mortar, 1st Fl, Door to Women's, Adhesive	Tan Non-Fibrous Homogeneous	2% Cellulose	98% Other	None Detected
7347-04-01-09 / 25021458-009 Ceramic Tile Adhesive/ Mortar, 1st Fl, Door to Women's, Mortar	Grey Non-Fibrous Homogeneous	2% Cellulose	98% Other	None Detected
7347-04-01-10 / 25021458-010 Sink Soundproofing, 1st Fl, Kitchen Area, Under SS Sink	Black Non-Fibrous Homogeneous	2% Cellulose	98% Other	None Detected
7347-04-01-11 / 25021458-011 Sink Soundproofing, 1st Fl, Kitchen Area, Under SS Sink	Black Non-Fibrous Homogeneous	2% Cellulose	98% Other	None Detected
7347-04-01-12 / 25021458-012 Interior Caulk, 1st Fl, E Entrance Door, Interior Door S	Brown Non-Fibrous Homogeneous	2% Cellulose	98% Other	None Detected
7347-04-01-13 / 25021458-013 Interior Caulk, Entrance E Wall, East Side	Brown Non-Fibrous Homogeneous	2% Cellulose	98% Other	None Detected
7347-04-01-14 / 25021458-014 Pipe Penetration Caulk, 2nd Fl, Tower, W Wall	Grey Non-Fibrous Homogeneous	5% Cellulose	93% Other	2% Chrysotile
7347-04-01-15 / 25021458-015 Pipe Penetration Caulk, 2nd Fl, Tower, W Wall	Grey Non-Fibrous Homogeneous	5% Cellulose	93% Other	2% Chrysotile
7347-04-01-16 / 25021458-016 Pipe Penetration Mortar, Basement, Tower, W Wall	Grey Non-Fibrous Homogeneous	2% Cellulose	98% Other	None Detected

Amended: Revised sample identification due to transcription error CAT 04.04.25

Analyst:

Approved Signatory:

Analysis Date: 4/2/2025

Date: 4/4/2025



SanAir ID Number
25021458
FINAL REPORT
4/4/2025 10:47:38 AM

Name: Helix Environmental Inc
Address: 1 Elizabeth Place
Suite 160
Dayton, OH 45417
Phone: 937-226-0650


Project Number: 7347
P.O. Number: Amended Report CAT 04.04.25
Project Name: App Architecture, Fire Station 15, 2801
Wayne Ave
Collected Date: 4/1/2025
Received Date: 4/2/2025 10:10:00 AM


Analyst: Hedge, Emily

Asbestos Bulk PLM EPA 600/R-93/116

SanAir ID / Description	Stereoscopic	Components		Asbestos Fibers
	Appearance	% Fibrous	% Non-fibrous	
7347-04-01-17 / 25021458-017 Pipe Penetration Mortar, Basement, Tower, S Wall	Grey Non-Fibrous Homogeneous	2% Cellulose	98% Other	None Detected
7347-04-01-18 / 25021458-018 Exterior Caulk, 2nd Fl, Roof, NW Central Area	Grey Non-Fibrous Homogeneous	2% Cellulose	98% Other	None Detected
7347-04-01-19 / 25021458-019 Exterior Caulk, 3rd Fl, Roof, N Center at Tower	Grey Non-Fibrous Homogeneous	2% Cellulose	98% Other	None Detected
7347-04-01-20 / 25021458-020 Exterior Caulk, 1st Fl Exterior, NW Windows S Edge	Black Non-Fibrous Homogeneous	2% Cellulose	98% Other	None Detected
7347-04-01-21 / 25021458-021 Exterior Caulk, 1st Fl Exterior, S Windows East Edge	Grey Non-Fibrous Homogeneous	2% Cellulose	98% Other	None Detected
7347-04-01-22 / 25021458-022 Exterior Caulk, 1st Fl Exterior, S Windows West Edge	Grey Non-Fibrous Homogeneous	2% Cellulose	98% Other	None Detected
7347-04-01-23 / 25021458-023 Exterior Caulk, 1st Fl Exterior, NW Windows S Edge	Black Non-Fibrous Homogeneous	2% Cellulose	98% Other	None Detected

Amended: Revised sample identification due to transcription error CAT 04.04.25

Analyst: 

Approved Signatory: 

Analysis Date: 4/2/2025

Date: 4/4/2025

Disclaimer and Additional Information

This report is the sole property of the client named on the SanAir Technologies Laboratory, Inc. (SanAir) chain-of-custody (COC). Results in the report are confidential information intended only for the use by the client named on the COC. Neither results nor reports will be discussed with or released to any third party without our client's written permission to maintain client confidentiality. The final report cannot be reproduced, except in full, without written authorization from SanAir to assure that parts of the report are not taken out of context. This report and any information contained within shall not be edited, altered, or modified in any way by any persons or agencies receiving, viewing, distributing, or otherwise possessing a copy of this final report. The laboratory reserves the right to perform amendments to any finalized report, of which shall supersede and make obsolete any previous editions. Such changes, modifications, additions, or deletions shall be effective immediately upon notice thereof, which may be given by means including, but not limited to, posting on the SanAir client portal website, electronic or conventional mail, or by any other means. The information provided in this report applies only to the samples submitted in the condition they were received at the laboratory and is relevant only for the date, time, and location of sampling. Samples were received in good condition unless otherwise noted on the report. The accuracy of the results is dependent upon the client's sampling procedure and information provided to the laboratory by the client on the COC, which includes the project name, project number, P.O. number, sample collection dates, special instructions, samples collected by, sample numbers, sample identifications/location, sample type, selected analysis type, and total area or volume that may affect the validity of the results. SanAir assumes no responsibility for the sampling procedure and will provide evaluation reports based solely on the sample and information provided by the client. SanAir assumes no responsibility or liability for the manner in which results are used or interpreted. This report does not constitute and shall not be used to claim product, process, system, or person certification, approval, or endorsement by NVLAP, NIST, NELAC, AIHA LAP, LLC or any other agency of the U.S. government; all or some tests contained in this report may not be accredited by every local, state, and federal regulatory agency. Refer to the SanAir website at www.sanair.com for copies of current certificates and scopes of various accreditations, certifications, and licenses or contact the laboratory at iaq@sanair.com for inquiries regarding the status or scope of an accreditation or certification.

Fibers smaller than 5-microns cannot be seen with this method due to scope limitations. Polarized- light microscopy is not consistently reliable in detecting asbestos in floor covering and similar non-friable organically bound materials. Quantitative transmission electron microscopy is currently the only method that can be used to determine if this material can be considered or treated as non-asbestos containing. Samples are held for a period of 60 days.

Asbestos Accreditations, Certifications, and Licenses

National Voluntary Laboratory Accreditation Program (NVLAP) Lab Code 600227-0

State of Connecticut Department of Public Health Registration Number: PH-0817

State of Rhode Island Department of Health, Certification Number: PLM00144, TEM00144

State of West Virginia Bureau for Public Health, Analytical Laboratory Number: LT000637

Texas Department of State Health Services License Number: 300510

HELIX

ENVIRONMENTAL, INC.

1 Elizabeth Place, Suite 160 • Dayton, Ohio 45417-3445
Phone: (937) 226-0650 Fax: (937) 226-0653 Email: helix@helixenv.com

RUSH - YES OR NO ☒

LABORATORY: 25621458
DATE SAMPLED: 4/1/25
DATE REQUIRED: 24 APR 24T

JOB NO./LOCATION: 7347 | Dayton, OH

CLIENT: HRP Architectural

BUILDING: Fire Station 15, 2801 Wayne Avenue

INSPECTOR: Ben Freehling, BA Freehling

JOB NUMBER: 7347

BULK SAMPLE DATA SHEET

ANALYSES REQUESTED:

Asbestos PLM

HELIX SAMPLE ID NUMBER	AMOUNT	REPRESENTATIVE SAMPLE LOCATION	MATERIAL DESCRIPTION	FRAGILE/ NON	CONDITION	COMMENTS
7347-04-01-01	200 ST	1st Fl, Men's Locker Room, N Wall	White Coating on Concrete Block	N	G	
7347-04-01-02	—	1st Fl, Men's Locker Room, W Wall Corner	White Coating on Concrete Block	N	G	
7347-04-01-03	—	1st Fl, Men's Restroom, S Wall	White Coating on Concrete Block	N	G	
7347-04-01-04	600 ST	1st Fl, Men's Restroom, N Wall of Toilet Area	Ceramic Tile Adhesive/Grout	N	F	Baselined
7347-04-01-05	—	1st Fl, Men's Restroom, W Shower	Ceramic Tile Adhesive/Grout	N	G	Baselined
7347-04-01-06	200 ST	1st Fl, Men's Restroom, W Wall Corner	Ceramic Tile Adhesive/Grout	N	G	Wall of Shower
7347-04-01-07	—	1st Fl, Women's Restroom, Shower	Ceramic Tile Adhesive/Grout	N	G	Wall of Shower
7347-04-01-08	600 ST	1st Fl, Men's Restroom, E Wall of Door	Ceramic Tile Adhesive/Grout	N	G	Floor
7347-04-01-09	—	1st Fl, Door to Women's Restroom/Men's Restroom, SW	Ceramic Tile Adhesive/Grout	N	G	Floor
7347-04-01-10	60 ST	1st Fl, Kitchen Area, under sink	Black Sink Stand	N	G	
7347-04-01-11	—	1st Fl, Kitchen Area, under sink	Black Sink Stand	N	G	
7347-04-01-12	300 ST	1st Fl, E Entrance Door, under door	Black Sink Stand	N	G	300 CF X 0.25" x 6.5"

THIS IS A CHAIN OF CUSTODY DOCUMENT. PLEASE COMPLETE, SIGN, AND DATE. PLEASE RETURN ORIGINAL TO HELIX ENVIRONMENTAL, INC.

REC'D 1	Received by: <i>[Signature]</i>	Company: Helix Env. Inc.	Date/Time: 4/1/2025	REC'D 3	Relinquished by: RMB	Company: APR	Date/Time: 10/10/2025
REC'D 2	Received by:	Company:	Date/Time:	REC'D 4	Relinquished by:	Company:	Date/Time:

HELIXXXXX ENVIRONMENTAL, INC.

1 Elizabeth Place, Suite 160 • Dayton, Ohio 45417-3445
Phone: (937) 226-0650 Fax: (937) 226-0653 Email: helix@helixenv.com

25021458

LABORATORY:

DATE SAMPLED: 7/10/25

RUSH - YES OR NO

DATE REQUIRED: 24 APR 24T

JOB NO./LOCATION: 7347 Dayton, OH

CLIENT: APR Architecture

BUILDING: Fire Station

INSPECTOR: Ben Frederick, R. A. Frederick

JOB NUMBER: 7347

BULK SAMPLE DATA SHEET

ANALYSES REQUESTED:

Asbestos PCM

HELIX SAMPLE ID NUMBER	AMOUNT	REPRESENTATIVE SAMPLE LOCATION	MATERIAL DESCRIPTION	FRAGILE/ NON	CONDITION	COMMENTS
7347-04-01-13	—	Roof, Interior, W. Wall, East Side	Interior, Roof, W. Wall, East Side	N	G	
7347-04-01-14	2 SF	2nd Fl., Tower, W. Wall	Pipe Penetration Caulk	N	F	
7347-04-01-15	—	2nd Fl., Tower, W. Wall	Pipe Penetration Caulk	N	F	
7347-04-01-16	6 SF	Basement, Tower, W. Wall	Pipe Penetration Caulk	N	G	
7347-04-01-17	—	Basement, Tower, S. Wall	Pipe Penetration Caulk	N	G	
7347-04-01-18	50+ LF	2nd Fl., Roof, NW Wall	Gray Exterior Caulk	N	F	50 x 1" = 56
7347-04-01-19	—	3rd Fl., Roof, NW Wall	Gray Exterior Caulk	N	G	
7347-04-01-20	12 LF	1st Fl., Extension, NW Windows	Black Exterior Caulk	N	G	Replacement 12 x 0.25"
7347-04-01-21	—	1st Fl., Extension, SW Windows	Gray Exterior Caulk	N	F	
7347-04-01-22	—	1st Fl., Extension, S Windows	Gray Exterior Caulk	N	F	
7347-04-01-23	—	1st Fl., Extension, West Edge	Black Exterior Caulk	N	G	
7347-04-01-24	—	1st Fl., Extension, NW Windows	Black Exterior Caulk	N	G	

THIS IS A CHAIN OF CUSTODY DOCUMENT. PLEASE COMPLETE, SIGN, AND DATE. PLEASE RETURN ORIGINAL TO HELIX ENVIRONMENTAL, INC.

REC'D 1	Received by: <i>[Signature]</i>	Company: <i>Helix Env. Inc.</i>	Date/Time: 7/10/2025	REC'D 2	Received by: <i>[Signature]</i>	Company: <i>Helix Env. Inc.</i>	Date/Time: 7/10/2025
REC'D 3	Relinquished by: <i>RM</i>	Company: <i>APR</i>	Date/Time: 02/2025	REC'D 4	Relinquished by: <i>APR</i>	Company: <i>APR</i>	Date/Time: 02/2025

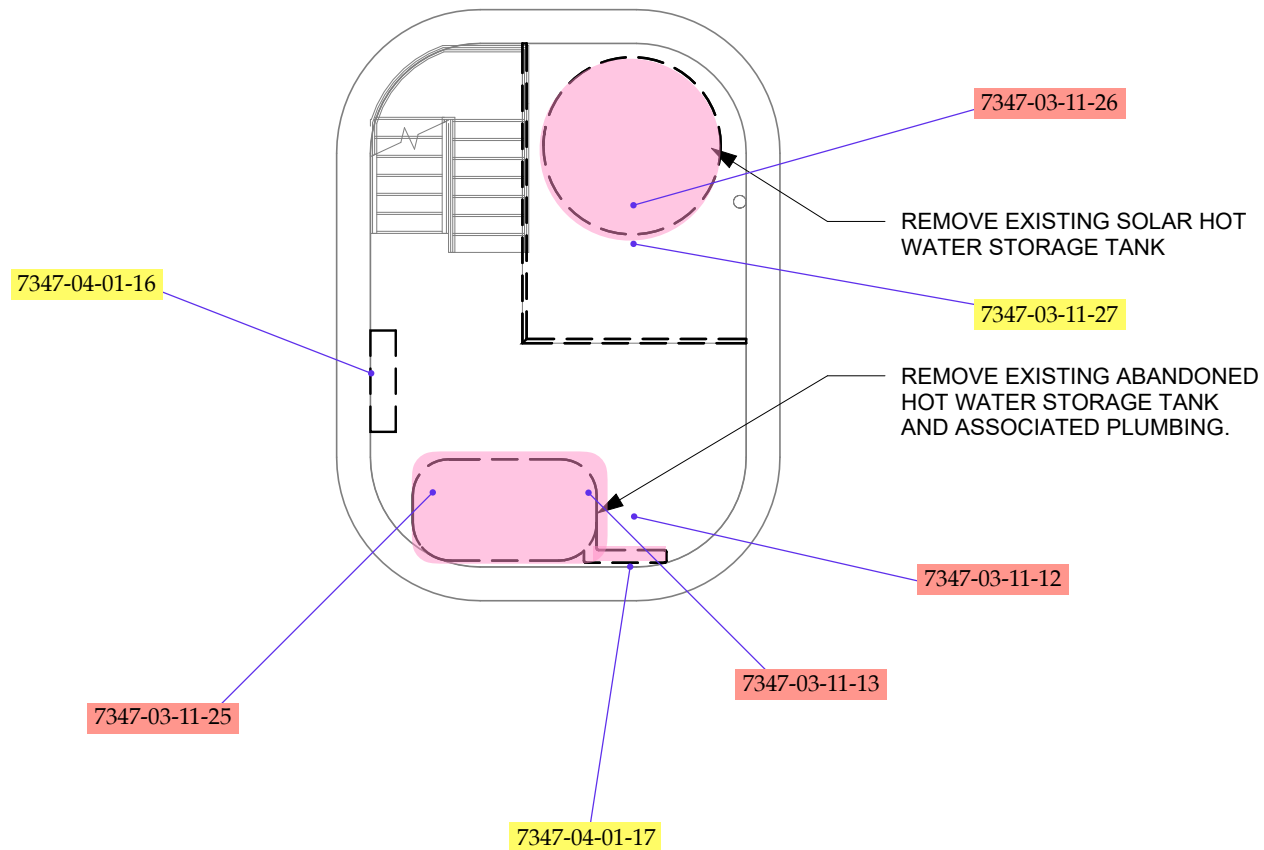
LEGEND

- Asbestos-Containing Material
- Non Asbestos-Containing Material
- Asbestos-Containing Material (Insulation, Flooring, Etc.)
- Assumed Asbestos-Containing Material Present
(Electrical Insulators, Fire Doors, Etc.)

ASBESTOS SAMPLE LOCATIONS,
BASEMENT, FIRE STATION 156,
2801 WAYNE AVENUE,
DAYTON, OH

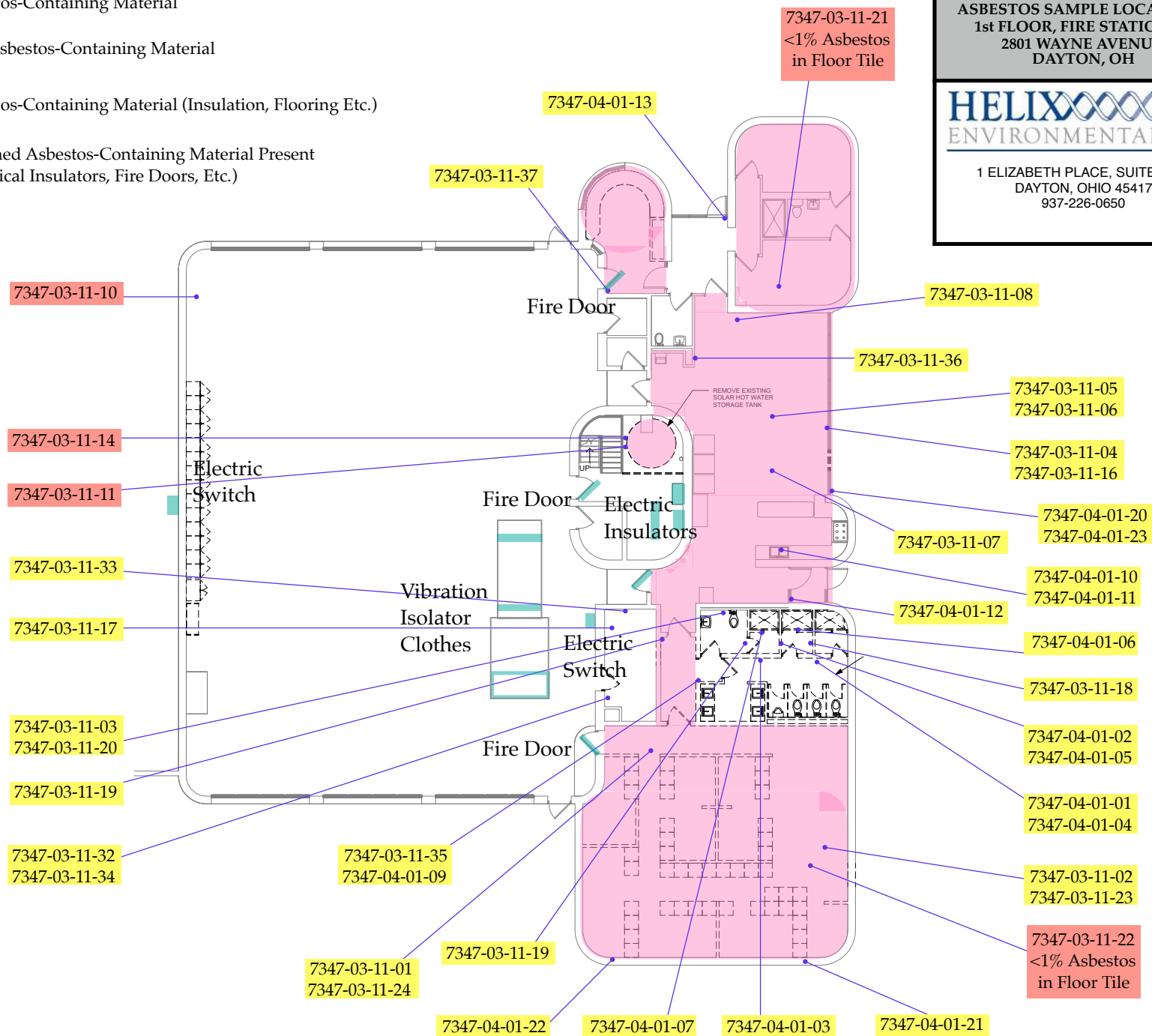
HELIX ENVIRONMENTAL, INC.

1 ELIZABETH PLACE, SUITE 160H
DAYTON, OHIO 45417
937-226-0650



LEGEND

- Asbestos-Containing Material
- Non Asbestos-Containing Material
- Asbestos-Containing Material (Insulation, Flooring Etc.)
- Assumed Asbestos-Containing Material Present (Electrical Insulators, Fire Doors, Etc.)



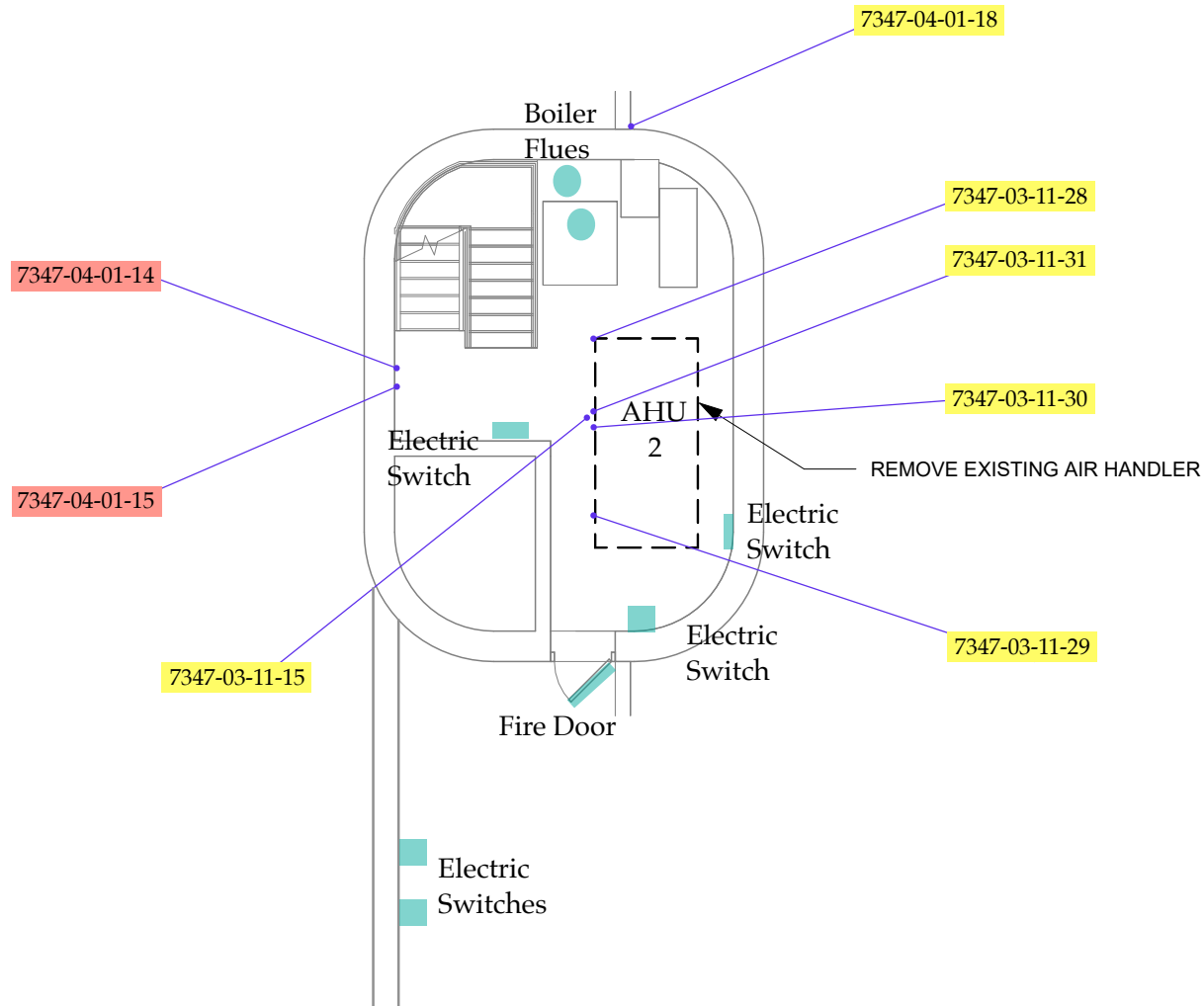
LEGEND

- Asbestos-Containing Material
- Non Asbestos-Containing Material
- Asbestos-Containing Material (Insulation, Flooring Etc.)
- Assumed Asbestos-Containing Material Present
(Electrical Insulators, Fire Doors, Etc.)

ASBESTOS SAMPLE LOCATIONS,
2nd FLOOR, FIRE STATION 15,
2801 WAYNE AVENUE,
DAYTON, OH

HELIX ENVIRONMENTAL, INC.

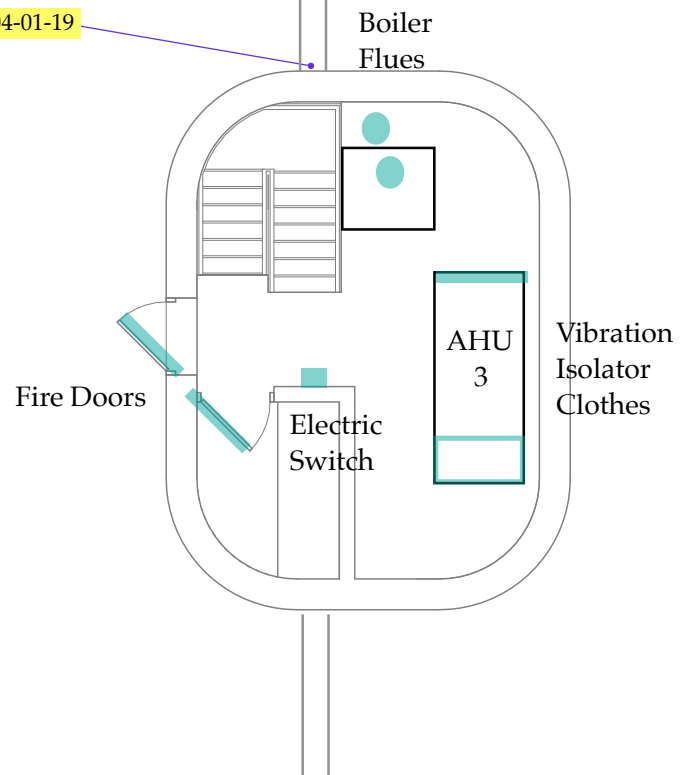
1 ELIZABETH PLACE, SUITE 160H
DAYTON, OHIO 45417
937-226-0650



LEGEND

- Asbestos-Containing Material
- Non Asbestos-Containing Material
- Asbestos-Containing Material (Insulation, Flooring Etc.)
- Assumed Asbestos-Containing Material Present
(Electrical Insulators, Fire Doors, Etc.)

7347-04-01-19



ASBESTOS SAMPLE LOCATIONS,
3rd FLOOR, FIRE STATION 156,
2801 WAYNE AVENUE,
DAYTON, OH

HELIX ENVIRONMENTAL, INC.

1 ELIZABETH PLACE, SUITE 160H
DAYTON, OHIO 45417
937-226-0650



Photo 01- Sample# 7347-03-11-01, No Asbestos Detected in 2' x 2' Ceiling Tile



Photo 02- Sample# 7347-03-11-02, No Asbestos Detected in 2' x 2' Ceiling Tile



Photo 03- Sample# 7347-03-11-03, No Asbestos Detected in 2' x 2' Ceiling Tile



Photo 04- Sample# 7347-03-11-04, No Asbestos Detected in 2' x 2' Ceiling Tile



Photo 05- Sample# 7347-03-11-05, No Asbestos Detected in 2' x 2' Ceiling Tile



Photo 06- Sample# 7347-03-11-06, No Asbestos Detected in 2' x 2' Ceiling Tile



Photo 07- Sample# 7347-03-11-07, No Asbestos Detected in 2' x 2' Ceiling Tile



Photo 08- Sample# 7347-03-11-08, No Asbestos Detected in Sheet Flooring and Green Mastic



Photo 09- Sample# 7347-03-11-09, No Asbestos Detected in Sheet Flooring and Green Mastic



Photo 10- Sample# 7347-03-11-10, 1.1% Chrysotie Asbestos Detected in Grey Pipe Insulation Sealant

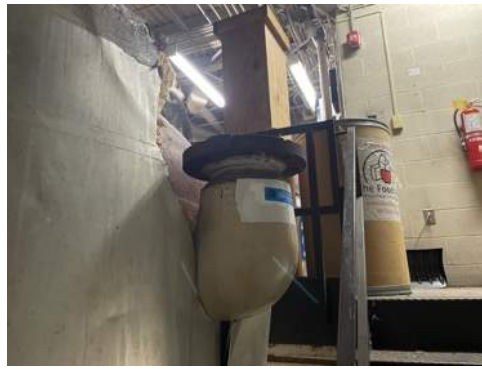


Photo 11- Sample# 7347-03-11-11, 2.7% Chrysotie Asbestos Detected in Tan Pipe Insulation Sealant



Photo 12- Sample# 7347-03-11-12, 1.6% Chrysotie Asbestos Detected in Tan Pipe Insulation Sealant



Photo 13- Sample# 7347-03-11-13, 10% Chrysotie Asbestos Detected in Grey Tank Insulation Sealant



Photo 14- Sample# 7347-03-11-14, 10% Chrysotie Asbestos Detected in Grey Tank Insulation Sealant



Photo 15- Sample# 7347-03-11-15, No Asbestos Detected in Tan Pipe Insulation Sealant



Photo 16- Sample# 7347-03-11-16, No Asbestos Detected in Drywall and Joint Compound



Photo 17- Sample# 7347-03-11-17, No Asbestos Detected in Drywall and Joint Compound



Photo 18- Sample# 7347-03-11-18, No Asbestos Detected in Stucco and Base Layer



Photo 19- Sample# 7347-03-11-19, No Asbestos Detected in Stucco and Base Layer



Photo 20- Sample# 7347-03-11-20, No Asbestos Detected in Stucco



Photo 21- Sample# 7347-03-11-21, 0.6% Chrysotile Asbestos Detected in 12"x12" Grey Streaked Floor Tile, No Asbestos in Black Mastic



Photo 22- Sample# 7347-03-11-21, 0.4% Chrysotile Asbestos Detected in 12"x12" Grey Streaked Floor Tile, No Asbestos in Black Mastic



Photo 23- Sample# 7347-03-11-23, No Asbestos Detected in Drywall and Joint Compound



Photo 24- Sample# 7347-03-11-24, No Asbestos Detected in Drywall and Joint Compound



Photo 25- Sample# 7347-03-11-25, 10% Chrysotile Asbestos Detected in Grey Tank Insulation Sealant



Photo 26- Sample# 7347-03-11-26, 10% Chrysotile Asbestos Detected in Grey Tank Insulation Sealant



Photo 27- Sample# 7347-03-11-27, No Asbestos Detected in Tan Pipe Insulation Sealant

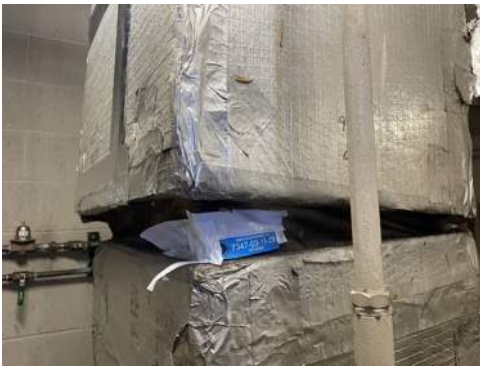


Photo 28- Sample# 7347-03-11-28, No Asbestos Detected in Vibration Isolator Cloth



Photo 29- Sample# 7347-03-11-29, No Asbestos Detected in Vibration Isolator Cloth



Photo 30- Sample# 7347-03-11-30, No Asbestos Detected in Black Sweat Wrap



Photo 31- Sample# 7347-03-11-31, No Asbestos Detected in Black Sweat Wrap



Photo 32- Sample# 7347-03-11-32, No Asbestos Detected in 4" Brown Cove Base and Mastic



Photo 33- Sample# 7347-03-11-33, No Asbestos Detected in Brown Cove Base Mastic

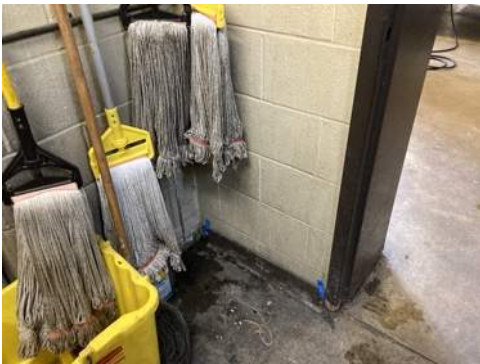


Photo 34- Sample# 7347-03-11-34, No Asbestos Detected in Brown Cove Base Mastic



Photo 35- Sample# 7347-03-11-35, No Asbestos Detected in 6" Cove Base and Mastic



Photo 36- Sample# 7347-03-11-36, No Asbestos Detected in 6" Cove Base and Mastic



Photo 37- Sample# 7347-03-11-37, No Asbestos Detected in 4" Cove Base and Mastic



Photo 38- Sample# 7347-04-01-01, No Asbestos Detected in White Concrete Block Coating



Photo 39- Sample# 7347-04-01-02, No Asbestos Detected in White Concrete Block Coating



Photo 40- Sample# 7347-04-01-05, No Asbestos Detected in Ceramic Tile, Tan Adhesive, and Grout



Photo 41- Sample# 7347-04-01-05, No Asbestos Detected in Ceramic Tile, Tan Adhesive, and Grout



Photo 42- Sample# 7347-04-01-06, No Asbestos Detected in Ceramic Tile, Tan Adhesive, and Grout



Photo 43- Sample# 7347-04-01-07, No Asbestos Detected in Ceramic Tile, Tan Adhesive, and Grout



Photo 44- Sample# 7347-04-01-08, No Asbestos Detected in Ceramic Tile, Tan Adhesive, and Grout



Photo 45- Sample# 7347-04-01-09, No Asbestos Detected in Ceramic Tile, Tan Adhesive, and Grout



Photo 46- Sample# 7347-04-01-10, No Asbestos Detected in Sink Soundproofing



Photo 47- Sample# 7347-04-01-11, No Asbestos Detected in Sink Soundproofing



Photo 48- Sample# 7347-04-01-12, No Asbestos Detected in Brown Interior Caulk



Photo 49- Sample# 7347-04-01-13, No Asbestos Detected in Brown Interior Caulk



Photo 50- Sample# 7347-04-01-14, 2% Chrysotile Asbestos Detected in Pipe Penetration Caulk



Photo 51- Sample# 7347-04-01-15, 2% Chrysotile Asbestos Detected in Pipe Penetration Caulk



Photo 52- Sample# 7347-04-01-16, No Asbestos Detected in Pipe Penetration Mortar



Photo 53- Sample# 7347-04-01-17, No Asbestos Detected in Pipe Penetration Mortar



Photo 54- Sample# 7347-04-01-18, No Asbestos Detected in Grey Exterior Caulk



Photo 55- Sample# 7347-04-01-19, No Asbestos Detected in Grey Exterior Caulk



Photo 56- Sample# 7347-04-01-20, No Asbestos Detected in Black Exterior Caulk



Photo 57- Sample# 7347-04-01-21, No Asbestos Detected in Grey Exterior Caulk



Photo 58- Sample# 7347-04-01-22, No Asbestos Detected in Grey Exterior Caulk



Photo 59- 1st Floor, West Vehicle Bay, Northeast Door, All Fire Doors are Assumed to Contain Asbestos



Photo 60- 1st Floor, West Vehicle Bay, Southeast Door, All Fire Doors are Assumed to Contain Asbestos



Photo 61- 3rd Floor, Roof Access Door, Visible Insulation, All Insulated Doors are Assumed to Contain Asbestos



Photo 62- 1st floor, West Vehicle Bay, Southeast Area, All Vibration Isolator Cloths are Assumed to Contain Asbestos, Unless confirmed not to



Photo 63- 1st Floor, Central Tower, East Wall, Switch Gear, All Electrical Insulators are Assumed to Contain Asbestos



Photo 64- 1st Floor, Central Tower, East Wall, Switch and Circuit Breaker, All Electrical Insulators are Assumed to Contain Asbestos



Photo 65- 1st Floor, Central Tower, SE Area, Circuit Breakers, All Electrical Insulators are Assumed to Contain Asbestos



Photo 66- 1st Floor, Central Tower, SE Area, Circuit Breakers, All Electrical Insulators are Assumed to Contain Asbestos



Photo 67- 2nd Floor, Central Tower, SE Area, Safety Switches, All Electrical Insulators are Assumed to Contain Asbestos



Photo 68- 2nd Floor, Rooftop, S Central Area, Safety Switches, All Electrical Insulators are Assumed to Contain Asbestos



Photo 69- Exterior, West Side, Central Area, Safety Switch, All Electrical Insulators are Assumed to Contain Asbestos



Photo 70- Boiler, Boiler Exhaust Flue is Assumed to Contain Asbestos



Photo 71- Boiler, Boiler Exhaust Flue is Assumed to Contain Asbestos

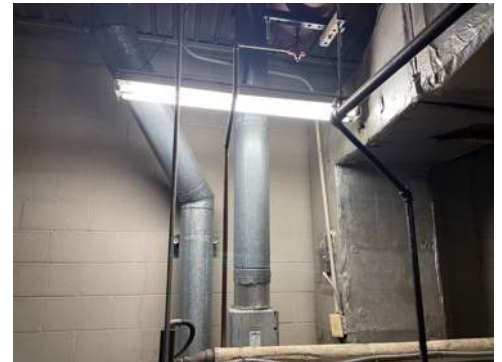


Photo 72- Boiler, Boiler Exhaust Flue is Assumed to Contain Asbestos



Photo 73- 2nd Floor, Rooftop, All Bituminous Roofing is Assumed to Contain Asbestos



Photo 74- 3rd Floor, Rooftop, All Bituminous Roofing is Assumed to Contain Asbestos



Photo 75- 3rd Floor, Hot Water Heater, Fiberglass Insulation



Photo 76- No Visible Hard Pipe Fittings, All Pipe Insulation Sealant is Confirmed to Contain Greater than 1% Asbestos



Photo 77- No Visible Hard Pipe Fittings, All Pipe Insulation Sealant is Confirmed to Contain Greater than 1% Asbestos



Photo 78- 1st Floor, NE Bathroom, Ceramic Tile over <1% Grey 12" x 12" Floor Tile



Photo 79- 1st Floor, East Dining Room, Sheet Flooring over <1% Grey 12" x 12" Floor Tile



Photo 80- 1st Floor, East Central Janitor's Closet, No Reflector Paper



Photo 81- Inside of AHU 2, No Suspect Material



Photo 82- Exterior, Northeast Corner of
Fire Station 15



March 20, 2025

Mr. Curt Sparks, Associate AIA, LEED GA
App Architecture
615 Woodside Drive
Englewood, Ohio 45322

Telephone (937) 836-8898 ext. 110

**RE: Pre-Renovation Preliminary Lead-Containing Paint Inspection of Fire Station
15, 2801 Wayne Avenue, Dayton, Ohio, March 11, 2025.
Helix Project No. 7347.**

Dear Mr. Sparks:

App Architecture recently contracted with Helix Environmental, Inc. to perform a pre-renovation preliminary lead-containing paint inspection of the accessible portions of the Fire Station 15 located at 2801 Wayne Avenue, Dayton, Ohio. The inspection was necessary to determine if lead-containing paint materials were present so that plans could be made to remove them in accordance with current regulatory requirements prior to a planned renovation project at the building. This letter report summarizes the results of the inspection performed on March 11, 2025 and the analytical results of samples collected on that date. A companion report documents the asbestos inspection of the fire station building.

INSPECTION AND ANALYTICAL PROCEDURES

Mr. Ralph Froehlich, CIH, CSP, QEP performed preliminary lead paint film sampling at representative locations in the accessible renovation areas at the Fire Station 15 building, 2801 Wayne Avenue in Dayton, Ohio. Mr. Ralph A. Froehlich is a Certified Industrial Hygienist with more than thirty years experience in the fields of occupational and environmental health, and is certified by the Ohio Department of Health as an Asbestos Hazard Evaluation Specialist and Asbestos Abatement Project Designer (Certification Nos. ES3074 and PD60148, respectively).

Painted surfaces will be disturbed during the planned renovation, and were assumed to contain lead given the ages of the building (approximately 50 years). Helix Environmental, Inc. collected fourteen (14) paint film samples in representative locations to evaluate the accuracy of this assumption.

Paint film samples were collected using cleaned hand tools and packaged in labeled zip-lock plastic bags. The sample bags were placed into a larger zip-lock bag, with the original sample data/chain-of-custody and analytical request forms. Helix Environmental, Inc. retained copies of these forms.

The samples were shipped by overnight courier to SanAir Technologies Laboratory, Inc., a National Voluntary Laboratory Accreditation Program (NVLAP) and Ohio Certified Professional accredited environmental lead laboratory, where they were analyzed for lead in accordance with the U.S. Environmental Protection Agency's SW846/M 050B/7000B Method. Under this method, the limit of detection for lead is 10 $\mu\text{g}/\text{sample}$.

SanAir Technologies Laboratory, Inc. maintains accreditation from the American Industrial Hygiene Association as an environmental lead laboratory and has received accreditation through successful participation in the NIST National Voluntary Laboratory Accreditation Program (NVLAP) for bulk asbestos and as an environmental microbiology laboratory. AIHA-accredited laboratories are scrutinized on a regular basis to ensure that personnel, equipment, facilities and data are maintained. In addition, AIHA-accredited laboratories have well-developed assurance/quality control programs to ensure that analytical results accurately reflect conditions present during the sampling periods.

APPLICABLE STANDARDS

Lead

The U. S. Environmental Protection Agency (EPA) has established regulations that identify paint with lead content in excess of 0.5 percent as "Lead-Based Paint", as determined by chemical testing methods or more than 1.0 mg/cm² as determined by approved X-Ray Fluorescence monitor. These regulations establish required notification, removal techniques, and disposal of Lead-Based Paint. The Ohio Department of Health has established equivalent regulations for Ohio (Ohio Administrative Code 3745-20, 22).

The Occupational Safety and Health Administration (OSHA) has promulgated an eight-hour Time-Weighted Average (TWA) Permissible Exposure Limit of 0.050 mg/m³ (50 µg/m³) for airborne lead exposures (29 CFR 1910.1025, 29 CFR 1926.62). An Action Level of 0.030 mg/m³ (30 µg/m³) has also been included with the standards. Lead-containing materials are defined as those that contain any detectable concentration of lead. These regulations include complex requirements for Lead-Based Paint abatement. OSHA requires employers to monitor employee exposures to lead and to protect worker health until lead exposure levels are measured by requiring lead training, blood lead testing, respiratory protection, protective clothing, hand-washing facility and clean change areas (29 CFR 1926.62(d)(2)(v)).

The U.S. Environmental Protection Agency (EPA) has established clearance criteria for for lead-based paint abatement projects in residences, child education facilities and child education facilities (40 CFR 763.91).

The American Conference of Governmental Industrial Hygienists (ACGIH) recommends an airborne eight-hour TWA Threshold Limit Value of 0.050 mg/m³ (ACGIH, 2024 *TLVs and BEIs*). ACGIH TLVs denote concentrations and conditions to which it is believed that nearly all workers may be repeatedly exposed day after day without adverse effect.

The National Institute for Occupational Safety and Health (NIOSH) recommends and eight-hour TWA Recommended Exposure Limit of 0.050 mg/m³ (NIOSH *Pocket Guide to Chemical Hazards*, 2007). NIOSH also identifies 100 mg/m³ as the Immediately Dangerous to Life or Health concentration for lead.

ANALYTICAL RESULTS**TABLE 1: LEAD-CONTENT OF PAINT AT FIRE STATION 15, 2801 WAYNE AVENUE, DAYTON, OHIO, COLLECTED MARCH 11, 2025. HELIX PROJECT NO. 7347.**

Helix Sample No. Lab Sample No.	Sample Location	Description	Lead Concentration (% Lead)
7347-03-11-61 25016382-1	1st Floor, Central Tower, South Central Area, 5' Ht.	Beige Paint on Metal Ductwork	ND <0.010
7347-03-11-62 25016382-2	1st Floor, Central Tower, Northeast Area, On Top of Solar Hot Water Storage Tank	Red Paint on Solar Hot Water Storage Tank	0.648
7347-03-11-63 25016382-3	1st Floor, Central Tower, Northwest Area, Stairwell, Stair Riser	Brown over Blue Paint on Metal	0.062
7347-03-11-64 25016382-4	1st Floor, West Vehicle Bay, South Central Area, On Concrete Floor	Yellow Paint Line on Concrete Floor	0.138
7347-03-11-65 25016382-5	1st Floor, West Vehicle Bay, East Wall, North Area, 3' Ht.	Beige Paint on Concrete Block Wall	ND <0.009
7347-03-11-66 25016382-6	1st Floor, West Vehicle Bay, East Wall, North Area, Hose Valve Access Trim, 3' Ht.	Beige Paint on Metal	ND <0.009
7347-03-11-67 25016382-7	1st Floor, Southeast Central Men's Restroom, Southeast Stall, West Wall, 3' Ht.	Orange Paint on Metal Divider Wall	1.049
7347-03-11-68 25016382-8	1st Floor, Southeast Central Men's Restroom, West Stall, West Wall of Urinal, 3' Ht.	Beige Paint on Concrete Block Wall	ND <0.009
7347-03-11-69 25016382-9	1st Floor, North Central Watch Room, West Wall, South Area, By Door to West Vehicle Bay, 4' Ht.	Orange Paint on Concrete Block Wall	ND <0.009
7347-03-11-70 25016382-10	1st Floor, North Central Restroom, East Wall, North Area, 4' Ht.	Terracotta Paint on Drywall Wall	0.010
7347-03-11-71 25016382-11	1st Floor, Break Room, West Wall, North Area, 4' Ht.	Grey Paint on Drywall Wall	ND <0.009
7347-03-11-72 25016382-12	Exterior, South Side, Central Area, At Entrance to West Vehicle Bay, 5' Ht.	Red, Green and Brown Paint on Metal Door	ND <0.008

Ohio Dept. of Health LEAD-BASED PAINT
US EPA LEAD-BASED PAINT
OSHA REGULATED LEAD-CONTAINING MATERIAL

>0.5%
>0.5%
Detectable

Mr. Curt Sparks, Associate AIA

March 20, 2025

Page 5

TABLE 1 (CONTINUED): LEAD CONTENT OF PAINT AT FIRE STATION 15, 2801 WAYNE AVENUE, DAYTON, OHIO, COLLECTED MARCH 11, 2025. HELIX PROJECT NO. 7347.

Helix Sample No. Lab Sample No.	Sample Location	Description	Lead Concentration (% Lead)
7347-03-11-73 25016382-13	Exterior, North Side, West Area, Center Overhead Door, West Side, At Bottom	Red Paint on Metal	ND <0.010
7347-03-11-74 25016382-14	Exterior, North Side, Central Area, At West Outside Wall of Watch Room, 5' Ht.	Yellow Paint on Metal Telephone Box	ND <0.010

Ohio Dept. of Health LEAD-BASED PAINT

US EPA LEAD-BASED PAINT

OSHA REGULATED LEAD-CONTAINING MATERIAL

>0.5%

>0.5%

Detectable

DISCUSSION AND RECOMMENDATIONS

Since the building was built prior to 1978 when lead was banned for interior coatings, it was assumed that all paint present in the renovation area contains detectable levels of lead. Demolition contractors which will disturb assumed lead-containing painted surfaces must comply with the requirements of the OSHA Construction Industry Lead regulations prior to and during any work which may disturb lead-containing coatings.

A total of fourteen (14) paint film samples of suspect lead-containing paint were collected from the Fire Station 15 renovation areas. Samples were collected from representative surfaces in the accessible renovation areas. Analytical results confirmed that five (5) of 14 paint film samples collected at Fire Station 15, 2801 Wayne Avenue contain detectable concentrations of lead, or approximately 36%.

Current OSHA regulations require that employers measure airborne exposures to lead during any work which disturbs potential lead-containing paint. In addition, employers are required to safeguard employee health until exposure monitoring results are available by:

- Respiratory Protection
- Protective Clothing
- Change Areas
- Hand washing facilities
- Biological monitoring including blood sampling and analysis, and
- Training under Hazard Communication and Respirator Standards

When exposure monitoring results are available, then OSHA may require additional controls such as airtight barriers, warning signs, regulated areas and restrictions for entry by untrained workers.

Other potential environmental issues may also be present in the renovation areas, including mercury-containing materials, suspect PCB-containing fluorescent light ballasts, and Freon®-containing refrigerants.

Mercury-containing fluorescent light bulbs in the building have sufficient concentrations of mercury to be considered universal hazardous waste. In addition, thermostats in the buildings may contain small amounts of mercury, and one mercury-containing thermostat was observed during inspection. Batteries associated with

emergency lighting may also contain mercury, and are considered to be universal hazardous waste. These universal waste materials should be carefully removed from the building and recycled in accordance with current regulations.

Fluorescent light ballasts were made with PCBs until 1979. Ballasts made after that date are required to be marked with the legend "No PCBs". Given the age of the building, PCB-containing fluorescent light ballasts and other PCB-containing electrical capacitors and transformers may be present in the building, and each ballast, capacitor or transformer should be examined to determine if it is labeled "No PCBs". If necessary, ballasts, capacitors and transformers that are not so labeled should be carefully removed from the building and packaged and labeled for recycling or incineration in accordance with current regulations.

Refrigerated cooling systems in the building, including water coolers, window air-conditioners, and refrigerators, typically contain Freon® refrigerants that must be recovered by licensed refrigerant recycler if removed, in accordance with current regulations. No unauthorized venting of Freon® refrigerants to the atmosphere is permitted under current regulations, since these materials deplete the stratospheric ozone layer (Ozone Depleting Substances).

Finally, no significant accumulations of hazardous waste were observed during the building inspection that could require special remediation, although small amounts of maintenance and custodial chemicals including interior paint were observed in or near the renovation area. It was assumed that the remaining maintenance and custodial chemicals present in the renovation area will be relocated for use during normal custodial and maintenance operations. If not, then these materials may need to be labeled, packaged and transported to a licensed hazardous waste Treatment, Storage and Disposal site in compliance with federal and state hazardous waste regulations.

The results of this inspection can only reflect the condition of the property at the date and time of the site visit within the limits of the proposed work. There are limitations to asbestos inspections without dismantling or destroying the building or its systems. No inspection was performed in inaccessible locations. Recommendations are based on the professional judgment of the inspectors, and the results of the samples collected and analyzed. Helix Environmental, Inc. and its agents are neither responsible nor liable for the non-discovery of any defects in materials, craftsmanship, or other conditions, or any problems that may be discovered or manifest after the site visit date and time. Helix Environmental, Inc.

Mr. Curt Sparks, Associate AIA

March 20, 2025

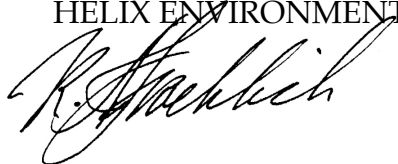
Page 8

and its agents make no warranty, expressed or implied, and accept no liability for the presence absence of asbestos or other hazardous materials in or on building products, materials, or areas. Helix Environmental, Inc. and its agents assume no responsibility for the cost of repairing, replacing, or removing any undiscovered or unreported condition or defect, or any future condition or defect.

If you have any questions or comments concerning the inspection or analytical results, please call me at (937) 226-0650.

Sincerely,

HELIX ENVIRONMENTAL, INC.

A handwritten signature in black ink, appearing to read "R. Froehlich", written over the company name.

Ralph A. Froehlich, CIH, CSP, QEP

President

Attach.

Mr. Curt Sparks, Associate AIA

March 20, 2025

Page 9

ATTACHMENTS

- **ANALYTICAL RESULTS AND SAMPLE DATA SHEETS**
- **SAMPLE LOCATIONS**
- **PHOTOGRAPHS**



The Identification Specialists

Analysis Report
prepared for
Helix Environmental Inc

Report Date: 3/13/2025

Project Name: Fire Station 15,2801 Wayne Avenue

Project #: 7347

SanAir ID#: 25016382



10501 Trade Court, North Chesterfield, Virginia 23236
888.895.1177 | 804.897.1177 | fax: 804.897.0070 | LabReports@SanAir.com | SanAir.com



SanAir ID Number

25016382

FINAL REPORT

3/13/2025 4:25:13 PM

Name: Helix Environmental Inc
Address: 1 Elizabeth Place
Suite 160
Dayton, OH 45417
Phone: 937-226-0650

Project Number: 7347

P.O. Number:

Project Name: Fire Station 15,2801 Wayne Avenue

Collected Date: 3/11/2025

Received Date: 3/12/2025 10:25:00 AM

Dear Benjamin Froehlich,

We at SanAir would like to thank you for the work you recently submitted. The 14 sample(s) were received on Wednesday, March 12, 2025 via UPS. The final report(s) is enclosed for the following sample(s): 7347-03-11-61, 7347-03-11-62, 7347-03-11-63, 7347-03-11-64, 7347-03-11-65, 7347-03-11-66, 7347-03-11-67, 7347-03-11-68, 7347-03-11-69, 7347-03-11-70, 7347-03-11-71, 7347-03-11-72, 7347-03-11-73, 7347-03-11-74.

These results only pertain to this job and should not be used in the interpretation of any other job. This report is only complete in its entirety. Refer to the listing below of the pages included in a complete final report.

Sincerely,

A handwritten signature in black ink, appearing to read "Abisola Kasali".

Abisola Kasali
Metals Laboratory Director
SanAir Technologies Laboratory

Final Report Includes:

- Cover Letter
- Chemistry Analysis
- Disclaimers and Additional Information

Sample conditions:

- 14 samples in Good condition.



SanAir ID Number

25016382

FINAL REPORT

3/13/2025 4:25:13 PM

Name: Helix Environmental Inc
Address: 1 Elizabeth Place
Suite 160
Dayton, OH 45417
Phone: 937-226-0650

Project Number: 7347**P.O. Number:****Project Name:** Fire Station 15,2801 Wayne Avenue**Collected Date:** 3/11/2025**Received Date:** 3/12/2025 10:25:00 AM

Analyst: Templeton, Kat

Test Method: SW846/M3050B/7000B

Lead Paint Analysis

PAINT Sample	Description	µg Pb In Sample	Sample Size (grams)	Calculated RL	Sample Results	Sample Results
25016382 - 1	7347-03-11-61 Beige Paint On Metal Duct	< 10	0.1013	98.7	<98.7 µg/g (ppm)	<0.010 % By Weight
25016382 - 2	7347-03-11-62 Red Paint On Metal Tank	754	0.1163	86	6480 µg/g (ppm)	0.648 % By Weight
25016382 - 3	7347-03-11-63 Brown Over Blue Paint On Metal	64	0.1048	95.4	615.4 µg/g (ppm)	0.062 % By Weight
25016382 - 4	7347-03-11-64 Yellow Paint On Concrete Floor	145	0.1049	95.3	1379 µg/g (ppm)	0.138 % By Weight
25016382 - 5	7347-03-11-65 Beige Paint on Core Black Wall	< 10	0.1087	92	<92 µg/g (ppm)	<0.009 % By Weight
25016382 - 6	7347-03-11-66 Beige Paint On Metal	< 10	0.1138	87.9	<87.9 µg/g (ppm)	<0.009 % By Weight
25016382 - 7	7347-03-11-67 Orange Paint On Metal Wall	1123	0.1071	93.4	10490 µg/g (ppm)	1.049 % By Weight
25016382 - 8	7347-03-11-68 Beige Paint On Black Wall	< 10	0.11	90.9	<90.9 µg/g (ppm)	<0.009 % By Weight
25016382 - 9	7347-03-11-69 Orange Paint On Block Wall	< 10	0.106	94.3	<94.3 µg/g (ppm)	<0.009 % By Weight
25016382 - 10	7347-03-11-70 Terracotta Paint On Drywall Wall	10	0.1055	94.8	96.6 µg/g (ppm)	0.010 % By Weight
25016382 - 11	7347-03-11-71 Grey Paint On Drywall Wall	< 10	0.1095	91.3	<91.3 µg/g (ppm)	<0.009 % By Weight
25016382 - 12	7347-03-11-72 Red Over Green/Brown Paint On Metal	< 10	0.1212	82.5	<82.5 µg/g (ppm)	<0.008 % By Weight
25016382 - 13	7347-03-11-73 Red Paint On Metal	< 10	0.1031	97	<97 µg/g (ppm)	<0.010 % By Weight

Method Reporting Limit <10 µg/0.1 g paint

Signature: *Kaitlyn Templeton*

Date: 3/13/2025

Reviewed: *Abisela*

Date: 3/13/2025



SanAir ID Number

25016382

FINAL REPORT

3/13/2025 4:25:13 PM

Name: Helix Environmental Inc

Address: 1 Elizabeth Place
Suite 160

Dayton, OH 45417

Phone: 937-226-0650

Project Number: 7347

P.O. Number:

Project Name: Fire Station 15,2801 Wayne Avenue

Collected Date: 3/11/2025

Received Date: 3/12/2025 10:25:00 AM

Analyst: Templeton, Kat

Test Method: SW846/M3050B/7000B

Lead Paint Analysis

PAINT Sample	Description	$\mu\text{g Pb}$ In Sample	Sample Size (grams)	Calculated RL	Sample Results	Sample Results
25016382 - 14	7347-03-11-74 Yellow Paint On Metal Telephone Box	< 10	0.1035	96.6	<96.6 $\mu\text{g/g (ppm)}$	<0.010 % By Weight

Method Reporting Limit <10 $\mu\text{g}/0.1\text{ g}$ paint

Signature: *Kaitlyn Templeton*

Date: 3/13/2025

Reviewed: *Abisela*

Date: 3/13/2025

Disclaimer

SanAir Technologies Laboratory, Inc. participates in the Environmental Lead Accreditation Program (ELAP) administered by AIHA LAP, LLC (Laboratory ID LAP-162952). Refer to our accreditation certificate and scope on our website or www.aihaaccreditedlabs.org for an up to date list of the Fields of Testing for which we are accredited. SanAir also participates in the State of New York's DOH-ELAP (Lab Id 11983), and has met the EPA's NLLAP program standards. This report does not constitute nor shall be used by the client to claim product, process, system, or person certification, approval, or endorsement by AIHA LAP, LLC, NELAC, NIST, and/or any other U.S. governmental agencies; and test results in this report may not be accredited by every local, state or federal regulatory agency.

This report is the sole property of the client named on the SanAir Technologies Laboratory chain-of-custody (COC). Results in the report are confidential information intended only for the use by the customer listed on the chain of custody. Neither results nor reports will be discussed with or released to any third party without our client's written permission. Final reports cannot be reproduced, except in full, without written authorization from SanAir Technologies Laboratory, Inc. This report and any information contained within shall not be edited, altered, or modified in any way by any persons or agencies receiving, viewing, distributing, or otherwise possessing a copy of this final report. The laboratory reserves the right to perform amendments to any finalized report, of which shall supersede and make obsolete any previous editions. Such changes, modifications, additions, or deletions shall be effective immediately upon notice thereof, which may be given by means including but not limited to posting on the SanAir client portal website, electronic or conventional mail, or by any other means. The information provided in this report applies only to the samples submitted and is relevant only for the date, time, and location of sampling. The accuracy of the results of the analysis is dependent upon the method of sample procurement and information provided by the client on the COC. SanAir is not responsible for the method of sample procurement. SanAir assumes no responsibility for information provided by the client on the COC such as project number, project name, collection dates, po number, special instructions, samples collected by, sample numbers, sample identifications, sample type, selected analysis type, flow rate, total volume or area, and start stop times that may affect the validity of the results in this report. SanAir Technologies Laboratory, Inc only assures the precision and accuracy of the data it generates and assumes no responsibility for errors or biasing that occur during collection prior to SanAir's receipt of the sample(s). Evaluation reports are based solely on the sample(s) in the condition in which they arrived at the laboratory and on the information provided by the client on the COC. Sample(s) were received in good condition unless otherwise noted on the report. SanAir assumes no responsibility or liability for the manner in which the results are used or interpreted. SanAir's Method Detection Limits (MDL) and Reporting Limits (RL) have been derived using various materials meeting each accrediting agencies' standards. All quality control results are acceptable unless otherwise noted. SanAir does not make contamination corrections to reports based upon analysis of laboratory and/or field blanks. All samples are disposed of after 90 days unless otherwise requested by the client. For Lead Exposure Limits, refer to HUD Guidelines for the Evaluation and Control of Lead-Based Paint Hazards and State and Federal Regulations, where applicable. For Lead Exposure Limits in Air, refer to EPA National Ambient Air Quality Standards, OSHA Action Levels & Permissible Exposure Limits (General Industry & Construction), and relative state or federal requirements where applicable.

AIHA LAP, LLC Lab ID: LAP-162952

Commonwealth of VA Department of General Services DCLS, VELAP Laboratory ID#460251

New York State Department of Health Laboratory ID No: 11983

California State Environmental Laboratory Accreditation Program Certificate No: 2915

State of Connecticut Department of Public Health Environmental Laboratory Registration Number: PH-0105

New Jersey Department of Environment Protection Environmental Laboratory Certification ID# VA014

Ohio Department of Health Environmental Lead Laboratory Approval Number E10049

State of Rhode Island Department of Health Environmental Lead Laboratory No LAO00371



ENVIRONMENTAL, INC.

1 ELIZABETH PLACE, SUITE 160H

DAYTON, OHIO 45417-3445

(937) 226-0650

LABORATORY:

DATE SAMPLED:

DATE REQUIRED:

LOCATION:

CONTRACTOR/CLIENT:

ADDRESS:

INSPECTOR:

JOB NUMBER:

RUSH - YES OR NO

DATE REQUIRED:

LOCATION:

CONTRACTOR/CLIENT:

ADDRESS:

INSPECTOR:

JOB NUMBER:

DETERIORATED PAINT SAMPLING FORM

ANALYSES REQUESTED:

Lead (Pb) % by weight

LAB SAMPLE NO.	HELIX SAMPLE NUMBER	ROOM	BUILDING COMPONENT	CONDITION	SAMPLE AREA	COMMENTS
	7347-03-11-61	1st Fl, Mech Room, 5 Duct	Bridge Paint on Metal Duct	P	2" x 2"	Flaking
	7347-03-11-62	1st Fl, Mech Room, NE Tank Top	Red Paint on Metal Tank	P	2" x 4"	Unable to remove all paint/primer
	7347-03-11-63	1st Fl, Mech Room, Stair Riser	Brown over Blue Paint on Metal	P	1" x 2"	
	7347-03-11-64	Truck Area, Center 5 Floor Stairs	Yellow Paint on Concrete Floor	P	1" x 3"	
	7347-03-11-65	Truck Area, E Wall	Beige Paint on Concrete Block Wall	F	1" x 1"	under hose valve
	7347-03-11-66	Truck Area, E Wall	Beige Paint on Metal	F	1" x 1"	rusty metal
	7347-03-11-67	Hose Valve Access Union	Orange Paint on Metal	F	1" x 2"	rusty metal
	7347-03-11-68	Men's RR, W Wall of Urinal	Beige Paint on Black Wall	F	1" x 2"	

THIS IS A CHAIN OF CUSTODY DOCUMENT. PLEASE COMPLETE, SIGN AND DATE. PLEASE RETURN ORIGINAL TO HELIX ENVIRONMENTAL, INC.

RECD 1	RELINQUISHED BY	COMPANY	DATE/TIME	RECD 3	RELINQUISHED BY	COMPANY	DATE/TIME
RECD 2	RECEIVED BY	COMPANY	DATE/TIME	RECD 4	RELINQUISHED BY	COMPANY	DATE/TIME

25016382



ENVIRONMENTAL, INC.

1 ELIZABETH PLACE, SUITE 160H

DAYTON, OHIO 45417-3445

(937) 226-0650

25016382

LABORATORY: 544Y

DATE SAMPLED: 3/11/25

DATE REQUIRED: 24 APR 2025

LOCATION: Dayton, OH

CONTRACTOR/CLIENT: RFP Architecture

ADDRESS: Fire Station 15, 2601 Wingate Avenue

INSPECTOR: R. F. F. Mich

JOB NUMBER: 7347

ANALYSES REQUESTED: Lead (Pb) % by weight

DETERIORATED PAINT SAMPLING FORM

LAB SAMPLE NO.	HELIX SAMPLE NUMBER	ROOM	BUILDING COMPONENT	CONDITION	SAMPLE AREA	COMMENTS
	7347-03-11-69	Water Room, W Wall by Door to Truck Area	Orange Paint on Block Wall 4111	F	6.5" x 8"	
	7347-03-11-70	N Restroom, E Wall behind door	tan/white Paint on Drywall Wall 4111	G	2" x 2"	
	7347-03-11-71	Break Room, NW Wall	Grey Paint on Drywall Wall 4111	G	2" x 2"	
	7347-03-11-72	Extension S Door to Truck Area	Red over Green/Brown Paint on Metal 5111	F	1" x 4"	
	7347-03-11-73	Extension, by N door	Red Paint on Metal	F	0.5" x 4"	
	7347-03-11-74	Extension, by N door	Yellow Paint on Metal Telephone Box 5111	F	1.5" x 5"	
	7347-03-11-75					
	7347-03-11-76					

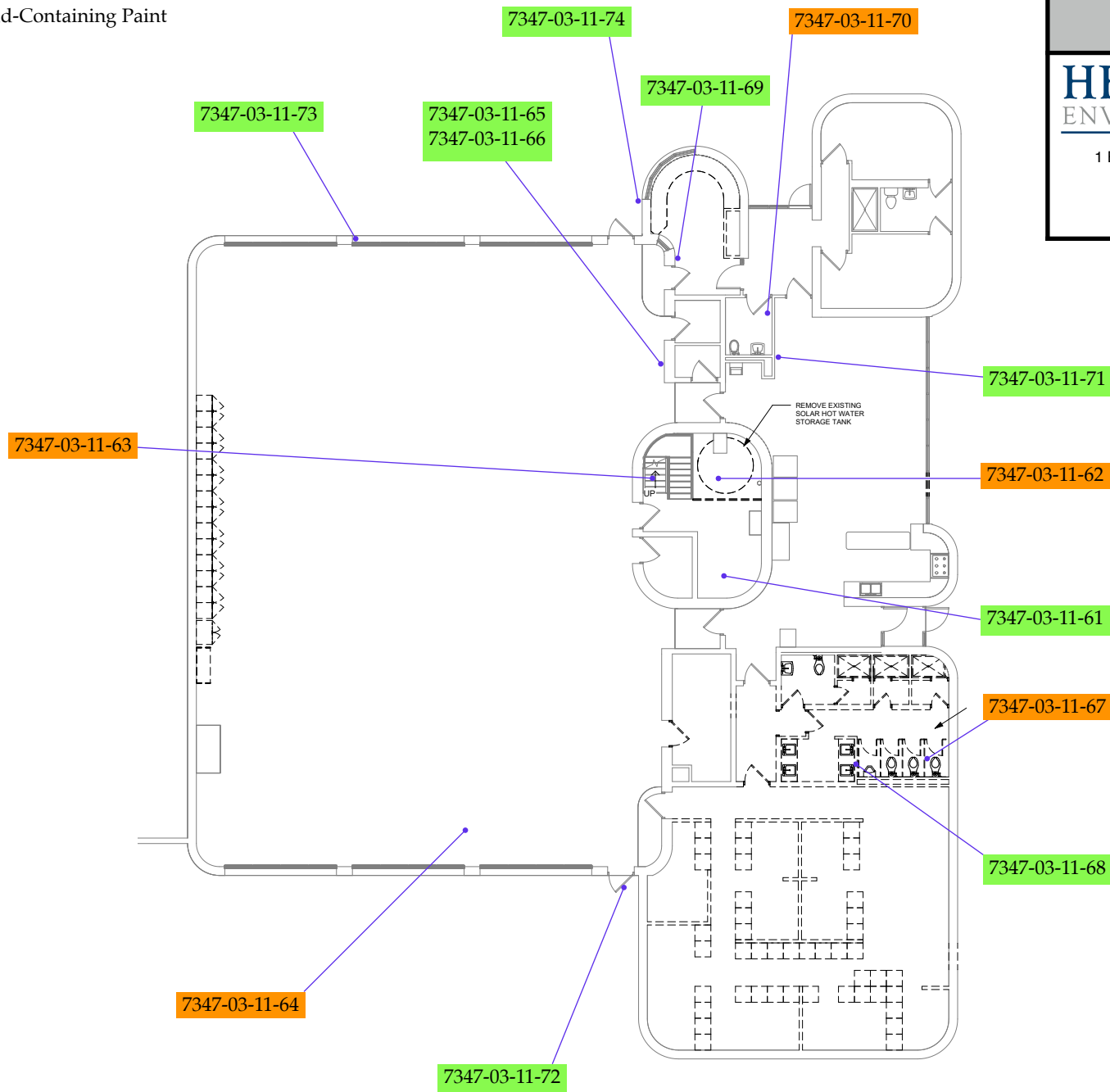
THIS IS A CHAIN OF CUSTODY DOCUMENT. PLEASE COMPLETE, SIGN AND DATE. PLEASE RETURN ORIGINAL TO HELIX ENVIRONMENTAL, INC.

RECD	RELINQUISHED BY:	COMPANY:	DATE/TIME	RECD	RELINQUISHED BY:	COMPANY:	DATE/TIME
1	<i>[Signature]</i>	<i>Helix Env. Inc.</i>	3/11/2025 1200	3			
2	RECEIVED BY:	COMPANY:	DATE/TIME	4			

SEC 3-12-25 10:25 AM

LEGEND

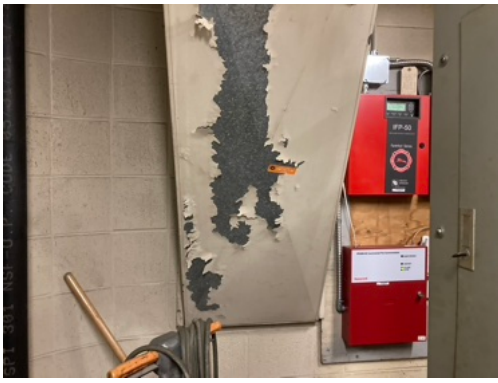
- Lead-Containing Paint
- Non Lead-Containing Paint



LEAD PAINT SAMPLE LOCATIONS,
1st FLOOR, FIRE STATION 15,
2801 WAYNE AVENUE,
DAYTON, OH

HELIX ENVIRONMENTAL, INC.

1 ELIZABETH PLACE, SUITE 160H
DAYTON, OHIO 45417
937-226-0650



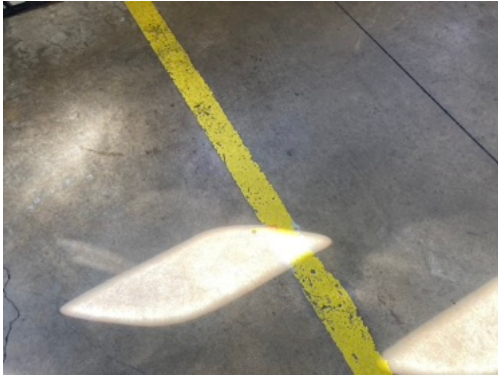
Paint Film Sample 7347-03-11-61 with no detectable lead



Paint Film Sample 7347-03-11-62 with 0.648% lead



Paint Film Sample 7347-03-11-63 with 0.062% lead



Paint Film Sample 7347-03-11-64 with 0.138% lead



Paint Film Sample 7347-03-11-65 with no detectable lead



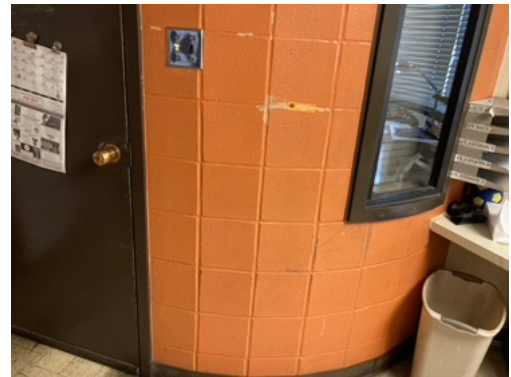
Paint Film Samples 7347-03-11-65 & 66 with no detectable lead



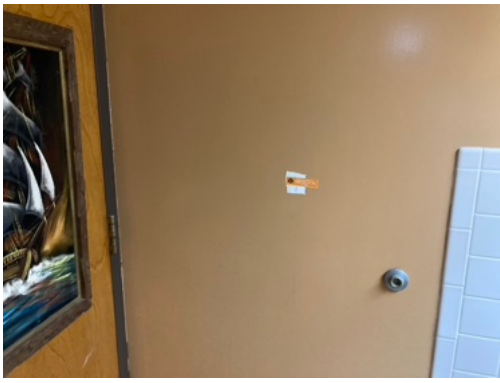
Paint Film Sample 7347-03-11-67 with 1.049% lead



Paint Film Sample 7347-03-11-68 with no detectable lead



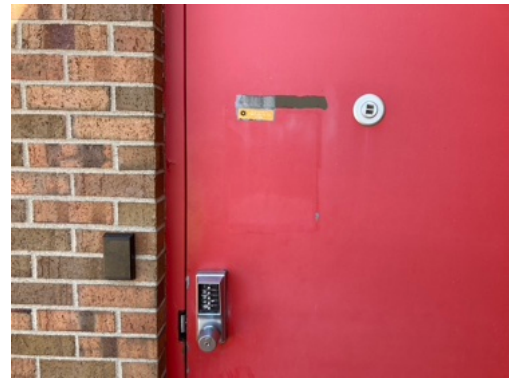
Paint Film Sample 7347-03-11-69 with no detectable lead



Paint Film Sample 7347-03-11-79 with
0.010% lead



Paint Film Sample 7347-03-11-71 with
no detectable lead



Paint Film Sample 7347-03-11-72 with
no detectable lead



Paint Film Sample 7347-03-11-73 with
no detectable lead



Paint Film Sample 7347-03-11-74 with
no detectable lead