



Purchasing Department

MONTGOMERY COUNTY ADMINISTRATION BUILDING
451 WEST THIRD STREET
P.O. BOX 972
DAYTON, OHIO 45422-1110

August 21, 2025

■ ■ ADDENDUM # 3 ■■■

**PROJECT NUMBER: 130012-59
EASTERN REGIONAL WATER RECLAMATION FACILITY
OPERATIONS BUILDING RENOVATION
DUE DATE: 08/27/2025 @ 1:30 PM**

Dear Prospective Bidders:

The following additions, deletions and/or changes to Project Number 130012-59, Eastern Regional Water Reclamation Facility Operations Building Renovation, are to be considered part of the original Bid Documents and are equally binding.

**Questions/Answers from Submitted Questions
Changes to Bid Documents – Specifications and Contract Documents
Addendum Attachments**

Please download Addendum # 3 from the Montgomery County OpenGov Procurement Portal located at <https://procurement.opengov.com/portal/montgomerycountyoh>.

If you should have any questions concerning these changes, please contact via email at asberryb@mcoho.org.

Sincerely,

MONTGOMERY COUNTY PURCHASING

Barbara Asberry, NIGP-CPP, CPPB, MPA
Senior Buyer

**EASTERN REGIONAL WATER RECLAMATION FACILITY
OPERATIONS BUILDING RENOVATION
PROJECT NO. 130012-59**

QUESTIONS/ANSWERS FROM SUBMITTED QUESTIONS

1. **Q #4 Cabling Demo.** *Note 5 on ED-102 states to provide new cat6 cable for existing to remain devices. There are no existing to remain devices shown. Are the new cat6 cables supposed to be for the cables listed in note 7 at the communication hub device? If they are not referring to the cables in note 7, how many new Cat6 cables are wanted in that area? Note 7, drawing ED-102 - How many Cat6 cables need to be rerouted?*

A. There are a total of 10 cat6 cables under the floor, 4 of which go through the box referenced in plan note 7. All 10 of the cat6 cables should be included in the bid to be re-routed. The exact location they are routed to must be confirmed during construction.
2. **Q #5 ss Window Sills.** *Looking at the SS window sills, can you confirm the depth of the sill required at window C. Since this is elevated could we utilize a lift you have on site to install? 123553.13 paragraph 2.9 indicates a balance table, we do not see on the plans. SS-1 calls out a Premium selection, a color can help us refine our price.*

A. Window C sill matches the depth of window D. There is no lift available for use. There is no balance table in this project, paragraph 2.9 has been removed (see CHANGES TO BID DOCUMENTS – SPECIFICATIONS AND CONTRACT DOCUMENTS). Basis of Design for SS-1 is Corian Clam Shell (see CHANGES TO BID DOCUMENTS – SPECIFICATIONS AND CONTRACT DOCUMENTS).
3. **Q #6 Missing Information – Drawing Q-001; Spec 123553.** *Drawing Q-001 refers to a fume hood detail that provides service information and base cabinet information. There is no Fume Hood detail in the drawings, please provide. Drawing Q-001 refers to a "movable table schedule", but there is not one. Please provide. Spec section 123553 calls out a marble topped balance table, but there does not appear to be a balance table on the project. Is a balance table required, and if so would a vibration table be acceptable? The two accomplish the same thing, however a balance table relies on the weight and density of the marble to control vibration where as the vibration table is a specially engineered table that provided a vibration free surface through a two-in-one table design where an inner work surface is isolated from the surrounding the support table.*

A. Refer to lab plans and elevations for details associated with the fume hood. There are no moveable lab tables or balance table (see CHANGES TO BID DOCUMENTS – SPECIFICATIONS AND CONTRACT DOCUMENTS).
4. **Q #7 Spec and Drawing Clarification.** *1) Drawing Q-001 refers to a drawing Q-500 that has typical casework sections, however there is no drawing Q-500. Please provide. 2) Spec 130012 references Reagent Shelving and a Glass Washer, but neither appear on the details or elevations for Lab. Please indicate where these items are intended to go. 3) Spec 130012 refers to 3" casters in 2.12 laboratory accessories, but also calls out a 4" toe kick. Please indicate which fixtures are to have casters. 4) Spec 1310012 calls for under cabinet lighting, should this include valences with the lights or just the lighting.*

A. 1) Reference to Q-500 should be revised to Q-412 (see CHANGES TO BID DOCUMENTS – SPECIFICATIONS AND CONTRACT DOCUMENTS). 2) There is no Reagent Shelving, none is indicated on the plans. All references to A12 are to be revised to "GLASSWARE WASHER" (see CHANGES TO BID DOCUMENTS – SPECIFICATIONS AND CONTRACT DOCUMENTS). 3) There are no cabinets with casters, none are indicated on the drawings. 4) There are no under cabinet task-lights, none are indicated on the drawings.

**EASTERN REGIONAL WATER RECLAMATION FACILITY
OPERATIONS BUILDING RENOVATION
PROJECT NO. 130012-59**

QUESTIONS/ANSWERS FROM SUBMITTED QUESTIONS

5. **Q #8 Exterior Building Signage.** *Is the wording " Pretreatment solids operations building " to the right of door X104-1 and below " MCES PTSOB " signage from drawing A-201 part of the project? Or, is it not needed since the same worded signage is located on the building to the left side and above door X104-1? If it is needed, what material is it composed of and what size are the letters?*
- A.** Refer to coded note 9 on sheet A-201 issued in Addendum 01.

**EASTERN REGIONAL WATER RECLAMATION FACILITY
OPERATIONS BUILDING RENOVATION
PROJECT NO. 130012-59**

**CHANGES TO BID DOCUMENTS – SPECIFICATIONS AND CONTRACT
DOCUMENTS**

CHANGES TO SPECIFICATIONS:

1. Specification 087100 – DOOR HARDWARE:
 - a. Revise Hardware Sets per attached “131715 OPT0422342 Version 3”.
2. Specification 101423 – PANEL SIGNAGE:
 - a. Add specification in its entirety.
3. Specification 123553.13 – METAL LABOARATORY CASEWORK:
 - a. 2.4.B.6 – Add the following manufacturer, “Panorama Metal Casework by Hamilton Lab Solutions”
 - b. 2.9 – Remove LABORATORY SPECIALY TABLES in its entirety.
4. Specification 123661 – SIMULATED STONE COUNTERTOPS:
 - a. 2.2.B.1.e – Add the following manufacturer, “Basis of Design - Corian Solid Surface, Clam Shell”

CHANGES TO DRAWINGS:

1. Sheet A-601 DOOR SCHEDULE, TYPES & DETAILS
 - a. FIRST FLOOR DOOR SCHEDULE:
 - i. Revise hardware types per attached sheet.
 - b. SECOND FLOOR DOOR SCHEDULE:
 - i. Revise hardware types per attached sheet.
2. Sheet Q-001 STANDARD LAB SCHEDULES AND DETAILS
 - a. GENERAL LABOARATORY EQUIPMENT NOTES: Revise note, “REFER TO SHEET Q-500 FOR TYPICAL CASEWORK SECTIONS” to read, “REFER TO SHEET Q-412 FOR TYPICAL CASEWORK SECTIONS”.
 - b. Remove all reference to “Moveable Table” or “Moveable Lab Table Schedule”.
3. Sheet Q-401 ENLARGED LAB PLANS
 - a. Plan detail 1: Revise symbol A12 to “GLASSWARE WASHER, refer to 123553.13, 2.18”.
4. Sheet Q-411 LAB CASEWORK ELEVATIONS
 - a. ELEV-WEST 3: Revise symbol A12 to “GLASSWARE WASHER, refer to 123553.13, 2.18”.
5. Sheet E-204 ELECTRICAL FIRST FLOOR SECURITY AND ACCESS CONTROL FLOOR PLAN
 - a. Revise location of Security Camera Doorbell from door X104-1 to 113-3.

**EASTERN REGIONAL WATER RECLAMATION FACILITY
OPERATIONS BUILDING RENOVATION
PROJECT NO. 130012-59**

**CHANGES TO BID DOCUMENTS – SPECIFICATIONS AND CONTRACT
DOCUMENTS**

6. Sheet E-001 ELECTRICAL SYMBOL LIST AND LIGHTING SCHEDULE
The following fixtures shall be considered acceptable equals provided they meet all requirements listed in the project documents:
Fixture A: Tracelight: LPX-24-CPM-ST
Fixture A1: Tracelight: LPX-22-CPM-ST
Fixture B: Nora: NOXAC-5631, NHIC-6LMRAT
Fixture C: Selux: L10-1C25-935-LW-C-LENGTH-WH-U-DIM
Fixture C1: Selux: L10-1C25-935-LW-F-LENGTH-WH-U-DIM
Fixture D: Ledalite: 4908L93522QSN(LENGTH)DE1NNNBCC4S1
Fixture D1: Ledalite: 4908L93522QSN(LENGTH)DE1NNNBCC4S3 (Trimless),
4908L93522QSN(LENGTH)DE1NNNBCC4S3 (Trimmed)
Fixture E: Envoy: EFL372-LE1200C-B-W
Fixture E1: Envoy: EFL372-LE1800-C-B-W
Fixture EX: Exitronix: VLED-U-WH-EL90L

ADDENDUM ATTACHMENTS

Specifications 087100
101423

Drawing A-601

Abbreviation	Name
B/O	By Others
DON	Don-Jo Manufacturing, Inc.
GLY	Glynn-Johnson Corp
IVE	H.B. Ives
LCN	LCN Commercial Division
SCE	Schlage Electronic Security
SCH	Schlage Lock Company
VON	Von Duprin
ZER	Zero International Inc

131715 OPT0422342 Version 3

Hardware Set No. 01

For use on mark/door #(s):

103-1

Each to have:

3	EA	HINGE	5BB1HW 4.5 X 4.5	652	IVE
1	EA	FIRE EXIT HDWE	99-L-BE-F-17	626	VON
1	EA	SURFACE CLOSER	4040XP EDA	689	LCN
1	EA	KICK PLATE	8400 8" X 1 1/2" LDW B-CS	630	IVE
1	EA	WALL STOP	WS406/407CVX	630	IVE
1	EA	GASKETING	488SBK PSA	BK	ZER

Hardware Set No. 02

For use on mark/door #(s):

109-1

Each to have:

6	EA	HINGE	5BB1 4.5 X 4.5	652	IVE
1	EA	CONST LATCHING BOLT	FB51T	630	IVE
1	EA	VANDL STOREROOM LOCK	ND96JD SPA	626	SCH
1	EA	FSIC CORE	91-161 EV B	626	SCH
1	EA	OH STOP	450S	689	GLY
1	EA	WALL STOP	WS406/407CVX	630	IVE
1	EA	OVERLAPPING ASTRAGAL	PROVIDED BY DR MANFG.	600	B/O
2	EA	SILENCER	SR64	GRY	IVE

130012-59
Montgomery County
Eastern Regional Water Reclamation Facility
Operations Building Renovation

Hardware Set No. 03

For use on mark/door #(s):

111-1	111-2	117-1	117-2		
Each to have:					
3	EA	HINGE	5BB1HW 4.5 X 4.5	652	IVE
1	EA	PUSH PLATE	8200 8" X 16"	630	IVE
1	EA	PULL PLATE	8305 10" 4" X 16" F	630	IVE
1	EA	SURFACE CLOSER	4040XP	689	LCN
1	EA	KICK PLATE	8400 8" X 1 1/2" LDW B-CS	630	IVE
1	EA	WALL STOP	WS406/407CVX	630	IVE
3	EA	SILENCER	SR64	GRY	IVE

REGULAR ARM MOUNTED DOOR CLOSER - INSTALL DOOR CLOSER ON PULL SIDE OF THE DOOR.

Hardware Set No. 04

For use on mark/door #(s):

111-3	117-3	120-2			
Each to have:					
3	EA	HINGE	5BB1HW 4.5 X 4.5	652	IVE
1	EA	PUSH/PULL LATCH	HL6 E1 3 3/4" B (AT 45" AFF)	626	SCH
1	EA	SURFACE CLOSER	4040XP CUSH	689	LCN
1	EA	KICK PLATE	8400 8" X 1 1/2" LDW B-CS	630	IVE
1	EA	GASKETING	488SBK PSA	BK	ZER

Hardware Set No. 05

For use on mark/door #(s):

113-2					
Each to have:					
6	EA	HINGE	5BB1HW 4.5 X 4.5	652	IVE
1	EA	FIRE EXIT HDWE	9949-L-BE-F-17-LBL	626	VON
1	EA	FIRE EXIT HDWE	9949-L-BE-F-17-LBLAFL	626	VON
2	EA	SURFACE CLOSER	4040XP EDA	689	LCN
2	EA	KICK PLATE	8400 8" X 1" LDW B-CS	630	IVE
2	EA	WALL STOP	WS406/407CVX	630	IVE
1	EA	GASKETING	488SBK PSA	BK	ZER
1	EA	MEETING STYLE	8217SBK PSA	BK	ZER

130012-59
Montgomery County
Eastern Regional Water Reclamation Facility
Operations Building Renovation

Hardware Set No. 06

For use on mark/door #(s):

113-3

Each to have:

6	EA	HINGE	5BB1HW 4.5 X 4.5	652	IVE
1	EA	FIRE EXIT HDWE	9949-L-BE-F-17-LBL	626	VON
1	EA	FIRE EXIT HDWE	9949-L-BE-F-17-LBLAFL	626	VON
1	EA	SURFACE CLOSER	4040XP CUSH	689	LCN
1	EA	SURFACE CLOSER	4040XP EDA	689	LCN
2	EA	KICK PLATE	8400 8" X 1" LDW B-CS	630	IVE
1	EA	WALL STOP	WS406/407CVX	630	IVE
1	EA	GASKETING	488SBK PSA	BK	ZER
1	EA	MEETING STYLE	8217SBK PSA	BK	ZER

Hardware Set No. 07

For use on mark/door #(s):

116-1

Each to have:

3	EA	HINGE	5BB1HW 4.5 X 4.5	652	IVE
1	EA	PUSH/PULL LATCH	HL6 E1 3 3/4" B (AT 45" AFF)	626	SCH
1	EA	SURFACE CLOSER	4040XP	689	LCN
1	EA	KICK PLATE	8400 8" X 1 1/2" LDW B-CS	630	IVE
1	EA	WALL STOP	WS406/407CVX	630	IVE
1	EA	GASKETING	488SBK PSA	BK	ZER

REGULAR ARM MOUNTED DOOR CLOSER - INSTALL DOOR CLOSER ON PULL SIDE OF THE DOOR.

Hardware Set No. 08

For use on mark/door #(s):

117-4

Each to have:

3	EA	HINGE	5BB1 4.5 X 4.5	652	IVE
1	EA	VANDL STOREROOM LOCK	ND96JD SPA	626	SCH
1	EA	FSIC CORE	91-161 EV B	626	SCH
1	EA	WALL STOP	WS406/407CVX	630	IVE
3	EA	SILENCER	SR64	GRY	IVE

130012-59
Montgomery County
Eastern Regional Water Reclamation Facility
Operations Building Renovation

Hardware Set No. 09

For use on mark/door #(s):

120-1

Each to have:

3	EA	HINGE	5BB1HW 5 X 4.5	652	IVE
1	EA	PUSH/PULL LATCH	HL6 E1 3 3/4" B (AT 45" AFF)	626	SCH
1	EA	OH STOP	100S	630	GLY
1	EA	SURFACE CLOSER	4040XP REG ARM ST-1630	689	LCN
1	EA	MOUNTING PLATE	4040XP-18TJ SRT	689	LCN
1	EA	KICK PLATE	8400 8" X 1 1/2" LDW B-CS	630	IVE
1	EA	GASKETING	488SBK PSA	BK	ZER

Hardware Set No. 10

For use on mark/door #(s):

123-1

Each to have:

3	EA	HINGE	5BB1 4.5 X 4.5	652	IVE
1	EA	VANDL OFFICE LOCK	ND91JD SPA	626	SCH
1	EA	FSIC CORE	91-161 EV B	626	SCH
1	EA	OH STOP	100S	630	GLY
1	EA	KICK PLATE	8400 8" X 1 1/2" LDW B-CS	630	IVE
3	EA	SILENCER	SR64	GRY	IVE

Hardware Set No. 11

For use on mark/door #(s):

123-2

124-2

Each to have:

3	EA	HINGE	5BB1HW 4.5 X 4.5	652	IVE
1	EA	VANDL OFFICE LOCK	ND91JD SPA	626	SCH
1	EA	FSIC CORE	91-161 EV B	626	SCH
1	EA	OH STOP	100S	630	GLY
1	EA	SURFACE CLOSER	4040XP REG ARM ST-1630	689	LCN
1	EA	MOUNTING PLATE	4040XP-18TJ SRT	689	LCN
1	EA	KICK PLATE	8400 8" X 1 1/2" LDW B-CS	630	IVE
3	EA	SILENCER	SR64	GRY	IVE

130012-59
Montgomery County
Eastern Regional Water Reclamation Facility
Operations Building Renovation

Hardware Set No. 12

For use on mark/door #(s):

204-1

Each to have:

3	EA	HINGE	5BB1HW 4.5 X 4.5	652	IVE
1	EA	FIRE EXIT HDWE	99-L-BE-F-17	626	VON
1	EA	SURFACE CLOSER	4040XP	689	LCN
1	EA	KICK PLATE	8400 8" X 1 1/2" LDW B-CS	630	IVE
1	EA	WALL STOP	WS406/407CVX	630	IVE
1	EA	GASKETING	488SBK PSA	BK	ZER

REGULAR ARM MOUNTED DOOR CLOSER - INSTALL DOOR CLOSER ON PULL SIDE OF THE DOOR.

Hardware Set No. 13

For use on mark/door #(s):

206-1

206-2

Each to have:

3	EA	HINGE	5BB1HW 4.5 X 4.5	652	IVE
1	EA	VANDL ENTRANCE LOCK	ND92JD SPA	626	SCH
1	EA	FSIC CORE	91-161 EV B	626	SCH
1	EA	SURFACE CLOSER	4040XP	689	LCN
1	EA	KICK PLATE	8400 8" X 1 1/2" LDW B-CS	630	IVE
1	EA	WALL STOP	WS406/407CCV	630	IVE
3	EA	SILENCER	SR64	GRY	IVE

Hardware Set No. 14

For use on mark/door #(s):

210-1

Each to have:

3	EA	HINGE	5BB1HW 5 X 4.5	652	IVE
1	EA	FIRE EXIT HDWE	99-L-BE-F-17	626	VON
1	EA	SURFACE CLOSER	4040XP	689	LCN
1	EA	KICK PLATE	8400 8" X 1 1/2" LDW B-CS	630	IVE
1	EA	WALL STOP	WS406/407CVX	630	IVE
1	EA	GASKETING	488SBK PSA	BK	ZER

REGULAR ARM MOUNTED DOOR CLOSER - INSTALL DOOR CLOSER ON PULL SIDE OF THE DOOR.

130012-59
Montgomery County
Eastern Regional Water Reclamation Facility
Operations Building Renovation

Hardware Set No. 15

For use on mark/door #(s):

214-1	217-1	218-1	221-1	222-1		
Each to have:						
3	EA	HINGE	5BB1 4.5 X 4.5	652	IVE	
1	EA	VANDL OFFICE LOCK	ND91JD SPA	626	SCH	
1	EA	FSIC CORE	91-161 EV B	626	SCH	
1	EA	KICK PLATE	8400 8" X 1 1/2" LDW B-CS	630	IVE	
1	EA	WALL STOP	WS406/407CCV	630	IVE	
3	EA	SILENCER	SR64	GRY	IVE	

Hardware Set No. 16

For use on mark/door #(s):

215-1						
Each to have:						
6	EA	HINGE	5BB1HW 4.5 X 4.5	652	IVE	
2	EA	TWO PT CLASSRM LOCK	LM9270J 17A LBL	626	SCH	
2	EA	FSIC CORE	91-161 EV B	626	SCH	
2	EA	OH STOP	100S	630	GLY	
2	EA	SURFACE CLOSER	4040XP REG ARM ST-1630	689	LCN	
1	EA	MOUNTING PLATE	4040XP-18TJ SRT	689	LCN	
2	EA	KICK PLATE	8400 8" X 1" LDW B-CS	630	IVE	
2	EA	SILENCER	SR64	GRY	IVE	

Hardware Set No. 17

For use on mark/door #(s):

223-1						
Each to have:						
3	EA	HINGE	5BB1HW 4.5 X 4.5	652	IVE	
1	EA	PRIVACY W/IND	ND40S SPA OS-OCC	626	SCH	
1	EA	SURFACE CLOSER	4040XP	689	LCN	
1	EA	KICK PLATE	8400 8" X 1 1/2" LDW B-CS	630	IVE	
1	EA	WALL STOP	WS406/407CCV	630	IVE	
3	EA	SILENCER	SR64	GRY	IVE	

Hardware Set No. AC-01
For use on mark/door #(s):
X104-1

Each to have:

2	EA	CONT. HINGE	112XY EPT	711	IVE
2	EA	POWER TRANSFER	EPT10 CON	622	VON
1	EA	ELEC PANIC HDWE	SD-RX-QEL-9949-EO-CON 24 VDC	711	VON
1	EA	ELEC PANIC HDWE	SD-RX-QEL-9949-NL-OP-110MD-CON 24 VDC	693/711	VON
2	EA	SFIC MORTISE CYL.	80-110 X XQ11-948 36-083 36-082-025	622	SCH
1	EA	SFIC RIM CYLINDER	80-116	622	SCH
3	EA	FSIC CORE	91-161 EV B	622	SCH
2	EA	45 DEGREE OFFSET PULL	8145EZHD 18" O	BLK	IVE
2	EA	OH STOP	100S	BLK	GLY
2	EA	SURFACE CLOSER	4040XP	622	LCN
2	EA	MOUNTING PLATE	4040XP-18G SRT	693	LCN
2	EA	DOOR SWEEP	8197BK	BK	ZER
1	EA	THRESHOLD	655BK-223	BK	ZER
2	EA	WIRE HARNESS	CON-26P		SCH
2	EA	WIRE HARNESS	CON-6W		SCH
1	EA	POWER SUPPLY	PS902 BBK 900-2RS 120/240 VAC	LGR	SCE
1	EA	CREDENTIAL READER	PROVIDED BY SECURITY CONTR.		B/O
2	EA	DR POSITION SWITCH	PROVIDED BY SECURITY CONTR.		B/O

PROVIDE HARDWARE FOR ALUMINUM DOORS UNDER THIS SECTION. DELIVER HARDWARE TEMPLATES AND HARDWARE, EXCEPT FIELD APPLIED HARDWARE, TO THE ALUMINUM DOOR AND FRAME MANUFACTURER FOR USE IN FABRICATING DOORS AND FRAMES.

PERIMETER WEATHER AND MEETING STYLE SEALS PROVIDED BY ALUMINUM SECTION.
TOP JAMB ARM MOUNTED DOOR CLOSER - INSTALL DOOR CLOSER ON PUSH SIDE OF THE DOOR.

DESCRIPTION OF OPERATION:

PRESENTING VALID CREDENTIAL TO READER AND/OR REMOTE RELEASE BUTTON WILL RETRACT LATCHES FOR ACCESS.

EMERGENCY ACCESS BY MECHANICAL KEY OVERRIDE.

REQUEST TO EXIT AND DOOR POSITION SWITCHES ARE FOR USE BY ACCESS CONTROL CONTRACTOR.

FREE EGRESS AT ALL TIMES.

130012-59
Montgomery County
Eastern Regional Water Reclamation Facility
Operations Building Renovation

Hardware Set No. AC-02
For use on mark/door #(s):
X113-1

Each to have:

2	EA	CONT. HINGE	112XY EPT	711	IVE
2	EA	POWER TRANSFER	EPT10 CON	622	VON
1	EA	ELEC PANIC HDWE	SD-RX-QEL-9949-EO-CON 24 VDC	711	VON
1	EA	ELEC PANIC HDWE	SD-RX-QEL-9949-NL-OP-110MD-CON 24 VDC	693/711	VON
2	EA	SFIC MORTISE CYL.	80-110 X XQ11-948 36-083 36-082-025	622	SCH
1	EA	SFIC RIM CYLINDER	80-116	622	SCH
3	EA	FSIC CORE	91-161 EV B	622	SCH
2	EA	45 DEGREE OFFSET PULL	8145EZHD 18" O	BLK	IVE
2	EA	OH STOP	100S	BLK	GLY
1	EA	SURFACE CLOSER	4040XP	622	LCN
1	EA	AUTO OPERATOR	4642 WMS 120 VAC	693	LCN
1	EA	MOUNTING PLATE	4040XP-18G SRT	693	LCN
1	EA	WEATHER RING	8310-801		LCN
2	EA	ACTUATOR, TOUCH	8310-853T	630	LCN
2	EA	DOOR SWEEP	8197BK	BK	ZER
1	EA	THRESHOLD	655BK-223	BK	ZER
2	EA	WIRE HARNESS	CON-26P		SCH
2	EA	WIRE HARNESS	CON-6W		SCH
1	EA	POWER SUPPLY	PS902 BBK 900-4RL 120/240 VAC	LGR	SCE
1	EA	CREDENTIAL READER	PROVIDED BY SECURITY CONTR.		B/O
2	EA	DR POSITION SWITCH	PROVIDED BY SECURITY CONTR.		B/O

PROVIDE HARDWARE FOR ALUMINUM DOORS UNDER THIS SECTION. DELIVER HARDWARE TEMPLATES AND HARDWARE, EXCEPT FIELD APPLIED HARDWARE, TO THE ALUMINUM DOOR AND FRAME MANUFACTURER FOR USE IN FABRICATING DOORS AND FRAMES.
PERIMETER WEATHER AND MEETING STYLE SEALS PROVIDED BY ALUMINUM SECTION.
TOP JAMB ARM MOUNTED DOOR CLOSER - INSTALL DOOR CLOSER ON PUSH SIDE OF THE DOOR.

DESCRIPTION OF OPERATION:

PRESENTING VALID CREDENTIAL TO READER AND/OR REMOTE RELEASE BUTTON WILL RETRACT LATCHES AND TURN ON ADA ACTUATOR FOR ACCESS. PRESSING ADA WALL ACTUATOR WILL OPEN THE DOOR.

EMERGENCY ACCESS BY MECHANICAL KEY OVERRIDE.

REQUEST TO EXIT AND DOOR POSITION SWITCHES ARE FOR USE BY ACCESS CONTROL CONTRACTOR.

FREE EGRESS AT ALL TIMES.

130012-59
Montgomery County
Eastern Regional Water Reclamation Facility
Operations Building Renovation

Hardware Set No. EX-AC-01

For use on mark/door #(s):

102-2 102-3

Each to have:

1	EA	VANDL STOREROOM LOCK	ND96JD SPA	626	SCH
1	EA	FSIC CORE	91-161 EV B	626	SCH
1	EA	ELECTRIC STRIKE	PROVIDED BY SECURITY CONTR.		B/O
1	EA	LOCK GUARD	LG14	630	IVE
1	EA	POWER SUPPLY	PROVIDED BY SECURITY CONTR.		B/O
1	EA	CREDENTIAL READER	PROVIDED BY SECURITY CONTR.		B/O
1	EA	DR POSITION SWITCH	PROVIDED BY SECURITY CONTR.		B/O

BALANCE OF HARDWARE EXISTING

FIELD PREP EXISTING DOOR/FRAME TO ACCEPT NEW DOOR HARDWARE.

Hardware Set No. EX-AC-02

For use on mark/door #(s):

X125-1 X133-2

Each to have:

1	EA	VANDL STOREROOM LOCK	ND96JD SPA	626	SCH
1	EA	FSIC CORE	91-161 EV B	626	SCH
1	EA	ELECTRIC STRIKE	PROVIDED BY SECURITY CONTR.		B/O
1	EA	LOCK GUARD	LG14	630	IVE
1	EA	MENDING PLATE	14-2-CW	630	DON
1	EA	POWER SUPPLY	PROVIDED BY SECURITY CONTR.		B/O
1	EA	CREDENTIAL READER	PROVIDED BY SECURITY CONTR.		B/O
1	EA	DR POSITION SWITCH	PROVIDED BY SECURITY CONTR.		B/O

BALANCE OF HARDWARE EXISTING

FIELD PREP EXISTING DOOR/FRAME TO ACCEPT NEW DOOR HARDWARE.

END OF SECTION

SECTION 101423 - PANEL SIGNAGE

PART 1 - GENERAL

1.1 SUMMARY

A. Section Includes:

1. Panel signs.

B. Related Requirements:

1. Section 015000 "Temporary Facilities and Controls" for temporary Project identification signs and for temporary informational and directional signs.
2. Section 101423.16 "Room-Identification Panel Signage" for room-identification signs that are directly attached to the building.
3. Section 220553 "Identification for Plumbing Piping and Equipment" for labels, tags, and nameplates for plumbing systems and equipment.
4. Section 230553 "Identification for HVAC Piping and Equipment" for labels, tags, and nameplates for HVAC systems and equipment.
5. Section 260553 "Identification for Electrical Systems" for labels, tags, and nameplates for electrical equipment.
6. Section 265213 "Emergency and Exit Lighting" for illuminated, self-luminous, and photoluminescent exit sign units.

1.2 DEFINITIONS

- A. Accessible: In accordance with the accessibility standard.

1.3 COORDINATION

- A. Furnish templates for placement of sign-anchorage devices embedded in permanent construction by other installers.

1.4 ACTION SUBMITTALS

A. Product Data:

1. Panel signs.

B. Shop Drawings: For panel signs.

1. Include fabrication and installation details and attachments to other work.

2. Show sign mounting heights, locations of supplementary supports to be provided by other installers, and accessories.
 3. Show message list, typestyles, graphic elements, and layout for each sign at least half size.
 - C. Samples for Initial Selection: For each type of sign assembly, exposed component, and exposed finish.
 1. Include representative Samples of available typestyles and graphic symbols.
 - D. Samples for Verification: For each type of sign assembly showing all components and with the required finish(es), in manufacturer's standard size unless otherwise indicated and as follows:
 1. Panel Signs: Not less than 12 inches square, including corner.
 - E. Product Schedule: For panel signs. Use same designations indicated on Drawings or specified.
 - F. Delegated Design Submittals: For signs indicated in "Performance Requirements" Article.
 1. Include structural analysis calculations for signs indicated to comply with design loads; signed and sealed by the qualified professional engineer responsible for their preparation.
- 1.5 INFORMATIONAL SUBMITTALS
- A. Qualification Data: For Installer.
 - B. Sample Warranty: For special warranty.
- 1.6 CLOSEOUT SUBMITTALS
- A. Maintenance Data: For signs to include in maintenance manuals.
- 1.7 MAINTENANCE MATERIAL SUBMITTALS
- A. Furnish extra materials, from the same product run, that match products installed and that are packaged with protective covering for storage and identified with labels describing contents.
 1. Tools: One set(s) of specialty tools for assembling signs and replacing variable sign components.
- 1.8 QUALITY ASSURANCE
- A. Installer Qualifications: Manufacturer of products.

1.9 FIELD CONDITIONS

- A. Field Measurements: Verify locations of anchorage devices embedded in permanent construction by other installers by field measurements before fabrication, and indicate measurements on Shop Drawings.

1.10 WARRANTY

- A. Special Warranty: Manufacturer agrees to repair or replace components of signs that fail in materials or workmanship within specified warranty period.
 - 1. Failures include, but are not limited to, the following:
 - a. Deterioration of finishes beyond normal weathering.
 - b. Deterioration of embedded graphic image.
 - c. Separation or delamination of sheet materials and components.
 - 2. Warranty Period: Five years from date of Substantial Completion.

PART 2 - PRODUCTS

2.1 PERFORMANCE REQUIREMENTS

- A. Delegated Design: Engage a qualified professional engineer, as defined in Section 014000 "Quality Requirements," to design sign structure and anchorage of sign type(s) on exterior wall according to structural performance requirements.
- B. Structural Performance: Signs and supporting elements are to withstand the effects of gravity and other loads within limits and under conditions indicated.
 - 1. Uniform Wind Load: As indicated on Drawings.
 - 2. Concentrated Horizontal Load: As indicated on Drawings.
 - 3. Other Design Load: As indicated on Drawings.
 - 4. Uniform and concentrated loads need not be assumed to act concurrently.
- C. Thermal Movements: For exterior signs, allow for thermal movements from ambient and surface temperature changes.
 - 1. Temperature Change: 120 deg F, ambient; 180 deg F, material surfaces.
- D. Accessibility Standard: Comply with applicable provisions in ICC A117.1.

2.2 PANEL SIGNS

- A. Panel Sign: Sign with smooth, uniform surfaces; with message and characters having uniform

faces, sharp corners, and precisely formed lines and profiles; and as follows:

1. Solid-Sheet Sign: Aluminum sheet and returns with finish specified in "Surface Finish and Applied Graphics" Subparagraph and as follows:
 - a. Thickness: Manufacturer's standard for size of sign.
 - b. Surface-Applied, Flat Graphics: Applied vinyl film.
 - c. Inset, Cutout Characters: Sign face routed to receive push-through acrylic graphics flush with the sign panel.
2. Mounting: Surface mounted to wall with countersunk flathead through fasteners.
3. Surface Finish and Applied Graphics:
 - a. Integral Aluminum Finish: Anodized color as selected by Architect from full range of industry colors and color densities.
4. Text and Typeface: As indicated on the drawings..
5. Flatness Tolerance: Sign is to remain flat or uniformly curved under installed conditions as indicated on Drawings and within a tolerance of plus or minus 1/16 inch measured diagonally from corner to corner.

2.3 PANEL-SIGN MATERIALS

- A. Aluminum Sheet and Plate: ASTM B209, alloy and temper recommended by aluminum producer and finisher for type of use and finish indicated.
- B. Steel Materials:
 1. Steel Sheet: electrolytic zinc-coated, ASTM A879/A879M, Coating Designation 08Z, with steel-sheet substrate according to ASTM A1008/A1008M, commercial steel, exposed.
 2. Steel Members Fabricated from Plate or Bar Stock: ASTM A529/A529M or ASTM A572/A572M, 42,000-psi minimum yield strength.
 3. For steel exposed to view on completion, provide materials having flat, smooth surfaces without blemishes. Do not use materials whose surfaces exhibit pitting, seam marks, roller marks, rolled trade names, or roughness.
- C. Stainless Steel Sheet: ASTM A240/A240M or ASTM A666, Type 304, stretcher-leveled standard of flatness.
- D. Vinyl Film: UV-resistant vinyl film of nominal thickness indicated, with pressure-sensitive, permanent adhesive on back; die cut to form characters or images as indicated on Drawings and suitable for exterior applications.
- E. Paints and Coatings for Sheet Materials: Inks, dyes, and paints that are recommended by manufacturer for optimum adherence to surface and are UV and water resistant for colors and exposure indicated.

2.4 ACCESSORIES

- A. Fasteners and Anchors: Manufacturer's standard as required for secure anchorage of signs, noncorrosive and compatible with each material joined, and complying with the following unless otherwise indicated:
1. Use concealed fasteners and anchors unless indicated to be exposed.
 2. For exterior exposure, furnish stainless steel devices unless otherwise indicated.
 3. Exposed Metal-Fastener Components, General:
 - a. Fabricated from same basic metal and finish of fastened metal unless otherwise indicated.
 4. Sign Mounting Fasteners:
 - a. Concealed Studs: Concealed (blind), threaded studs welded or brazed to back of sign material or screwed into back of sign assembly unless otherwise indicated.
 - b. Through Fasteners: Exposed metal fasteners matching sign finish, with type of head indicated, and installed in predrilled holes.
 5. Inserts: Furnish inserts to be set by other installers into concrete or masonry work.
- B. Post-Installed Anchors: Fastener systems with bolts of same basic metal as fastened metal, if visible, unless otherwise indicated; with working capacity greater than or equal to the design load, according to an evaluation report acceptable to authorities having jurisdiction, based on ICC-ES AC01 as appropriate for the substrate.
1. Uses: Securing signs with imposed loads to structure.
 2. Type: torque-controlled, adhesive anchor or adhesive anchor.
 3. Material for Interior Locations: Carbon-steel components zinc-plated to comply with ASTM B633 or ASTM F1941, Class Fe/Zn 5, unless otherwise indicated.
 4. Material for Exterior or Interior Locations and Where Stainless Steel Is Indicated: Alloy Group 1 stainless steel bolts, ASTM F593, and nuts, ASTM F594.

2.5 FABRICATION

- A. General: Provide manufacturer's standard sign assemblies according to requirements indicated.
1. Preassemble signs in the shop to greatest extent possible. Disassemble signs and assemblies only as necessary for shipping and handling limitations. Clearly mark units for reassembly and installation; apply markings in locations concealed from view after final assembly.
 2. Mill joints to a tight, hairline fit. Form assemblies and joints exposed to weather to resist water penetration and retention.
 3. Comply with AWS for recommended practices in welding and brazing. Provide welds and brazes behind finished surfaces without distorting or discoloring exposed side. Clean exposed welded and brazed connections of flux, and dress exposed and contact surfaces.
 4. Conceal connections if possible; otherwise, locate connections where they are

- inconspicuous.
- 5. Internally brace signs for stability, to meet structural performance loading without oil-canning or other surface deformation, and for securing fasteners.
- 6. Provide rabbets, lugs, and tabs necessary to assemble components and to attach to existing work. Drill and tap for required fasteners. Use concealed fasteners where possible; use exposed fasteners that match sign finish.
- B. Shop- and Subsurface-Applied Vinyl: Align vinyl film in final position and apply to surface. Firmly press film from the middle outward to obtain good bond without blisters or fishmouths.
- C. Brackets: Fabricate brackets, fittings, and hardware for bracket-mounted signs to suit sign construction and mounting conditions indicated. Modify manufacturer's standard brackets as required.
 - 1. Aluminum Brackets: Factory finish brackets with baked-enamel or powder-coat finish to match sign-background color unless otherwise indicated.

2.6 GENERAL FINISH REQUIREMENTS

- A. Protect mechanical finishes on exposed surfaces from damage by applying a strippable, temporary protective covering before shipping.
- B. Appearance of Finished Work: Noticeable variations in same piece are not acceptable. Variations in appearance of adjoining components are acceptable if they are within the range of approved Samples and are assembled or installed to minimize contrast.
- C. Directional Finishes: Run grain with long dimension of each piece and perpendicular to long dimension of finished trim or border surface unless otherwise indicated.
- D. Organic, Anodic, and Chemically Produced Finishes: Apply to formed metal after fabrication but before applying contrasting polished finishes on raised features unless otherwise indicated.

2.7 ALUMINUM FINISHES

- A. Baked-Enamel or Powder-Coat Finish: AAMA 2603 except with a minimum dry film thickness of 1.5 mils. Comply with coating manufacturer's written instructions for cleaning, conversion coating, and applying and baking finish.

2.8 STAINLESS STEEL FINISHES

- A. Surface Preparation: Remove tool and die marks and stretch lines, or blend into finish.
- B. Polished Finishes: Grind and polish surfaces to produce uniform finish, free of cross scratches.
 - 1. When polishing is completed, passivate and rinse surfaces. Remove embedded foreign matter and leave surfaces chemically clean.

2. Dull Satin Finish: No. 6.

PART 3 - EXECUTION

3.1 EXAMINATION

- A. Examine substrates, areas, and conditions, with Installer present, for compliance with requirements for installation tolerances and other conditions affecting performance of the Work.
- B. Verify that sign-support surfaces are within tolerances to accommodate signs without gaps or irregularities between backs of signs and support surfaces unless otherwise indicated.
- C. Verify that anchorage devices embedded in permanent construction are correctly sized and located to accommodate signs.
- D. Proceed with installation only after unsatisfactory conditions have been corrected.

3.2 INSTALLATION

- A. General: Install signs using mounting methods indicated and according to manufacturer's written instructions.
 - 1. Install signs level, plumb, true to line, and at locations and heights indicated, with sign surfaces free of distortion and other defects in appearance.
 - 2. Install signs so they do not protrude or obstruct according to the accessibility standard.
 - 3. Before installation, verify that sign surfaces are clean and free of materials or debris that would impair installation.
 - 4. Corrosion Protection: Coat concealed surfaces of exterior aluminum in contact with grout, concrete, masonry, wood, or dissimilar metals, with a heavy coat of bituminous paint.
- B. Accessible Signage: Install in locations on walls according to the accessibility standard.
- C. Mounting Methods:
 - 1. Through Fasteners: Drill holes in substrate using predrilled holes in sign as template. Countersink holes in sign if required. Place sign in position and flush to surface. Install through fasteners and tighten.
 - 2. Brackets: Remove loose debris from substrate surface and install backbar or bracket supports in position so that signage is correctly located and aligned.

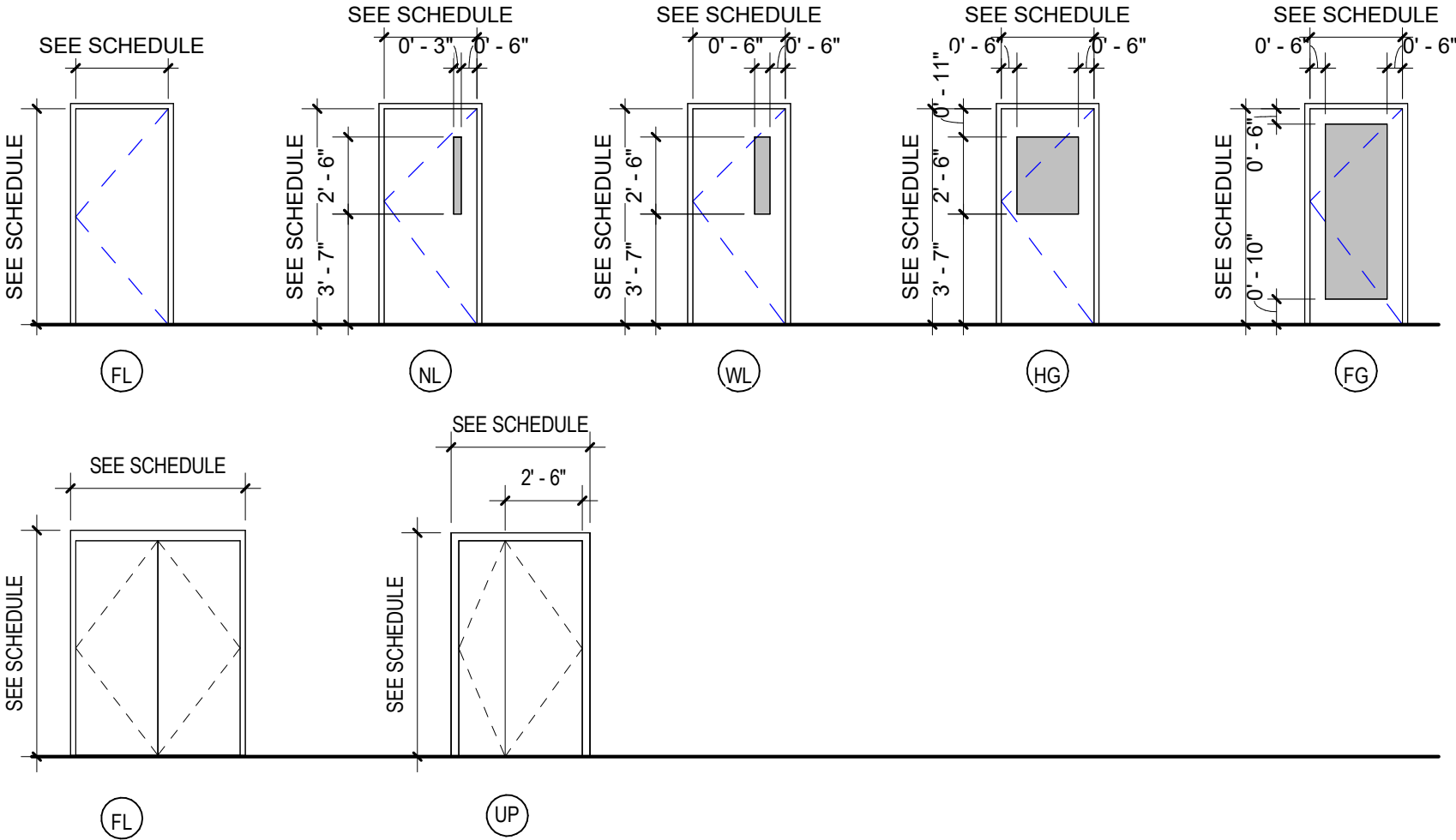
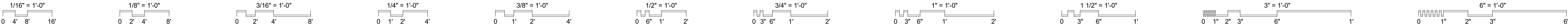
3.3 ADJUSTING AND CLEANING

- A. Remove and replace damaged or deformed signs and signs that do not comply with specified requirements. Replace signs with damaged or deteriorated finishes or components that cannot

be successfully repaired by finish touchup or similar minor repair procedures.

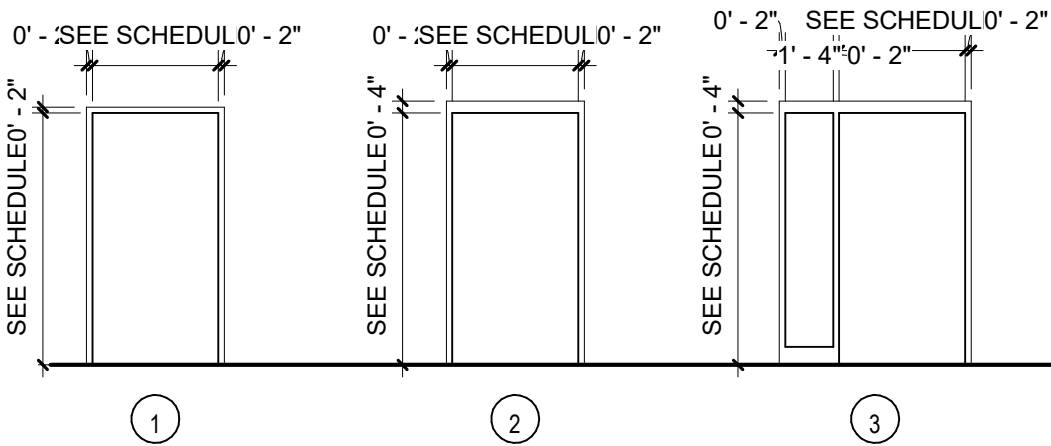
- B. Remove temporary protective coverings and strippable films as signs are installed.
- C. On completion of installation, clean exposed surfaces of signs according to manufacturer's written instructions, and touch up minor nicks and abrasions in finish. Maintain signs in a clean condition during construction and protect from damage until acceptance by Owner.

END OF SECTION 101423



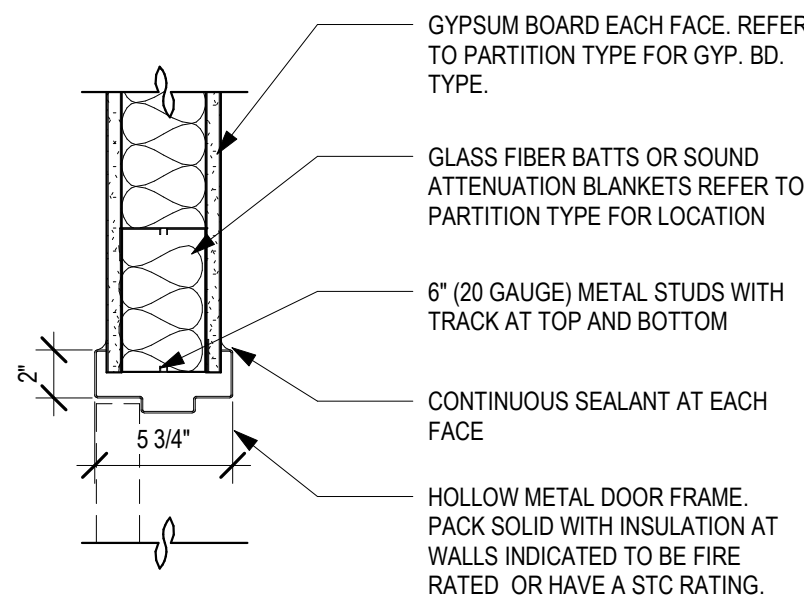
DOOR TYPES

3/16" = 1'-0"



DOOR FRAME TYPES

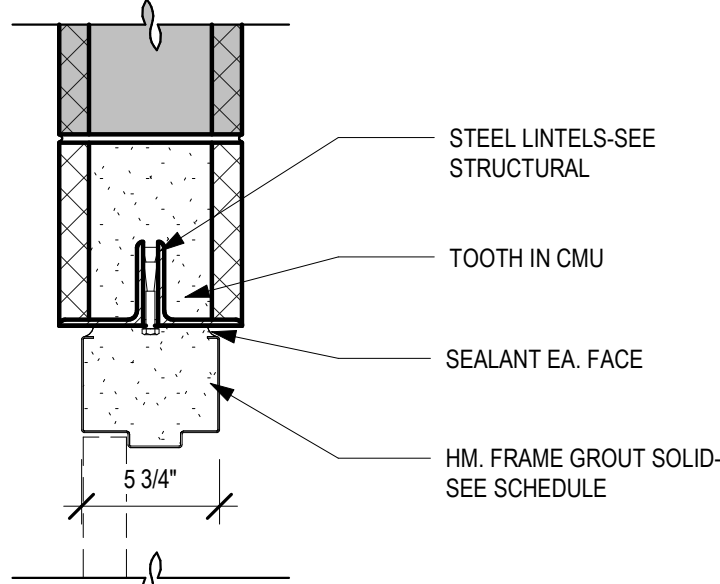
3/16" = 1'-0"



DET - DH GYP BD PARTITION

1

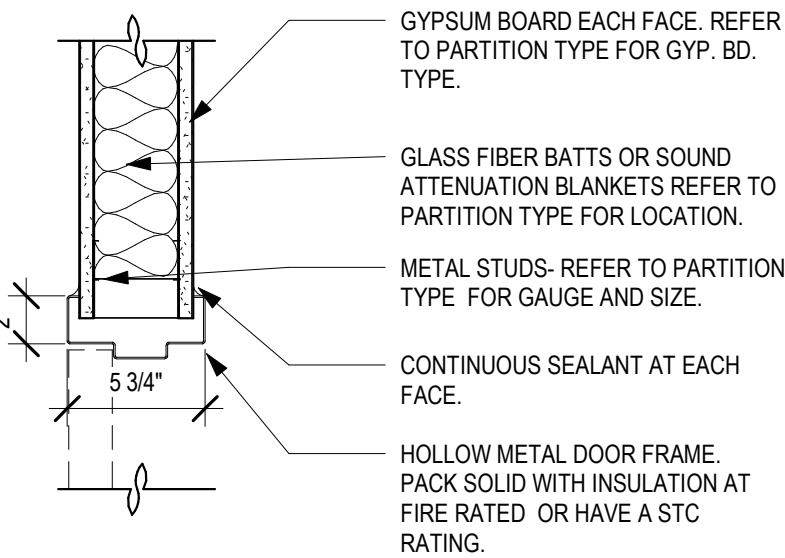
1 1/2" = 1'-0"



DET - DH EXISTING CMU WALL

5

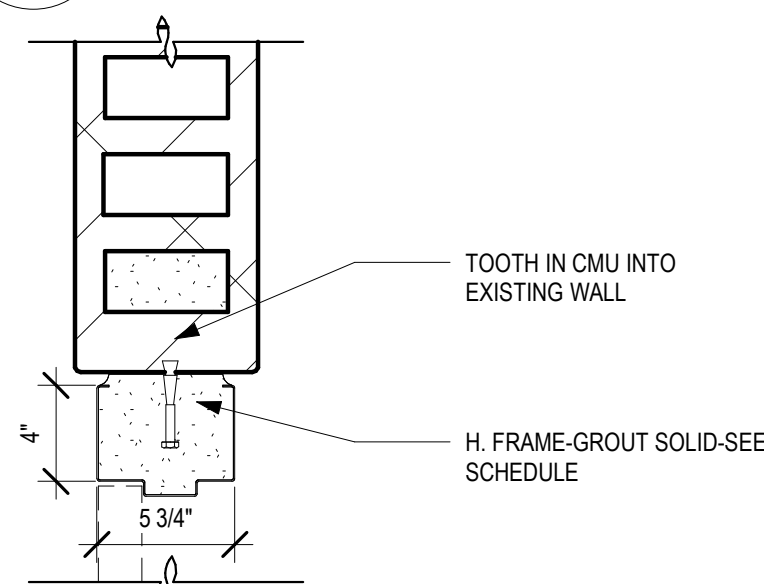
1 1/2" = 1'-0"



DET - DJ GYP BD PARTITION

2

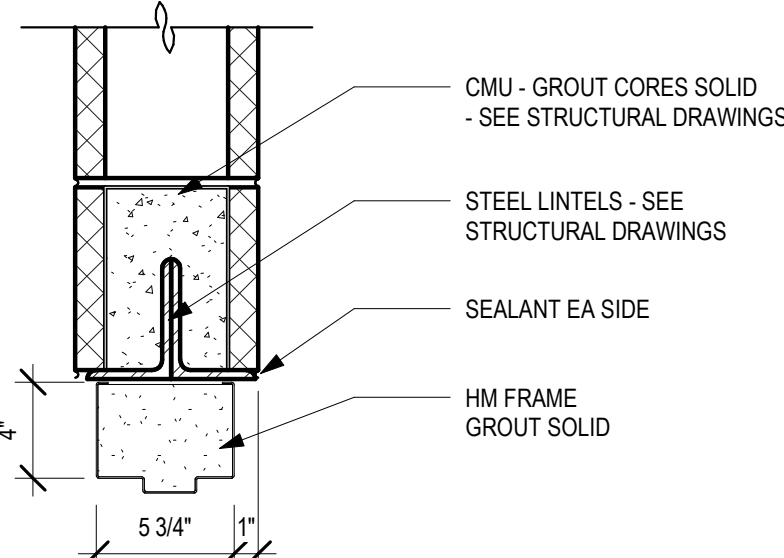
1 1/2" = 1'-0"



DET - DJ EXISTING CMU WALL

6

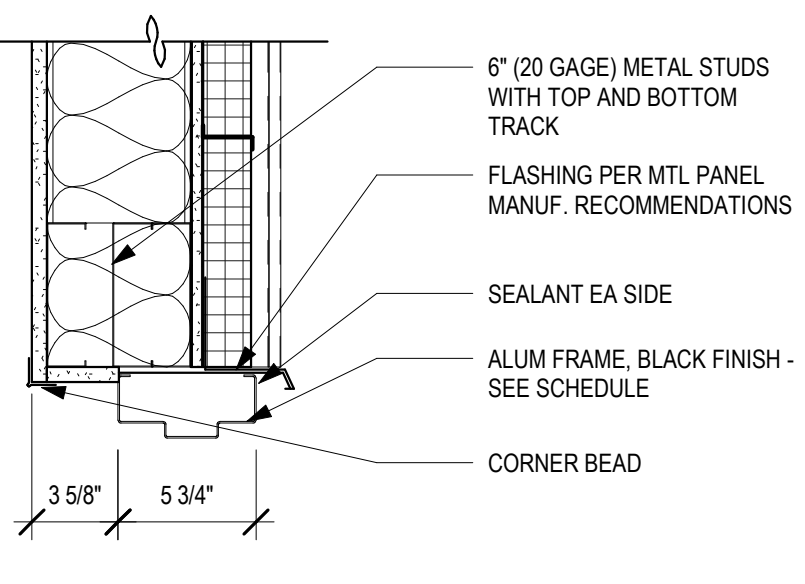
1 1/2" = 1'-0"



DET - DH @ CMU

3

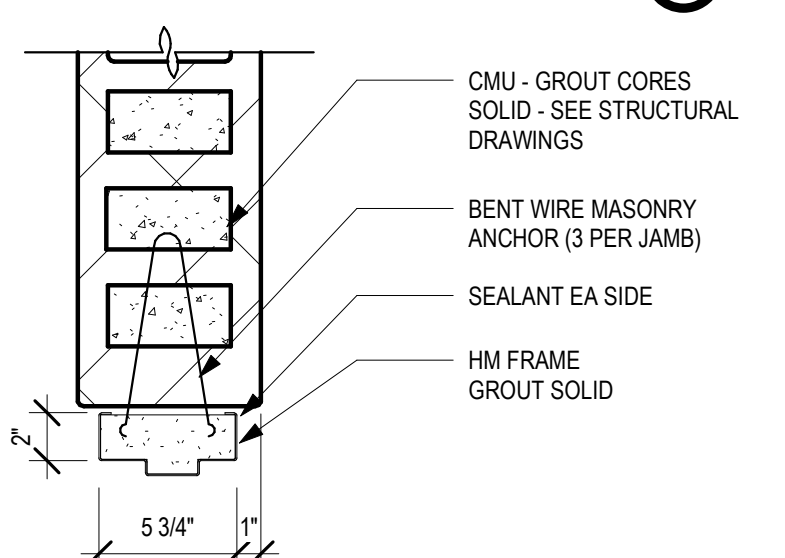
1 1/2" = 1'-0"



DET - DH @ MTL STUD/MTLPANEL

7

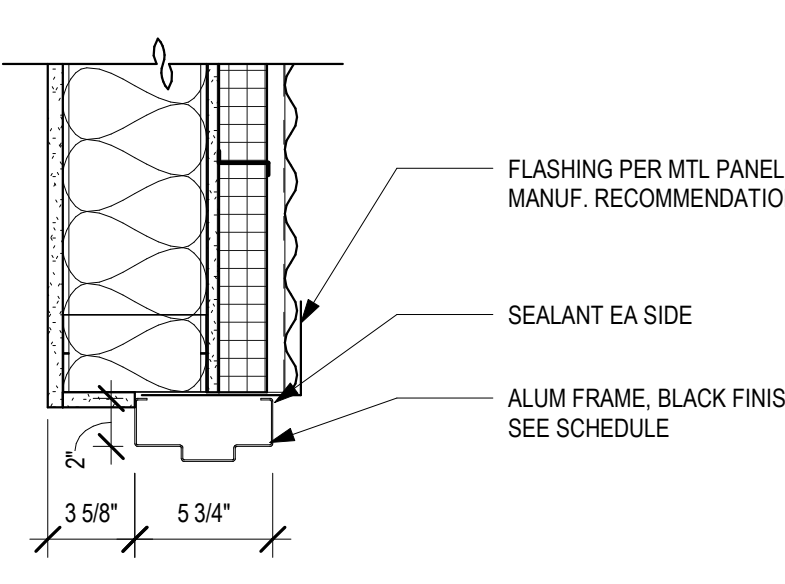
1 1/2" = 1'-0"



DET - DJ @ CMU

4

1 1/2" = 1'-0"



DET - DJ @ MTL STUD/MTLPANEL

8

1 1/2" = 1'-0"

FIRST FLOOR DOOR SCHEDULE

DOOR NO.	DOOR						FRAME				DETAIL			HARDWARE	LABEL	REMARKS
	DIMENSIONS			TYPE	MATERIAL	GLAZING	MATERIAL	TYPE	GLAZING							
	W	H	T													
102-2	3' - 0"	7' - 0"	1 3/4"	FL	HM	-	HM	EXIST	-	-	-	-	EX-AC-01	-	4	
102-3	3' - 0"	7' - 0"	1 3/4"	FL	HM	-	HM	EXIST	-	-	-	-	EX-AC-01	-	4	
103-1	3' - 0"	7' - 0"	1 3/4"	FL	HM	-	HM	2	-	5	6	7/A-542	01	45 MIN		
109-1	4' - 0"	7' - 0"	1 3/4"	FL	HM	-	HM	2	-	1	2	7/A-542	02	-		
111-1	3' - 0"	7' - 0"	1 3/4"	FL	HM	-	HM	1	-	1	2	2/A-542	03	-	3	
111-2	3' - 0"	7' - 0"	1 3/4"	FL	HM	-	HM	1	-	1	2	5/A-542	03	-		
111-3	3' - 0"	7' - 0"	1 3/4"	FL	HM	-	HM	1	-	1	2	2/A-542	04	45 MIN		
113-2	6' - 0"	7' - 0"	1 3/4"	FL	HM	-	HM	2	-	5	6	7/A-542	05	45 MIN		
113-3	6' - 0"	7' - 0"	1 3/4"	FL	HM	-	HM	2	-	1	2	7/A-542	06	45 MIN		
116-1	3' - 0"	7' - 0"	1 3/4"	FG	HM	GL-1T	HM	2	-	5	6	7/A-542	07	45 MIN		
117-1	3' - 0"	7' - 0"	1 3/4"	FL	HM	-	HM	1	-	1	2	2/A-542	08	-	4	
117-2	3' - 0"	7' - 0"	1 3/4"	FL	HM	-	HM	1	-	1	2	5/A-542	03	-		
117-3	3' - 0"	7' - 0"	1 3/4"	FL	HM	-	HM	1	-	1	2	2/A-542	04	45 MIN		
117-4	2' - 6"	7' - 0"	1 3/4"	FL	HM	-	HM	1	-	1	2	5/A-542	08	-		
120-1	3' - 8"	7' - 0"	1 3/4"	FL	HM	-	HM	2	-	5	6	7/A-542	09	45 MIN		
120-2	3' - 0"	7' - 0"	1 3/4"	FL	HM	-	HM	1	-	1	2	7/A-542	04	45 MIN		
123-1	3' - 0"	7' - 0"	1 3/4"	FG	HM	GL-1T	HM	3	GL-1T	1	2	7/A-542	10	-		
123-2	3' - 0"	7' - 0"	1 3/4"	HG	HM	GL-1T	HM	2	-	5	6	7/A-542	11	-		
124-2	3' - 0"	7' - 0"	1 3/4"	HG	HM	GL-1T	HM	2	-	5	6	4/A-542	11	90 MIN		
X104-1	6' - 0"	7' - 0"	1 3/4"	FG	ALUM	GL-2T	ALUM	2	-	5	6	-	AC-01	-	3, 5	
X113-1	6' - 0"	7' - 0"	1 3/4"	FG	ALUM	GL-2T	ALUM	2	-	5	6	-	AC-02	-	2, 3, 5	
X125-1	3' - 4"	7' - 0"	1 3/4"	EXIST	EXIST	EXIST	EXIST	2	-	5	6	-	EX-AC-02	-	4	
X133-2	3' - 4"	7' - 0"	1 3/4"	FL	ALUM	GL-2T	ALUM	2	-	5	6	-	EX-AC-02	-	4	

SECOND FLOOR DOOR SCHEDULE

DOOR NO.	DOOR						FRAME				DETAIL			HARDWARE	LABEL	REMARKS
	DIMENSIONS			TYPE	MATERIAL	GLAZING	MATERIAL	TYPE	GLAZING	HEAD	JAMB	SILL				
	W	H	T													
204-1	3' - 0"	7' - 0"	1 3/4"	FL	HM	-	HM	2	-	5	6	7/A-542	12	45 MIN		
206-1	3' - 0"	7' - 0"	1 3/4"	HG	HM	GL-1T	HM	2	-	5	6	7/A-542	13	-		
206-2	3' - 0"	7' - 0"	1 3/4"	HG	HM	GL-1T	HM	2	-	5	6	7/A-542	13	-		
210-1	3' - 0"	7' - 0"	1 3/4"	FL	HM	-	HM	2	-	5	6	7/A-542	14	45 MIN		
214-1	3' - 0"	7' - 0"	1 3/4"	FL	HM	-	HM	1	-	1	2	6/A-542	15	-		
215-1	6' - 0"	7' - 0"	1 3/4"	FG	HM	GL-1T	HM	2	-	5	6	1/A-542	16	-		
217-1	3' - 0"	7' - 0"	1 3/4"	FL	HM	-	HM	1	-	1	2	6/A-542	15	-		
218-1	3' - 0"	7' - 0"	1 3/4"	FL	HM	-	HM	1	-	1	2	6/A-542	15	-		
221-1	3' - 0"	7' - 0"	1 3/4"	FL	HM	-	HM	1	-	1	2	6/A-542	15	-		
222-1	3' - 0"	7' - 0"	1 3/4"	FL	HM	-	HM	1	-	1	2	6/A-542	15	-		
223-1	3' - 0"	7' - 0"	1 3/4"	FL	HM	-	HM	2	-	5	6	2/A-542	17	-	1	

DOOR SCHEDULE REMARKS

1. PROVIDE AUTOMATIC DOOR OPERATOR 48" ABOVE THE FLOOR. REFER TO ELECT DWGS.
2. PROVIDE ROUGH IN FOR FUTURE CARD READER ACCESS, REFER TO ELECT DWGS.
3. EXISTING HM DOOR & FRAME TO REMAIN. PROVIDE ROUGH-IN FOR FUTURE ELECTRIC STRIKE & CARD READER, REFER TO ELECT DWGS.
4. PROVIDE DOOR BELL PUSH BUTTON AT 3'-6" OC ON RIGHT SIDE OF DOOR, REFER TO ELECT DWGS.

GENERAL NOTES

- A. DOOR DETAILS ON SHEET A-601.
- B. REFER TO SPECIFICATIONS FOR GLAZING TYPES.
- C. REFER TO SHEET A-620 FOR DOOR AND FRAME FINISH.



THOMAS W. GATES

ARC.9812169

EXP. 12/31/2025

SPGB Architects
4333-A TULLER ROAD
DUBLIN, OHIO 43017
PHONE: (614) 771-8863

DESIGNED BY:
SPGB ARCHITECTS

CONSTRUCTED BY:

START DATE:

COMPLETION DATE:

SUBMITTAL		REVISION RECORD		No.	DATE	DESCRIPTION	APPVD.	DATE
DATE	DESCRIPTION							
8/08/2025	ADDENDUM 01			1				
8/21/2025	ADDENDUM 02			2				

DOOR SCHEDULE, TYPES & DETAILS

**Eastern Regional Water
Reclamation Facility Operations
Building Renovation**

SHEET NO.

A-601

PROJ NO.: 130012-59

DATE: 6/25/2025