

Addendum



DATE: 6/1/2026

615 Woodside Drive, Englewood, Ohio 45322

T 937.836.8898 F 937.832.3696

PROJECT: Greenville National Bank Renovation

www.app-arch.com

PROJECT ADDRESS: 446 S Broadway Street
Greenville, Ohio 45331

114 W. 4th Street
Greenville, Ohio 45332

ADDENDUM NO. 2

RECEIPT OF THIS ADDENDUM MUST BE NOTED ON THE FORM OF PROPOSAL

TO ALL BIDDERS:

This addendum supplements and amends the original Plans and Specifications and shall be taken into account in preparing proposals and shall become part of the Contract Documents.

ARCHITECTURAL SPECIFICATIONS:

ITEM A1 07 5300 ELASTOMERIC MEMBRANE ROOFING
1. Revised specification section.

GENERAL DRAWINGS:

ITEM G1 SHEET G0.1 – COVER SHEET
1. Added Sheet A1.10 to drawing index.

ARCHITECTURAL DRAWINGS:

ITEM A1 SHEET A1.10 – ROOF PLANS
1. Added sheet to drawing set.

END OF ADDENDUM NO. 2

ATTACHMENTS: Specifications
 07 5300 ELASTOMERIC MEMBRANE ROOFING

 Drawings
 G0.1
 A1.10

**SECTION 07 5300
ELASTOMERIC MEMBRANE ROOFING**

(REVISED SECTION)

PART 1 GENERAL

2.01 SECTION INCLUDES

- A. Elastomeric roofing membrane (EPDM) application.
- B. Insulation, tapered.
- C. Cover boards.
- D. Roofing stack boots and walkway pads.

2.02 RELATED REQUIREMENTS

2.03 REFERENCE STANDARDS

- A. ASTM C1177/C1177M - Standard Specification for Glass Mat Gypsum Substrate for Use as Sheathing; 2017.
- B. ASTM C1289 - Standard Specification for Faced Rigid Cellular Polyisocyanurate Thermal Insulation Board; 2023a.
- C. ASTM D4637/D4637M - Standard Specification for EPDM Sheet Used in Single-Ply Roof Membrane; 2015, with Editorial Revision (2022).
- D. FM (AG) - FM Approval Guide; Current Edition.
- E. FM DS 1-28 - Wind Design; 2015, with Editorial Revision (2025).
- F. UL (DIR) - Online Certifications Directory; Current Edition.

2.04 SUBMITTALS

- A. See Section 01 3000 - Administrative Requirements for submittal procedures.
- B. Product Data: Provide data indicating membrane materials, flashing materials, insulation, vapor retarder, surfacing, and fasteners.
- C. Shop Drawings: Indicate joint or termination detail conditions, conditions of interface with other materials, and setting plan for tapered insulation.
- D. Manufacturer's Certificate: Certify that products meet or exceed specified requirements.
- E. Manufacturer's Installation Instructions: Indicate membrane seaming precautions and perimeter conditions requiring special attention.
- F. Installer's qualification statement.
- G. Warranty: Submit manufacturer warranty and ensure forms have been completed in Owner's name and registered with manufacturer.

2.05 QUALITY ASSURANCE

- A. Installer Qualifications: Company specializing in performing the work of this section with minimum three years documented experience.
- B. Pre-Installation Conference:
 - 1. Before start of roofing work, Contractor shall hold a meeting to discuss the proper installation of materials and requirements to achieve the warranty.

2. Review methods and procedures related to roofing installation, including Manufacturer's written instructions.
3. Examine deck substrate conditions and finishes, including flatness and fastening.
4. Review temporary protection requirements for roofing system during and after installation.

2.06 DELIVERY, STORAGE, AND HANDLING

- A. Deliver materials in manufacturer's original containers, dry and undamaged, with seals and labels intact.
- B. Store materials in weather protected environment, clear of ground and moisture.
- C. Ensure storage and staging of materials does not exceed static and dynamic load-bearing capacities of roof decking.
- D. Protect foam insulation from direct exposure to sunlight.

2.07 FIELD CONDITIONS

- A. Do not apply roofing membrane during unsuitable weather.
- B. Do not apply roofing membrane to damp or frozen deck surface or when precipitation is expected or occurring.
- C. Do not expose materials vulnerable to water or sun damage in quantities greater than can be weatherproofed the same day.
- D. Schedule applications so that no partially completed sections of roof are left exposed at end of workday.

2.08 WARRANTY

- A. See Section 01 7800 - Closeout Submittals for additional warranty requirements.
- B. Special Warranty: Manufacturer agrees to repair or replace components of roofing system that fail in materials or workmanship within specified warranty period.
 1. Special warranty includes roof membrane, base flashings, and roof insulation, fasteners, substrate board, walkway products, and other components of roofing system.
 2. Warranty Period: 20 years from Date of Substantial Completion.
- C. Special Project Warranty: Submit roofing Installer's warranty, on warranty form at end of this Section, signed by Installer, covering the Work of this Section, including all components of roofing system such as roof membrane, base flashing, roof insulation, fasteners, cover boards, substrate boards, and walkway products, for the following warranty period:
 1. Warranty Period: Two years from Date of Substantial Completion.

PART 2 PRODUCTS

3.01 MANUFACTURERS

- A. EPDM Membrane Materials:
 1. Elevate Commercial Building Products RubberGard EPDM: www.elevatecommercialbp.com/#sle.(Basis of Design).
 2. Carlisle SynTec Systems: www.carlisle-syntec.com/#sle.
 3. Johns Manville: www.jm.com/#sle.
 4. Substitutions: See Section 01 6000 - Product Requirements.
- B. Source Limitations: Obtain components for roofing system from roof membrane manufacturer or manufacturers approved by roof membrane manufacturer.

3.02 ROOFING - UNBALLASTED APPLICATIONS

- A. Elastomeric Membrane Roofing: Single-ply membrane, fully adhered installation.

- B. Roofing Assembly Requirements:
 - 1. Roof Covering External Fire Resistance Classification: UL (DIR) certified Class B.
 - 2. Factory Mutual Classification: Class 1 and windstorm resistance of 1-90, in accordance with FM DS 1-28.
- C. Acceptable Insulation Types - Polyisocyanurate Tapered: Type that meets requirements and is approved by membrane manufacturer for application.

3.03 ROOFING MEMBRANE AND ASSOCIATED MATERIALS

- A. Membrane: Ethylene-propylene-diene-monomer (EPDM); non-reinforced; complying with minimum properties of ASTM D4637/D4637M.
 - 1. Thickness: 60 mil, 0.06 inch (1.5 mm), minimum.
 - 2. Sheet Width: 76 inches (1,930 mm), maximum.
 - a. Adhered Application: Limit width to 120 inches (3,048 mm), maximum, when ambient temperatures are less than 40 degrees F (4.4 degrees C) for extended period of time during installation.
 - 3. Color: Black.
- B. Seaming Materials: As recommended by membrane manufacturer.
- C. Flexible Flashing Material: Same material as membrane.

3.04 COVER BOARDS

- A. Cover Boards: Glass-mat faced gypsum panels complying with ASTM C1177/C1177M.
 - 1. Thickness: 1/2 inch (12.7 mm). fire-resistant.
 - 2. Products:
 - a. Georgia-Pacific; DensDeck StormX Roof Boards with EONIC Technology:
www.densdeck.com/#sle.
 - b. National Gypsum; DEXcell.
 - c. Substitutions: See Section 01 6000 - Product Requirements.

3.05 INSULATION

- A. Polyisocyanurate (ISO) Board Insulation: Rigid cellular foam, complying with ASTM C1289.
 - 1. Classifications:
 - a. Type II: Faced with either cellulosic facers or glass fiber mat facers on both major surfaces of the core foam.
 - 1) Class 1 - Faced with glass fiber reinforced cellulosic facers on both major surfaces of the core foam.
 - 2) Compressive Strength: Classes 1-2-3, Grade 2 - 20 psi (138 kPa), minimum.
 - 3) Thermal Resistance, R-value (RSI-value): At 1-1/2 inches (38 mm) thick; Class 1, Grades 1-2-3 - 8.4 (1.48) at 75 degrees F (24 degrees C).
 - 2. Base Board Thickness: As required for roof slope.
 - 3. Tapered Boards: As indicated in the drawings.
 - a. Tapered slope as indicated; minimum thickness 1/4 inch (6.35 mm); fabricate of fewest layers possible.
 - 4. Board Edges: Square.

3.06 ACCESSORIES

- A. Stack Boots: Prefabricated flexible boot and collar for pipe stacks through membrane; same material as membrane.
- B. Insulation Joint Tape: Glass fiber reinforced type as recommended by insulation manufacturer, compatible with roofing materials; 6 inches (152 mm) wide; self adhering.
- C. Membrane Adhesive: As recommended by membrane manufacturer.

- D. Insulation Adhesive: As recommended by insulation manufacturer.
- E. Walkway Pads:
 - 1. Composition: Roofing membrane manufacturer's standard or Pad of UV Resistant, embossed surface to provide slip-resistance, 9/16" high open grid system.
 - 2. Size: 30 by 30 inches.

PART 3 EXECUTION

4.01 EXAMINATION

- A. Verify that surfaces and site conditions are ready to receive work.
- B. Verify deck is supported and secure.
- C. Verify deck is clean and smooth, flat, free of depressions, waves, or projections, properly sloped and suitable for installation of roof system.
- D. Verify deck surfaces are dry and free of snow or ice.
- E. Verify that roof openings, curbs, and penetrations through roof are solidly set, and cant strips are in place.

4.02 PREPARATION - WOOD DECK

- A. Verify flatness and tightness of joints in wood decking; fill knot holes with latex filler.
- B. Any wet or damaged materials to be removed prior to installation.

4.03 INSTALLATION OF INSULATION, UNDER MEMBRANE

- A. Attachment of Insulation: Embed insulation in adhesive in full contact, in accordance with roofing and insulation manufacturers' instructions.
- B. Cover Boards: Mechanically fasten cover boards in accordance with roofing manufacturer's instructions and FM (AG) Factory Mutual requirements.
- C. Lay subsequent layers of insulation with joints staggered minimum 6 inches (152 mm) from joints of preceding layer.
- D. Place tapered insulation to the required slope pattern in accordance with manufacturer's instructions.
- E. Lay boards with edges in moderate contact without forcing. Cut insulation to fit neatly to perimeter blocking and around penetrations through roof.
- F. Tape joints of insulation in accordance with roofing and insulation manufacturers' instructions.
- G. At roof drains, use factory-tapered boards to slope down to roof drains over a distance of 18 inches (457 mm).

4.04 INSTALLATION - MEMBRANE

- A. Roll out membrane, free from wrinkles or tears. Place sheet into place without stretching.
- B. Shingle joints on sloped substrate in direction of drainage.
- C. Overlap edges and ends and seal seams by contact adhesive, minimum 3 inches (76 mm). Seal permanently waterproof. Apply uniform bead of sealant to joint edge.
- D. At intersections with vertical surfaces:
 - 1. Extend membrane over cant strips and up a minimum of 4 inches (102 mm) onto vertical surfaces.
 - 2. Fully adhere flexible flashing over membrane and up to nailing strips.
- E. Around roof penetrations, seal flanges and flashings with flexible flashing.

- F. Coordinate installation of roof drains and sumps and related flashings.

4.05 INSTALLATION - WALKWAY PADS

- A. Install walkway pads. Space pad joints to permit drainage.

4.06 FIELD QUALITY CONTROL

- A. See Section 01 4000 - Quality Requirements for additional requirements.
- B. Inspection by Manufacturer: Provide final inspection of the roofing system by a Technical representative employed by the roofing system Manufacturer specifically to inspect installation for warranty purposes.
- C. Perform all corrections necessary for issuance of warranty.

4.07 CLEANING

- A. See Section 01 7000 - Execution and Closeout Requirements for additional requirements.
- B. Remove bituminous markings from finished surfaces.
- C. In areas where finished surfaces are soiled by work of this section, consult manufacturer of surfaces for cleaning advice and comply with their documented instructions.
- D. Repair or replace defaced or damaged finishes caused by work of this section.

4.08 PROTECTION

- A. Protect installed roofing and flashings from construction operations.
- B. Where traffic must continue over finished roof membrane, protect surfaces using durable materials.

END OF SECTION

This page intentionally left blank

Renovation Greenville National Bank Main Branch

446 SOUTH BROADWAY STREET, GREENVILLE, OH 45331
AND 114 WEST 4TH STREET, GREENVILLE, OH 45331

ARCHITECT

App Architecture

615 Woodside Drive
Englewood, Ohio 45322
(937) 836-8898

MECHANICAL & ELECTRICAL ENGINEERS

Nauman & Zelinski, LLC

204 South Ludlow Street, Suite 400
Dayton, Ohio 45402
(937) 223-3821

STRUCTURAL ENGINEER

Reis Engineering, LLC

5630 Brooks Run
Liberty Twp, Ohio 45011
(513) 907-4134

DRAWING INDEX

GENERAL		FIRE PROTECTION	
G0.1	COVER SHEET	F0.1	LEGEND AND DETAILS
G0.2	CODE REVIEW	F1.1	BASEMENT FLOOR PLAN
G0.3	PHASING PLAN		
G0.4	PHASING PLAN		
ARCHITECTURAL		PLUMBING	
A0.1	ABBREVIATIONS AND SYMBOLS	P0.1	LEGENDS AND FIXTURE SCHEDULES
A0.2	FINISH SCHEDULES	P0.2	MATERIAL SCHEDULES
A0.3	DOOR SCHEDULES	P1.1	BASEMENT DEMOLITION PLAN
A0.4	WALL TYPES	P1.2	FIRST FLOOR DEMOLITION PLAN
A0.5	STOREFRONT SCHEDULE	P1.3	SECOND FLOOR DEMO PLAN
A0.6	DOOR AND WINDOW DETAILS	P2.1	BASEMENT NEW WORK PLAN
A0.7	DOOR AND WINDOW DETAILS	P2.2	FIRST FLOOR NEW WORK PLAN
A0.8	DOOR AND WINDOW DETAILS	P2.3	SECOND FLOOR NEW WORK PLAN
A0.9	INTERIOR DETAILS	P3.1	DETAILS
A1.1	BASEMENT DEMOLITION PLAN	P4.1	SOIL, WASTE, AND VENT DIAGRAMS
A1.2	BASEMENT REFERENCE PLAN		
A1.3	BASEMENT DIMENSION PLAN		
A1.4	FIRST FLOOR DEMOLITION PLAN	MECHANICAL	
A1.5	FIRST FLOOR REFERENCE PLAN	H0.1	LEGENDS, SCHEDULES, AND NOTES
A1.6	FIRST FLOOR DIMENSION PLAN	H0.2	MATERIAL AND EQUIPMENT SCHEDULES
A1.7	SECOND FLOOR DEMOLITION PLAN	H0.3	ROOFTOP UNIT SCHEDULE
A1.8	SECOND FLOOR REFERENCE PLAN	H1.0	BASEMENT DEMOLITION PLAN
A1.9	SECOND FLOOR DIMENSION PLAN	H1.1	FIRST FLOOR DEMOLITION PLAN
A1.10	ROOF PLANS	H1.2	SECOND FLOOR DEMOLITION PLAN
A2.1	BASEMENT DEMOLITION REFLECTED CEILING PLAN	H1.3	ROOF DEMOLITION PLAN
A2.2	BASEMENT REFLECTED CEILING PLAN	H2.0	BASEMENT NEW WORK PLAN
A2.3	FIRST FLOOR DEMOLITION REFLECTED CEILING PLAN	H2.1	FIRST FLOOR NEW WORK PLAN
A2.4	FIRST FLOOR REFLECTED CEILING PLAN	H2.2	SECOND FLOOR NEW WORK PLAN
A2.5	SECOND FLOOR DEMOLITION REFLECTED CEILING PLAN	H2.3	ROOF NEW WORK PLAN
A2.6	SECOND FLOOR REFLECTED CEILING PLAN	H3.1	SECTIONS
A3.1	EXTERIOR ELEVATIONS	H4.1	DETAILS
A5.1	EXTERIOR DETAILS	H4.2	DETAILS
A6.1	VERTICAL CIRCULATION	H4.3	DETAILS
A7.1	TOILET INTERIOR ELEVATIONS	H4.4	DETAILS
A7.2	TOILET INTERIOR ELEVATIONS	H5.1	TEMPERATURE CONTROLS DIAGRAMS & SEQUENCES
A7.3	TOILET INTERIOR ELEVATIONS	H5.2	TEMPERATURE CONTROLS DIAGRAMS & SEQUENCES
A7.4	INTERIOR ELEVATIONS	H6.1	VENTILATION
A7.5	INTERIOR ELEVATIONS		
A7.6	INTERIOR ELEVATIONS	ELECTRICAL	
A7.7	INTERIOR ELEVATIONS	E0.1	LEGENDS
A8.1	CASEWORK DETAILS	E0.2	BANK BASEMENT PANEL SCHEDULES
A8.2	CASEWORK DETAILS	E0.3	BANK FIRST FLOOR PANEL SCHEDULES
A8.3	CASEWORK DETAILS	E0.4	BANK SECOND FLOOR PANEL SCHEDULES
A9.1	BASEMENT FINISH FLOOR PLAN	E0.5	LOAN CENTER PANEL SCHEDULES
A9.2	FIRST FLOOR FINISH PLAN	E0.6	SINGLE LINE DIAGRAM
A9.3	SECOND FLOOR FINISH PLAN	E0.7	SCHEDULES
		E1.0	BASEMENT FLOOR DEMO PLAN
		E1.1	FIRST FLOOR DEMO PLAN
		E1.2	SECOND FLOOR DEMO PLAN
		E2.0	BASEMENT LIGHTING PLAN
		E2.1	FIRST FLOOR LIGHTING PLAN
		E2.2	NEW LIGHTING PLAN
		E3.0	NEW BASEMENT POWER PLAN
		E3.1	NEW FIRST FLOOR POWER PLAN
		E3.2	NEW SECOND FLOOR POWER PLAN
		E4.0	NEW BASEMENT SYSTEMS PLAN
		E4.1	NEW FIRST FLOOR SYSTEMS PLAN
		E4.2	NEW SECOND FLOOR SYSTEMS PLAN
		E5.0	NEW ATTIC/ROOF PLAN
STRUCTURAL			
S0.1	GENERAL NOTES		
S0.2	GENERAL NOTES		
S0.3	SPECIAL INSPECTIONS		
S1.0	BASEMENT PLAN		
S1.1	FIRST FLOOR PLAN		
S1.2	SECOND FLOOR PLAN		
S1.3	ROOF PLAN		
S2.0	ELEVATOR SECTIONS		
S2.1	ELEVATOR SECTIONS		
S2.2	STRUCTURAL DETAILS		
S2.3	STRUCTURAL DETAILS		

App Architecture
creative focused design

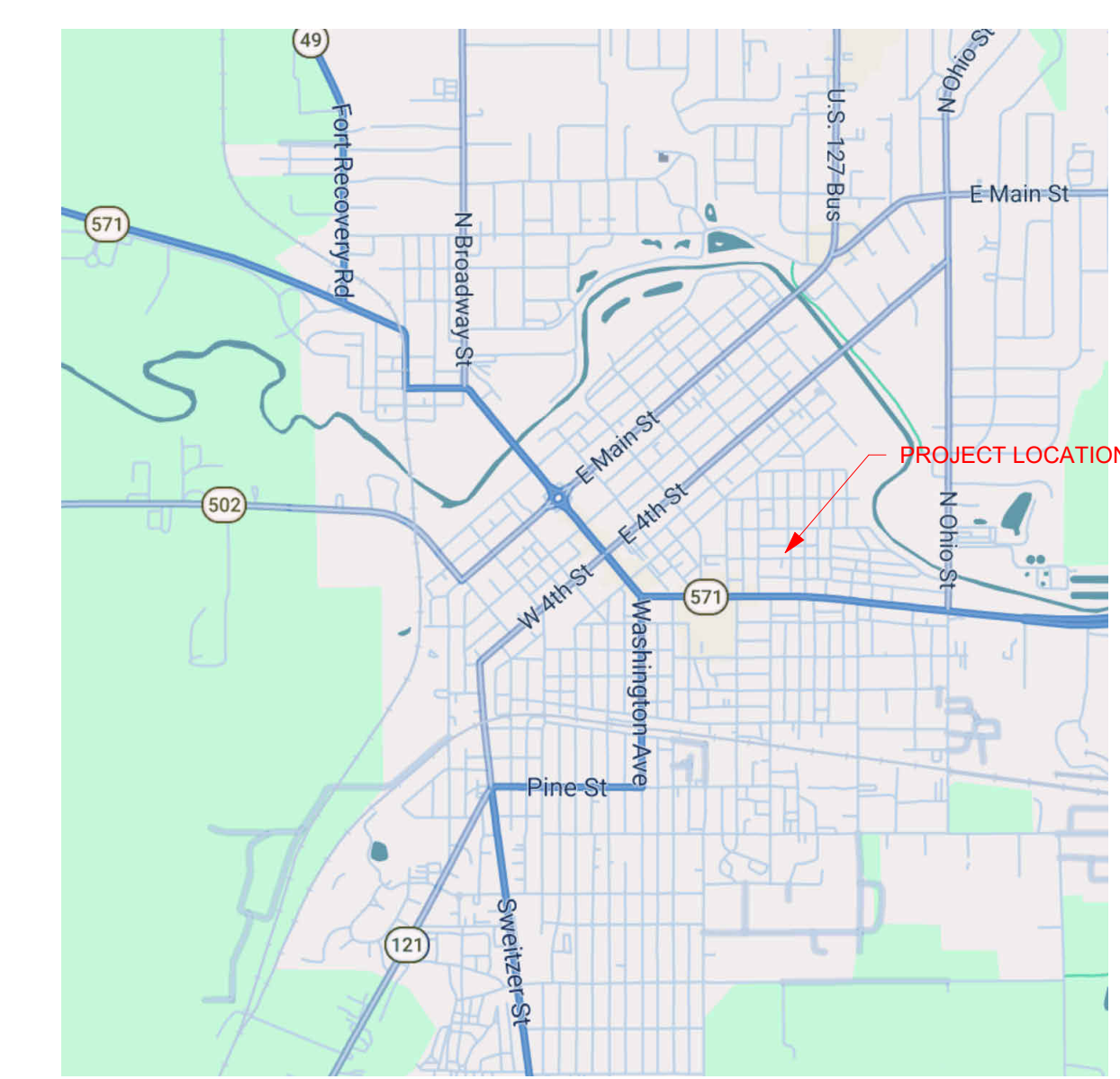
615 Woodside Drive, Englewood, Ohio 45322
T 937.836.8898 F 937.832.3696
www.app-arch.com

STATE OF OHIO
REGISTERED ARCHITECT
WEBER
9675
Marianne L. Weber, License #9675
Expiration Date 12/31/2027

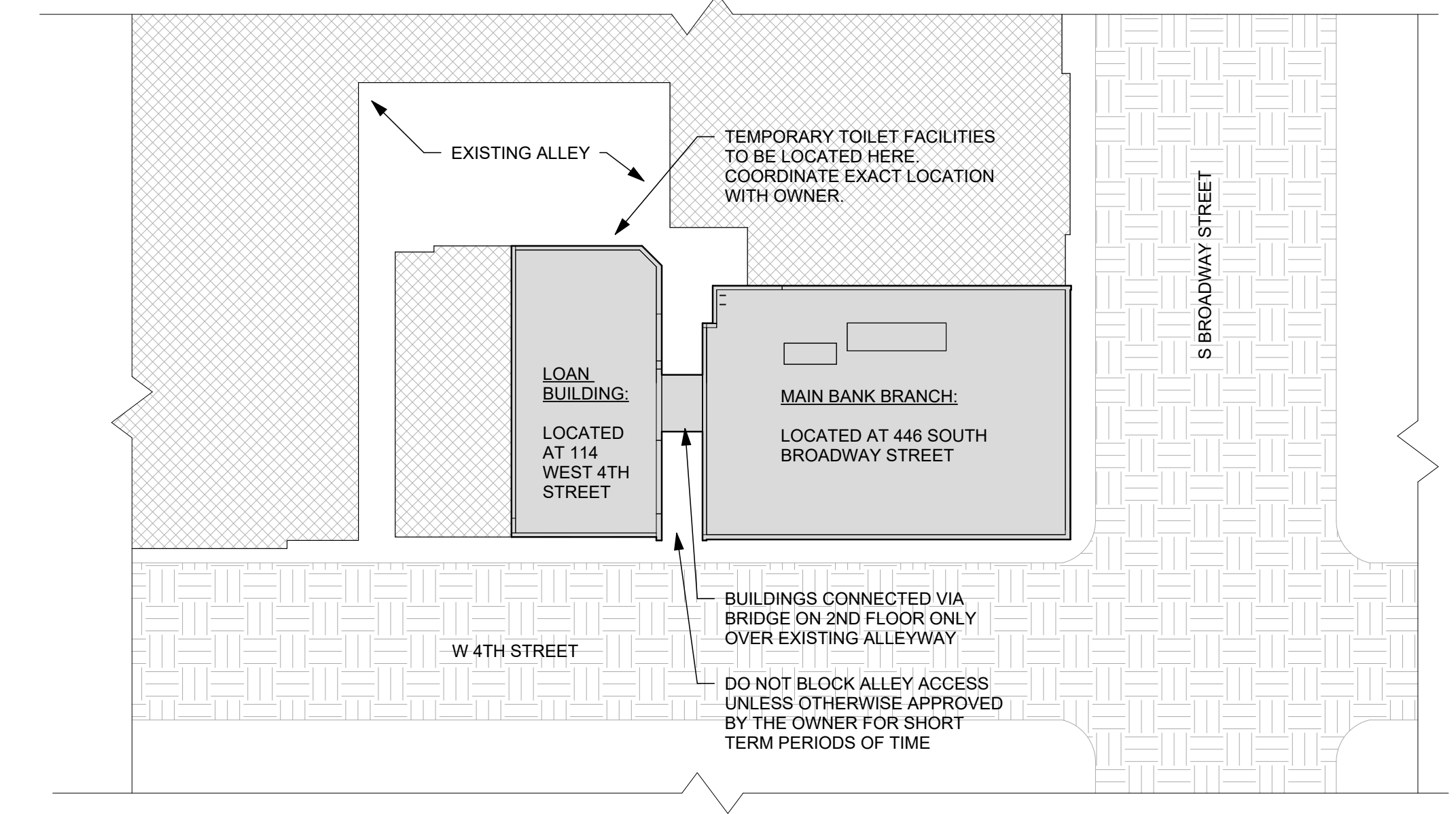
Renovation
**Greenville National Bank Main
Branch**

446 SOUTH BROADWAY STREET, GREENVILLE, OH 45331
AND 114 WEST 4TH STREET, GREENVILLE, OH 45331

VICINITY MAP



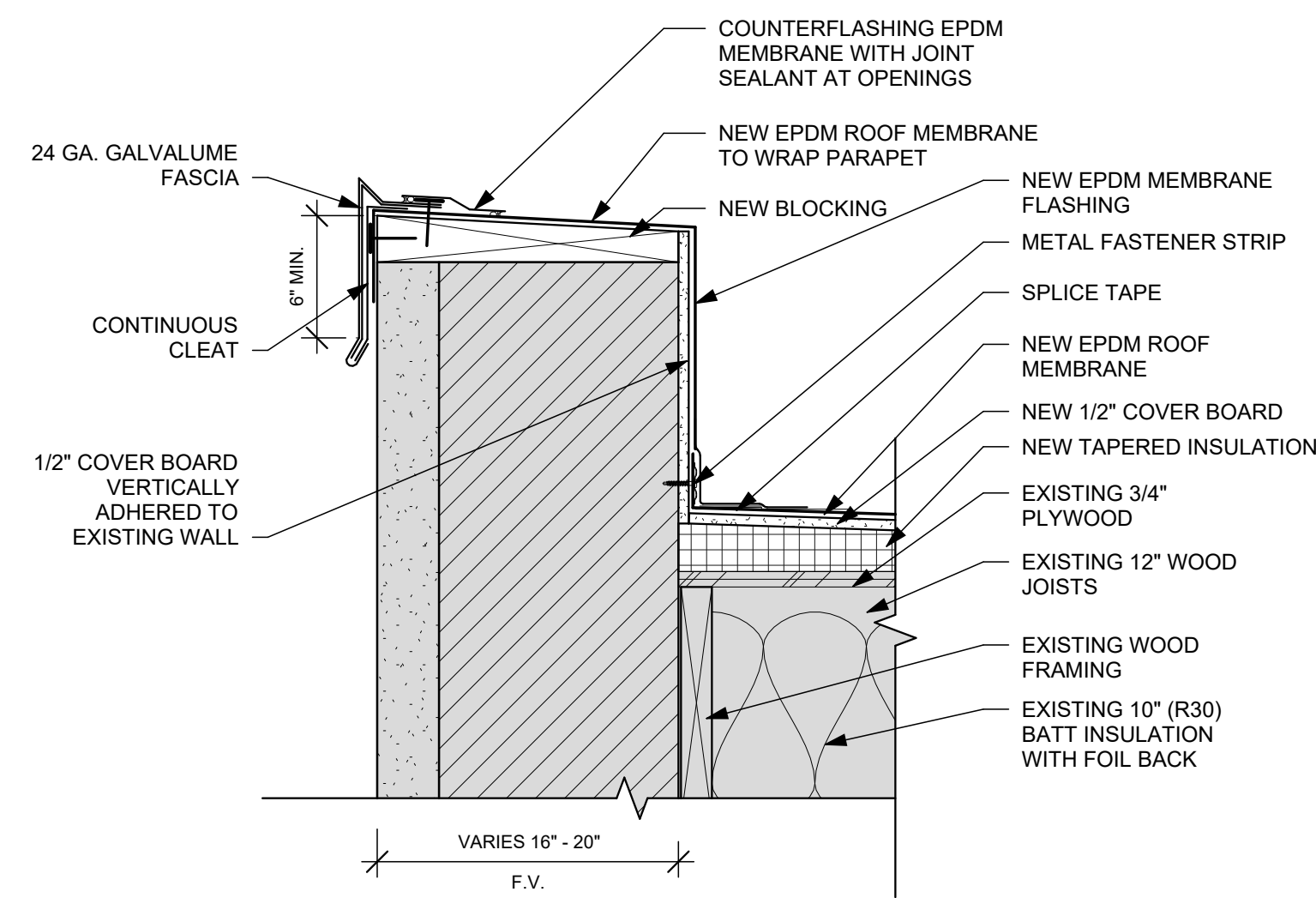
SITE PLAN



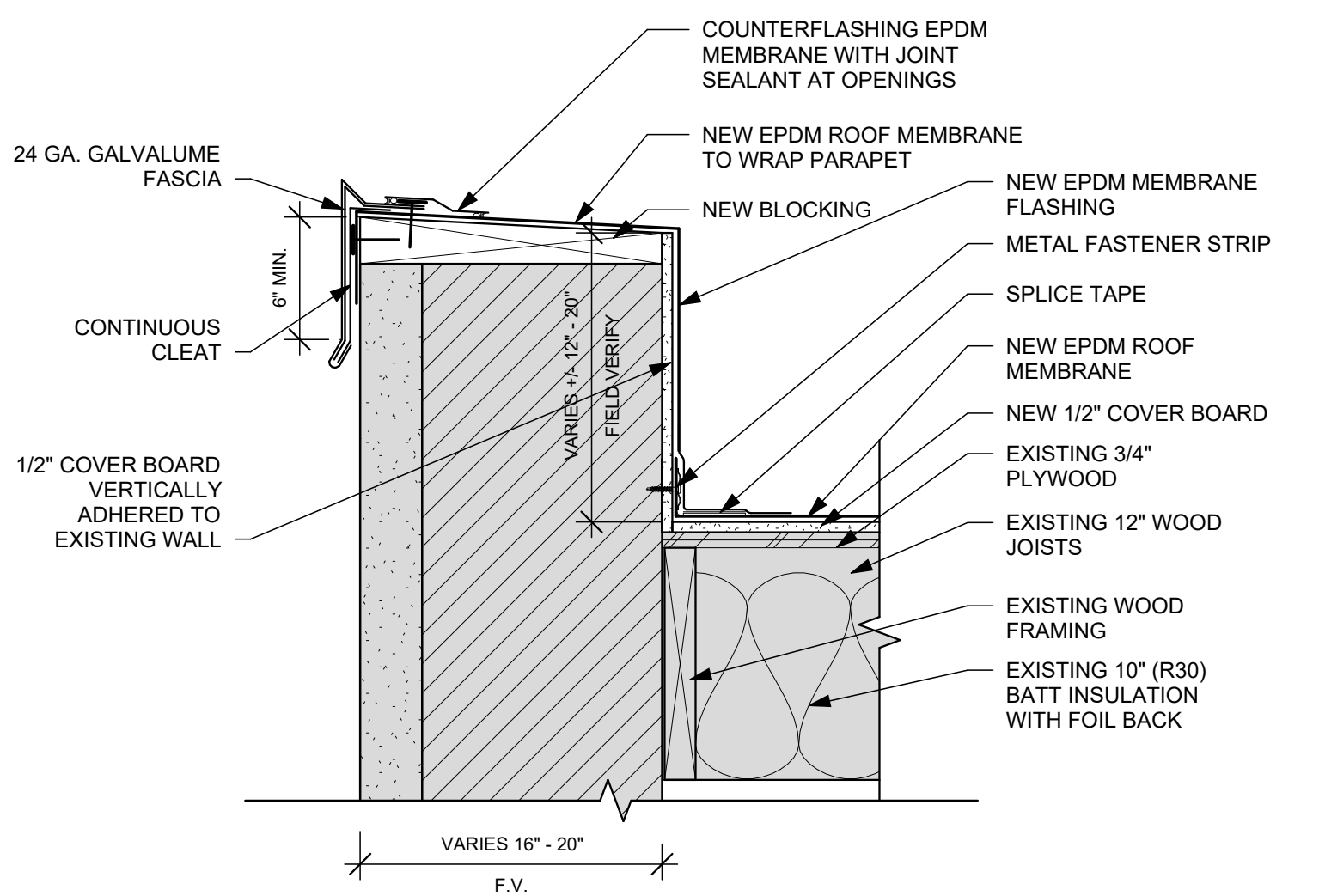
ISSUE

NO.	DATE	DESCRIPTION
1	06/01/2026	ADDENDUM 2
	05/14/2026	FOR BID AND PERMIT

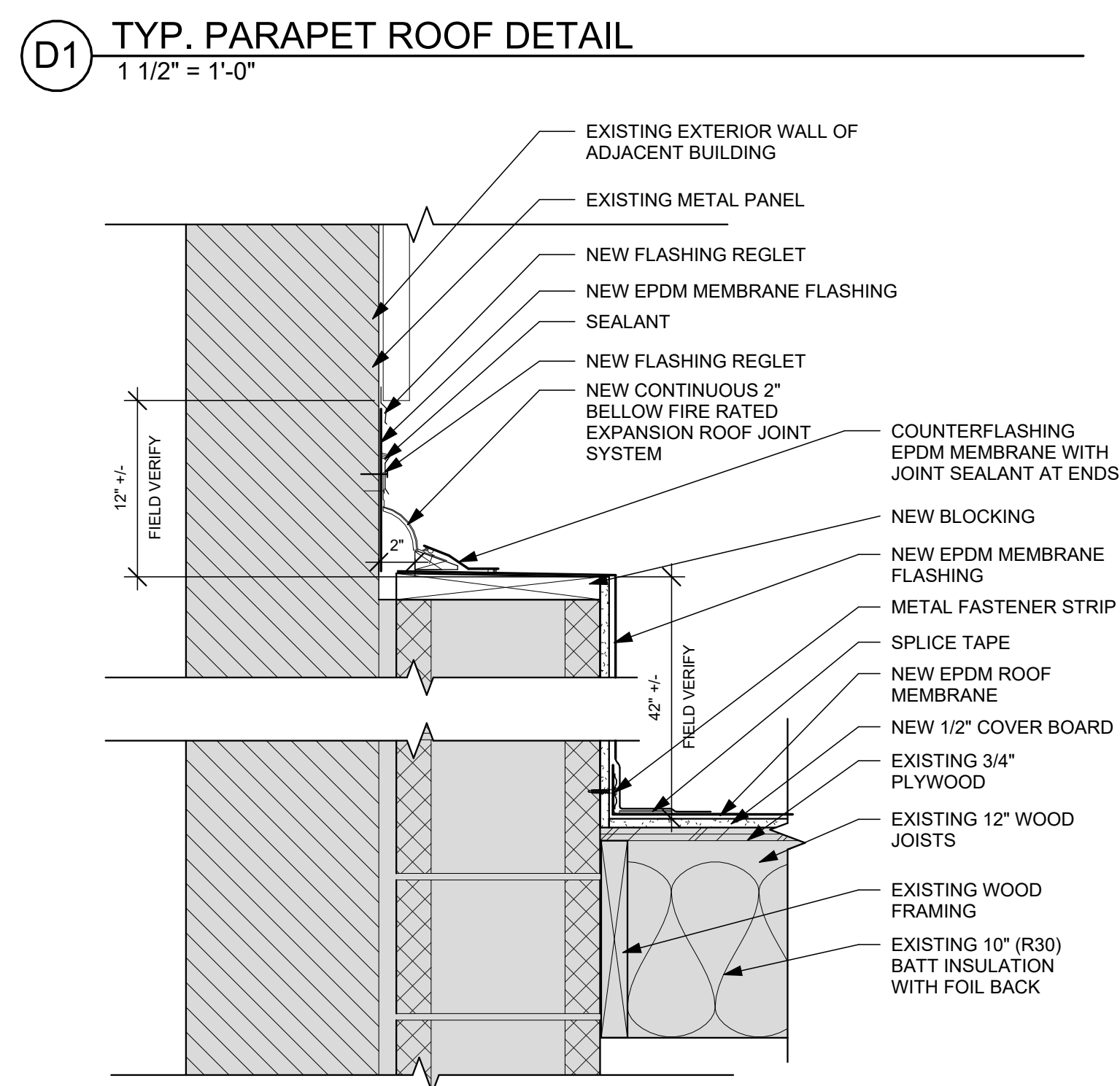
DATE 05/14/2026
JOB NO. 4275.01
DRAWN MSM/KA
CHECKED MLW
COPYRIGHT © 2026 - App Architecture, Inc.
TITLE COVER SHEET
SHEET NO. **GO.1**



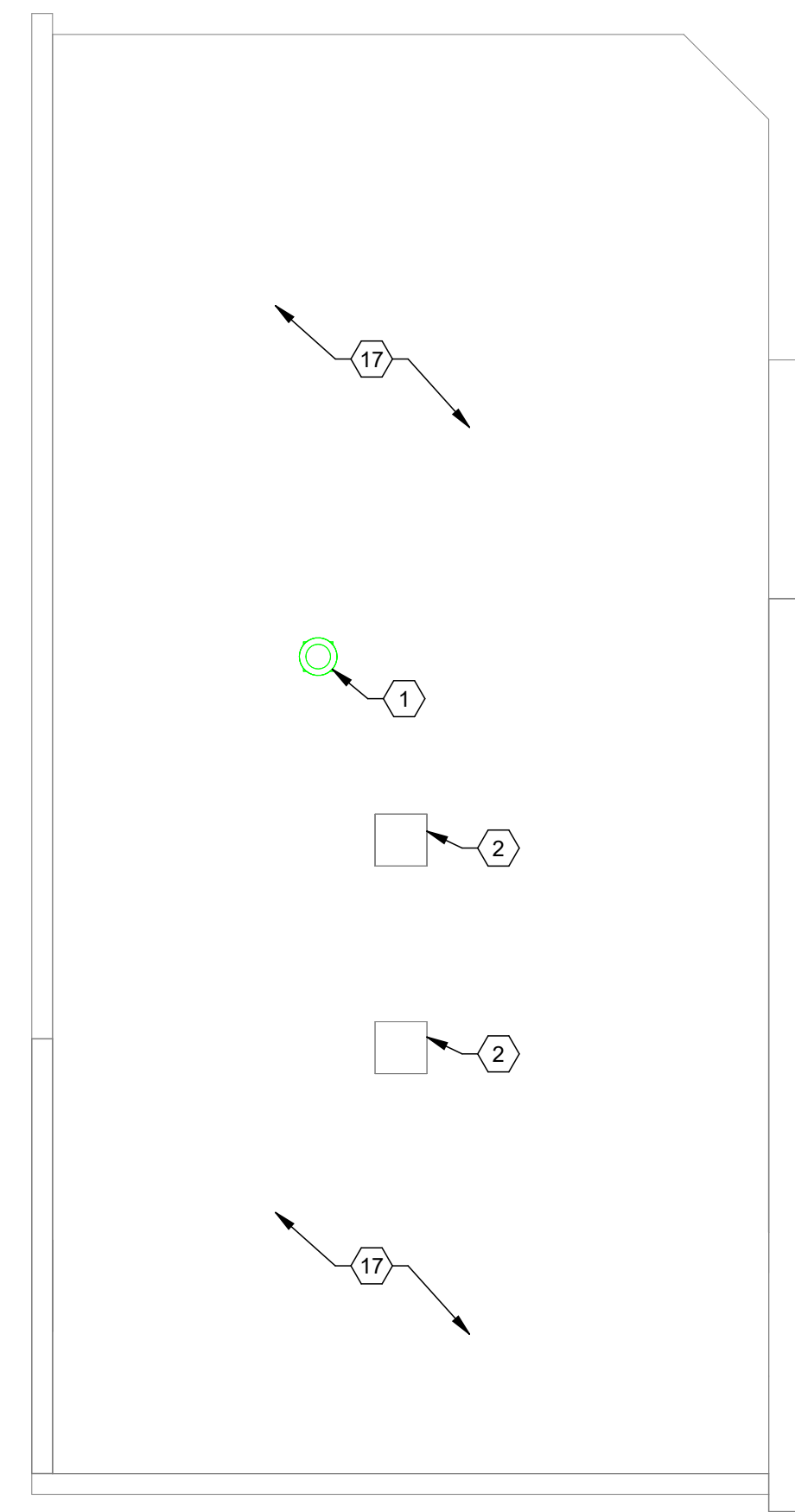
B1 TYP. PARAPET ROOF DETAIL - TAPERED INSULATION
1 1/2" = 1'-0"



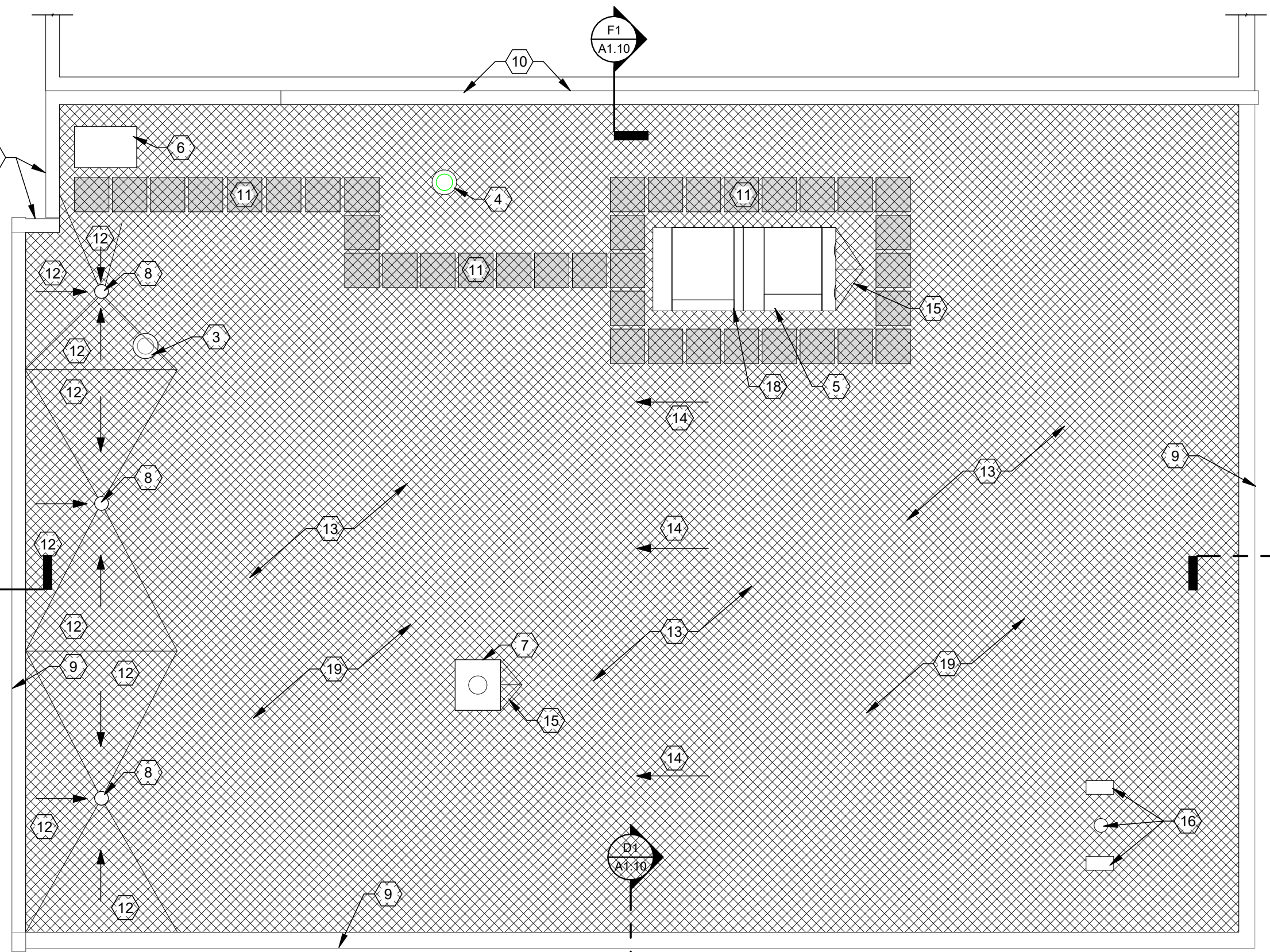
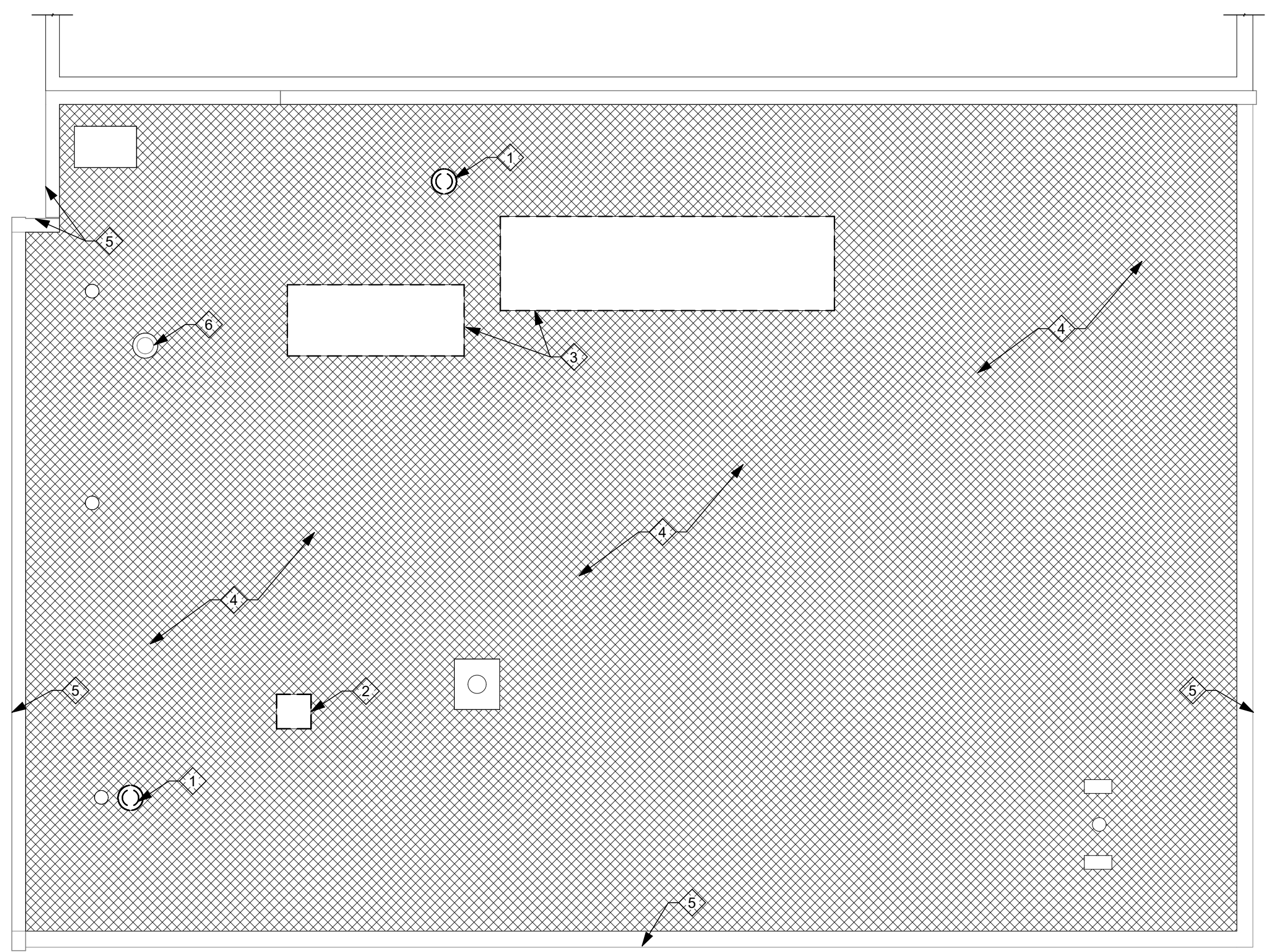
C2 ROOF PLAN DEMOLITION PLAN
1/8" = 1'-0"



F1 PARAPET ROOF DETAIL AT NORTH WALL
1 1/2" = 1'-0"



F2 ROOF PLAN REFERENCE PLAN
1/8" = 1'-0"



DEMOLITION NOTES

- INDICATES DEMOLITION NOTE.
- REMOVE EXISTING EXHAUST FAN. REFER TO MECHANICAL DRAWINGS. MECHANICAL CONTRACTOR TO PATCH AND REPAIR ROOF TO MATCH EXISTING CONDITIONS.
 - REMOVE EXISTING EXHAUST FAN. REFER TO MECHANICAL DRAWINGS. MECHANICAL CONTRACTOR TO PATCH AND REPAIR ROOF TO MATCH EXISTING CONDITIONS.
 - REMOVE EXISTING ROOF MOUNTED ROOFTOP UNIT AND CURB. MECHANICAL CONTRACTOR TO PATCH AND REPAIR ROOF TO MATCH EXISTING CONDITIONS. REFER TO STRUCTURAL DRAWINGS FOR ROOF DECK PATCHING DETAILS.
 - ALTERNATE 1: REMOVE EXISTING BUILT-UP ROOF SYSTEM AND INSULATION, IF ANY. REMOVE ANY DAMAGED SHEATHING.
 - ALTERNATE 1: REMOVE EXISTING FASCIA.
 - EXISTING EXHAUST FAN TO REMAIN.

CONSTRUCTION NOTES

- INDICATES CONSTRUCTION NOTE.
- NEW EXHAUST FAN. MECHANICAL CONTRACTOR TO PATCH AND REPAIR ROOF. REFER TO MECHANICAL DRAWINGS.
 - EXISTING CONDENSING UNIT TO REMAIN.
 - EXISTING EXHAUST FAN TO REMAIN.
 - NEW ROOF FAN. REFER TO MECHANICAL DRAWINGS.
 - NEW ROOFTOP UNIT. REFER TO MECHANICAL DRAWINGS.
 - EXISTING ROOF HATCH TO REMAIN.
 - EXISTING CHIMNEY FLUE TO REMAIN.
 - EXISTING ROOF DRAIN TO REMAIN.
 - ALTERNATE 1: PROVIDE AND INSTALL NEW FASCIA ON PERIMETER OF ROOF, 3 SIDES. BASIS OF DESIGN: DMI DYNACLAD EDGE GRAVEL STOP. 24 GA GALVALUME. ARCHITECT TO SELECT FROM MANUFACTURER'S STANDARD RANGE OF COLORS.
 - ALTERNATE 1: PROVIDE AND INSTALL NEW FIRE RATED EXPANSION JOINT AT ADJACENT BUILDING. BASIS OF DESIGN: MM SYSTEMS ELASTOMERIC ROOF JOINT SYSTEM. MODEL ERJL. COLOR: BLACK. INSTALL PER MANUFACTURER'S INSTALLATIONS.
 - ALTERNATE 1: PROVIDE AND INSTALL NEW ROOF WALKWAY PROTECTION PADS.
 - ALTERNATE 1: PROVIDE AND INSTALL NEW TAPERED INSULATION. MINIMUM SLOPE: 1/4":12 AT ROOF DRAIN AREAS.
 - ALTERNATE 1: NEW EPDM ROOFING MEMBRANE. REPLACE ANY DAMAGED SHEATHING. GENERAL CONTRACTOR TO INCLUDE AN ALLOWANCE IN THEIR BID TO REPLACE 15% OF THE AREA OF EXISTING 3/4" PLYWOOD SHEATHING.
 - EXISTING ROOF FRAMING SLOPES TOWARDS ROOF DRAIN.
 - ALTERNATE 1: ROOF CRICKET FORMED WITH TAPERED INSULATION TO SLOPE TO DRAIN. TYPICAL AT ALL ROOF CURBS.
 - EXISTING FLAG POLE AND LIGHTS TO REMAIN.
 - EXISTING ROOFING MEMBRANE TO REMAIN.
 - NEW CURB ON EXISTING STRUCTURAL FRAMING.
 - ALTERNATE 1: NEW 1/2" COVER BOARD TO BE ADHERED TO ROOF SHEATHING AND ALL PARAPET WALLS.

GENERAL NOTES

- COORDINATE ROOF PENETRATIONS WITH PLUMBING, MECHANICAL, AND ELECTRICAL DRAWINGS.
- COORDINATE SEQUENCE OF WORK WITH PHASING PLANS.
- ROOFING REPLACEMENT WORK TO BE COMPLETED WHEN MECHANICAL WORK ON THE ROOF HAS BEEN COMPLETED IF ALTERNATE 1 IS ACCEPTED. PROVIDE TEMPORARY ROOF PATCHES UNTIL THE ENTIRE ROOF IS REPLACED UPON ACCEPTANCE OF ALTERNATE 1.
- ALTERNATE 1: GENERAL CONTRACTOR TO PROVIDE 2-3 ROOF CORE UPON ACCEPTANCE OF ALTERNATE 1. CORE RESULTS TO BE DISTRIBUTED TO OWNER AND ARCHITECT NO LATER THAN 1 MONTH BEFORE ROOF REPLACEMENT WORK BEGINS.
- REFER TO STRUCTURAL DRAWINGS FOR ROOF DECK PATCHING DETAILS WHERE EXISTING MECHANICAL EQUIPMENT WAS REMOVED.

= AREA OF ALTERNATE 1

App Architecture
creative focused design

615 Woodside Drive, Englewood, Ohio 45322
T 937.836.8898 F 937.832.3696
www.app-arch.com

STATE OF OHIO
ARCHITECT
MARIANNE L. WEBER
9675
REGISTERED
Marianne L. Weber, License #9675
Expiration Date 12/31/2027

Renovation Greenville National Bank Main Branch

446 SOUTH BROADWAY STREET, GREENVILLE, OH 45331
AND 114 WEST 4TH STREET, GREENVILLE, OH 45331

ISSUE

NO.	DATE	DESCRIPTION
	05/14/2026	FOR BID AND PERMIT
1	06/01/2026	ADDENDUM 2

DATE	05/14/2026
JOB NO.	4275_01
DRAWN	MSM/KA
CHECKED	MLW
COPYRIGHT © 2026 - App Architecture, Inc.	

TITLE
ROOF PLANS

SHEET NO.
A1.10